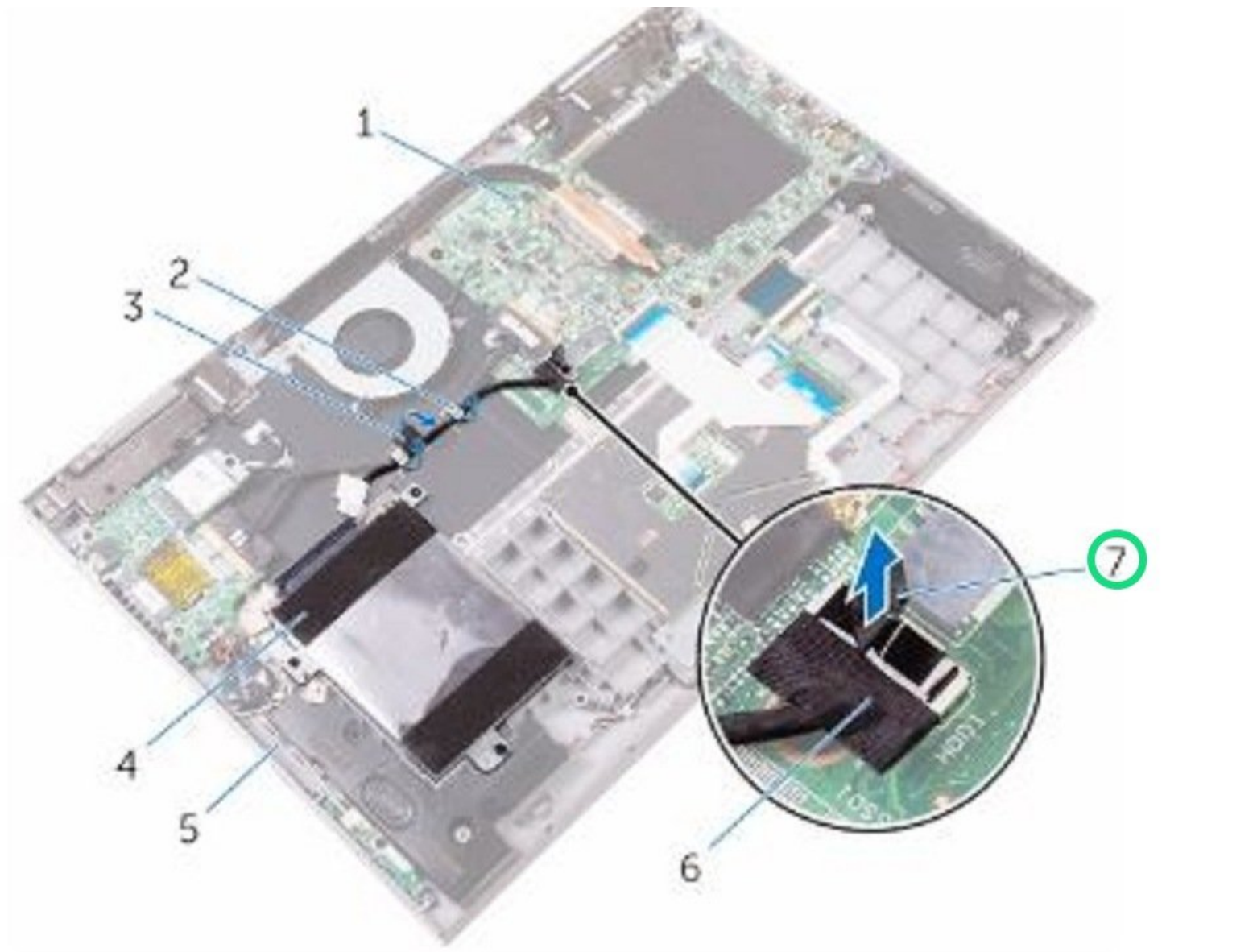




# Dell Inspiron 15 5578 2-in-1 Hard Drive Replacement

Written By: Terrence15



---

## INTRODUCTION

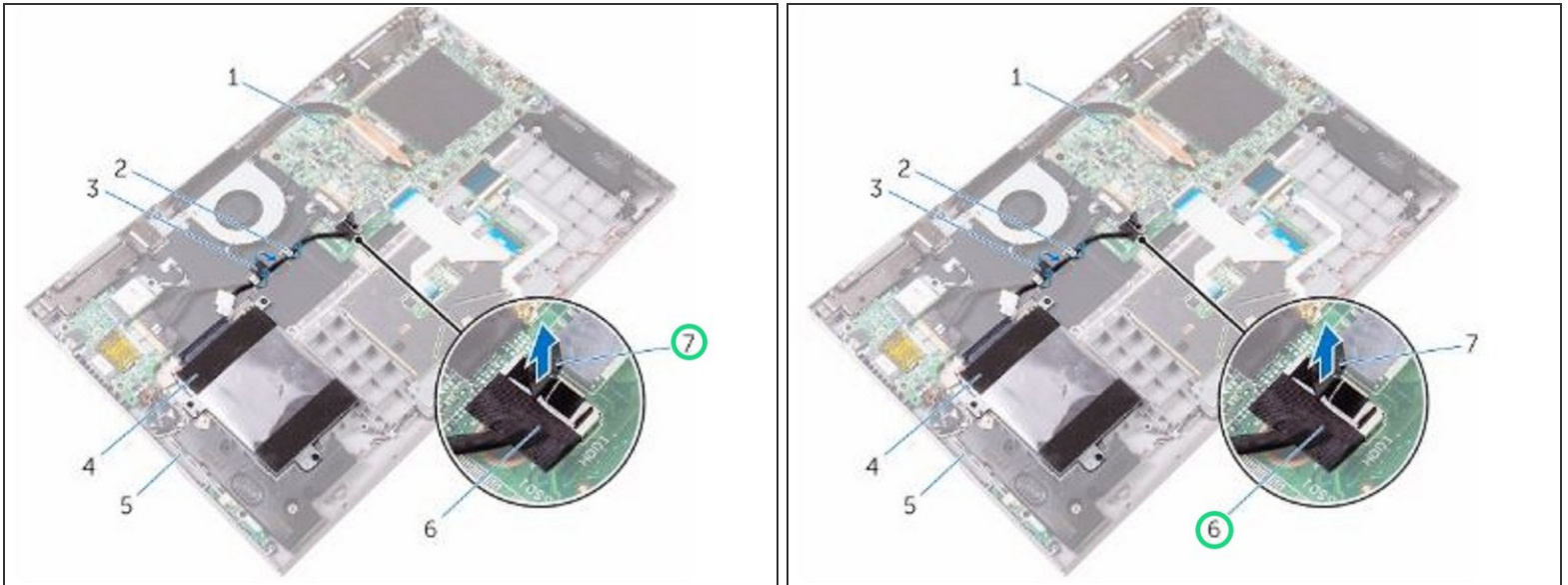
In this guide, we will be showing you how to remove and replace the Hard Drive.



### TOOLS:

- [Phillips #0 Screwdriver](#) (1)
-

## Step 1 — Disconnect the Hard Drive Cable

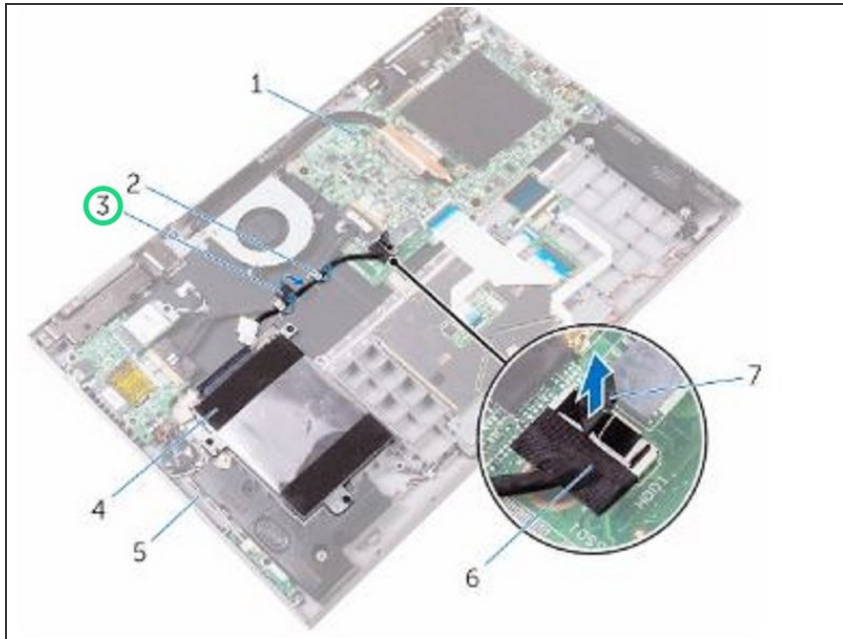


**⚠ WARNING:** Before working inside your computer, read the safety information that shipped with your computer and follow the steps in [Before Working Inside Your Computer](#). After working inside your computer, follow the instructions in [After Working Inside Your Computer](#).

**⚠ CAUTION:** Hard drives are fragile. Exercise care when handling the hard drive.

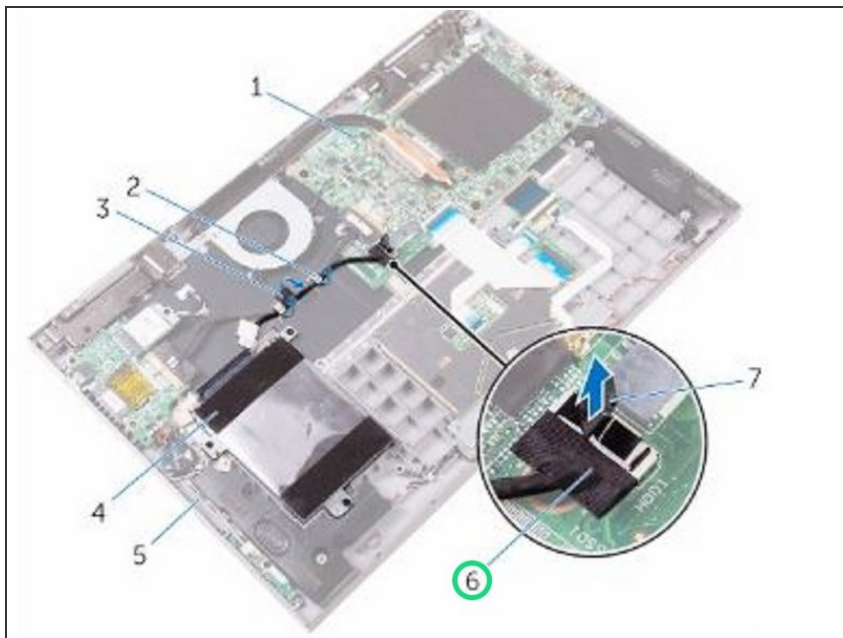
- Using the pull tab, disconnect the hard-drive cable from the system board.

## Step 2 — Peel off the Tape



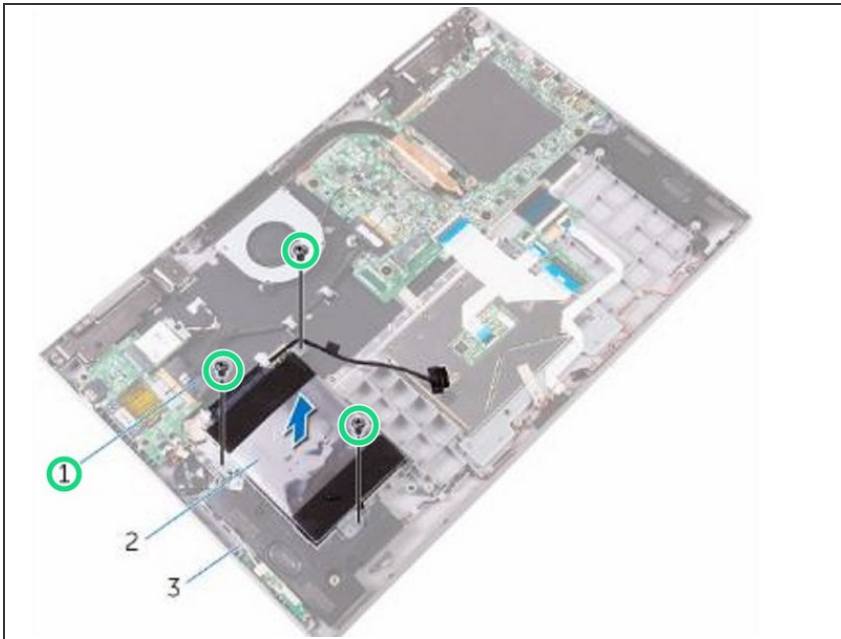
- Peel off the tape that secures the hard-drive cable to the palm rest and keyboard assembly.

## Step 3 — Noting the Hard Drive Cable



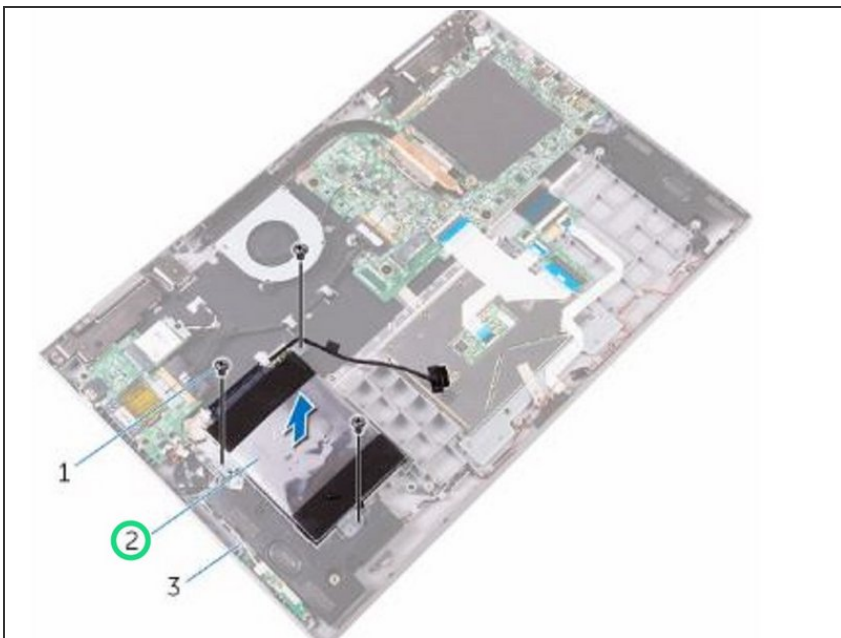
- Note the hard-drive cable routing and remove the cable from the routing guides.

## Step 4 — Remove the Screws



- Remove the screws that secure the hard-drive assembly to the palm rest and keyboard assembly.

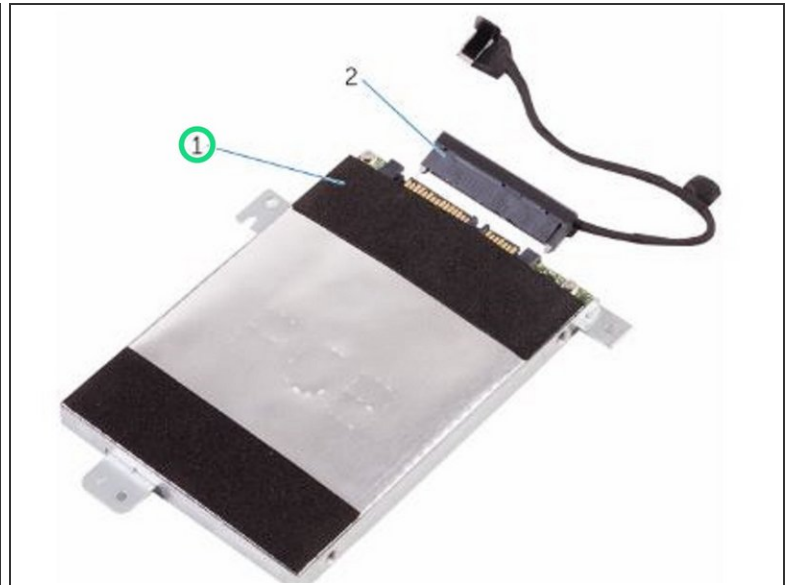
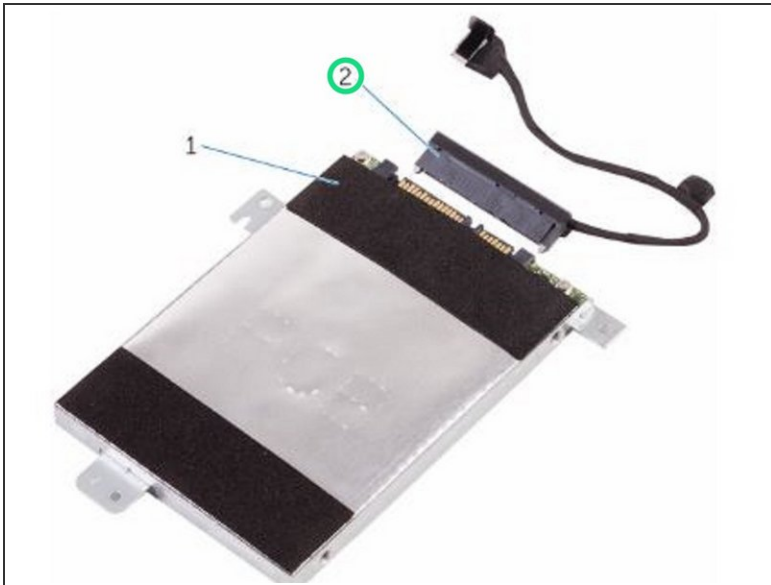
## Step 5 — Lifting the Hard-Drive Assembly



- Lift the hard-drive assembly along with its cable off the palm rest and keyboard assembly.

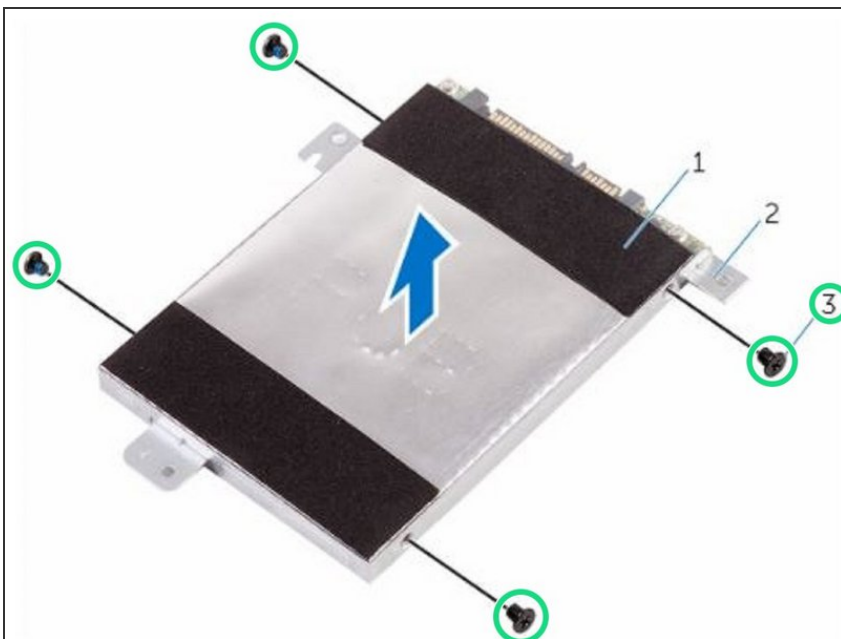


## Step 6 — Disconnect the Interposer



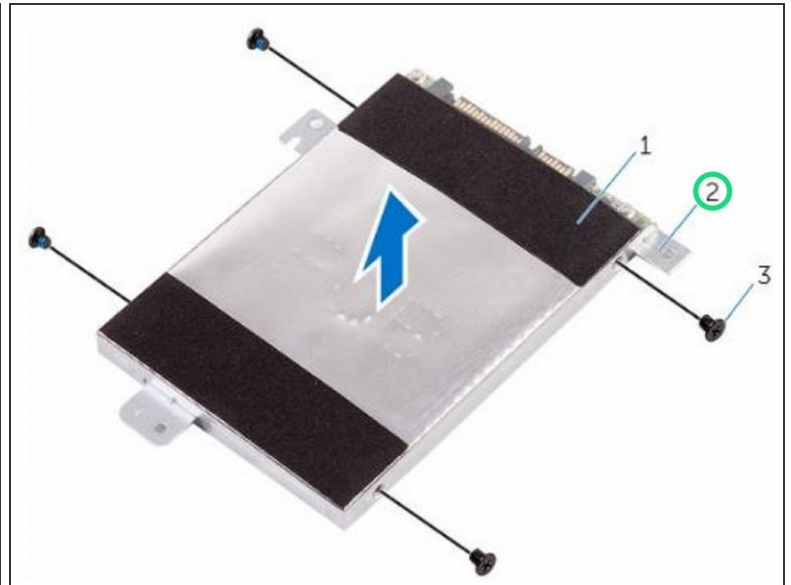
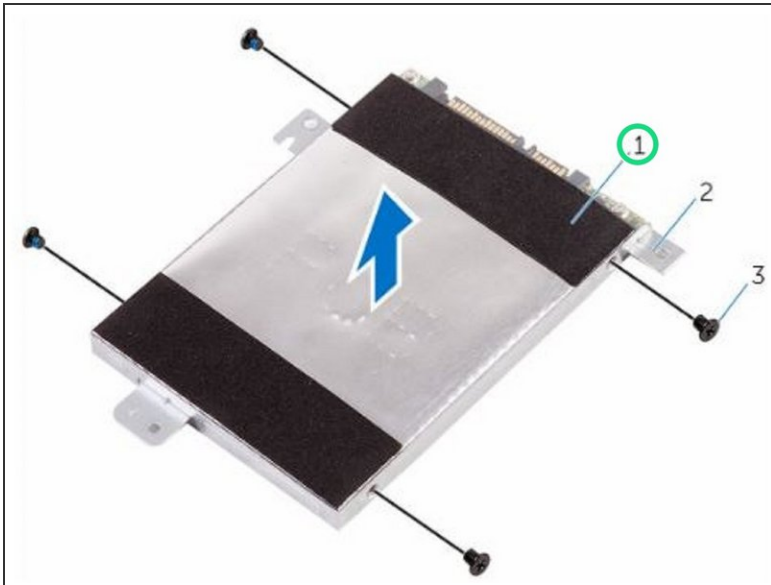
- Disconnect the interposer from the hard-drive assembly.

## Step 7 — Remove the Screws



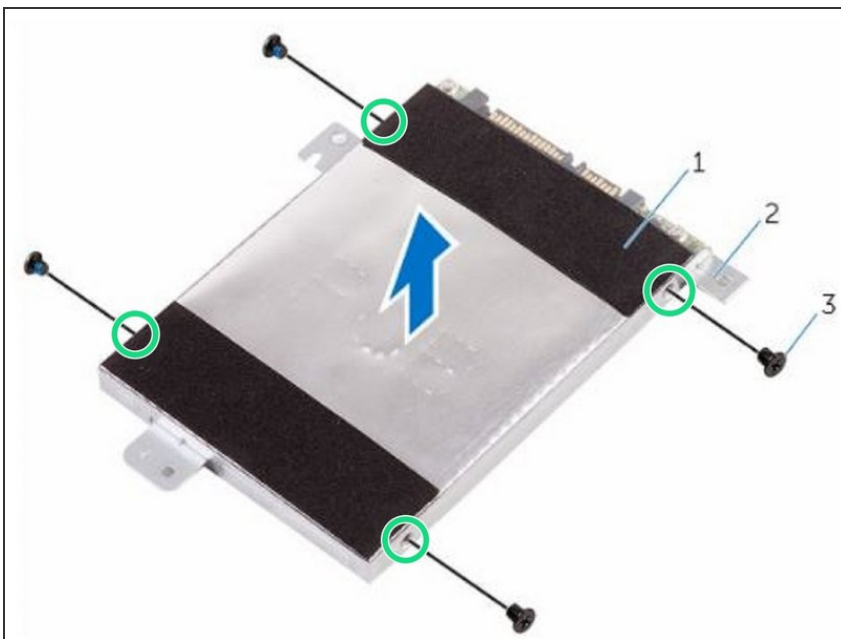
- Remove the screws that secure the hard-drive bracket to the hard drive.

## Step 8 — Lifting the Hard Drive



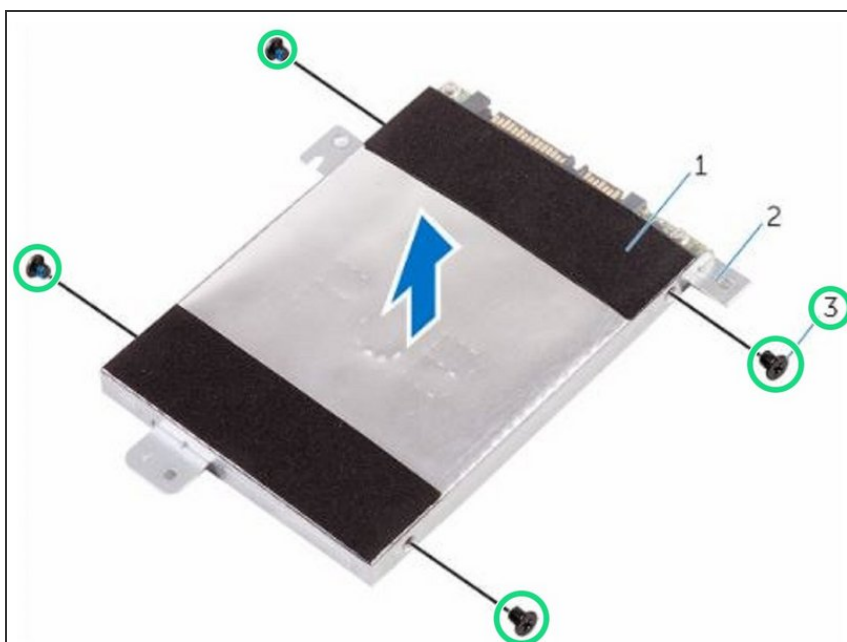
- Lift the hard drive off the hard-drive bracket.

## Step 9 — Align the Screw Holes



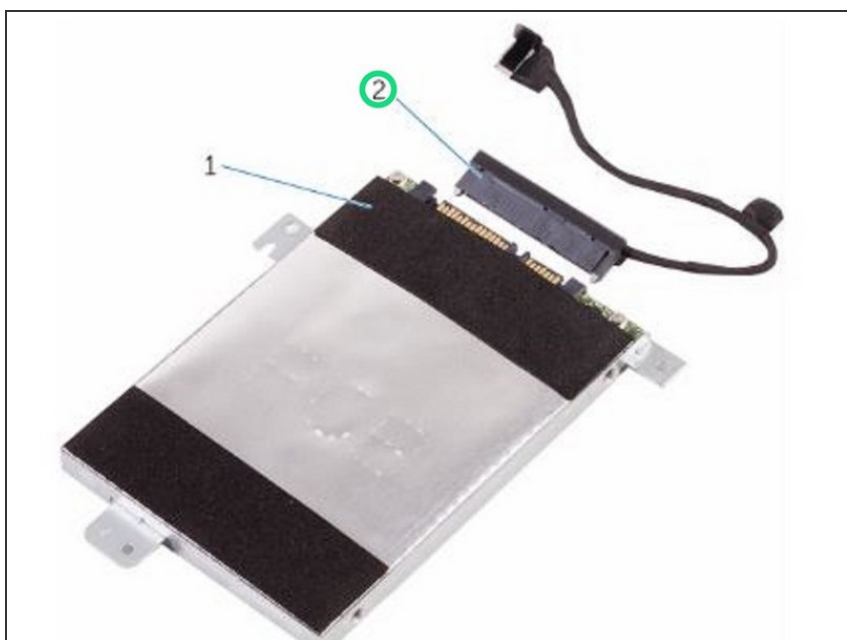
- Align the screw holes on the hard-drive bracket with the screw holes on the **NEW** hard drive.

## Step 10 — Replace the Screws



- Replace the screws that secure the hard-drive bracket to the hard drive.

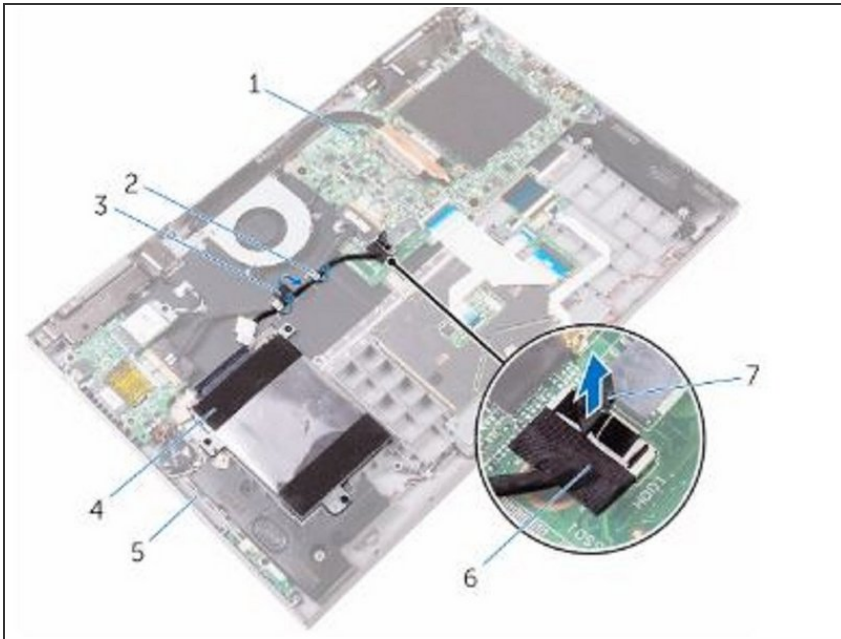
## Step 11 — Connecting the Interposer



- Connect the interposer to the hard-drive assembly.

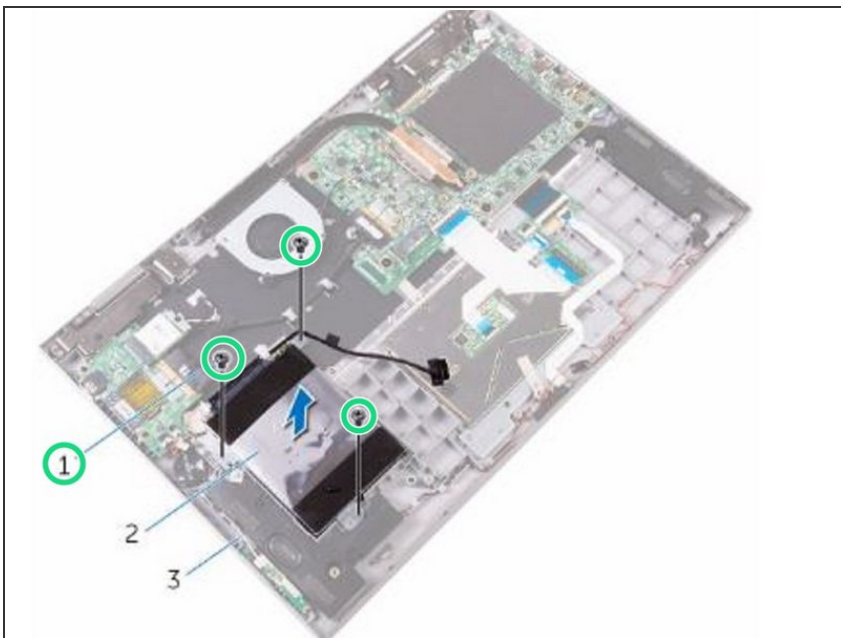


## Step 12 — Align the Screw Holes



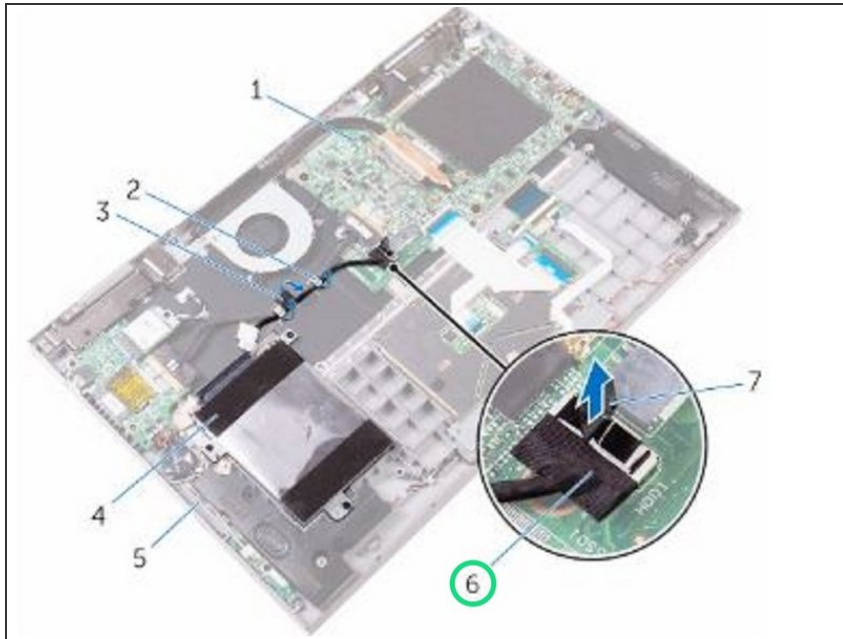
- Align the screw holes on the hard-drive assembly with the screw holes on the palm rest and keyboard assembly.

## Step 13 — Replace the Screws



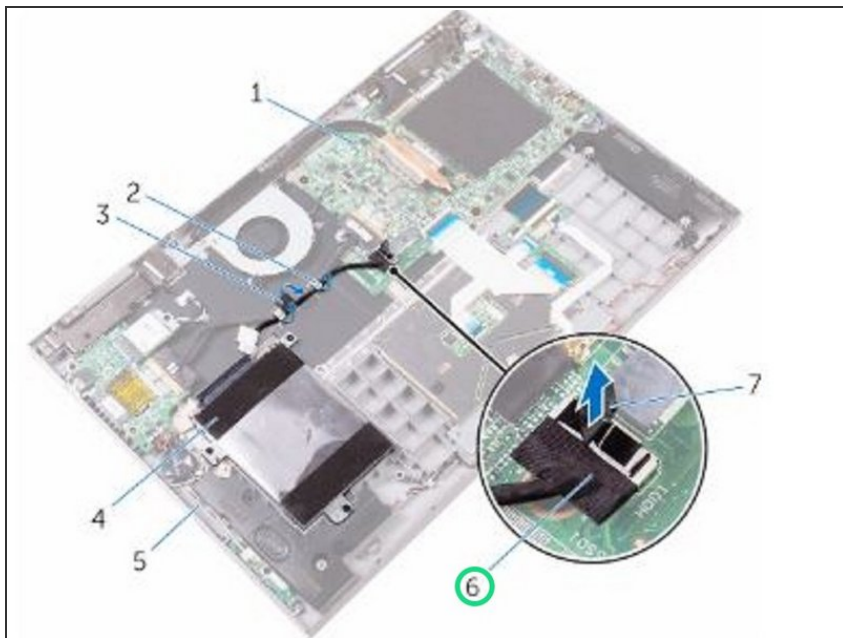
- Replace the screws that secure the hard-drive assembly to the palm rest and keyboard assembly.

## Step 14 — Routing the Hard Drive Cable



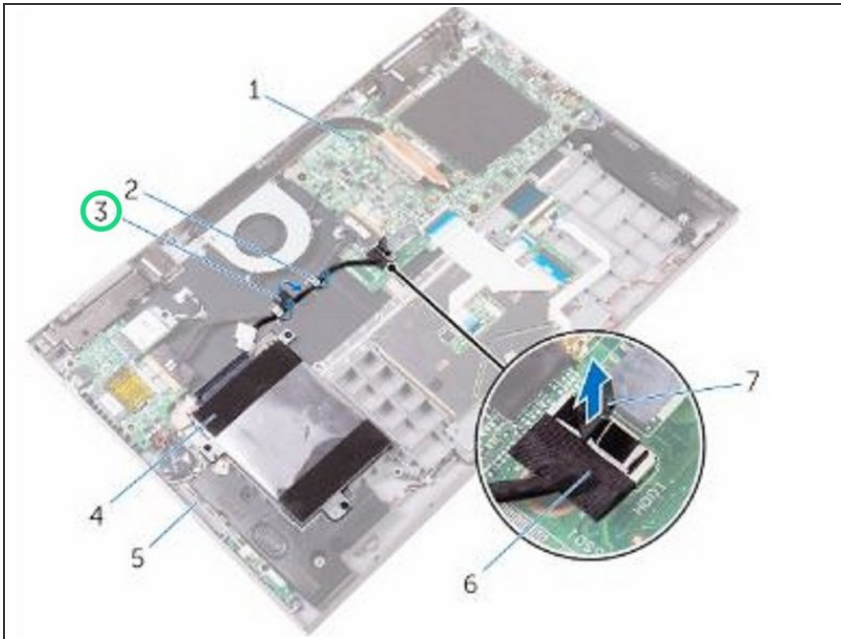
- Route the hard-drive cable through the routing guides on the palm rest and keyboard assembly.

## Step 15 — Connect the Hard Drive Cable



- Connect the hard-drive cable to the system board.

## Step 16 — Adhering the Tape



- Adhere the tape that secures the hard-drive cable to the palm rest and keyboard assembly.