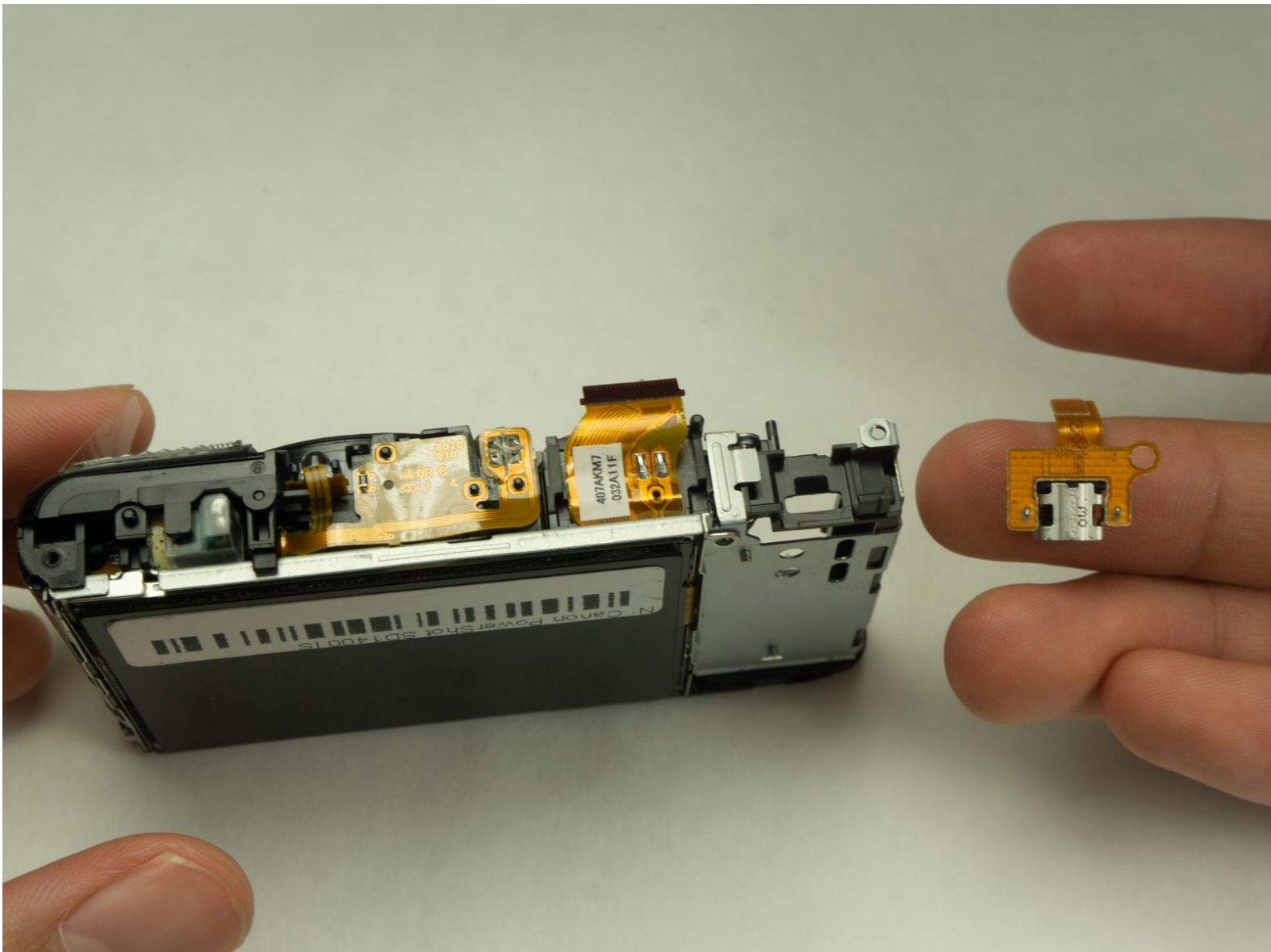




Canon PowerShot SD1400 IS USB Port Replacement

Replace your damaged or unfunctional USB port of a Canon PowerShot SD1400 IS by following the steps listed in this guide.

Written By: Faris Rezwan



INTRODUCTION

USB Port can be damaged from force exertion on the pins which can prevent it to connect to an external device. This guide will show the steps to replace the USB port in the device.



TOOLS:

- [iFixit Opening Tools](#) (1)
- [Tweezers](#) (1)
- [Phillips #00 Screwdriver](#) (1)
- [Phillips #000 Screwdriver](#) (1)



PARTS:

- [Canon PowerShot SD1400 IS USB port](#) (1)

Step 1 — USB Port



- Remove the four 2mm Phillips #00 screws on both sides of the camera.

Step 2



- Remove the single 4mm Phillips #00 screw from the bottom.

Step 3



- Remove the front face panel off of the camera.

Step 4



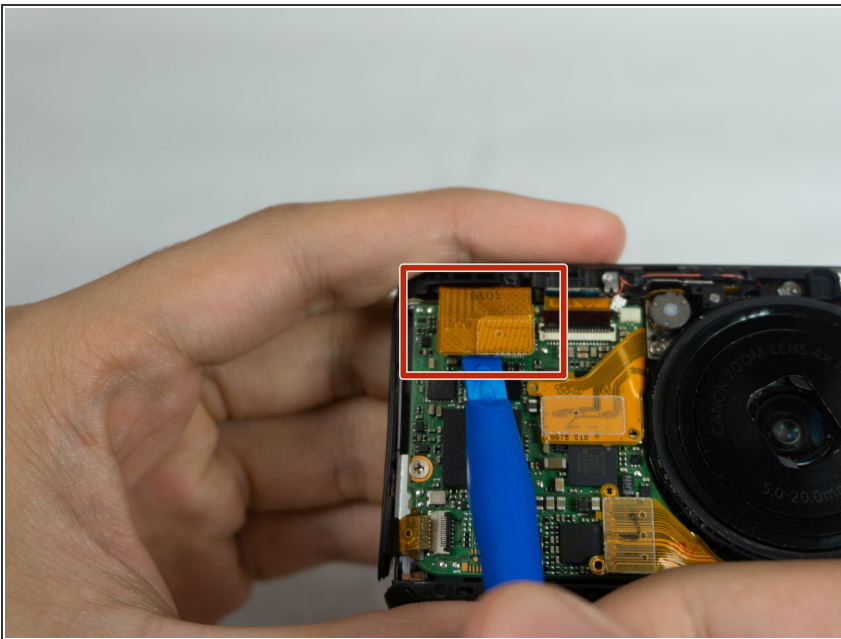
- Remove the rear panel of the camera.
- ⓘ The user interface panel, side and bottom panel of the camera may fall down by itself while you are taking the rear panel of the camera.

Step 5



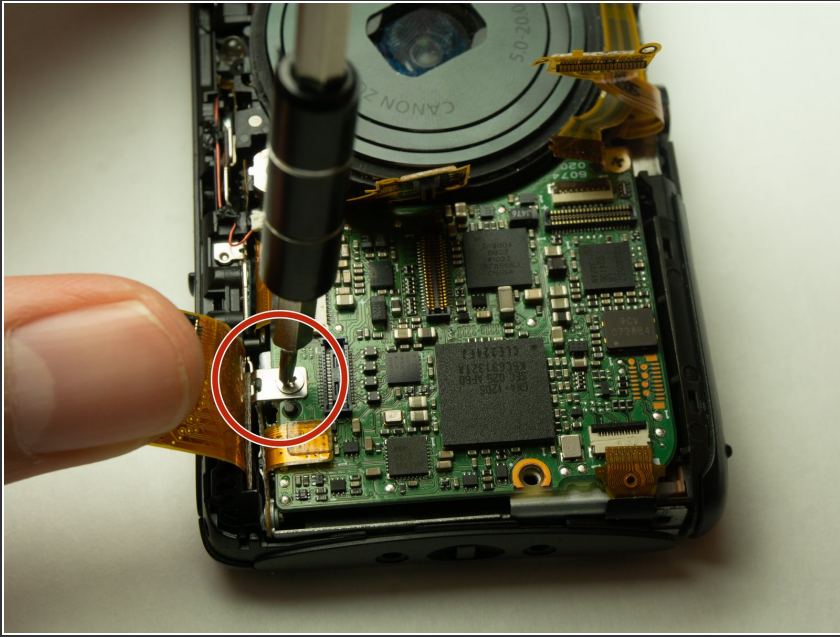
- Remove the 3mm Phillips #000 screw from the top of the camera.

Step 6



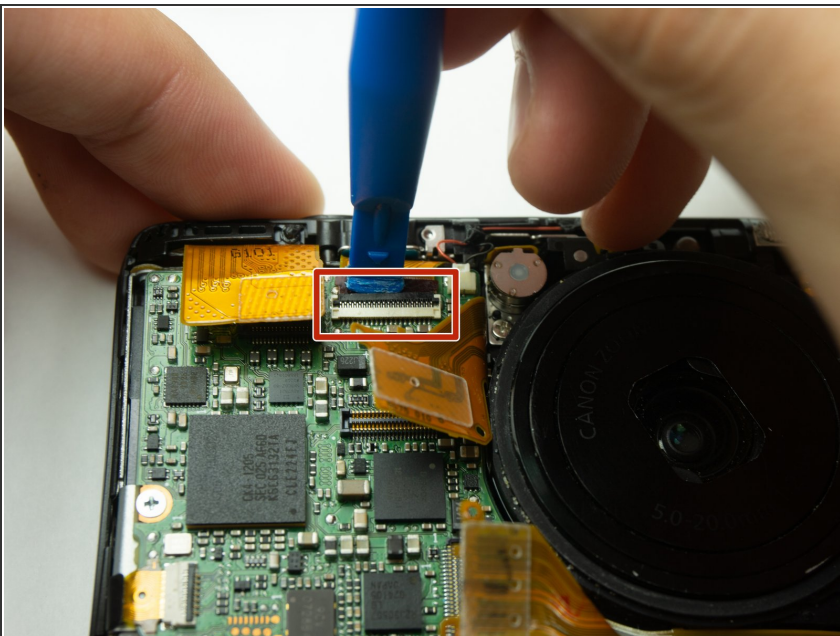
- Pry the golden ribbon cable from the motherboard with a plastic opening tool.
- ⓘ A screw will be visible underneath the golden ribbon after prying it.

Step 7



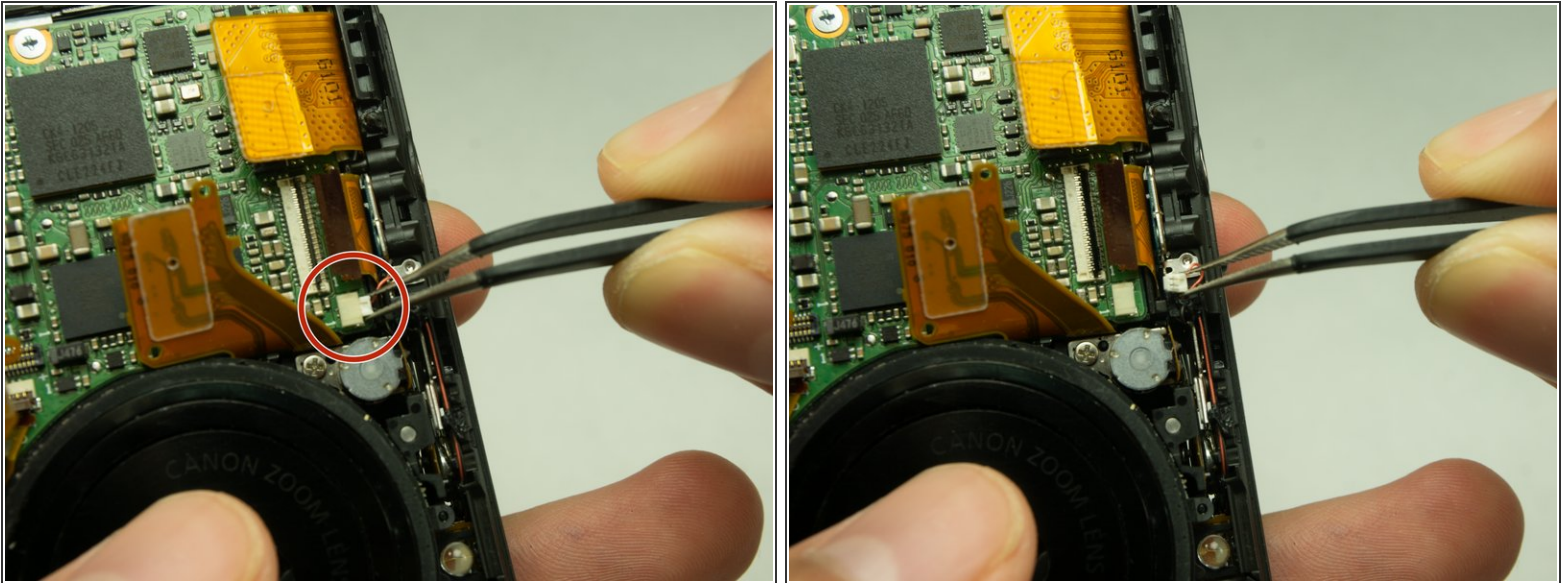
- Remove the 3mm Phillips #000 screw from the motherboard.

Step 8



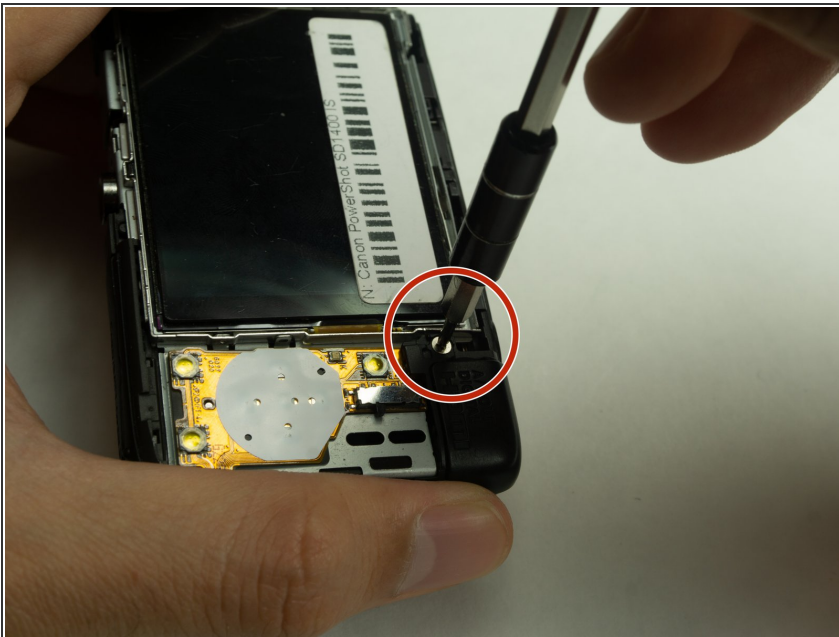
- Use a plastic opening tool to flip up the retaining flap on the ribbon cable [ZIF](#) socket.

Step 9



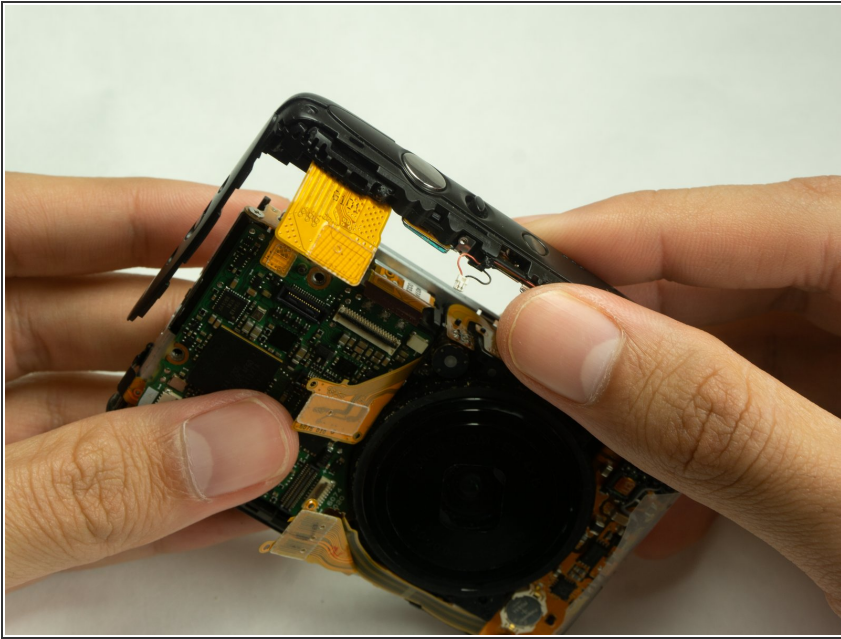
- Unplug the small chip from the face of the camera using a pair of tweezers.

Step 10



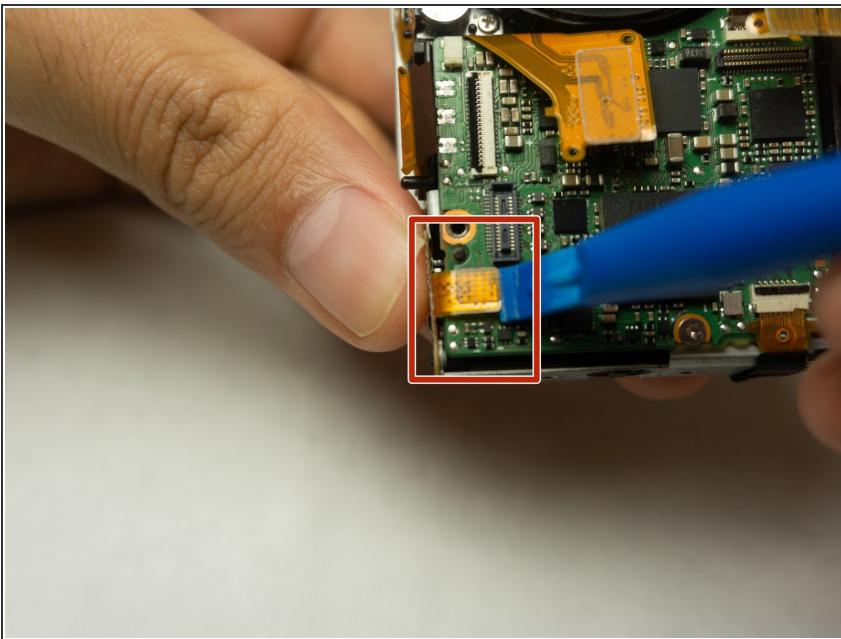
- Remove the 3mm Phillips #000 screw from the rear face of the camera.

Step 11



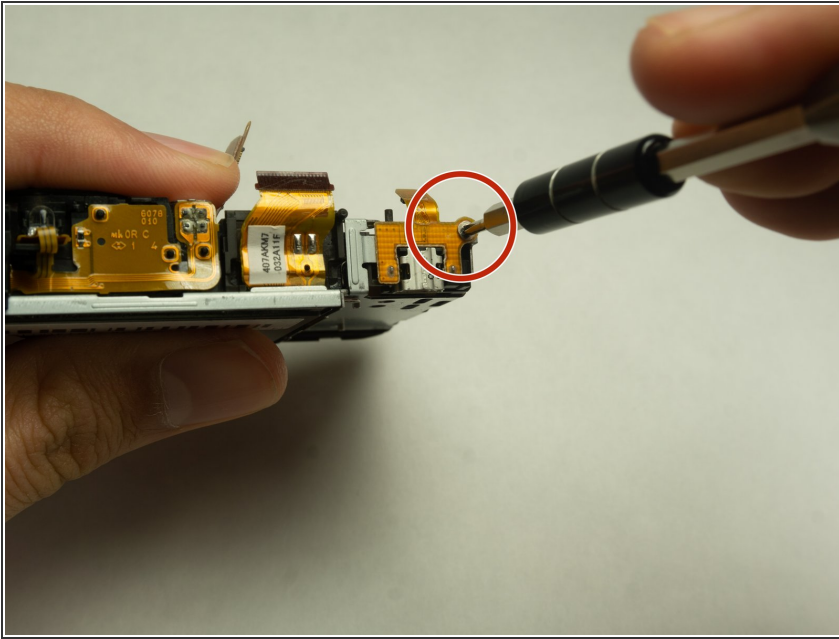
- Remove the top panel from the camera.

Step 12



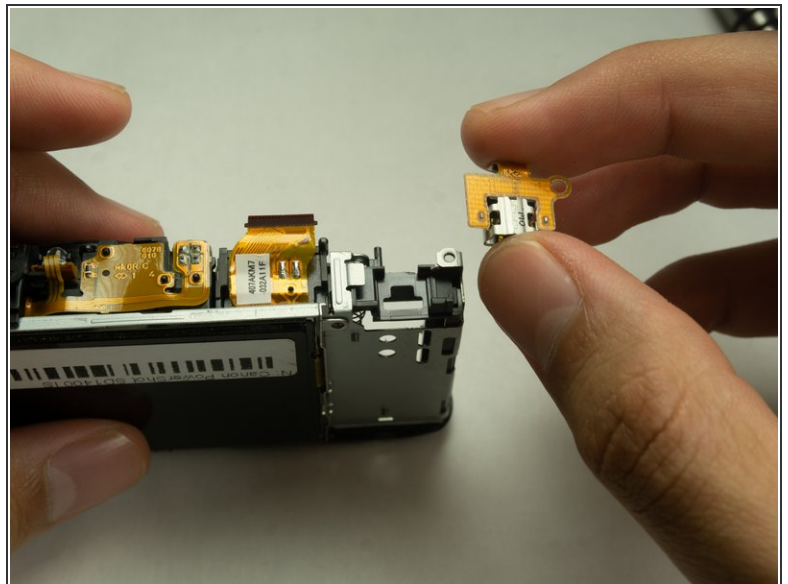
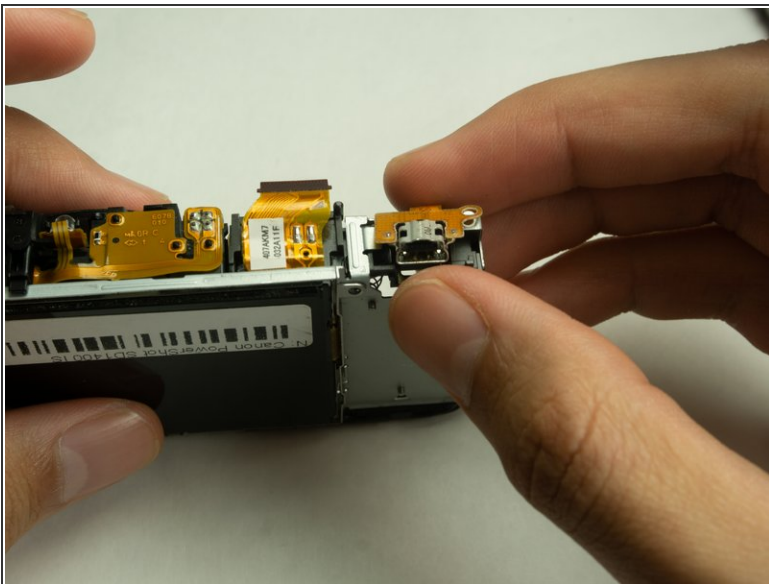
- Pry the golden ribbon cable attached to the USB port using a plastic opening tool.

Step 13



- Remove the 3mm Phillips #000 screw located at the top right of the USB port.

Step 14



- Remove the USB port.

To reassemble your device, follow these instructions in reverse order.