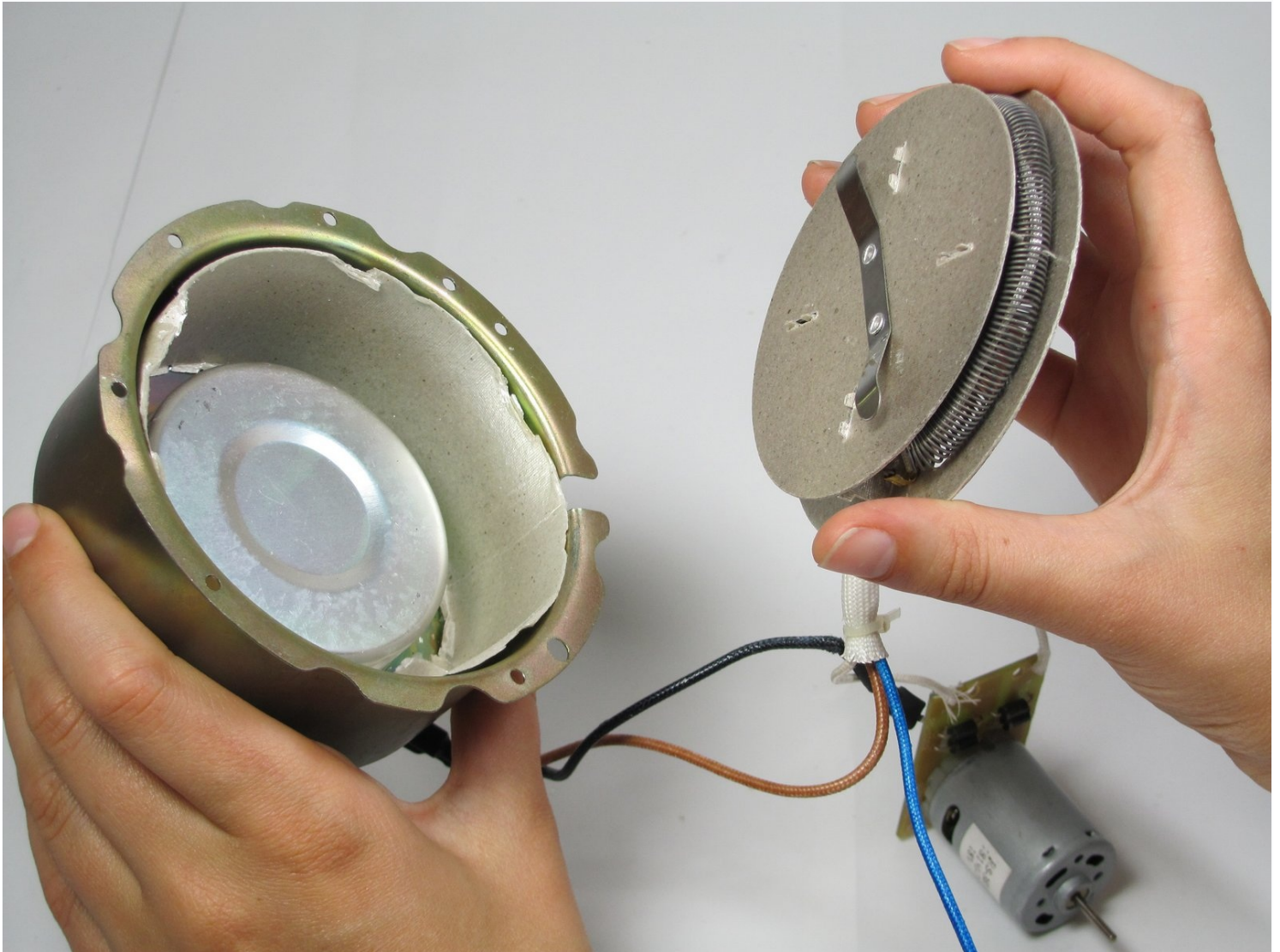




# Nostalgia Electrics RHP-310 Disassembly for cleaning

This guide will describe the maintenance of the...

Written By: Dana Clarke



# INTRODUCTION

This guide will describe the maintenance of the device.

---

## TOOLS:

[Phillips #2 Screwdriver](#) (1)

[iFixit Opening Tool](#) (1)

---

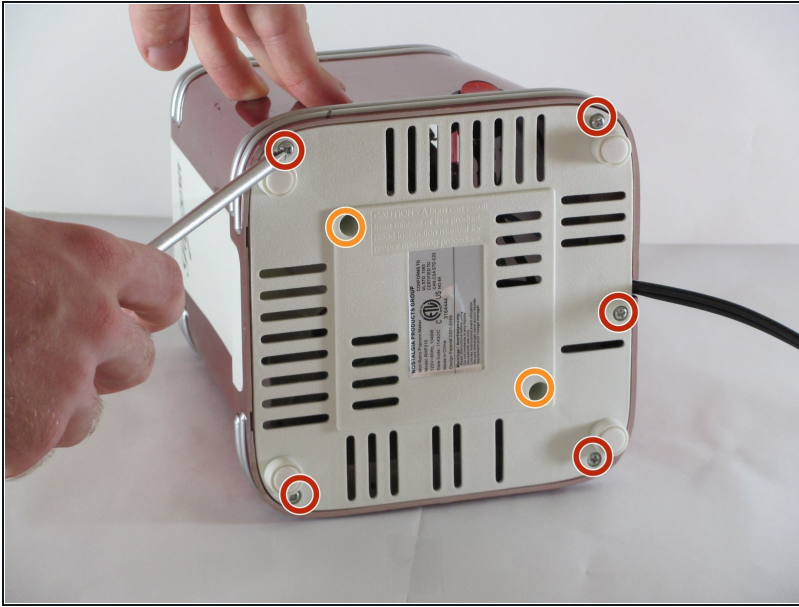
## Step 1 — Power Switch



 **Unplug the popper.**

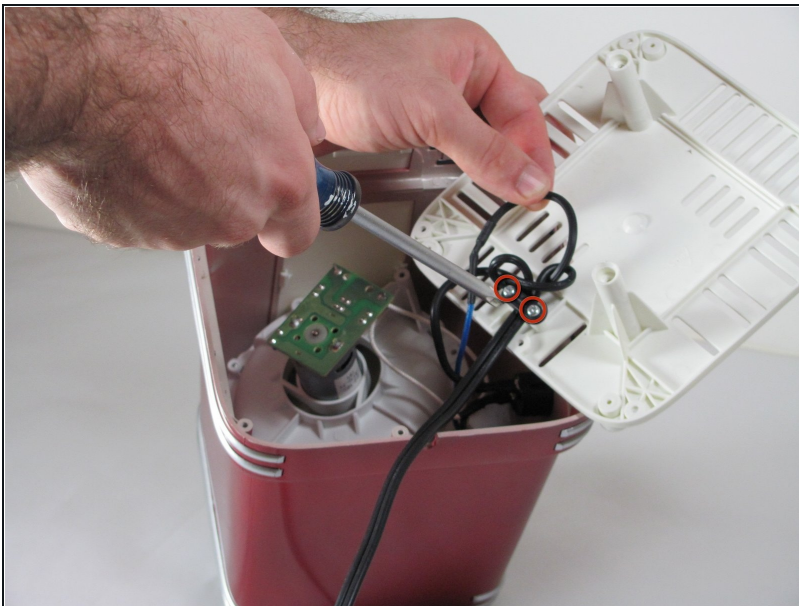
- Lift the lid up to remove it.

## Step 2



- Lay the popper on its side.
- Remove the five 12mm Philips #2 screws around the perimeter of the base with the Phillips #2 screwdriver.
- Remove the two 15mm Philips #2 screws in the center of the base with the Phillips #2 screwdriver.
- ① Put the removed screws in a safe place, they will be needed later to reattach the housing to the base.

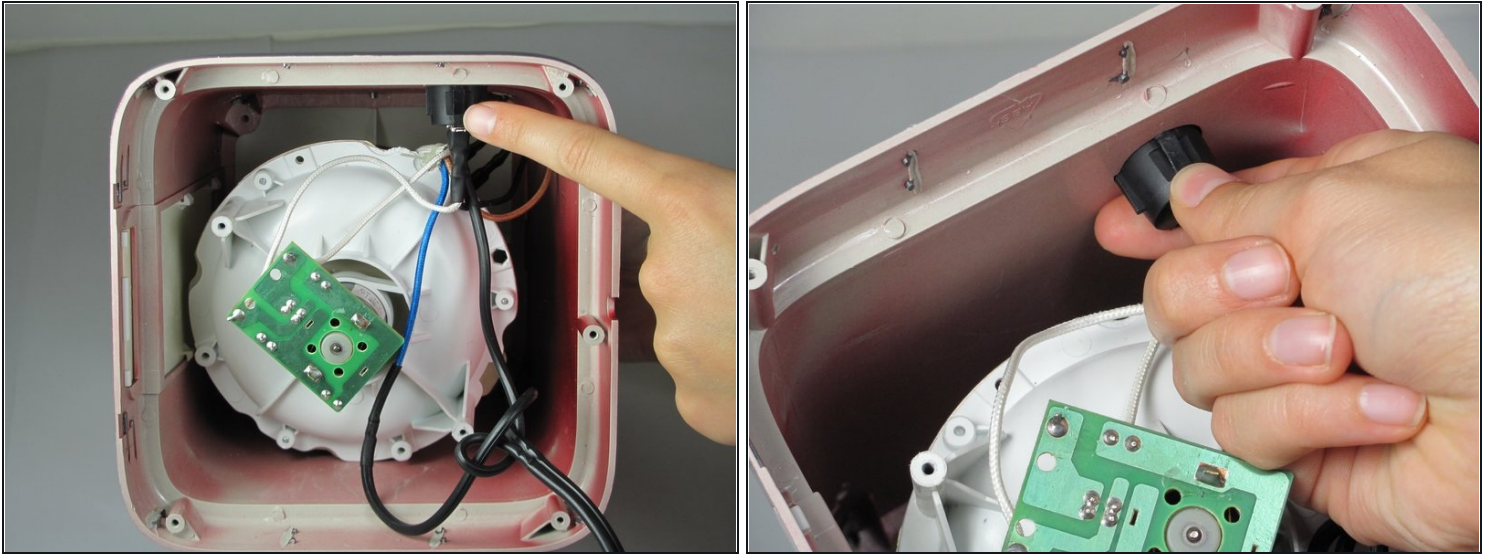
## Step 3



- Flip the base over to view the interior of the base panel.
- Unscrew the two 10 mm Philips #2 screws from the base panel.
- Remove the base and set it aside.



## Step 4



- Locate the power switch connected to the side of the housing.
- Pinch the sides of the power switch.
- Push the power button up and out of the housing.

## Step 5



- Remove the wires connected to the power switch that should be detached from the housing.
- Gently pry the wires loose from the power switch with the plastic opening tool.
- ① The wires should easily pop out from the power switch.

## Step 6



- Remove the power switch from the housing unit.
- You can now replace the power switch, if necessary.

## Step 7 — Replacing Housing



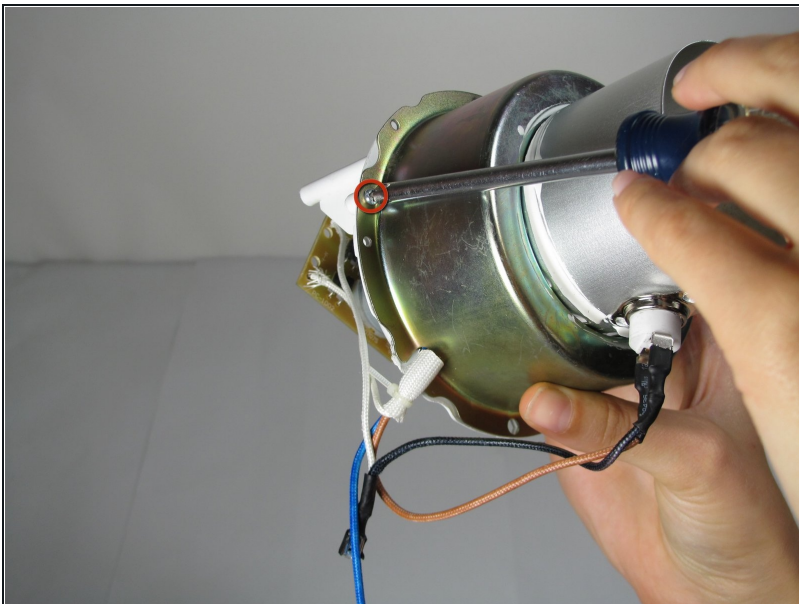
- Gently remove the heating component from the popper.
- Unscrew the four screws (11mm Philips #2 screws) that connect the white top to the housing.
- ① Save the screws from this step. You will need them to connect the new housing to the white top.

## Step 8



- Remove the white top from the housing.

## Step 9 — Replacing Fan



- Unscrew the three 10 mm Philips #2 screws that hold the heating component together.
- ⓘ Keep the screws in a safe place. You will need them to put the heating component back together.

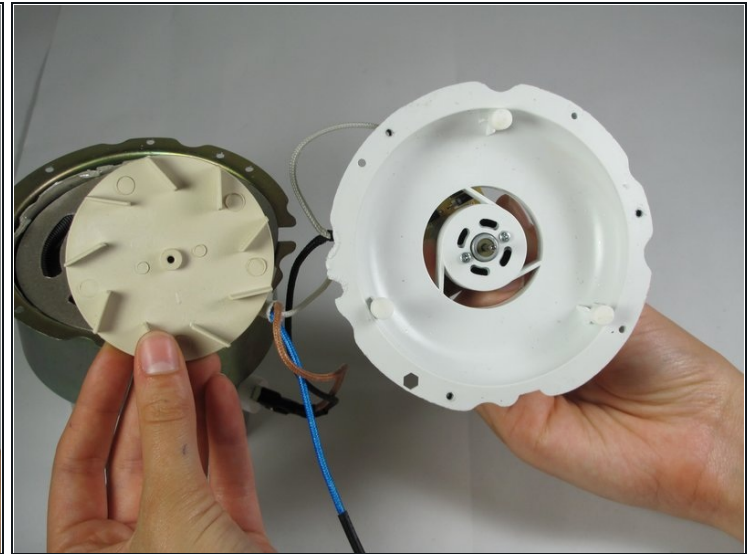
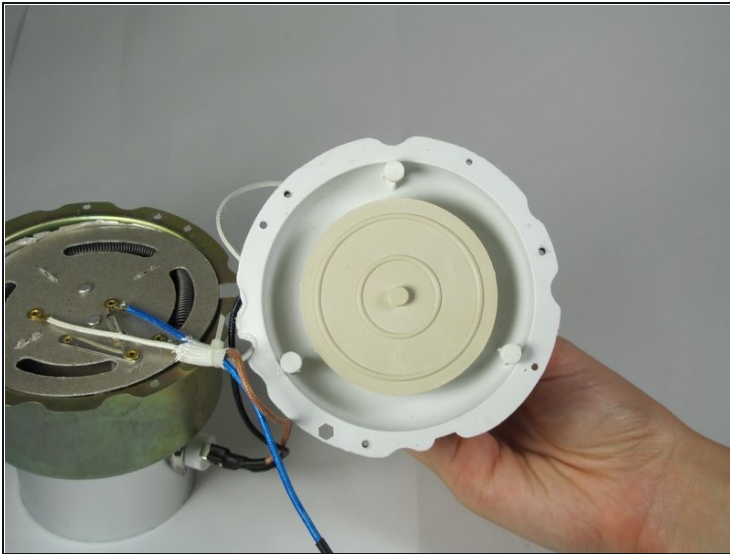


## Step 10



- Pull the heating component apart.

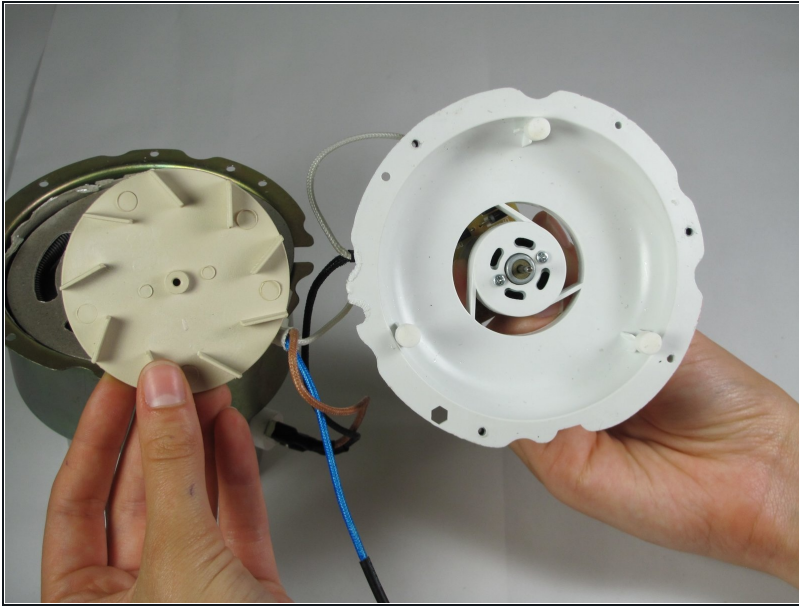
## Step 11



- Locate the fan.
- Pull the fan off the motor.

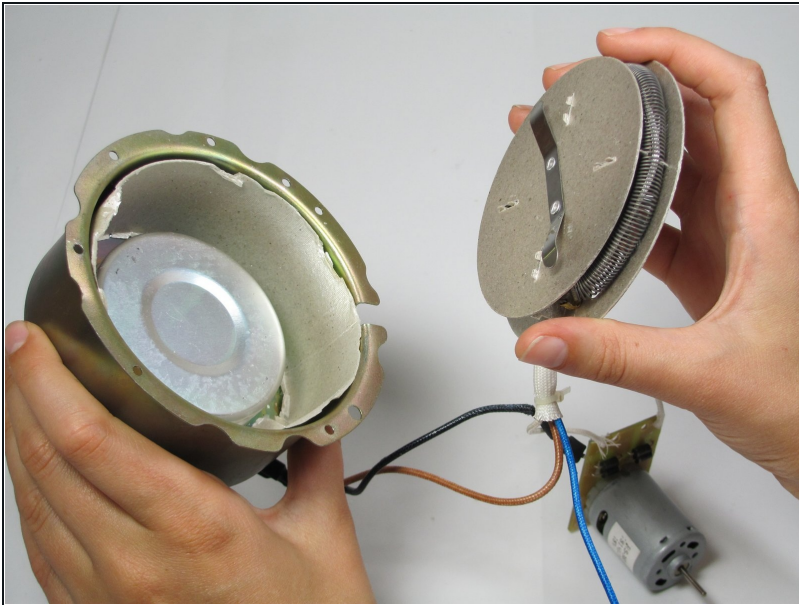
⚠ Do not pull too hard or you will break the motor.

## Step 12



- You can now replace the fan. If there is debris, clean it out.

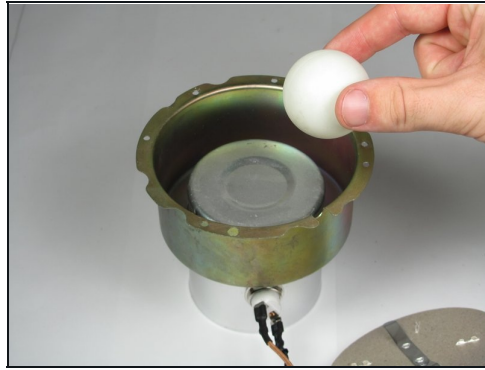
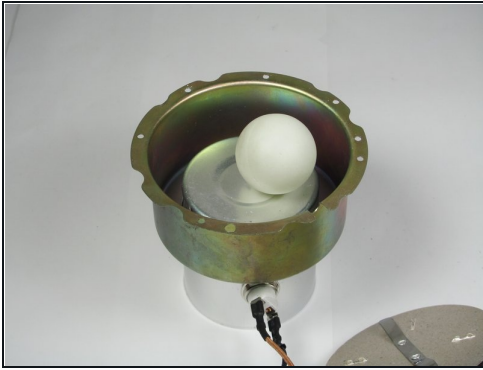
## Step 13 — Nostalgia Electrics RHP-310 Disassembly for cleaning



- Remove the heating coil out of the heating component.



## Step 14



- Visually check for debris.
  - Remove debris.
- 

To reassemble your device, follow these instructions in reverse order.