



Kenmore 110 Series Washing Machine

Electronic Control Replacement

Use this guide to replace a faulty electronic...

Written By: Robert Trout



INTRODUCTION

Use this guide to replace a faulty electronic control on your Kenmore 110 Washing Machine.



TOOLS:

- [Adjustable Wrench](#) (1)
 - [Phillips #1 Screwdriver](#) (1)
 - [Socket Wrench](#) (1)
 - [5/16" Socket](#) (1)
-

Step 1 — Electronic Control



⚠️ Unplug the washing machine!

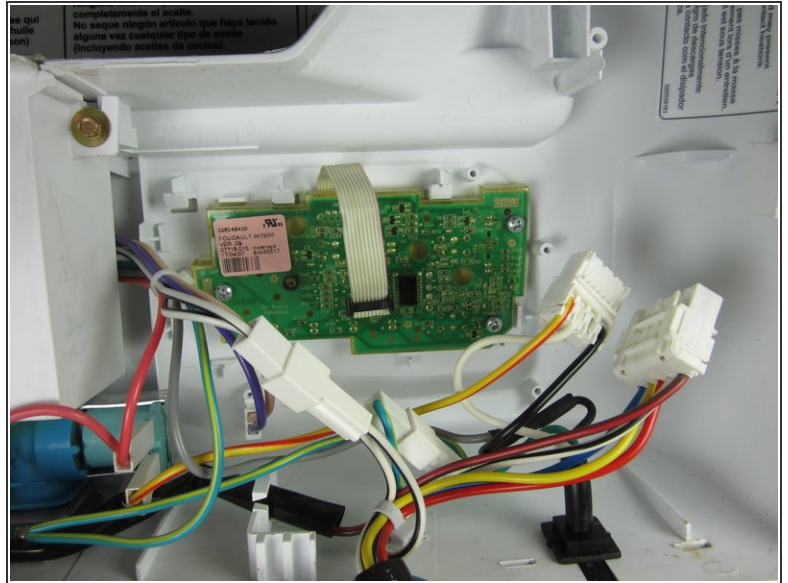
- Using a 5/16" socket wrench or an adjustable wrench, remove the three screws from the top rear of the washer.
- Lifting from the rear, remove the top panel.
- ⓘ The top panel will still be connected by wires and hoses. It will help if you have a flat raised surface to set the top panel on.

Step 2



- Using a 5/16" socket wrench or a hand wrench, remove the two screws from the component cover.
- From the bottom, pull out and remove the component cover.

Step 3



- Carefully remove the three wire harnesses.
- With a phillips head screwdriver, remove the three mounting screws.

To reassemble your device, follow these instructions in reverse order.