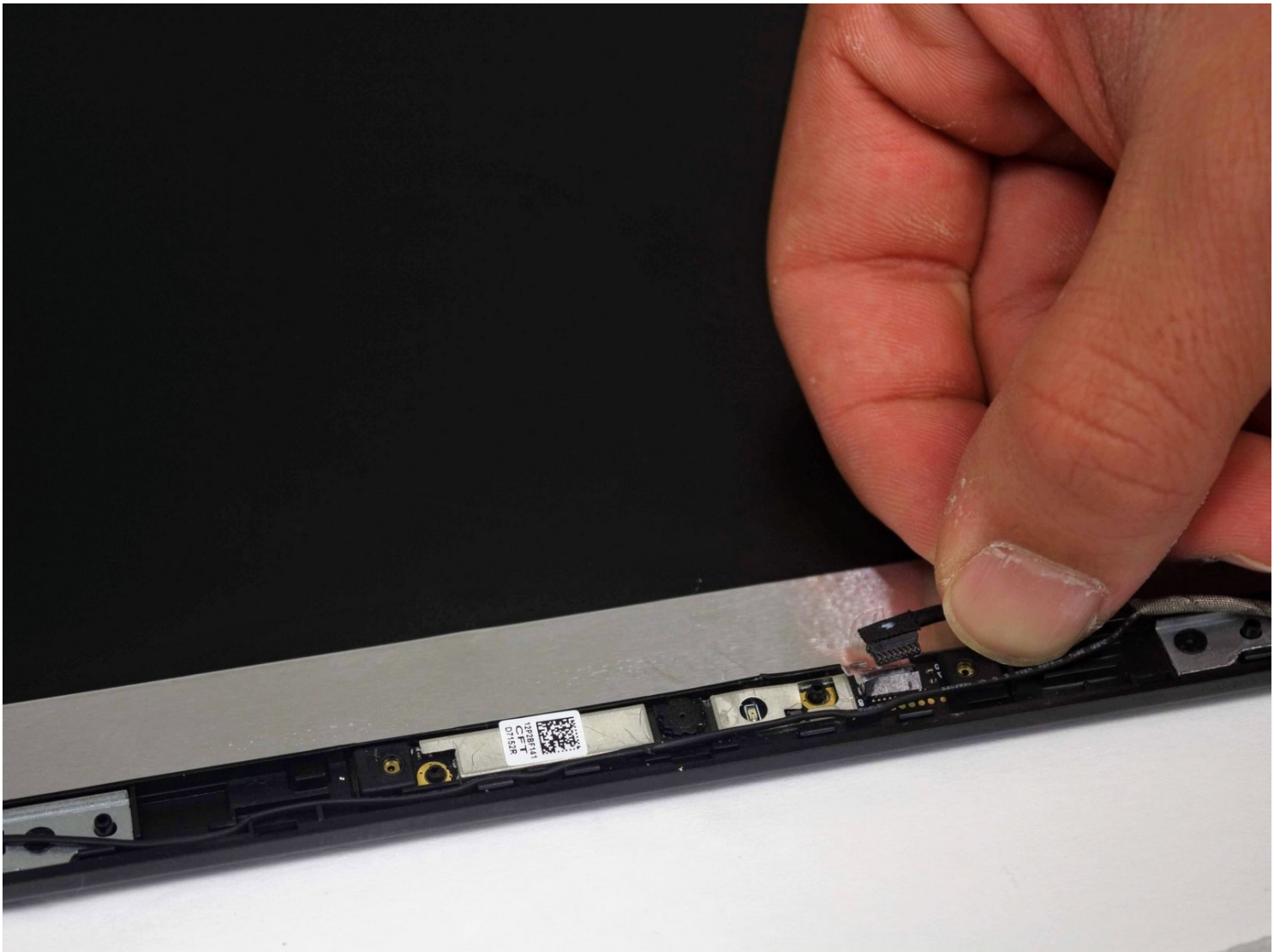




# Lenovo ThinkPad S431 Integrated Camera Replacement

This guide will show you the steps to safely...

Written By: Mohammed AlManai



# INTRODUCTION

This guide will show you the steps to safely remove the damaged integrated camera from your laptop. The integrated camera is located above the screen of your laptop, which is usually used to take pictures, create videos, and chat with others.

---

## TOOLS:

[iFixit Opening Tool](#) (1)

[Flathead 3 mm Screwdriver](#) (1)


[Phillips #1 Screwdriver](#) (1)

---

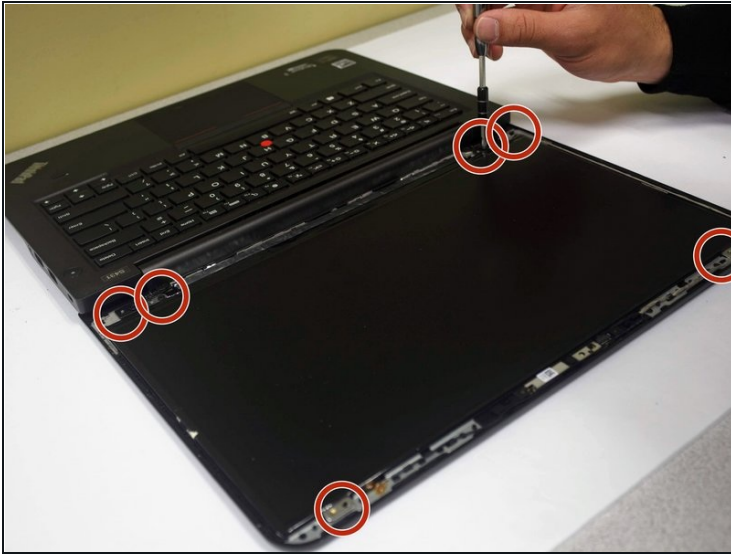
## Step 1 — Screen Assembly



- Place an opening tool under the screen cover, and pop it off.

 Using a metal object to open fragile parts of your laptop could cause damage! Instead use the opening tool listed in the tools section above.

## Step 2



- Take off the 6 screws using the Philips head #1.

## Step 3



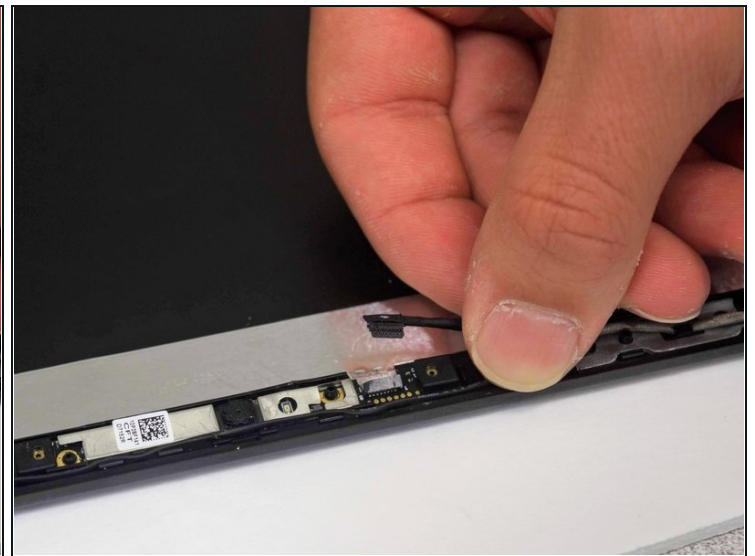
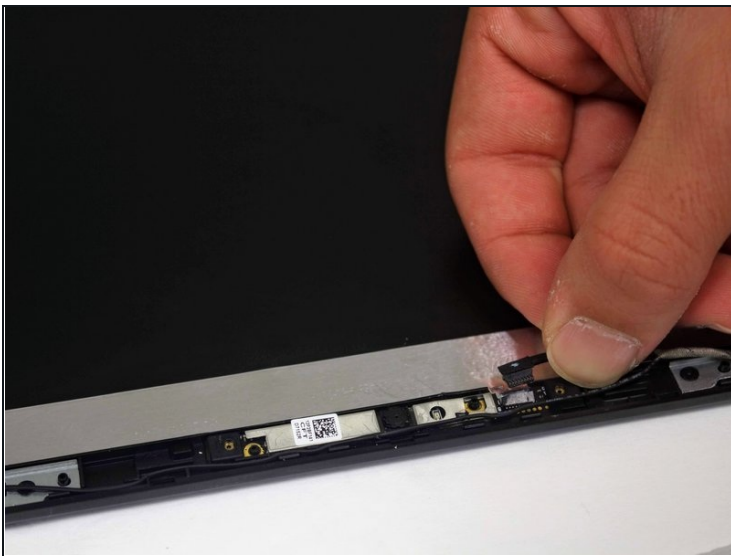
- Lift the screen out from the top.

## Step 4



- Remove the connector located at the bottom of the back of the screen.

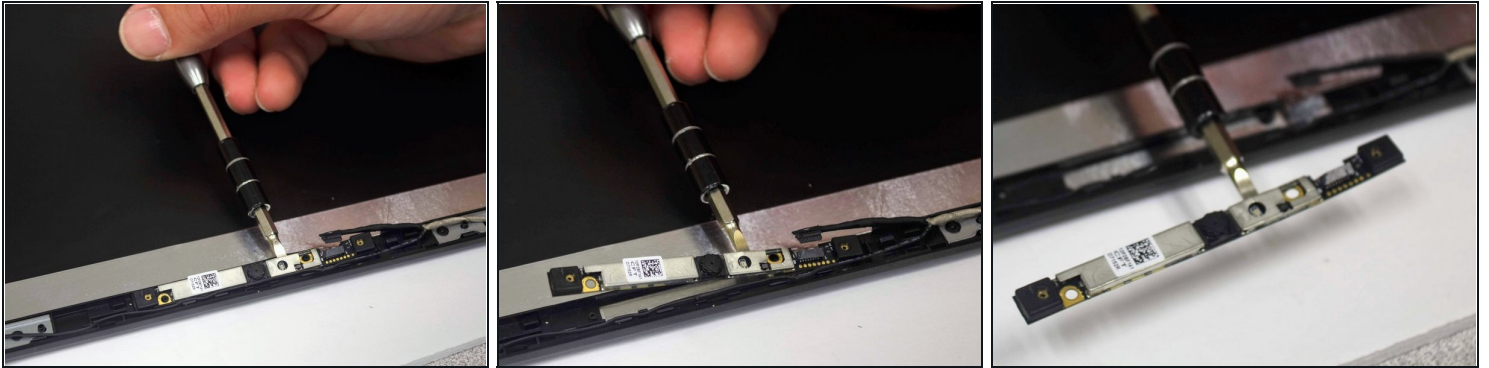
## Step 5 — Integrated Camera



- Unplug the connector. It is located on the top of the screen attached to the camera assembly.



## Step 6



- Use the [3.0 flathead](#) to lift up the silver camera strip.

---

To reassemble your device, follow these instructions in reverse order.