



How to Remove the Back Plate of a TI-NSpire

If your TI-NSpire calculator is experiencing...

Written By: John Baek



INTRODUCTION

If your TI-Nspire calculator is experiencing operational issues, it may be necessary to remove the back plate to access the inner circuitry. This repair guide will demonstrate how to safely and efficiently remove the back plate without causing any damage to the wires or connectors.

Once removed, you will have access to the battery, display, and buttons, which is essential for other troubleshooting guides that require the replacement or repair of these components. You can find the model number of your TI-Nspire on the front logo or on the back of the device. Model Number: TI-Nspire CX.



TOOLS:

Phillips #000 Screwdriver (1)

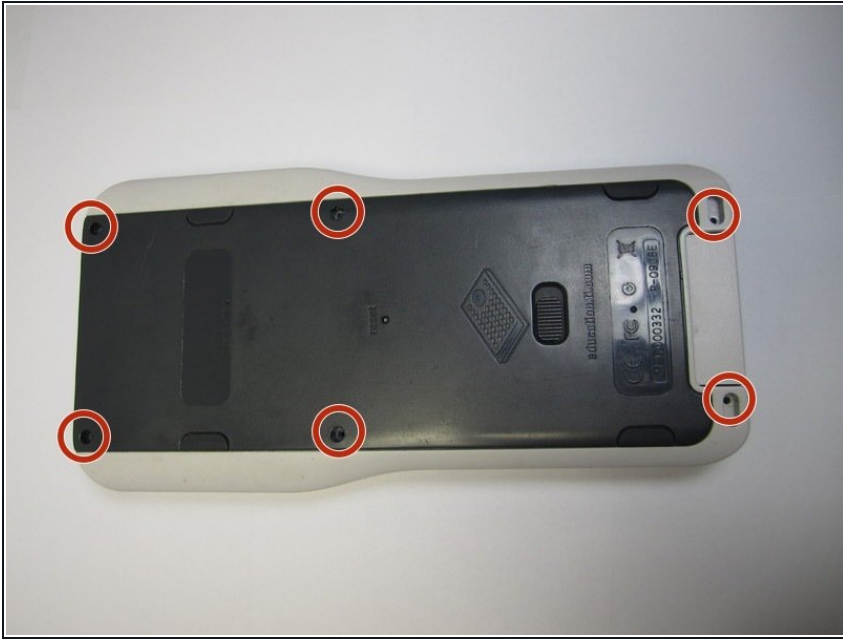
iFixit Opening Tool (1)

Step 1 — How to Remove the Back Plate of a TI-Nspire



- Place the calculator screen facing down, with the back plate facing up.

Step 2



- Remove the six 7.3 mm screws from the back of the calculator using a Phillips #000 screwdriver.

Step 3



- Slide the latch to the right to release the keypad.
- Pull the keypad down at the same time.

Step 4



- Remove the screw near the bottom of the calculator on the front side.
- ⓘ The screw is behind where the keyboard normally sits.

Step 5



- Turn the calculator over so the back plate faces up.
- Use the iFixit Opening Tool to carefully pry the back plate out at the bottom right corner.
- ⓘ The prying order is arbitrary. The importance is to pry across the length of the calculator.
- Repeat the prying step on the middle right side, moving along the perimeter of the calculator.
- Repeat the prying step on the top right corner.

Step 6



- Use your hands to manually separate the now loosened back plate from the calculator.

To reassemble your device, carefully push the back plate back onto the calculator. Then replace the screws back into the back plate.