



Dell Inspiron 1425 Display Assembly Replacement

Written By: Terrence15



INTRODUCTION

In this guide, we will be showing you how to remove and replace the Display Assembly.



TOOLS:

- [Phillips #0 Screwdriver](#) (1)
-

Step 1 — Remove the Screws

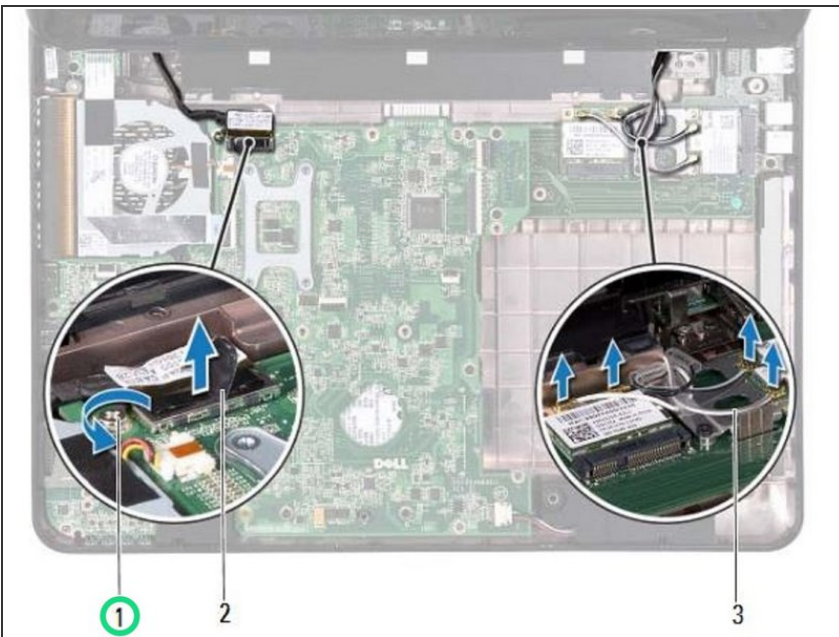


⚠ WARNING: Before working inside your computer, read the safety information that shipped with your computer. Follow the instructions in ["Before You Begin"](#).

⚠ CAUTION: To avoid electrostatic discharge, ground yourself by using a wrist grounding strap or by periodically touching an unpainted metal surface (such as a connector on your computer).

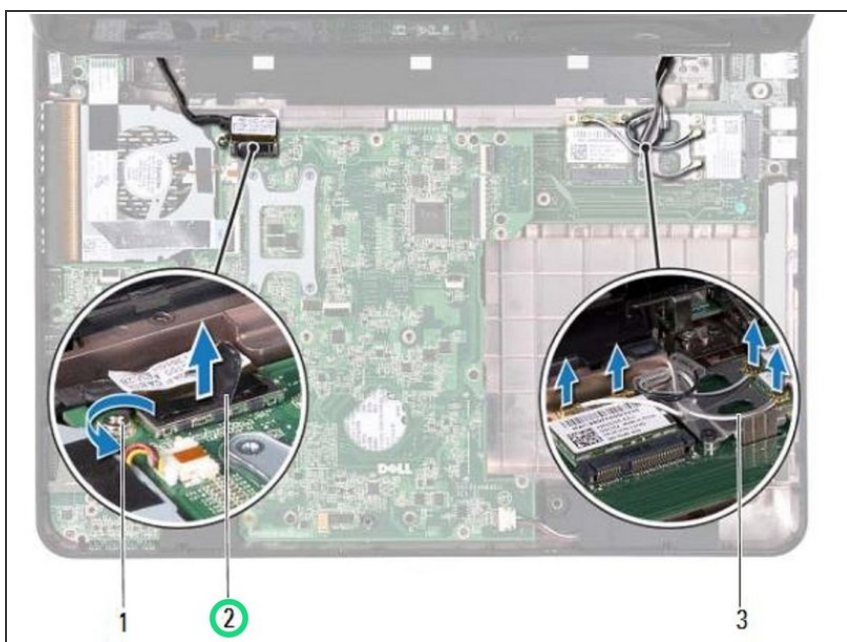
- Remove the two screws from the computer base.

Step 2 — Loosen the Cable



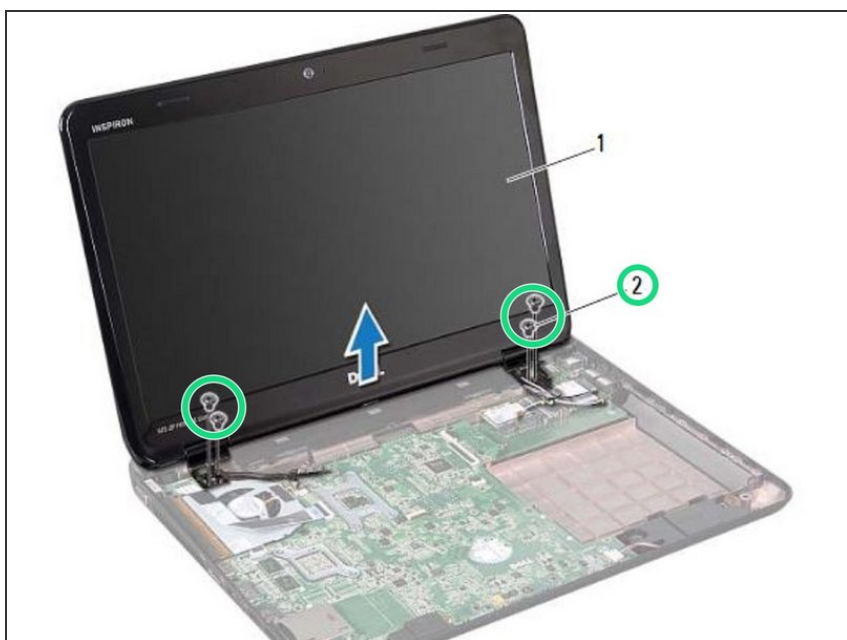
- Loosen the display cable grounding screw.

Step 3 — Disconnecting the Display Cable



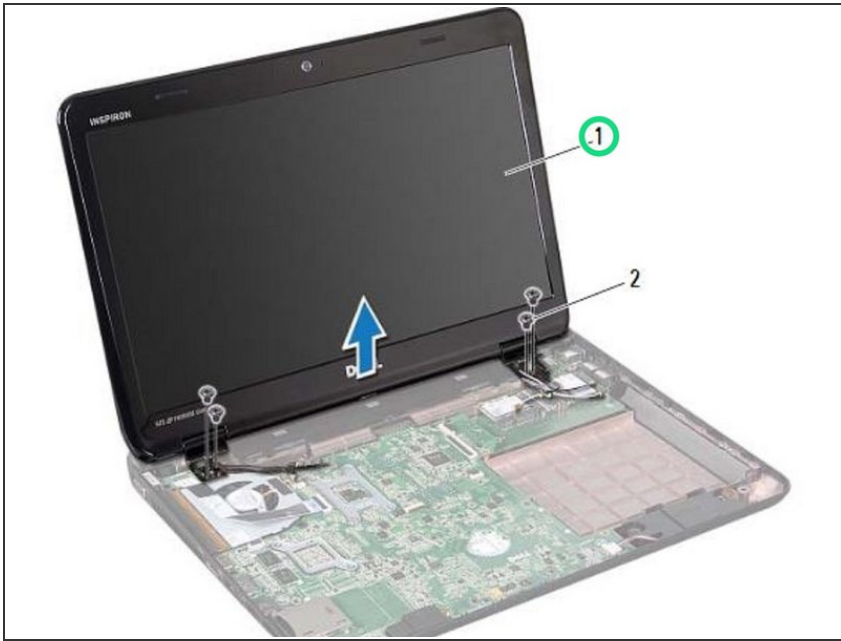
- Disconnect the display cable from the connector on the system board.

Step 4 — Remove the Screws



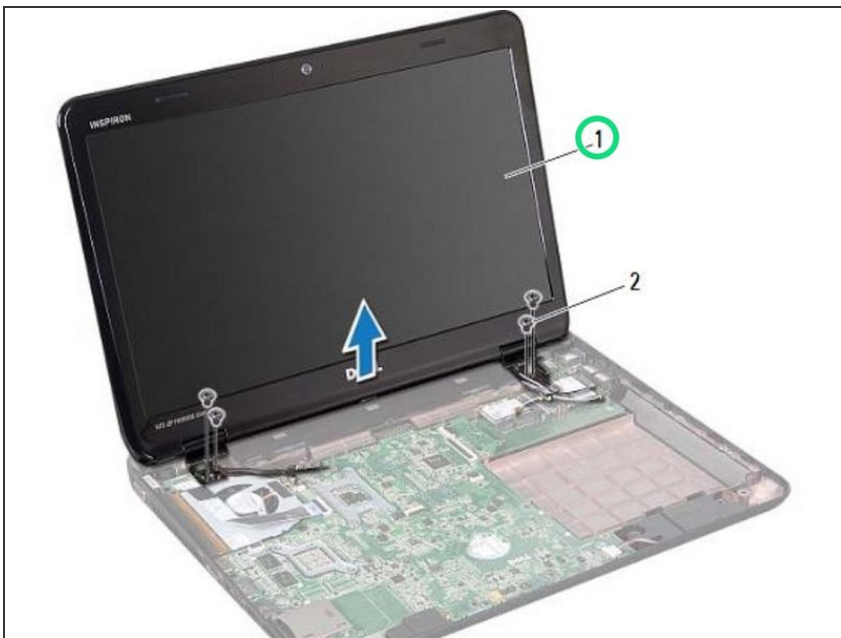
- Remove the four screws that secure the display assembly to the computer base.

Step 5 — Removing the Display Assembly



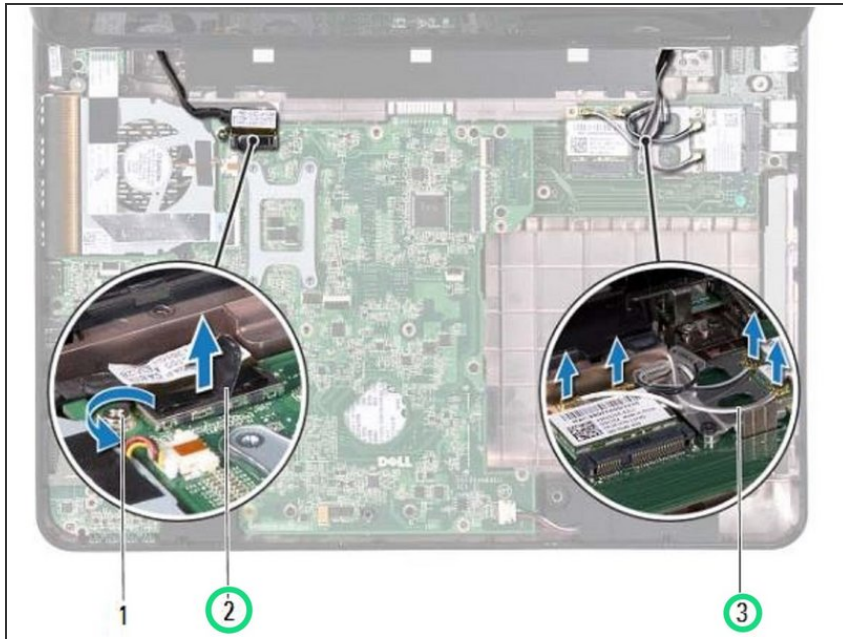
- Lift the display assembly off the computer base.

Step 6 — Placing the Display Assembly



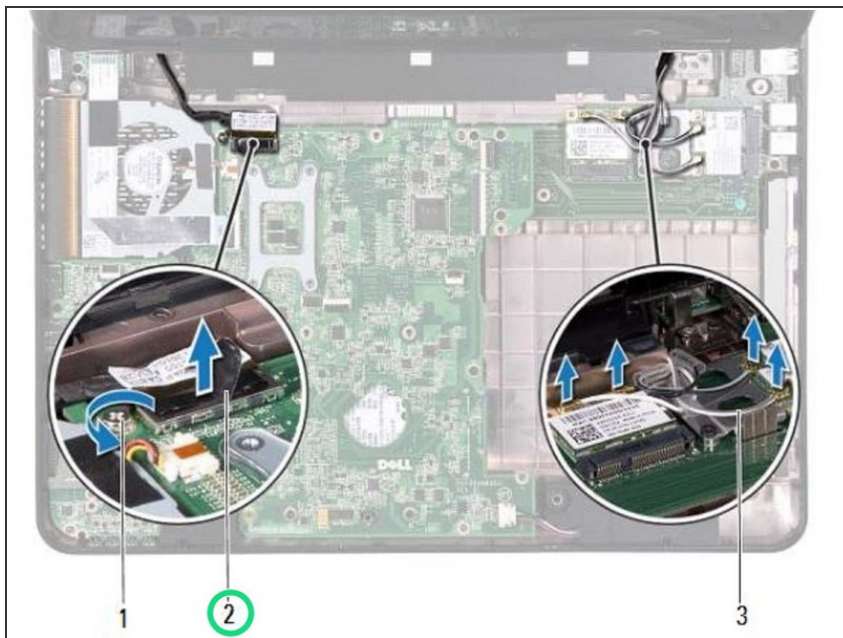
- Place the **NEW** display assembly in position and replace the four screws that secure the display assembly to the computer base.

Step 7 — Routing the Cables



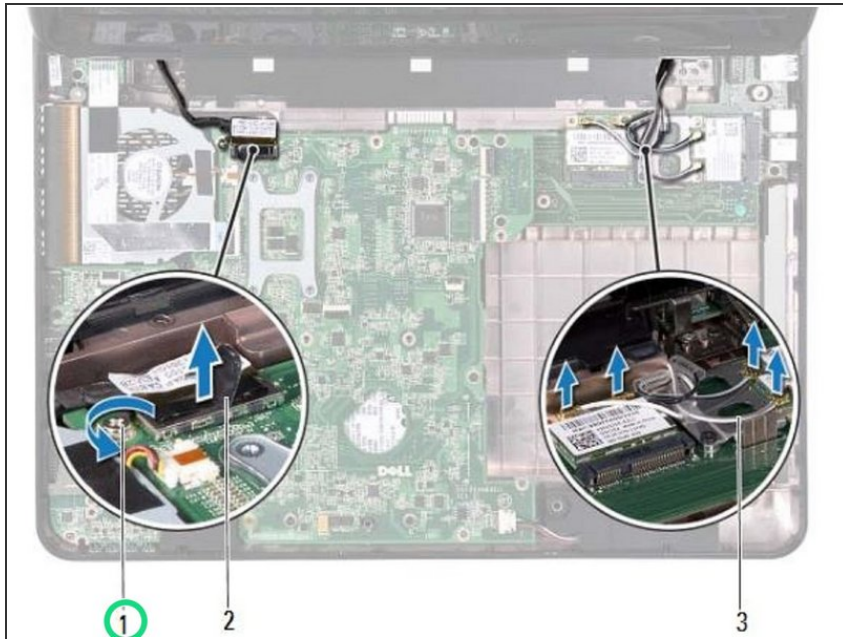
- Route the display cable and Mini-Card antenna cables through the routing guides.

Step 8 — Connecting the Display Cable



- Connect the display cable to the connector on the system board.

Step 9 — Tighten the Cable Screw



- Tighten the display cable grounding screw.

Step 10 — Replace the Screws



- Replace the two screws at the bottom of the computer.