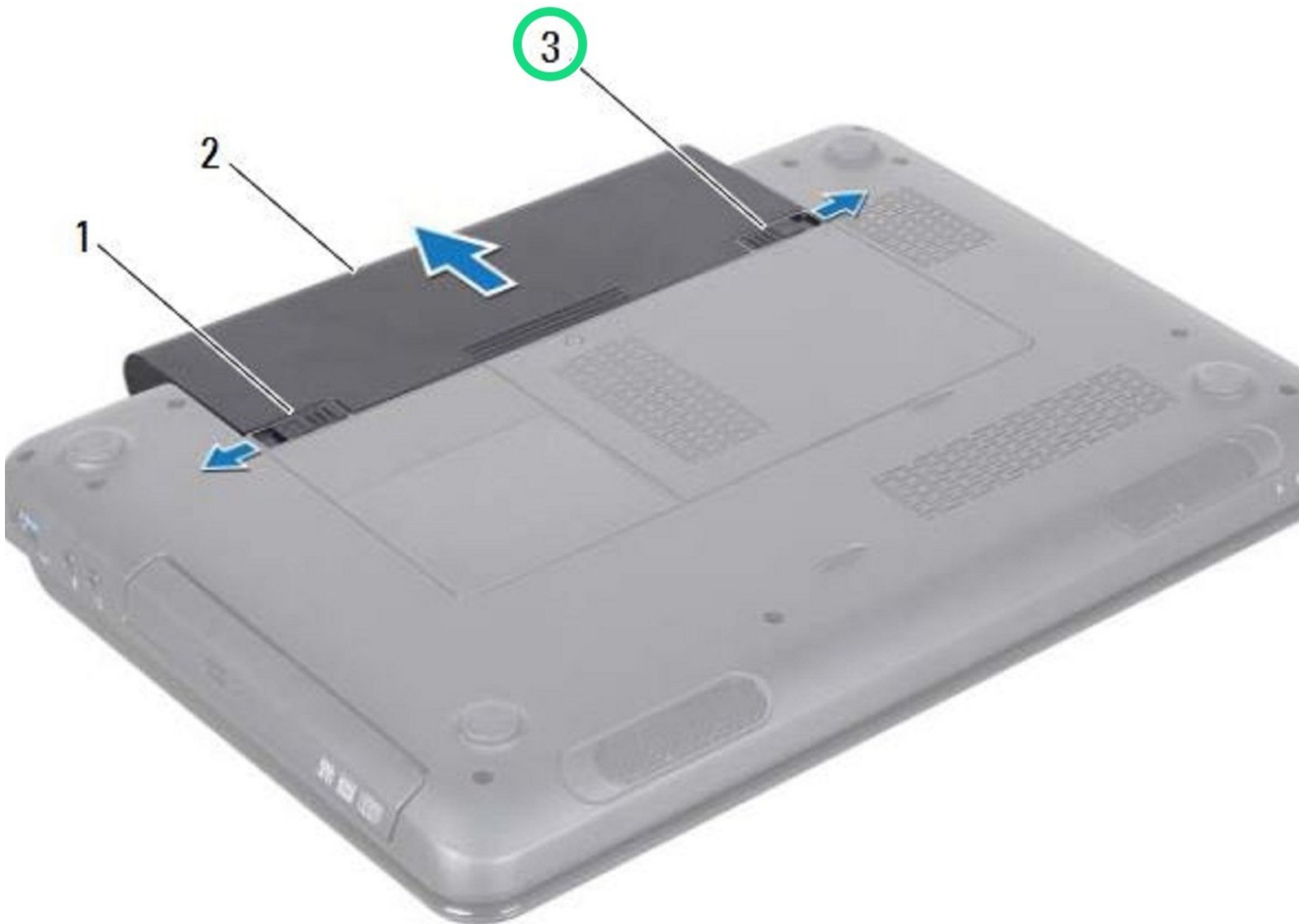




Dell Inspiron 1425 Battery Replacement

Written By: Terrence15



INTRODUCTION

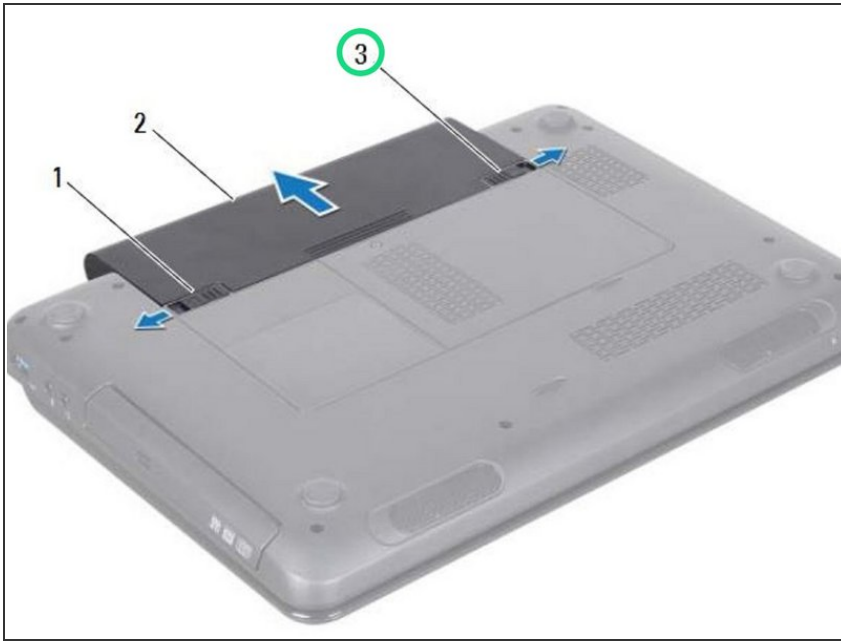
In this guide, we will show you how to remove and replace the Battery.



TOOLS:

- [Phillips #0 Screwdriver](#) (1)
-

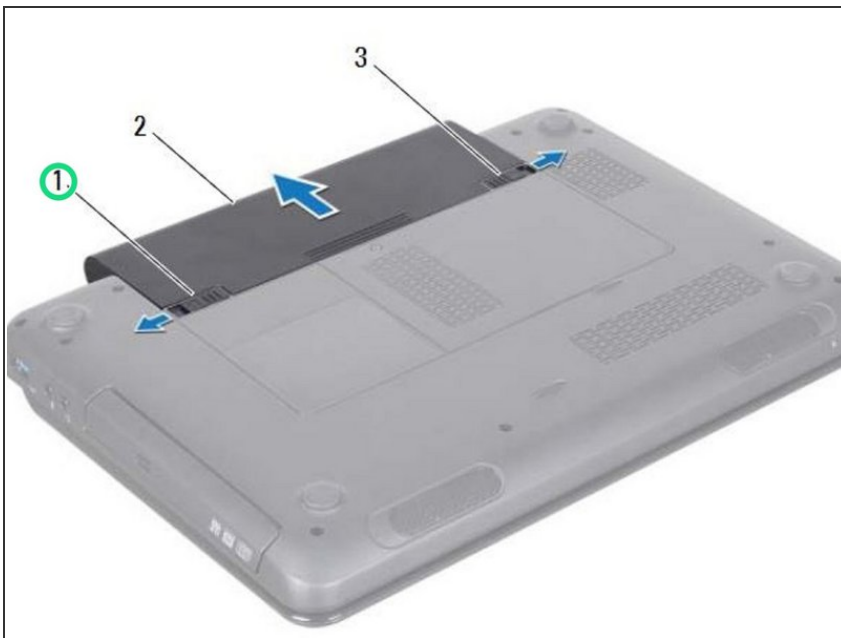
Step 1 — Sliding the Lock Latch



⚠ WARNING: Before working inside your computer, read the safety information that shipped with your computer. Follow the instructions in ["Before You Begin"](#).

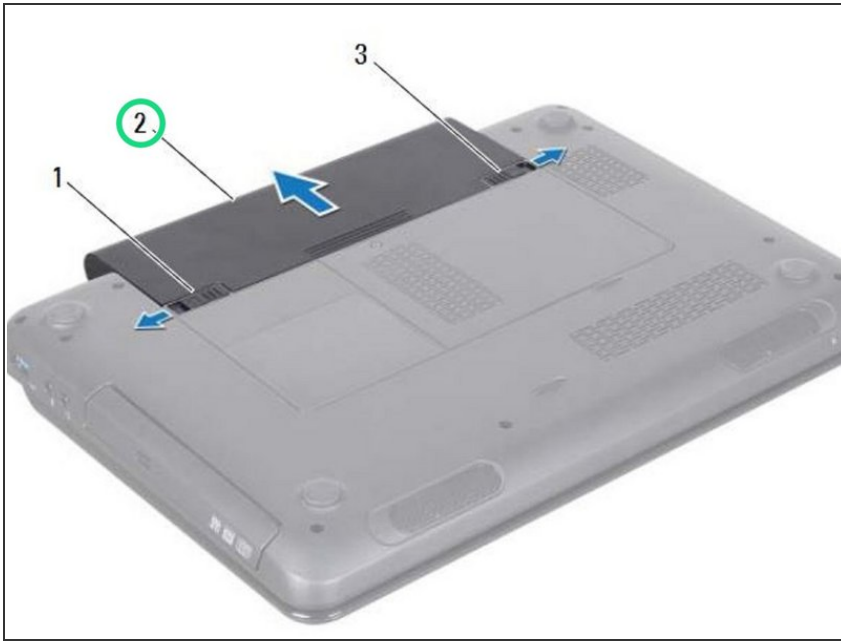
- Shut down the computer and turn it over.
- Slide the battery lock latch until it clicks into place.

Step 2 — Sliding the Release Latch



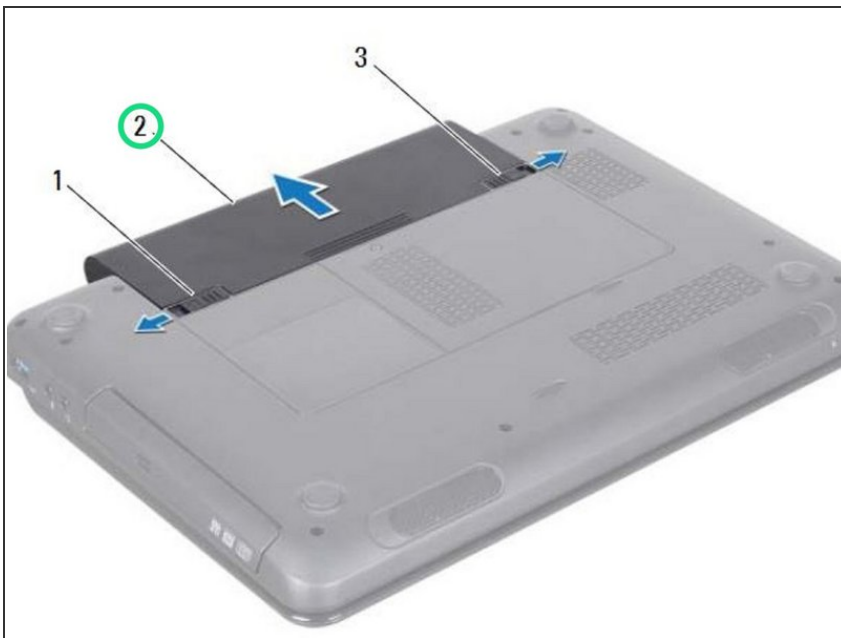
- Slide the battery release latch to the unlock position.

Step 3 — Removing the Battery



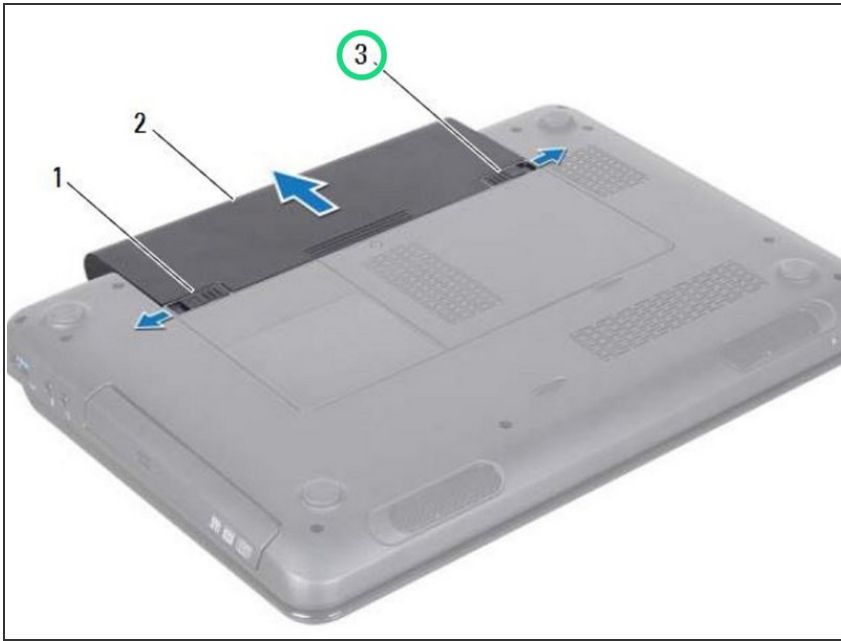
- Slide and lift the battery out of the battery bay.

Step 4 — Sliding the Battery



- Slide the **NEW** battery into the battery bay until it clicks into place.

Step 5 — Sliding the Lock Latch



- Slide the battery lock latch to the lock position.