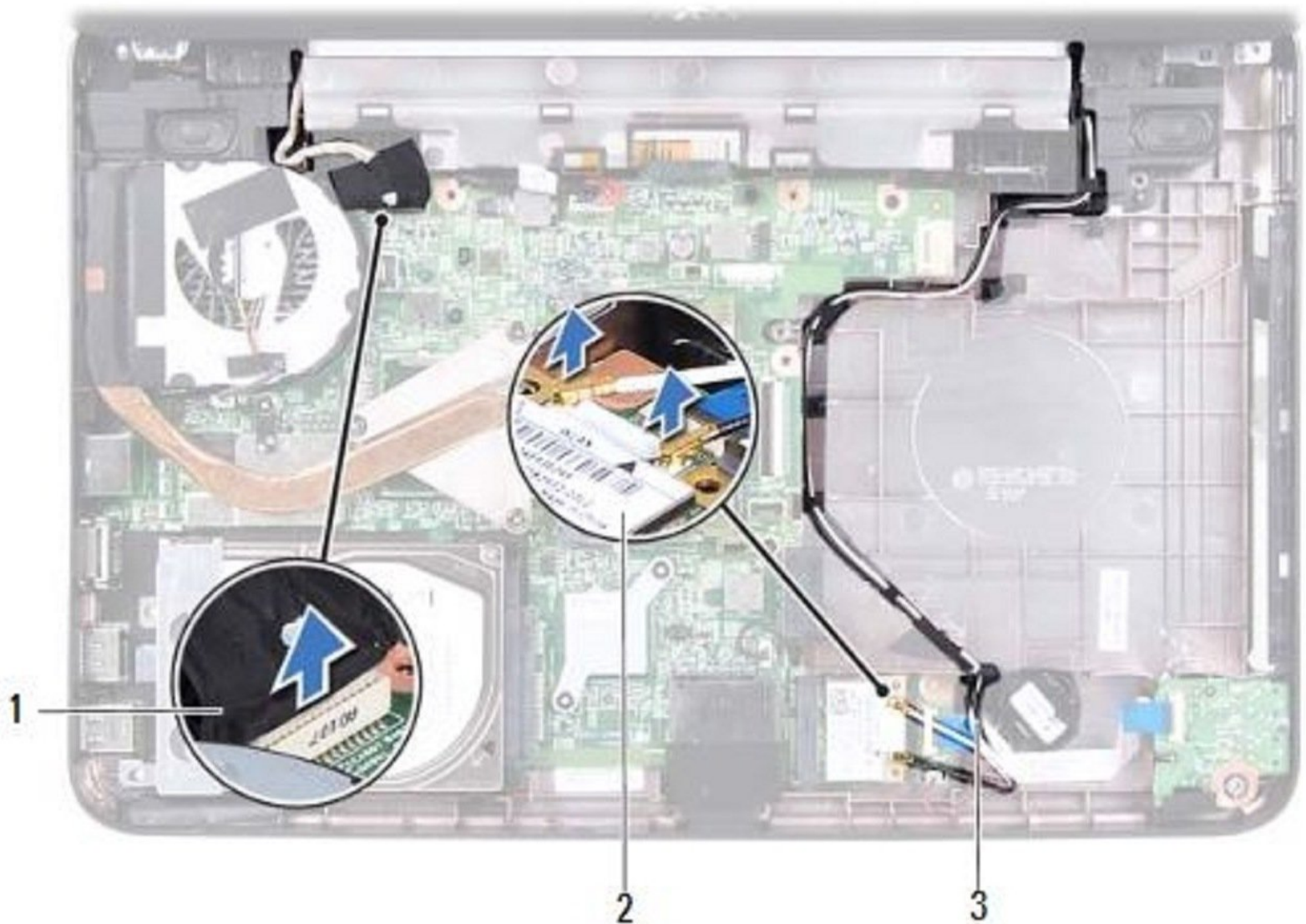




# Dell Inspiron 14 N4050 Display Assembly Replacement

Written By: Terrence15



---

## INTRODUCTION

In this guide, we will show you how to remove and replace the Display Assembly.



### TOOLS:

- [Phillips #0 Screwdriver](#) (1)
-

## Step 1 — Disconnecting the Display Cable

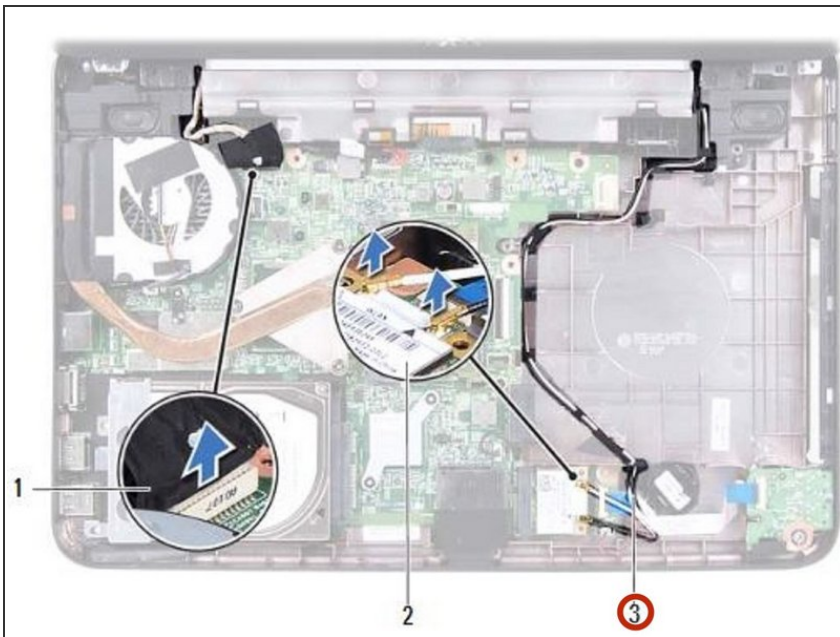


**⚠ WARNING:** Before working inside your computer, read the safety information that shipped with your computer. Follow the instructions in ["Before You Begin"](#).

**⚠ CAUTION:** To avoid electrostatic discharge, ground yourself by using a wrist grounding strap or by periodically touching an unpainted metal surface (such as a connector on your computer).

- Disconnect the display cable from the connector on the system board.

## Step 2 — Disconnecting the Mini-Card Antenna Cables



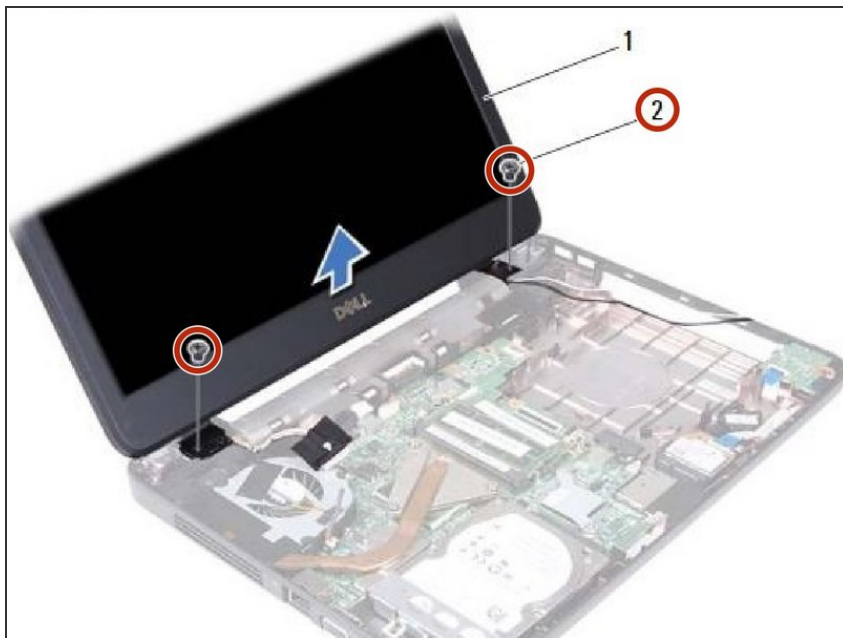
- Disconnect the Mini-Card antenna cables from the connectors on the Mini-Card.

### Step 3 — Removing the Cables



- Make a note of the display cable and Mini-Card antenna cables routing and remove the cables from the routing guides.

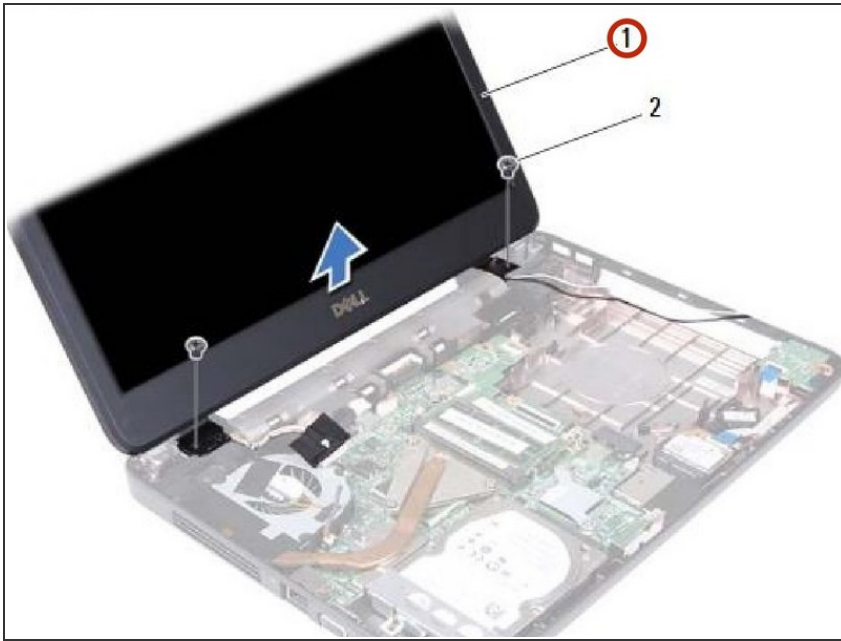
### Step 4 — Remove the Screws



- Remove the two screws that secure the display assembly to the computer base.

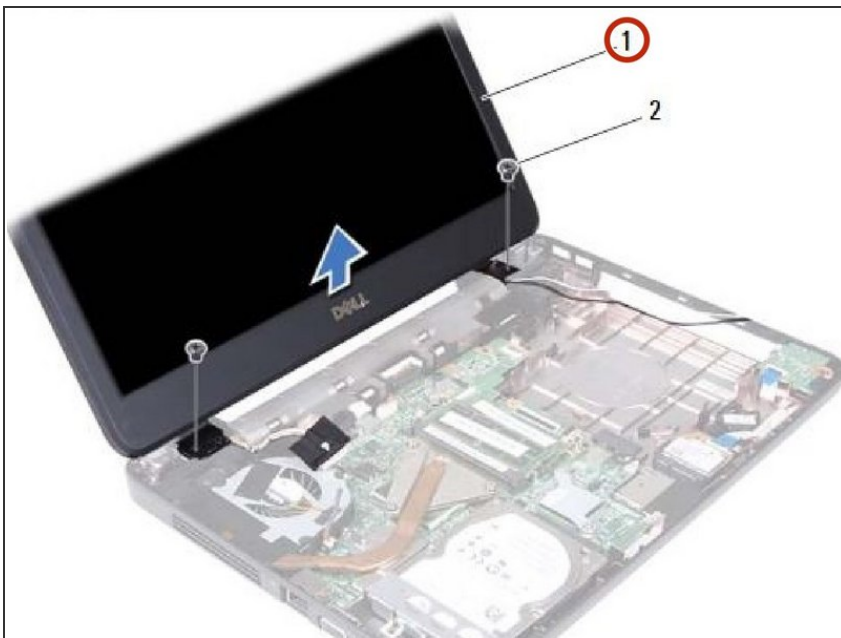


## Step 5 — Removing the Display Assembly



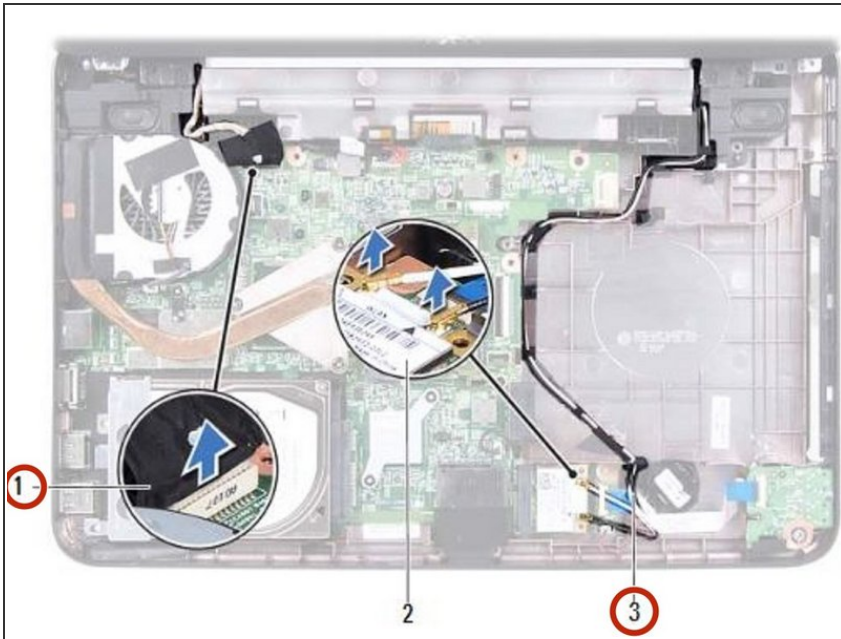
- Lift and remove the display assembly out of the computer base.

## Step 6 — Placing the Display Assembly



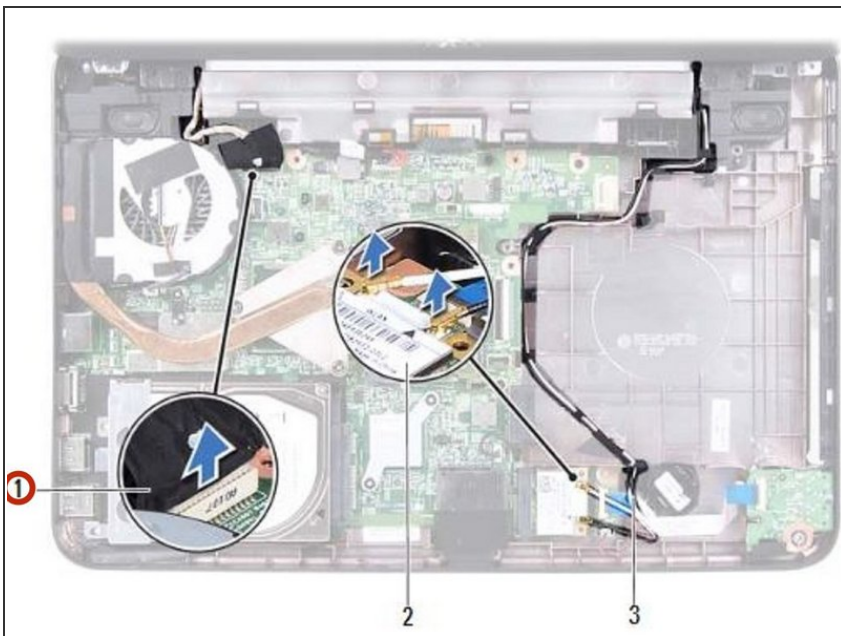
- Place the **NEW** display assembly in position and replace the two screws that secure the display assembly to the computer base.

## Step 7 — Routing the Display Cable



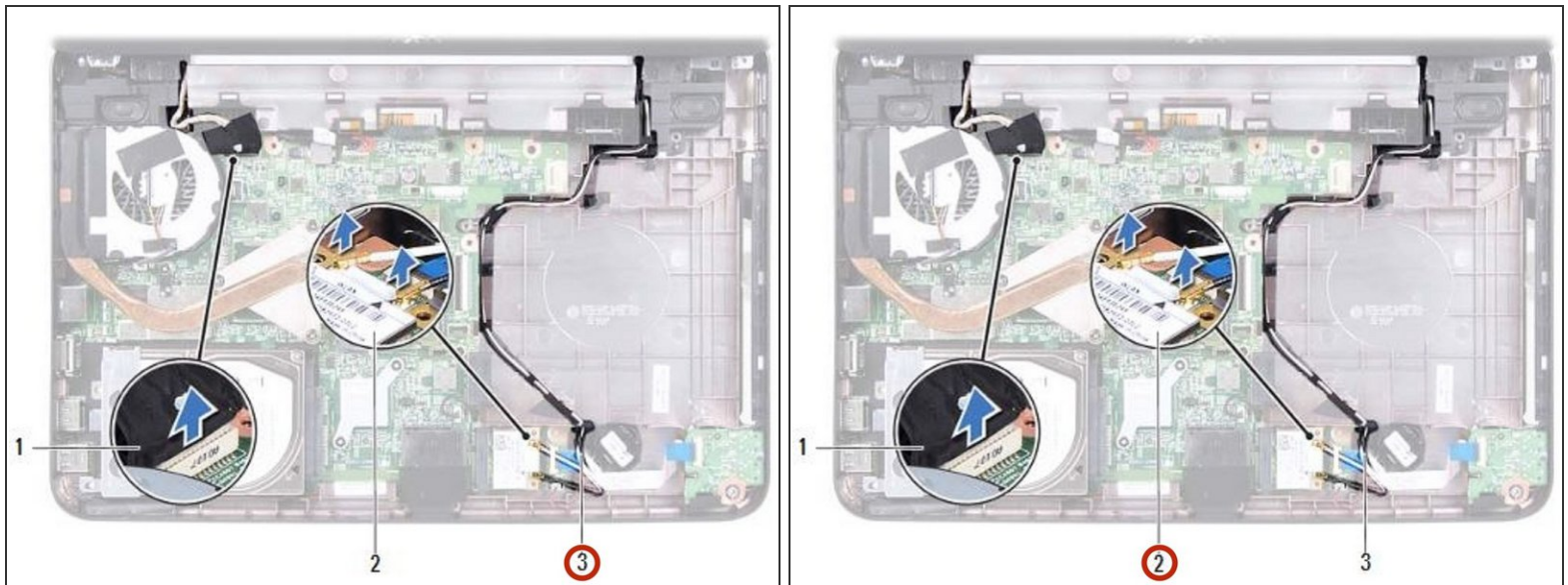
- Route the display cable and Mini-Card antenna cables through the routing guides.

## Step 8 — Connecting the Display Cable



- Connect the display cable to the connector on the system board.

## Step 9 — Conencting the Antenna Cables



- Connect the Mini-Card antenna cables to the Mini-Card.