



Nook Tablet Battery Replacement

This guide will show you how to remove and...

Written By: Holly Lowe



INTRODUCTION

This guide will show you how to remove and replace the battery of your Nook Tablet.

TOOLS:

[Spudger](#) (1)

[iFixit Opening Tool](#) (1)

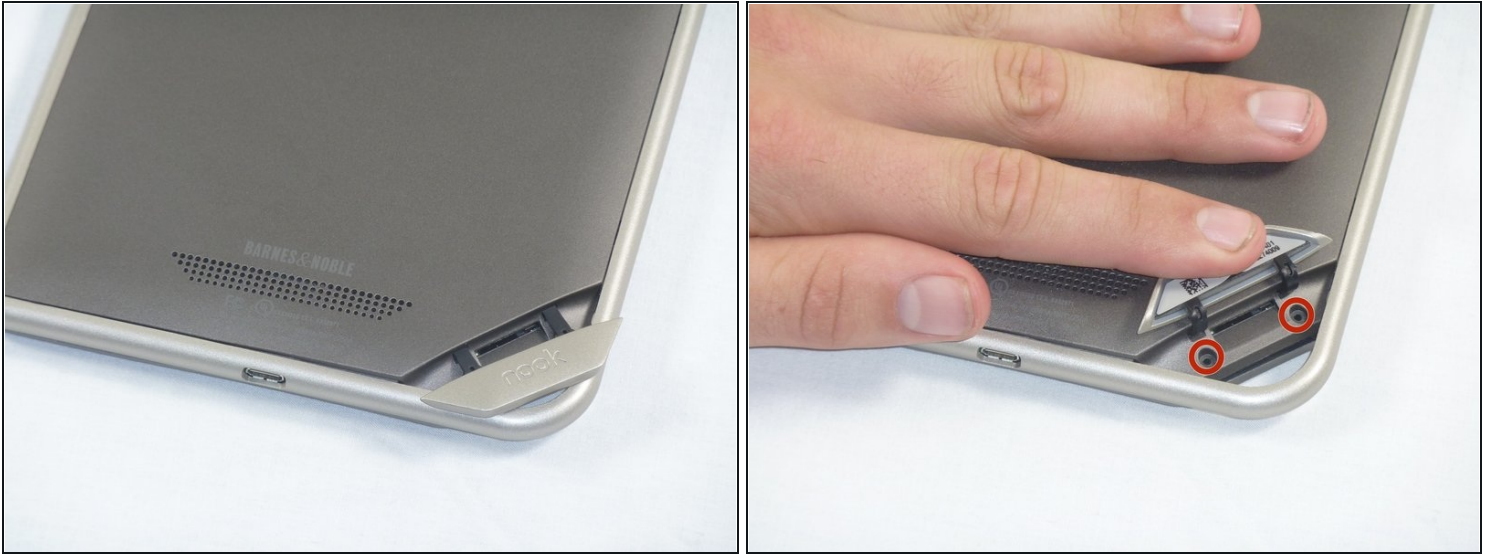
[T5 Torx Screwdriver](#) (1)

Step 1 — Back Cover



- Flip the Nook over.

Step 2



- Lift the flap that reads "Nook" to reveal the tape that is underneath. Remove the memory card if one is present.
- Remove the tape covering the round holes to reveal two T5 Torx screws.
- Remove the two T5 Torx screws securing the back cover.

Step 3



- Insert the flat end of a spudger between the front panel and the rear assembly.
 - ① Though these photos show a screwdriver, use a spudger or plastic opening tool in order to prevent damage to the device.
- Use a spudger to lift the the back panel from the rest of the Nook.

Step 4



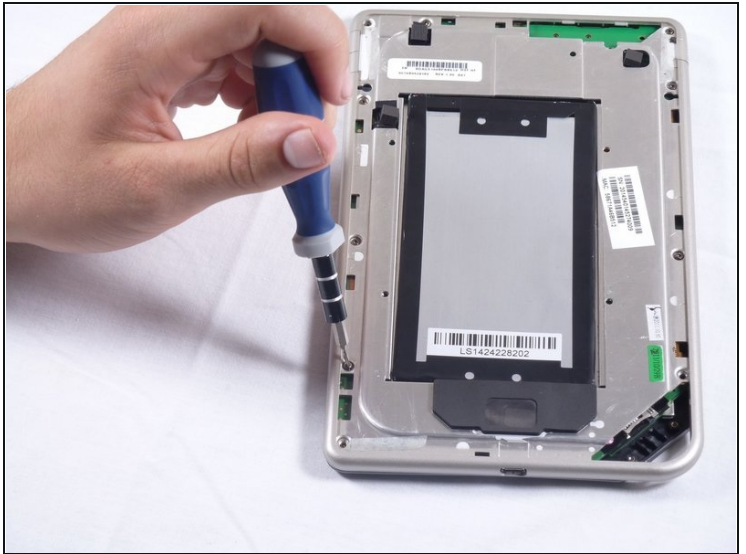
- Slide the spudger around the edges of the Nook to loosen the back panel.

Step 5



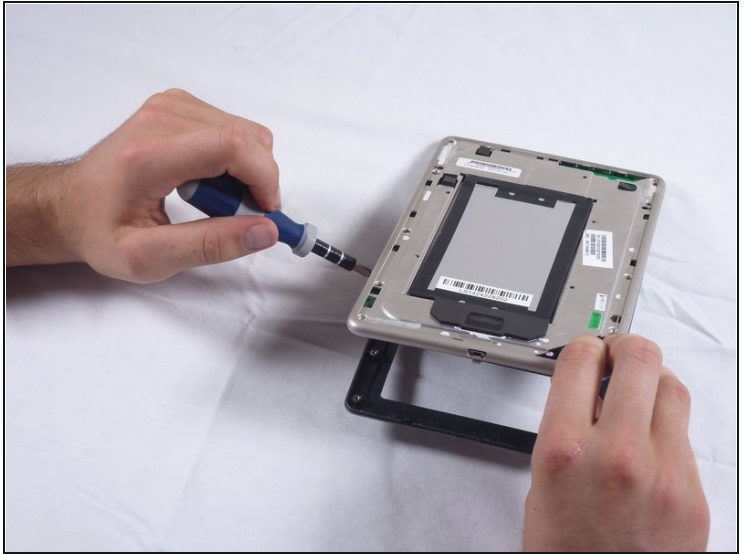
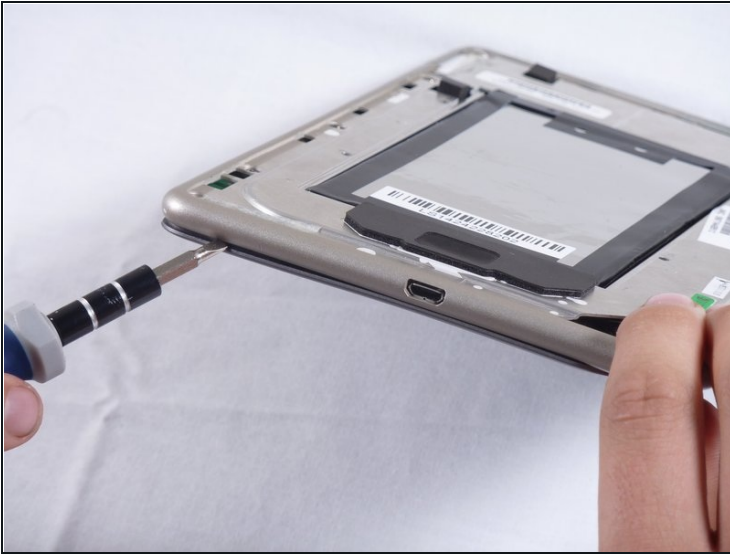
- Pull the back panel off the Nook.

Step 6 — Screen Bezel



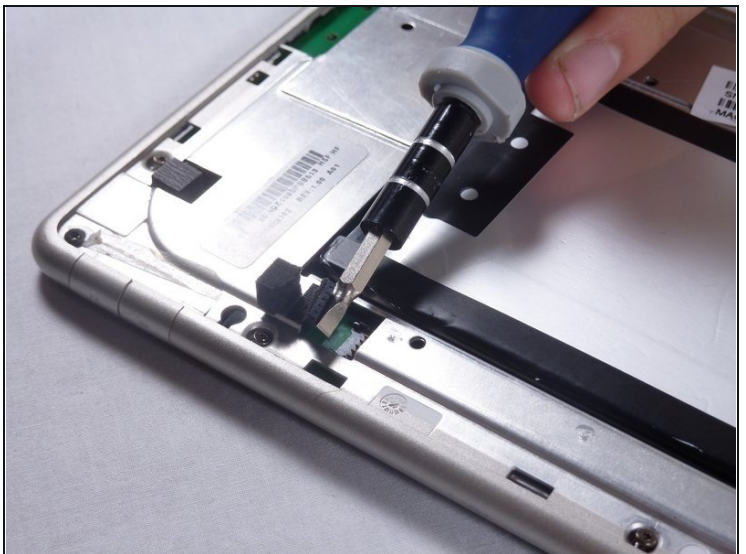
- Remove the ten T5 screws from around the edges of the silver midframe.

Step 7



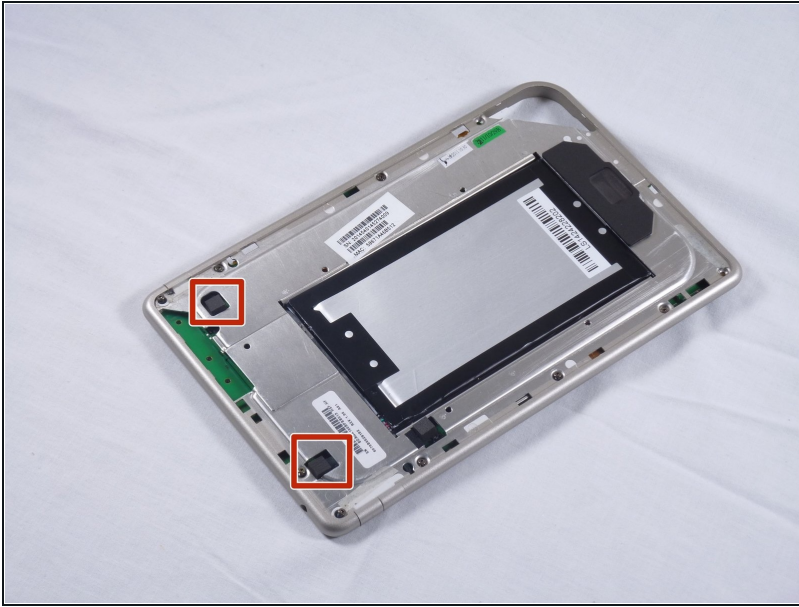
- Using a spudger or plastic opening tool, carefully pry the screen bezel away from the silver midframe.

Step 8 — Disconnect the Battery



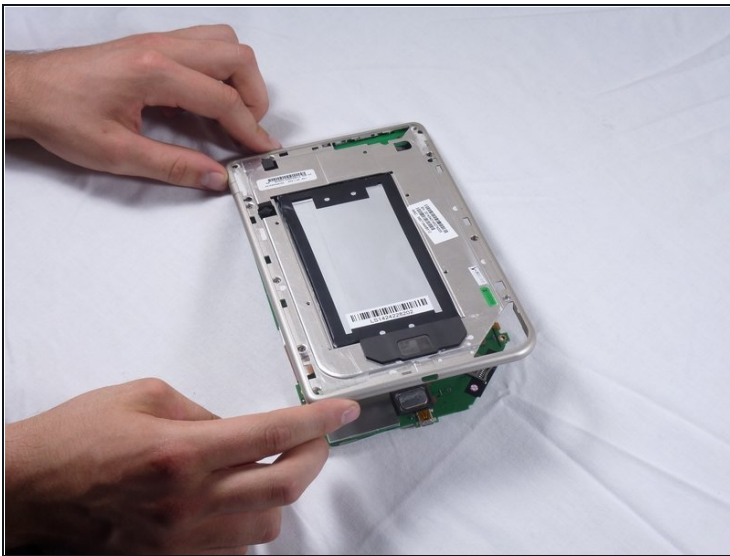
- Lift up the foam pad at the corner of the battery to reveal the battery connector.
 - Use a spudger or plastic opening tool to disconnect the battery cable from the motherboard.
- ⚠ These photos show a screwdriver, but we recommend using a nonconductive tool like a spudger to prevent a potential short.

Step 9 — Midframe



- Lift up the foam that covers the power connector and volume connector.
- Disconnect the power and volume cables from their sockets on the motherboard.

Step 10



- Carefully lift the silver midframe away from the motherboard and display assembly.

Step 11 — Taking Out the Battery

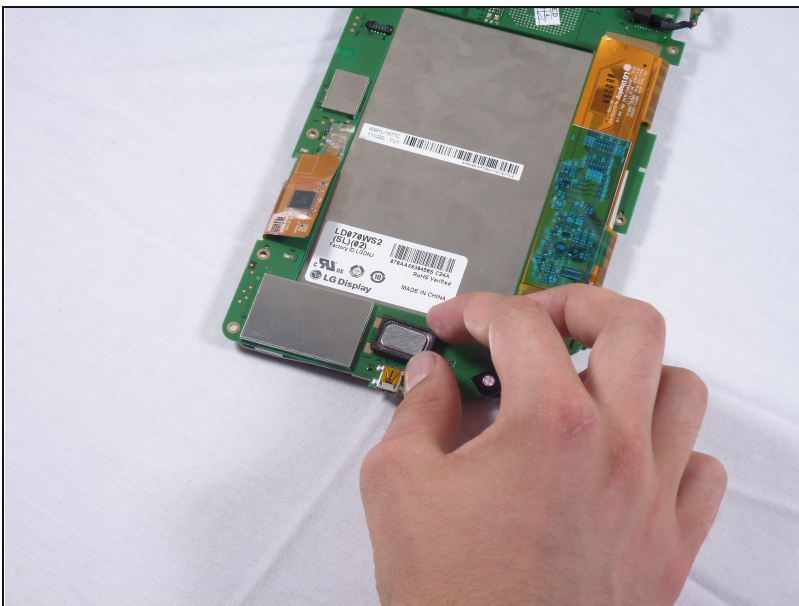


- Set aside the motherboard and focus on the metal backing containing the battery.
- It is not necessary to remove the battery to replace the display. Move on to Step 11.
- Use the screwdriver or plastic prying tool around the edges of the battery to pry it from its slot in the metal backing.

⚠ The battery may be held with adhesive. Do not panic if it feels like you are prying too hard just apply some force until it is no longer stuck.

- Pick up the battery and remove it making sure to free the cords in the upper left hand corner by sliding it out rather than lifting it.

Step 12 — Notes for Reassembly



⚠ When replacing the motherboard make sure that the speaker assembly component (small rectangular piece) is in place. It is not attached and needs to be properly aligned.

To reassemble your device, follow these instructions in reverse order.