



Keurig 2.0-400 Mini Pump Replacement

After reading this guide, you will be able to replace the air pump if there are any issues brewing coffee.

Written By: Alec Jamosmos



INTRODUCTION

In this guide, you will replace the mini pump. This is necessary if the Keurig is leaking or if liquid is not dispensed properly.

TOOLS:

- [Phillips #1 Screwdriver](#) (1)
 - [Metal Spudger](#) (1)
 - [iFixit Opening Tools](#) (1)
-

Step 1 — Water Reservoir



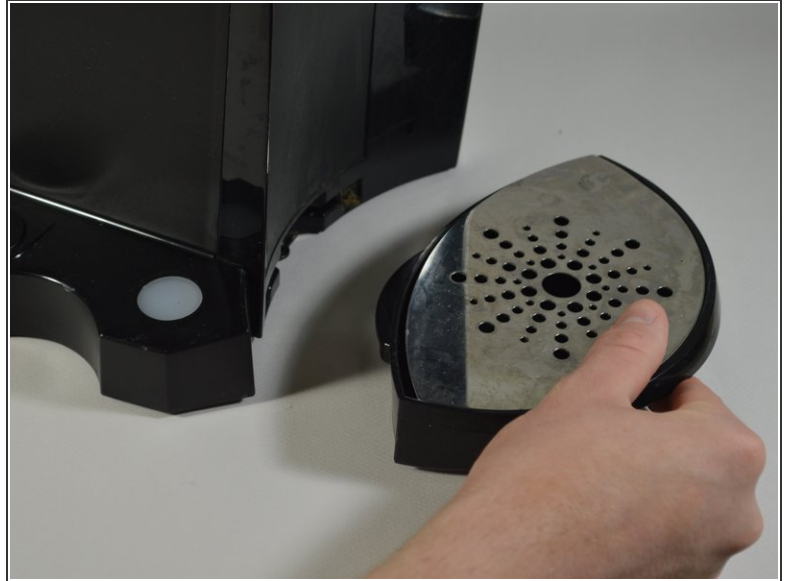
- Locate and grab the Water Reservoir with your hands.

Step 2



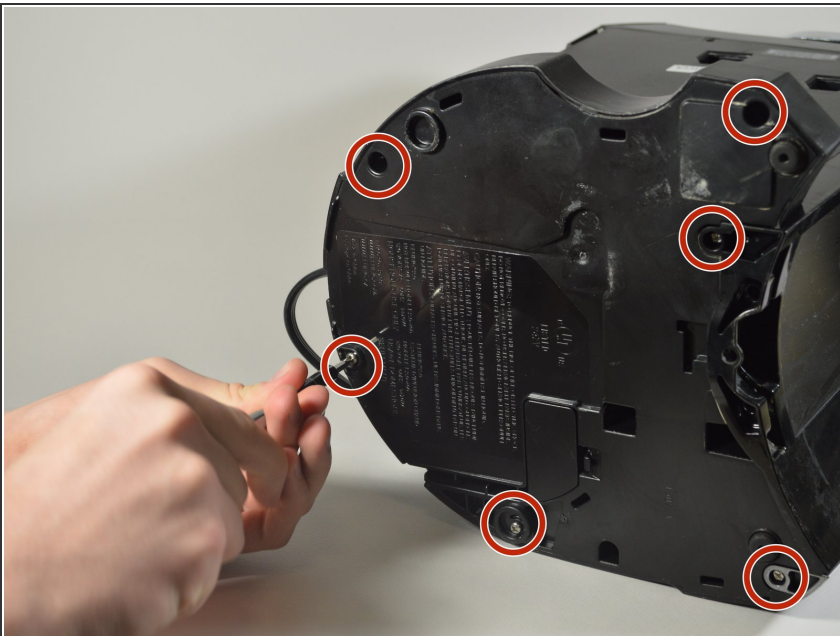
- Lift the Water Reservoir up. It should be easy to separate it from the main part of the brewer.

Step 3 — Circuit Board



- Remove the Drip Tray by pulling it out of the device.
- ⓘ This Drip Tray is the detachable bottom part of the Keurig machine where you place a cup or mug.

Step 4



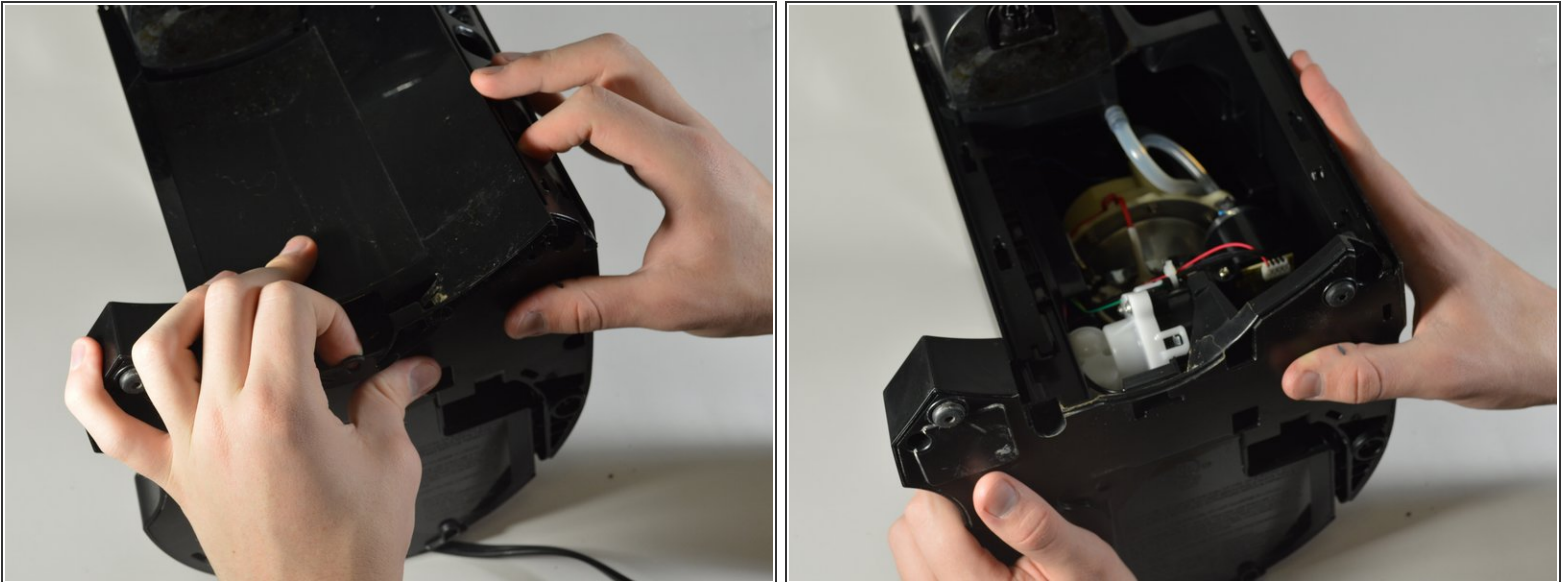
- Using the Phillips #1 screwdriver, remove the six 140mm screws from the bottom of the Keurig machine.
- ⓘ If it is hard to unscrew using only the Phillips #1 screw head, insert the 60mm Shaft Extension into the back end of the screwdriver to help you.

Step 5



- Use the metal spudger to separate the silver panel on the right side of the Keurig machine.
- Tilt the brewer upside down and grab the bottom of the silver panel
- Using your hands, peel off the silver panel from the Keurig machine.

Step 6



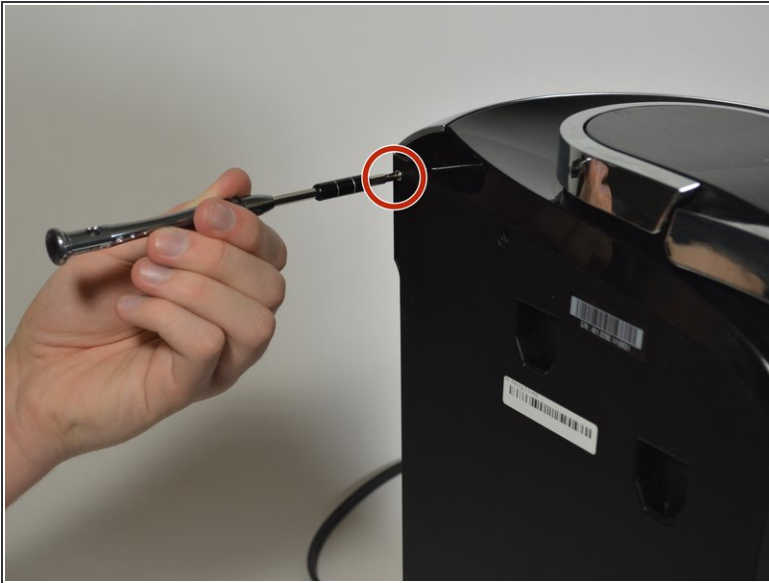
- With one hand, place one finger inside the frame where the silver panel was attached and hold the base.
- With the other hand, pull down to pop out the front housing of the Keurig machine.
- ❗ You should now be able to see the components inside the Keurig machine.

Step 7



- Using your hands, pry the back exterior of the brewer from the right side of the Keurig.
- Use the blue opening tool to separate the top right silver panel from the back exterior.

Step 8



- Use the Phillips #1 screwdriver to remove the 120mm screw located on the top left corner from the side of the brewer where the water reservoir was.
- Use the Phillips #1 screwdriver to remove another 120mm screw located under the end of the empty slot running across the left side of the Keurig.

Step 9



- Separate the side panel from the top frame of the brewer, using the blue opening tool for help if necessary.

Step 10



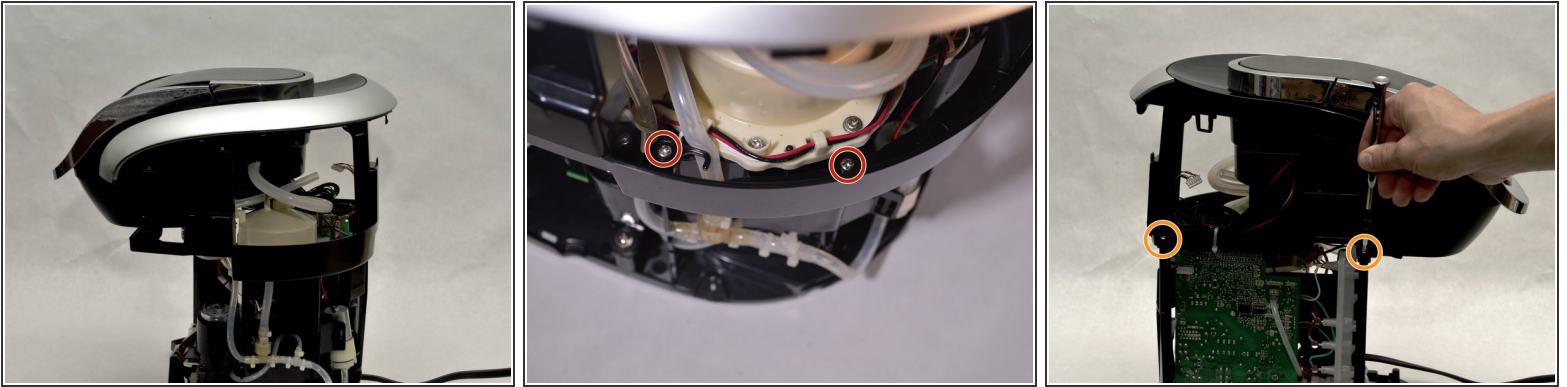
- Place the brewer on its side as shown in the picture
- Using the metal spudger, pry away the housing surrounding the sides of the Keurig machine from the bottom.
- Work your way around the perimeter of the base.

Step 11



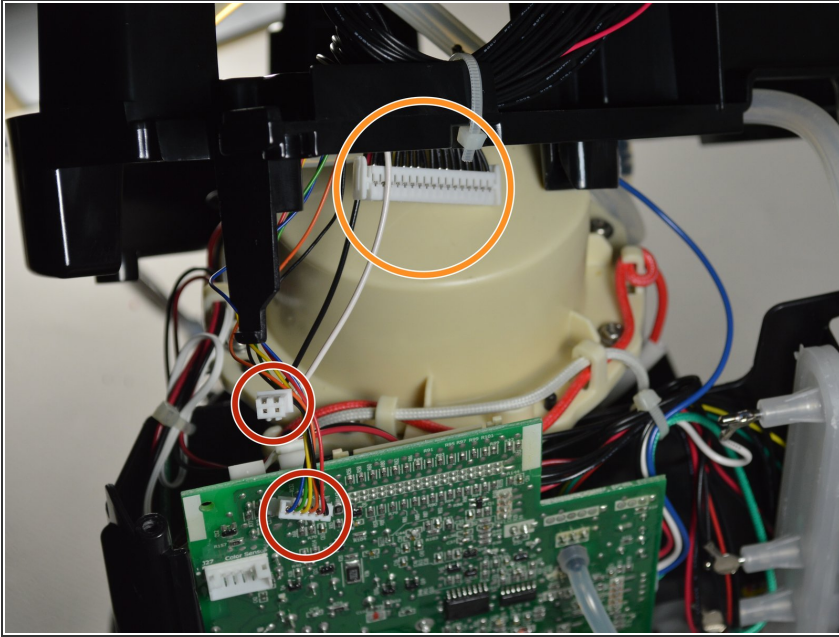
- Remove the entire back exterior surrounding the Keurig by removing the latches connecting the back exterior to the silver frame on top. To do this, use the metal spudger to lift the latches up and out.
- ⓘ The inside of the Keurig should now be exposed.

Step 12



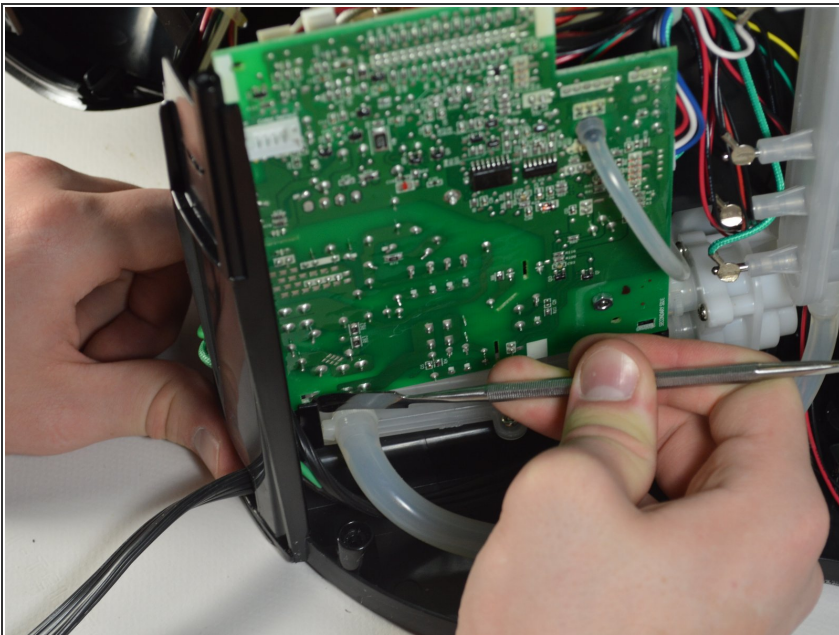
- Reorient the brewer as shown in the picture.
- Locate the four 140mm screws holding the top frame of the Keurig in place. Remove these screws using the Phillips #1 screwdriver.
 - Two of the screws are on the inside of the frame close to the water heater.
 - ⓘ You may need to decrease the size of the screwdriver in order for it to fit inside the frame. Do this by taking out the bit extender.
 - The other two screws are located on the outside of the frame.

Step 13



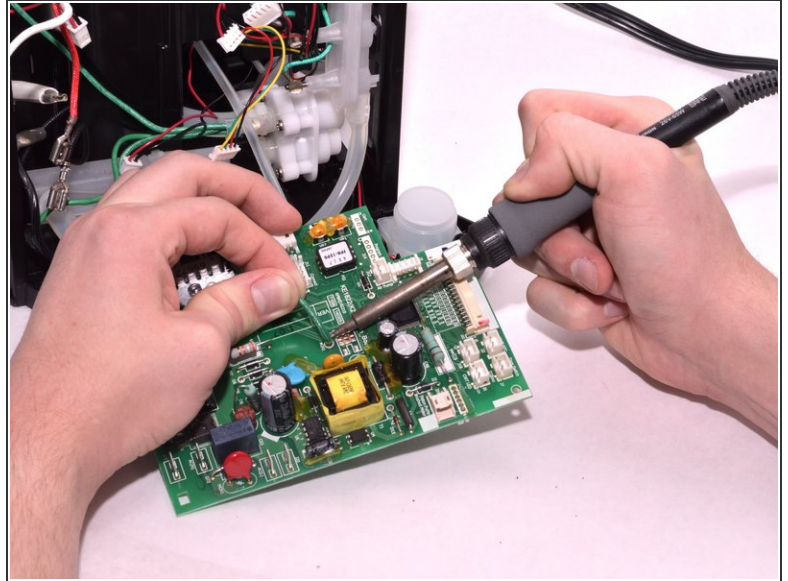
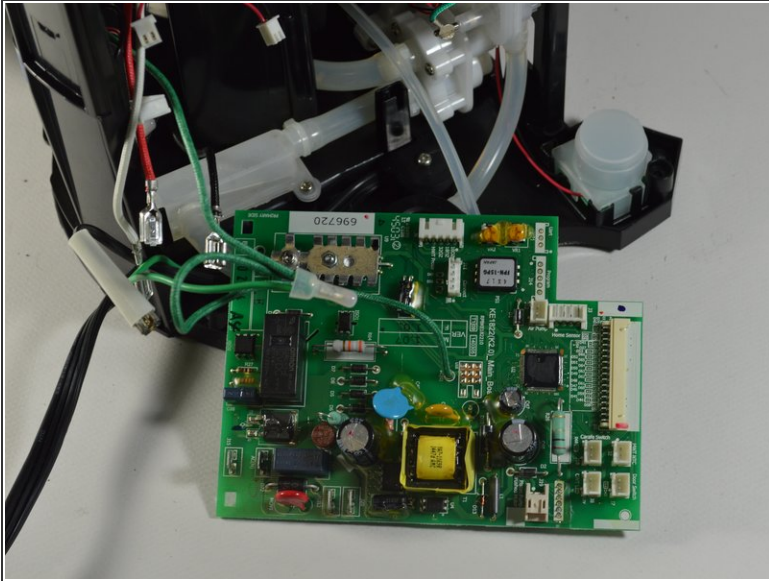
- Remove the top of the framing that encases the circuit board.
- Remove the wires that are connected to the top of the circuit board.
 - Pull out the multicolored wires by their bases.
 - The bundle with black wires and one red wire is connected to the very top of the circuit board. To remove these wires, squeeze in the white tabs as you pull them out.

Step 14



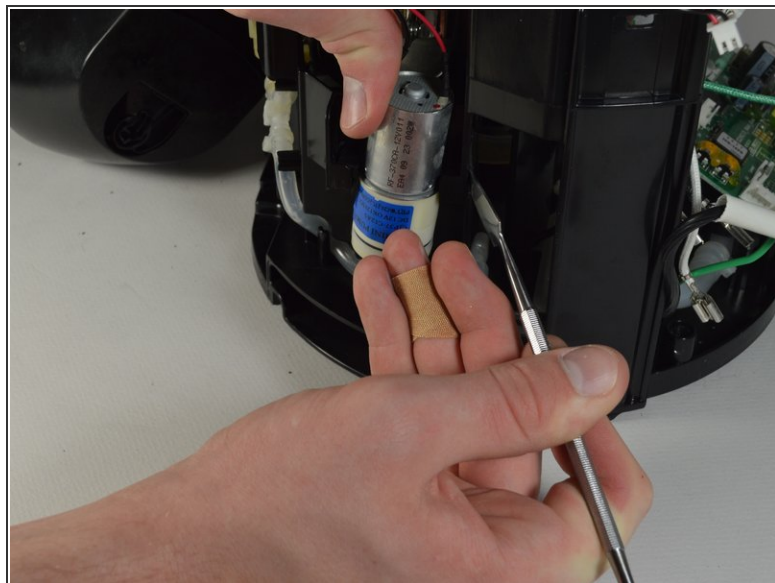
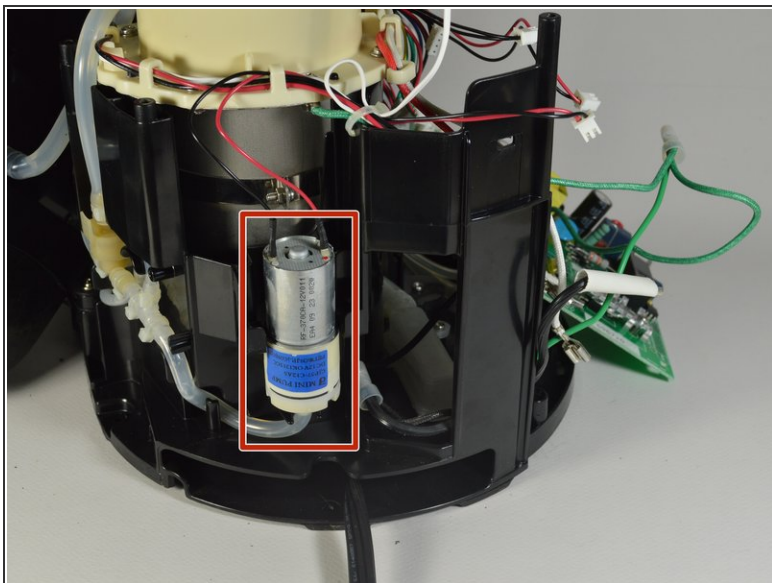
- Using the metal spudger, snap the circuit board out of the latches on the bottom of the board.

Step 15



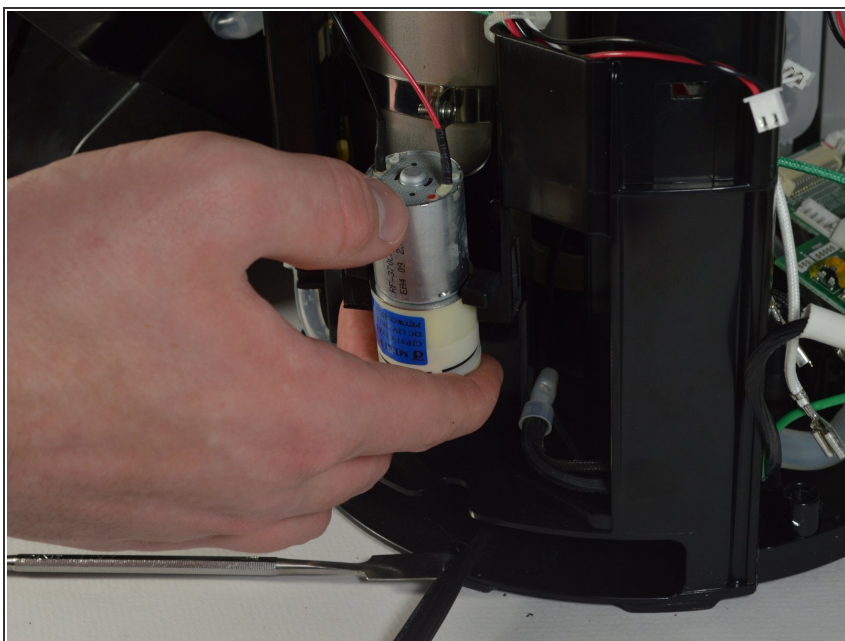
- Unplug the rest of the wires connecting to the circuit board by pulling them out by their bases.
- ⓘ In order to free the circuit board completely, you have to desolder the connections that restrain it. Use our [How to Solder and Desolder Connections Guide](#) to properly and safely conduct this procedure.
- Remove the circuit board from the device.

Step 16 — Mini Pump



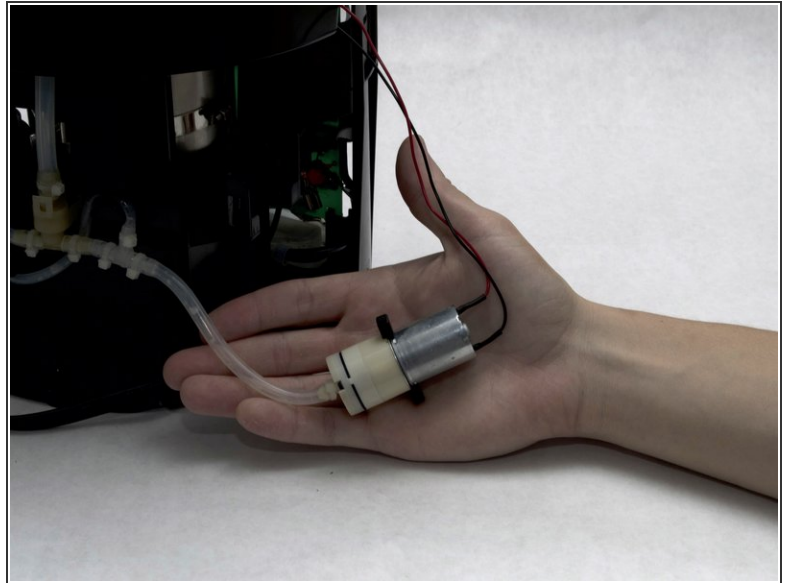
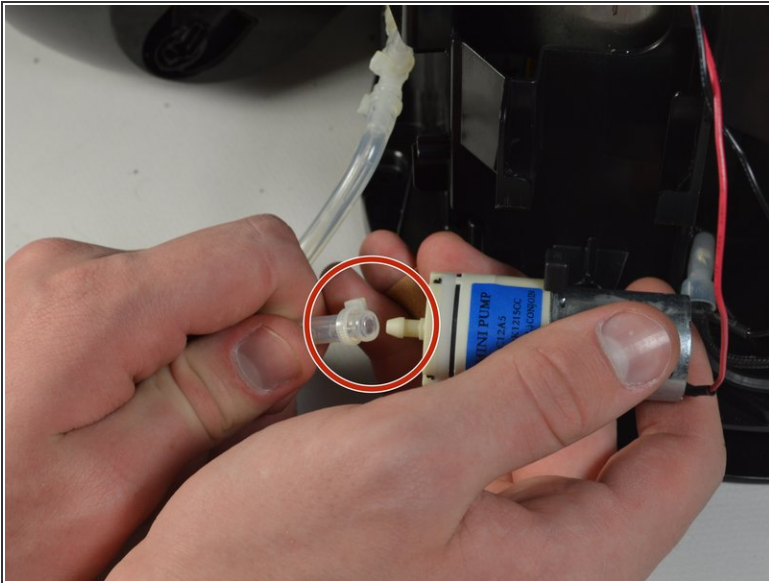
- Pry it out from the frame by using the metal spudger.

Step 17



- Lift the Mini Pump up and out of the frame using your hands.

Step 18



- Remove the wires connecting the Mini Pump to the Keurig, including the air tube.
- ⓘ The Mini Pump is should now be free from the brewer.

To reassemble your device, follow these instructions in reverse order.