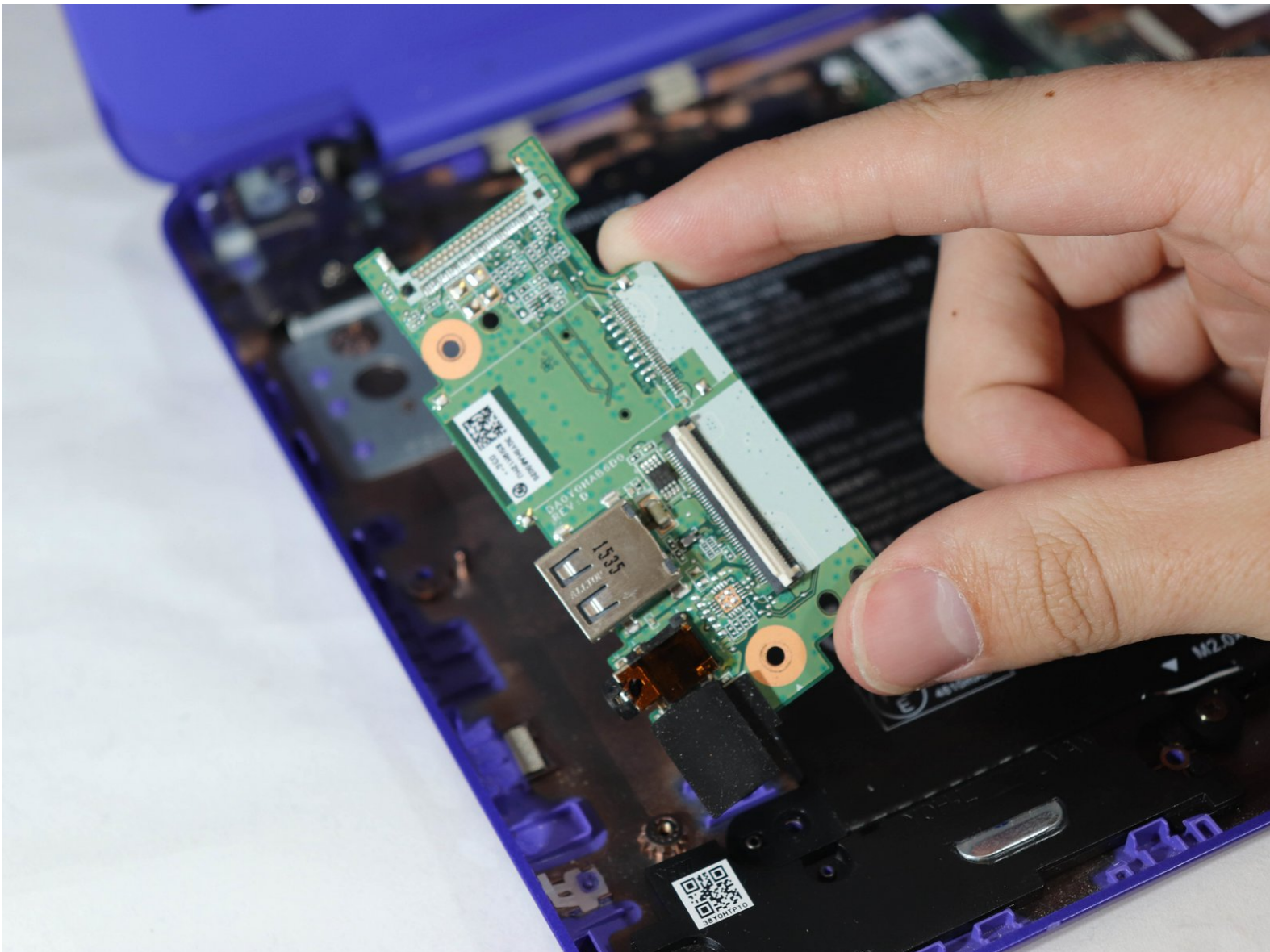




HP Stream 11-r020nr USB Port Replacement

Replace the USB Port of your HP Stream 11-r020nr in a few quick steps!

Written By: Victoria McGregor



INTRODUCTION

This guide will show the step by step process of disassembling the HP stream in order to remove and replace the USB port.



TOOLS:

- [iFixit Opening Tools](#) (1)
- [Metal Spudger](#) (1)
- [Spudger](#) (1)
- [Phillips #1 Screwdriver](#) (1)



PARTS:

- [HP Stream-r020nr USB Port](#) (1)

Step 1 — Keyboard Panel



- Turn off your HP Stream 11-r020nr by holding the power button down for 10 seconds.
- Turn the device top down so the rubber feet are facing up.
- Use a metal spudger to remove all the rubber feet off of the bottom of the device, including the small ones. There will be a total of 11 screws to remove.

Step 2



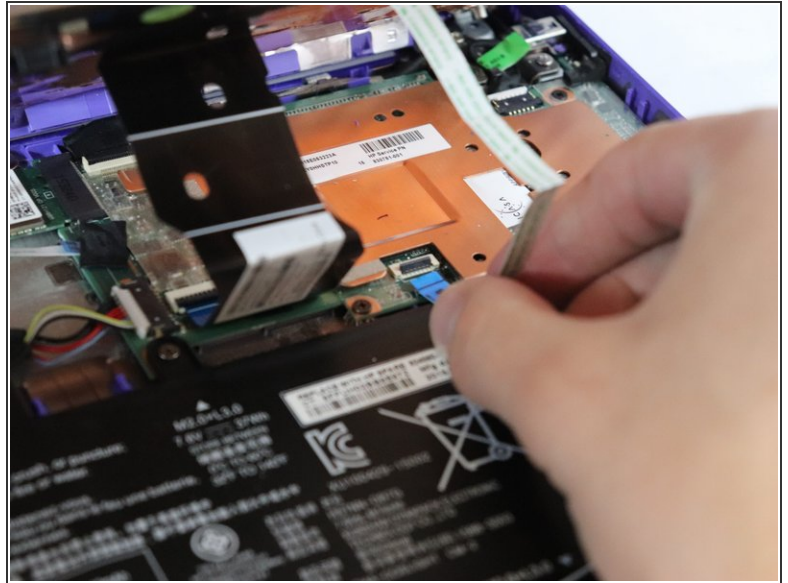
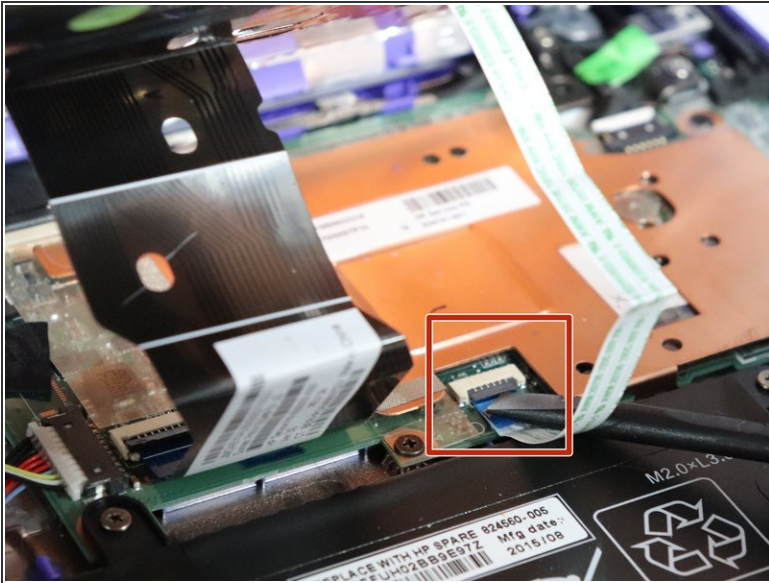
- Using the Phillips #1 screwdriver, remove all 11 of the the 5mm screws.

Step 3



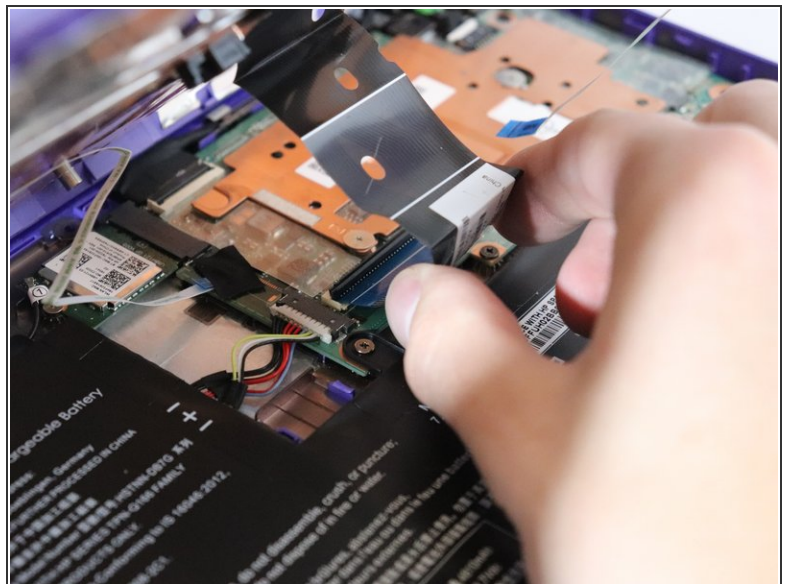
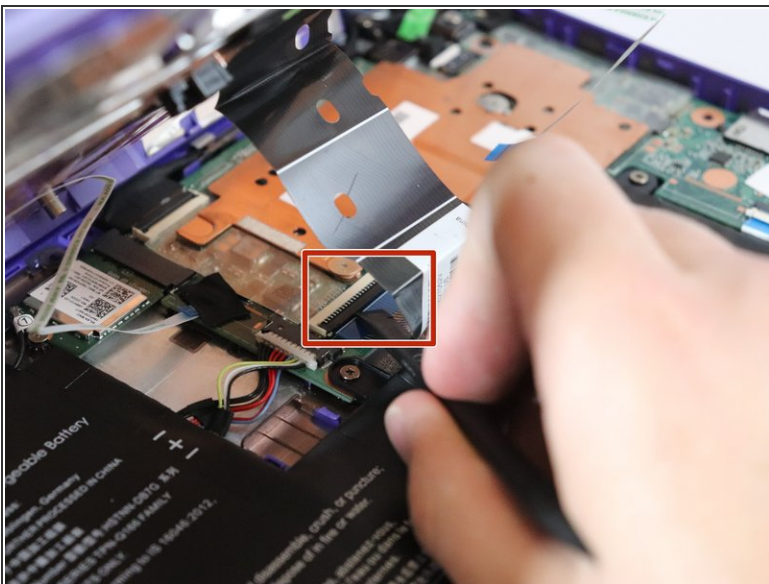
- Flip the laptop over and open the laptop.
- Using the blue plastic opening tool, separate the keyboard plate from the main body by prying up starting around the bottom corners, prying the bottom up first and the sides second all the way around the whole keyboard plate.
- ⓘ Be gentle when lifting the keyboard up as there will be ribbon cables still attaching the keyboard to the base of the laptop.

Step 4



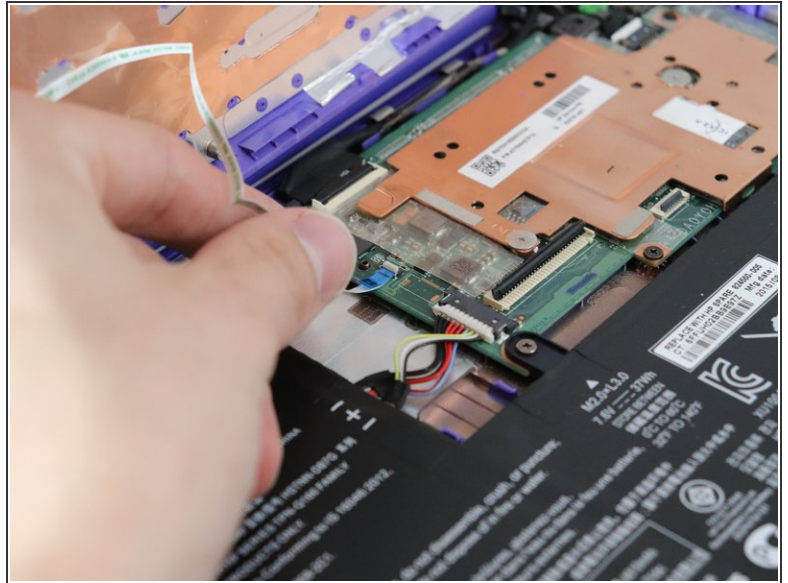
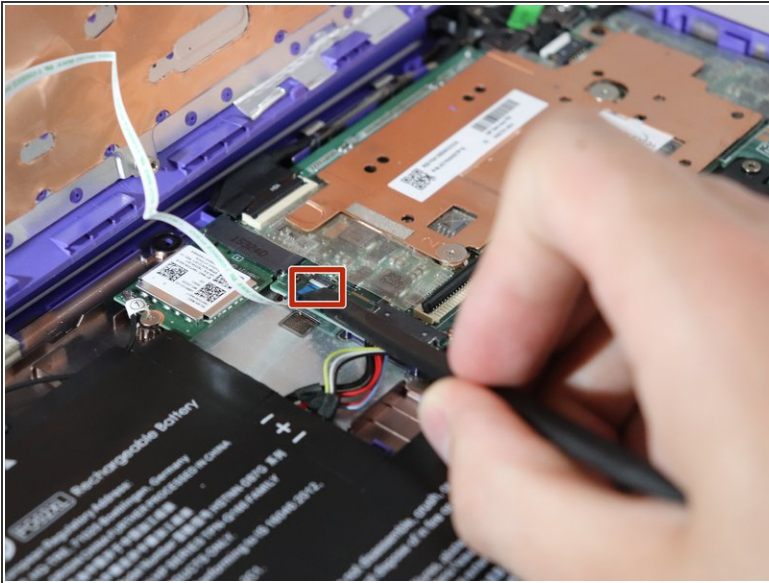
- Use the black nylon spudger to flip the black tab up that holds the ribbon cable in place.
- Lift the ribbon cable free.

Step 5



- Use the black nylon spudger to flip the black tab up that holds the large ribbon cable in place.
- Pull the ribbon cable free from the base of the keyboard.

Step 6



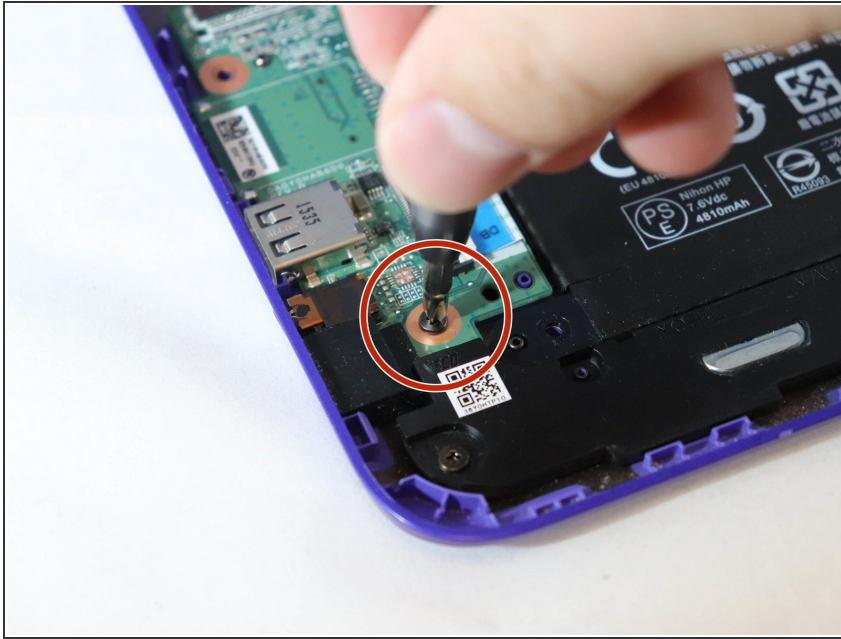
- Remove the tape covering the ribbon cable.
- Use the black nylon spudger to flip the black tab up that holds the ribbon cable in place.
- Pull the ribbon cable away from the base of the laptop.

Step 7



- After detaching the two large ribbon cables, carefully lean the keyboard against the screen.

Step 8 — USB Port



- Using the Phillips #1 screwdriver, remove the single 4mm screw.
- ⓘ The USB board is located in the bottom left corner.

Step 9



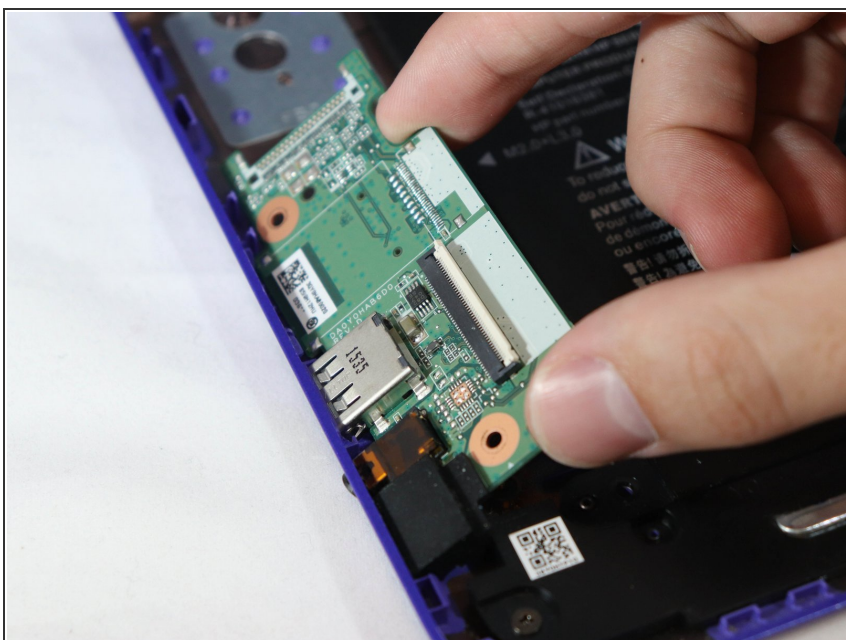
- Use the black nylon spudger to flip the tab up that holds the ribbon cable in place.

Step 10



- Gently pull out the ribbon cable with two fingers.

Step 11



- Lift the USB port out and remove it from the device.

To reassemble your device, follow these instructions in reverse order.