



# LG G Pad X 8.3 Battery Replacement

Replace the dead battery in your LG G Pad X 8.3 to restore power to the tablet.

Written By: Roxanne McPeck



---

## INTRODUCTION

If your LG G Pad X 8.3 just won't power on no matter what you try, it's time to replace the dead battery. This guide will show you how to efficiently and safely remove the battery from your tablet.

---



### TOOLS:

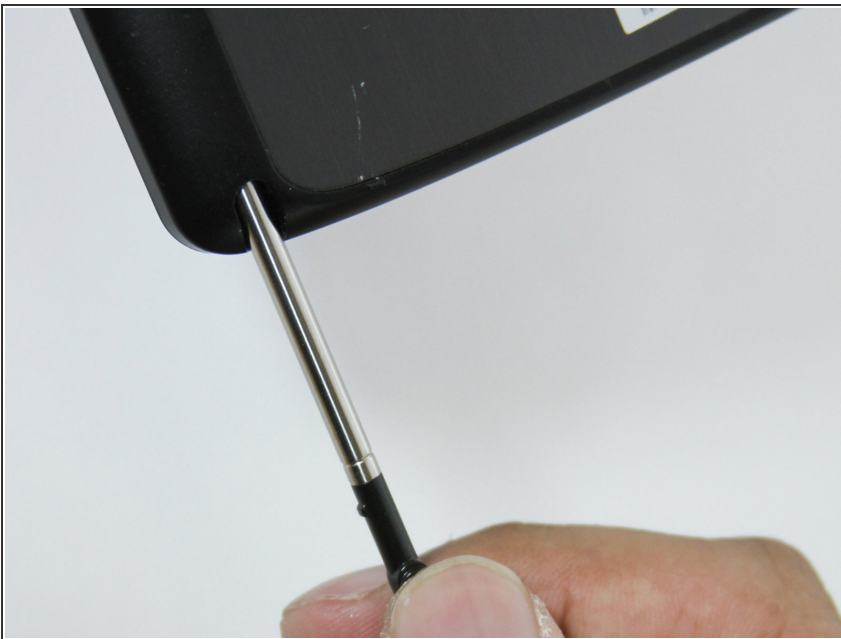
- [iFixit Opening Tools](#) (2)
  - [Phillips #000 Screwdriver](#) (1)
  - [Magnetic Project Mat](#) (1)
-

## Step 1 — Battery



- Remove the cover of the SD card. Find it on the right side of the back of the tablet.
- Press the SD card in to make it pop out.

## Step 2



- Slide the stylus out from the bottom left corner of the back panel.

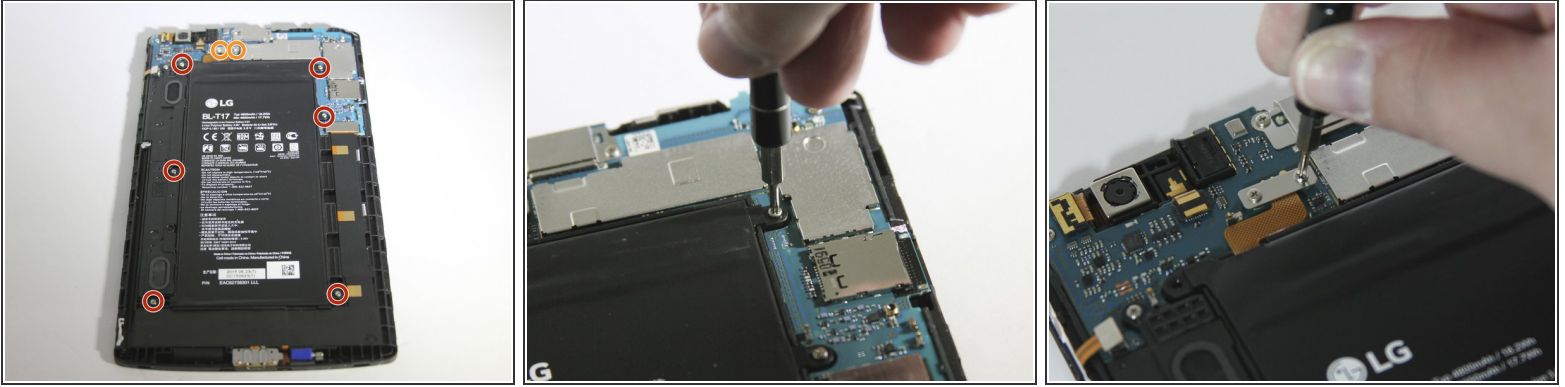
## Step 3



- Start at a corner and pry the screen up with a plastic opening tool.
  - ⓘ You can also use a plastic spudger for this task, but do not use metal tools. They can be dangerous to you and the device.
  - Slide the tool in the seam at the edge of the screen.
  - Wedge additional plastic opening tools in the seam to help lift the screen.
  - Slide both wedged plastic opening tools towards the bottom to pop the screen loose.
- ⚠ If your screen is cracked, work slowly to avoid flinging glass shards when prying.



## Step 4



- With a Phillips #000 screwdriver, unscrew the six 4.0 mm screws that hold down the battery.
- With the Phillips #000 screwdriver, unscrew the two 4.0 mm screws that hold down the battery ribbon connector.
- Use a magnetic mat to keep track of these tiny screws for later reassembly.

## Step 5



- Lift the battery ribbon connector with your finger.

## Step 6



- Lift the battery with your fingers and remove it from the device.

To reassemble your device, follow these instructions in reverse order.