



# Samsung Galaxy Sol Battery Replacement

In this guide, you will learn how to replace your battery.

Written By: Samantha Garcia Aguilera



## INTRODUCTION

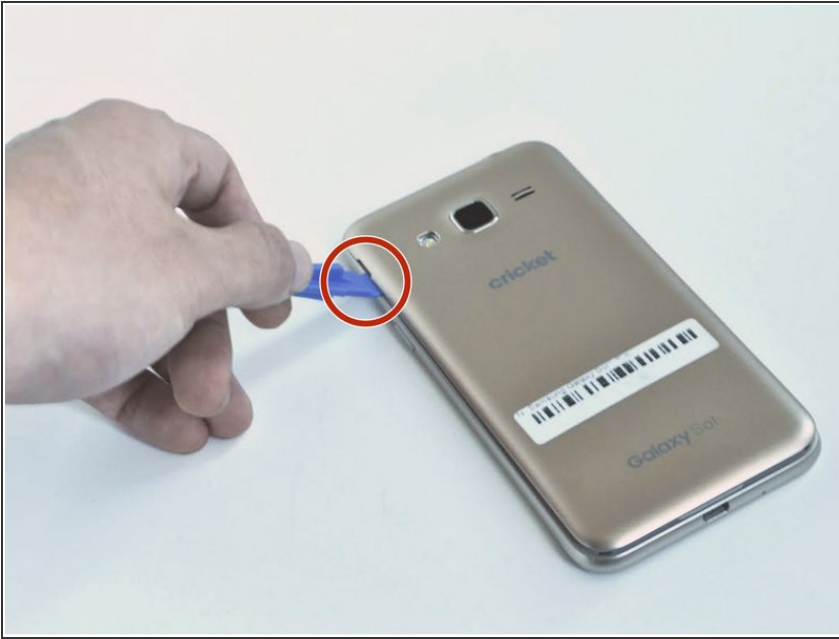
For the Cricket Samsung Galaxy Sol, the battery needed is a Samsung battery that is a 3.8V (voltage), 2100mAh (capacity), and made out of Lithium Ion. Some of the reasons that you would need to replace the battery would be an overheated battery or a faulty battery which could be a manufacturing error. When replacing the battery, it's important to use the proper tools, otherwise you could damage the phone. One tool that could be helpful is a plastic spudger to lift the battery and the phone back case.



### TOOLS:

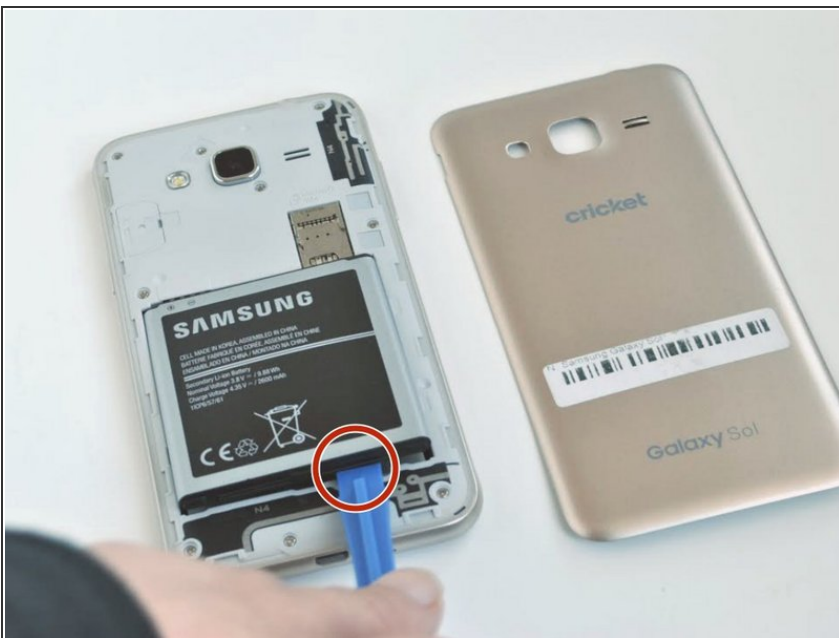
- [iFixit Opening Tools](#) (1)
-

## Step 1 — Battery



- Remove the back case of the phone by using an opening tool or fingernail to lift the divot on the top left side.

## Step 2



- Remove the battery by lifting from the bottom up with an opening tool or a small flat tool such as a credit card.

To reassemble your device, follow these instructions in reverse order.