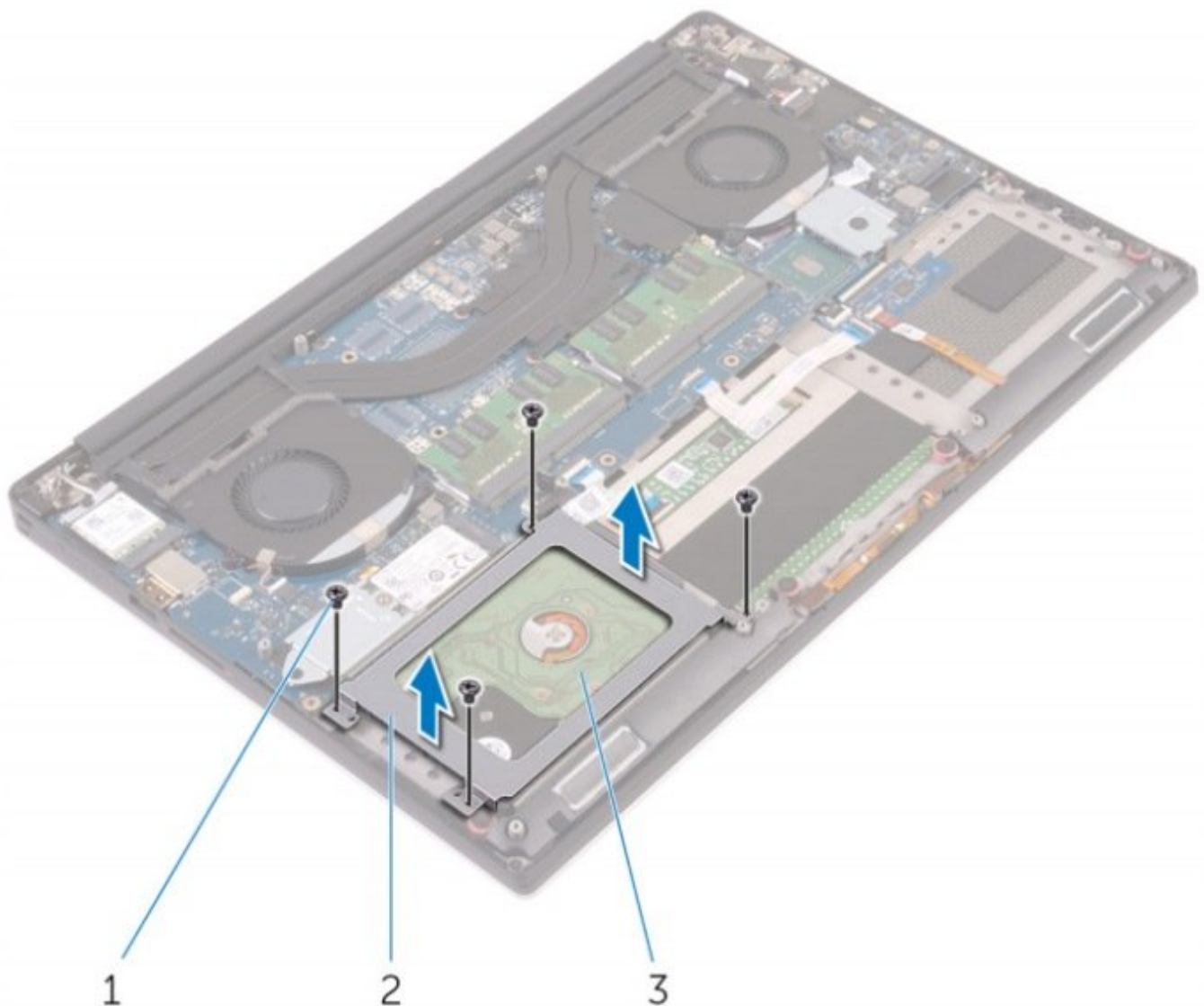




# Dell Precision 5520 Hard Drive Replacement

Written By: Johnathan Hammond





## TOOLS:

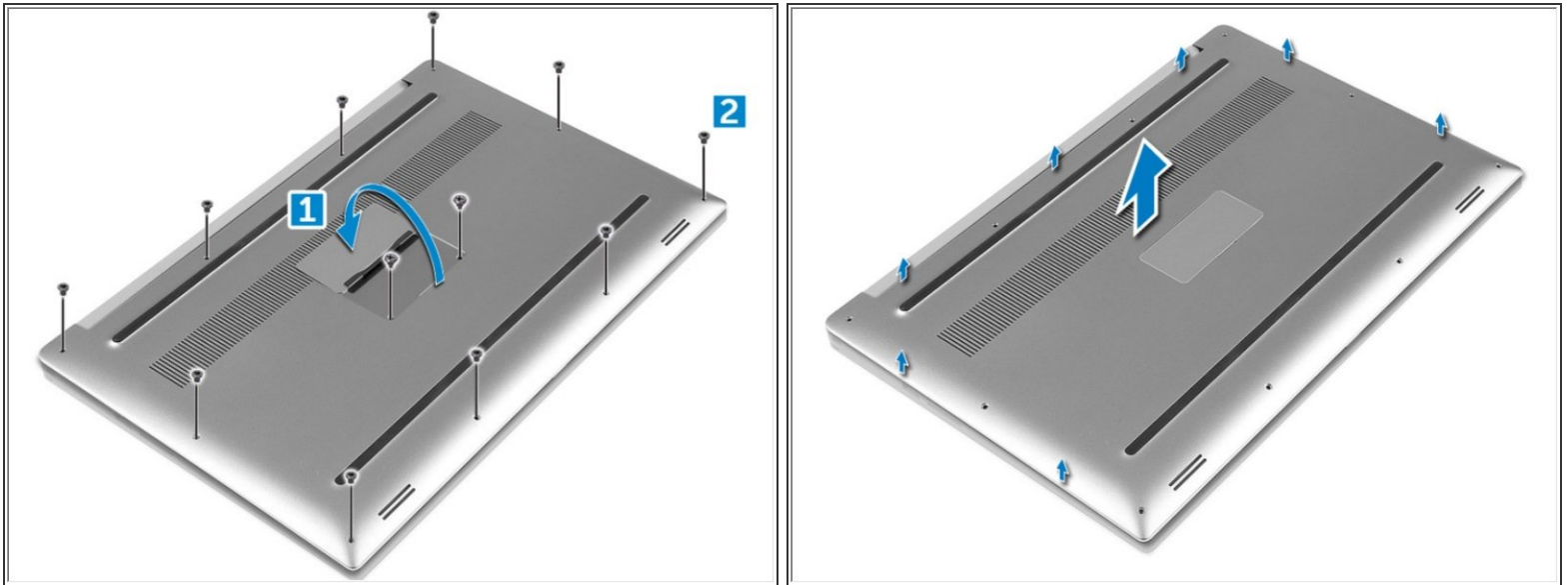
- [T5 Torx Screwdriver](#) (1)
- [Phillips #0 Screwdriver](#) (1)



## PARTS:

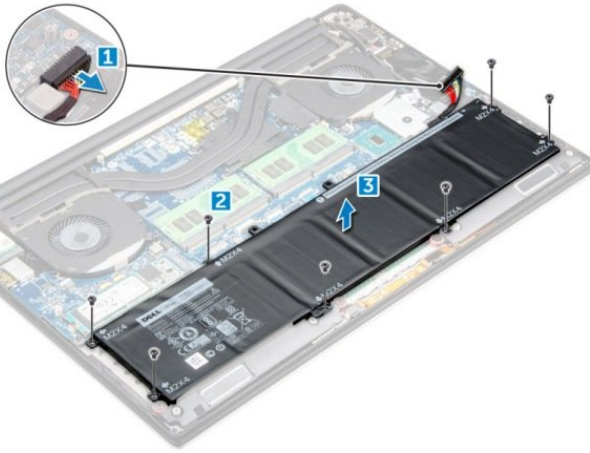
- [250 GB SSD](#) (1)
- [500 GB SSD](#) (1)
- [1 TB SSD](#) (1)
- [2 TB SSD](#) (1)

## Step 1 — Base Cover



- i** Be sure to power off and unplug your device before you begin your repair.
- Turn the system badge flap over (1) and then remove the ten M2x3 screws that secure the base cover to the computer (2).
  - Pry the edges of the base cover and lift it to remove it from the computer.
- i** NOTE: Use a Torx #5 screwdriver for the base screws and a Phillips screwdriver for the two M2x8 screws inside the badge flap.

## Step 2 — Battery



- Disconnect the battery cable from the system board [1].
- Remove the seven M2x4 screws that secure the battery to the computer [2].
- Lift the battery off the computer [3].

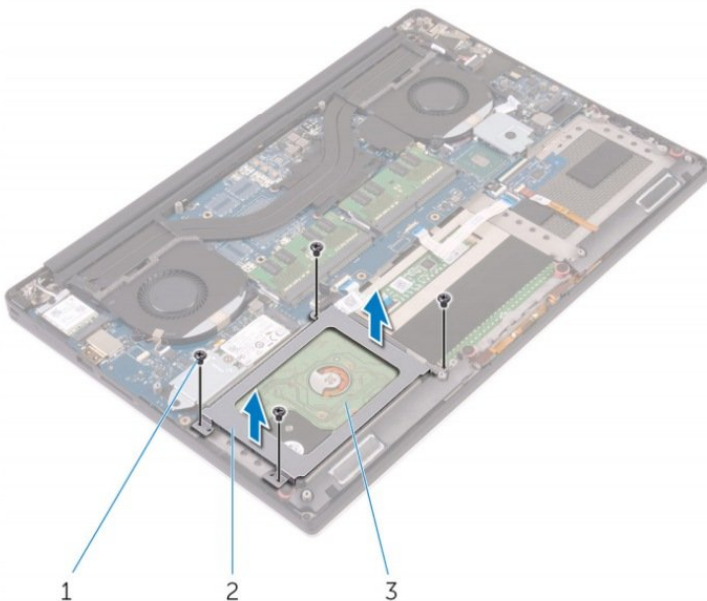
⚠ Do not apply pressure to the surface of the battery

⚠ Do not bend

⚠ Do not use tools of any kind to pry on or against the battery

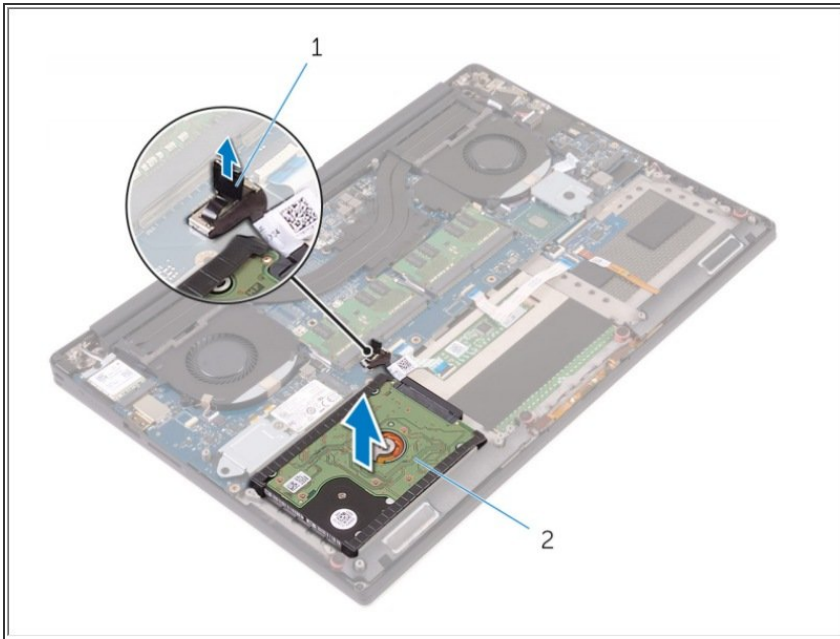
ⓘ If a battery cannot be removed within the constraints above, please contact Dell technical support

## Step 3 — Hard Drive



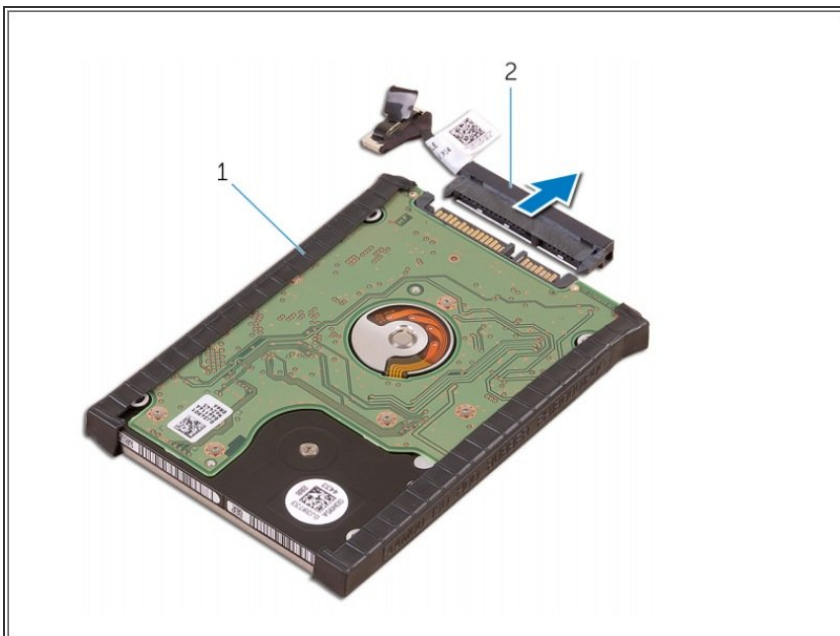
- Remove the four M2x4 screws securing the hard-drive bracket to the computer [1].
- Lift the hard-drive cage [2] off the hard drive assembly [3].

## Step 4



- Disconnect the hard-drive cable from the system board [1].
- Lift the hard drive off the palm rest assembly [2].

## Step 5



- Disconnect the hard drive interposer from the hard drive assembly and then remove the hard drive covers away from the hard drive.

To reassemble your device, follow these instructions in reverse order.