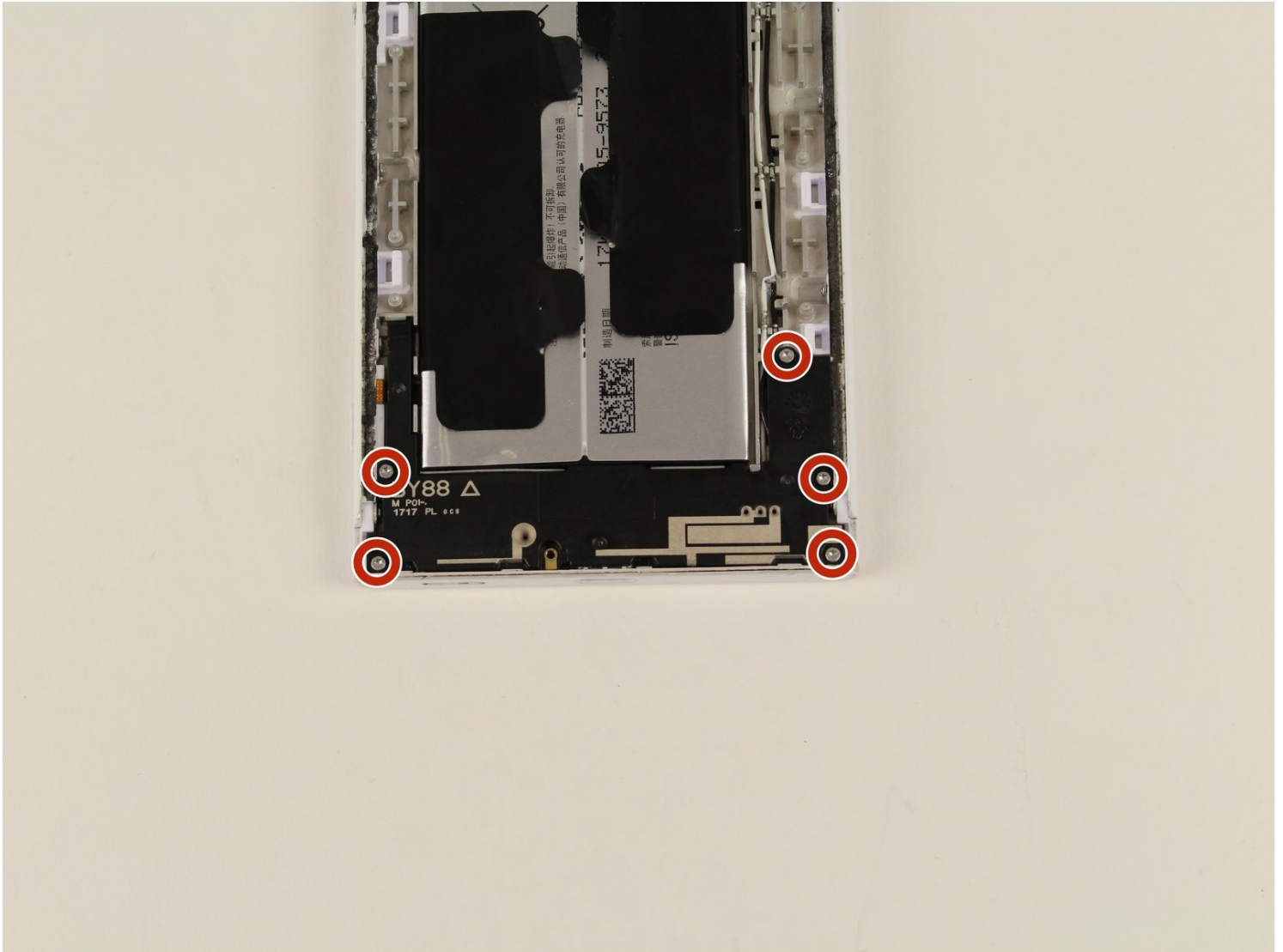




Sony Xperia XA1 Ultra Loudspeaker Replacement

This guide will show you how to remove the...

Written By: Jacob Jung



INTRODUCTION

This guide will show you how to remove the loudspeaker from your Sony Xperia XA1 Ultra. The loudspeaker needs to be replaced if sound is no longer emitted from your phone. A heat gun or hairdryer is needed to open the back panel, which can become hot and potentially damage the phone. In addition, a T5 screwdriver is needed to remove screws, and a spudger is used to lift and remove components of the phone.

TOOLS:

Heat Gun (1)

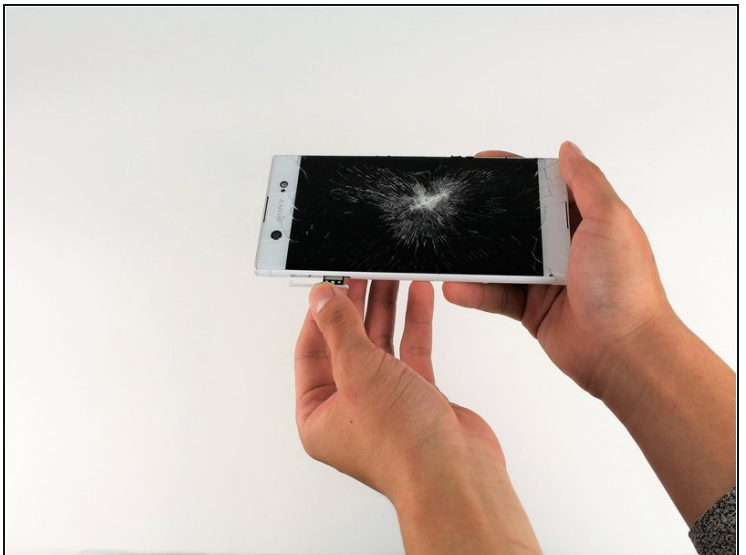
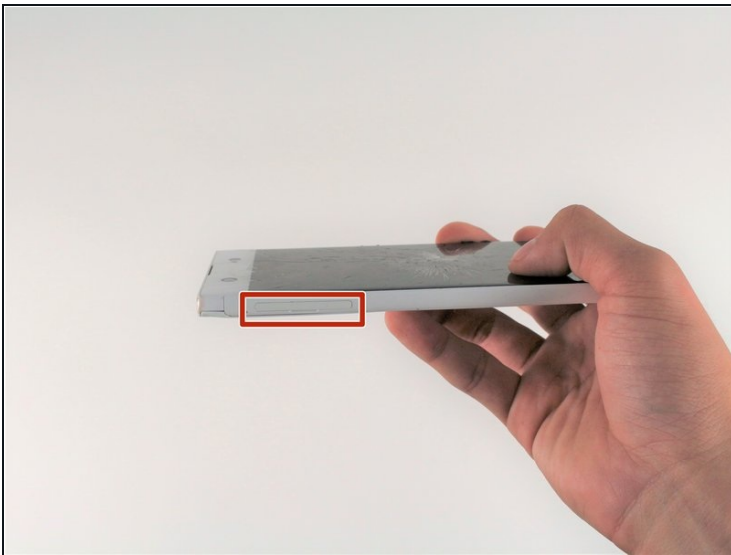
iFixit Opening Tool (1)

Plastic Cards (1)

Suction Handle (1)

T5 Torx Screwdriver (1)

Step 1 — Back Assembly



- Wedge your finger under the bottom ridge of the SD card insert.
- Pull outwards with your fingers to remove the SD card from the left side of device.

Step 2



- Use a hair dryer to heat each corner of the phone.
- Alternate heating each corner for a minute to loosen the adhesive binding the back cover to the phone.

⚠ Don't heat one area for too long; the phone may get damaged from overheating.

Step 3



- Press a suction cup on a heated corner of the device.
 - Hold the phone down and gently lift the suction cup to create a small gap.
- ⓘ You may hear crunching or popping sounds when you lift up the back cover.

Step 4



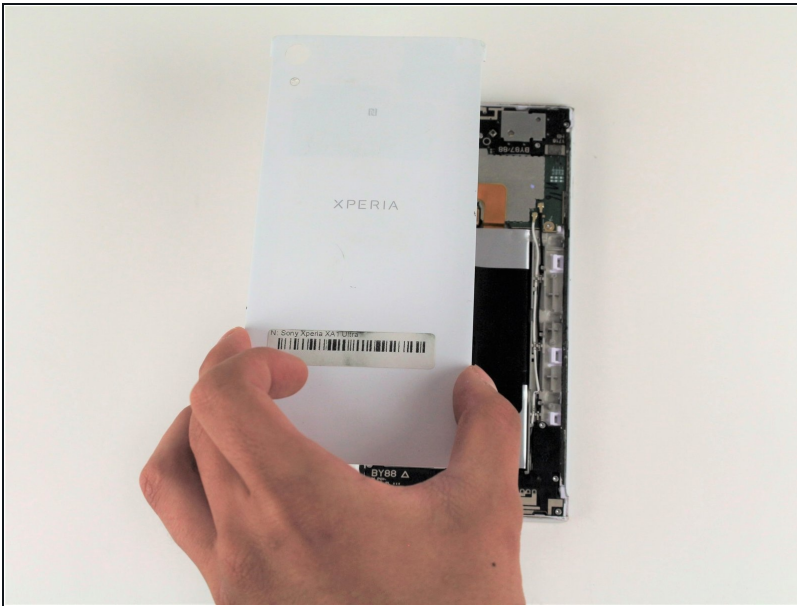
- Insert your iFixit Opening Tool in the small gap between your phone and the back cover.
- Lift up on the iFixit Opening Tool and insert your [plastic card](#) in the small gap between your phone and the back cover.

Step 5



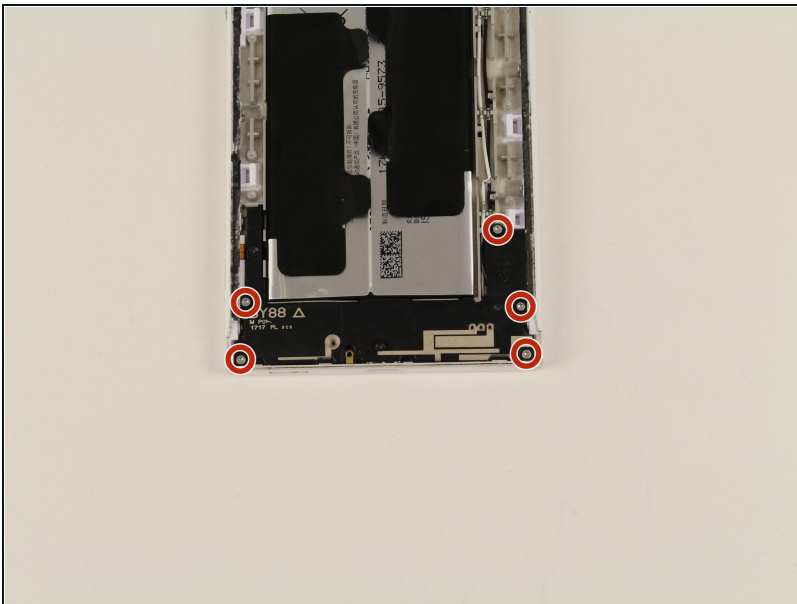
- Slide your plastic card along the side of your phone to loosen the adhesive.
- Move the card along the sides of the phone to lift all of the corners.

Step 6



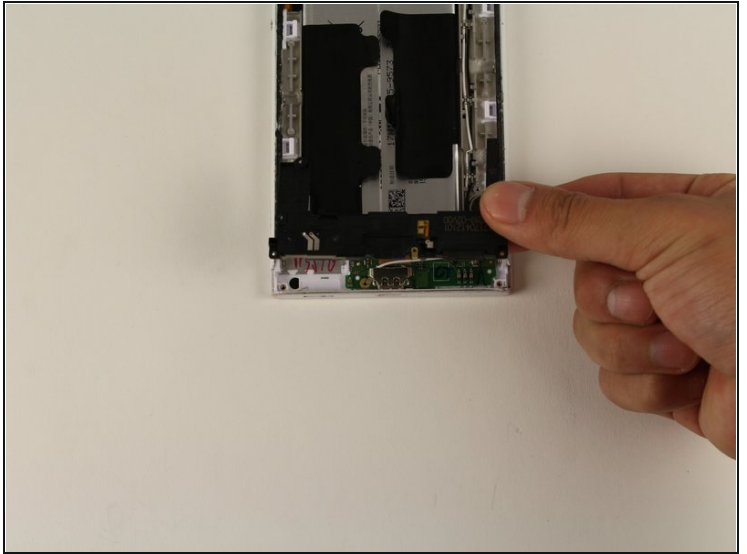
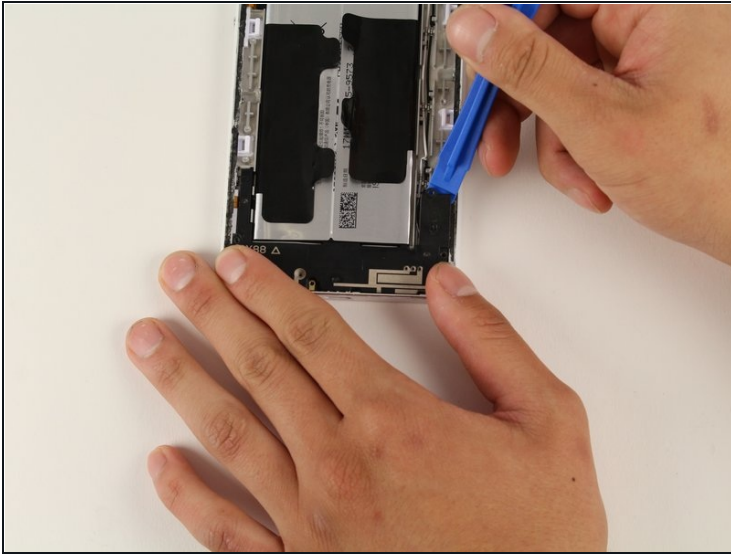
- Lift up the back cover by lifting up the sides of the phone with your hand.
- ☑ Apply a new strip of adhesive for reassembly.

Step 7 — Loudspeaker



- Remove the five 4mm T5 screws connecting the speaker to your phone.

Step 8



- Insert your iFixit Opening Tool underneath the speaker and gently lift up.
 - Once the speaker is slightly lifted, use your hands to remove the piece from the device.
-

To reassemble your device, follow these instructions in reverse order.