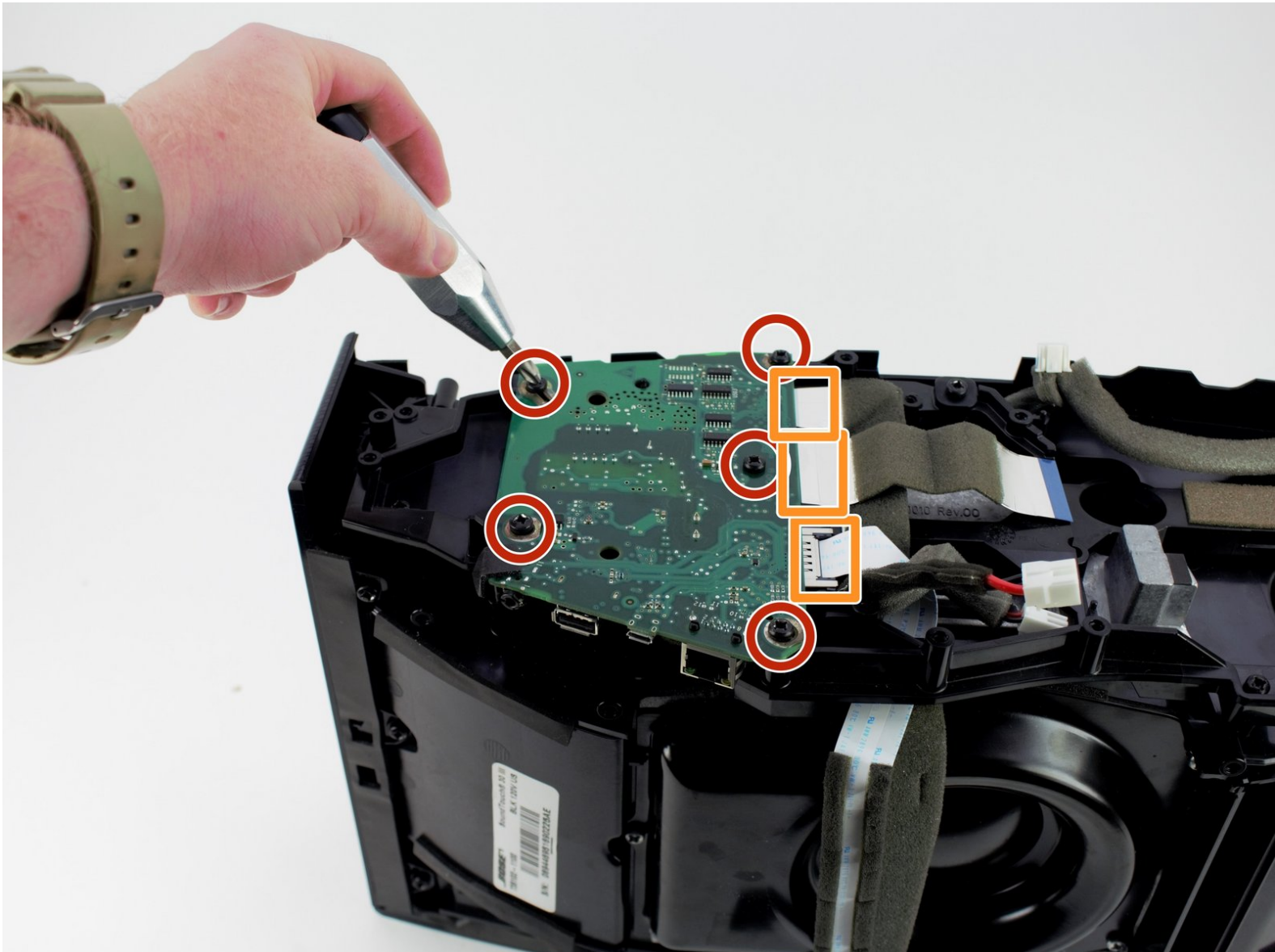




BOSE SoundTouch 30 Motherboard Replacement

How to replace the BOSE SoundTouch 30 motherboard.

Written By: Brennen Irey



INTRODUCTION

This guide will show the steps required to remove the motherboard from the device.



TOOLS:

- [Phillips #2 Screwdriver](#) (1)
-

Step 1 — Base Plate



- Remove the four 15.5 mm PH2 screws securing the base plate to the device.

Step 2 — Power Supply



- Remove the six 15.5mm PH2 screws securing the grille and rear panel to the device.

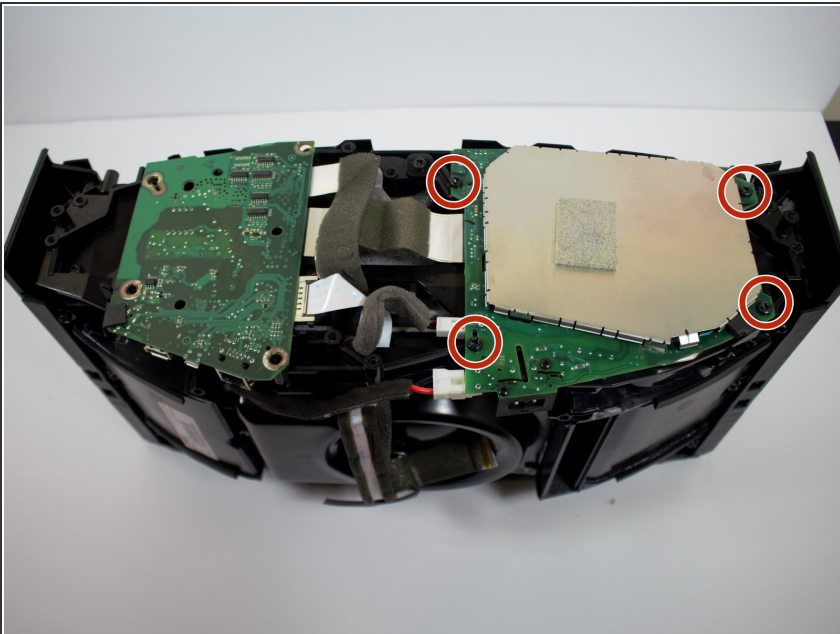
Step 3



- Remove the grille and rear panel by grabbing the corners and pulling upwards and outwards.

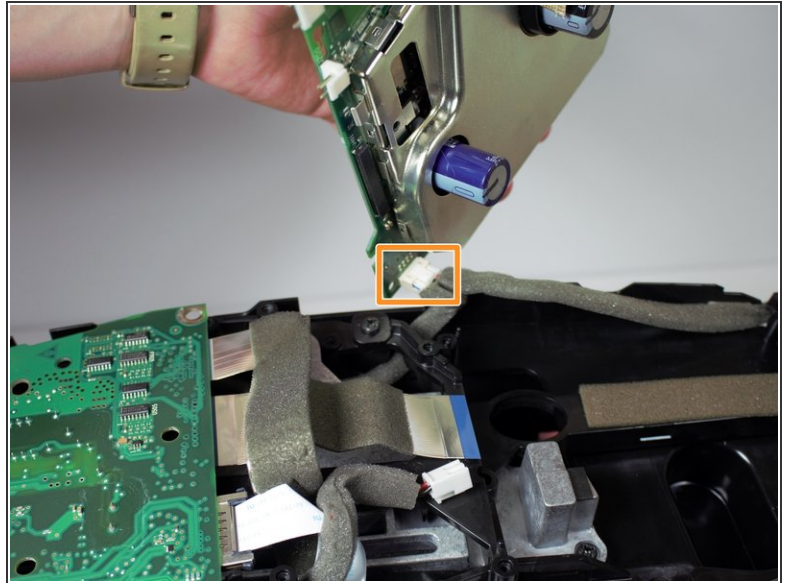
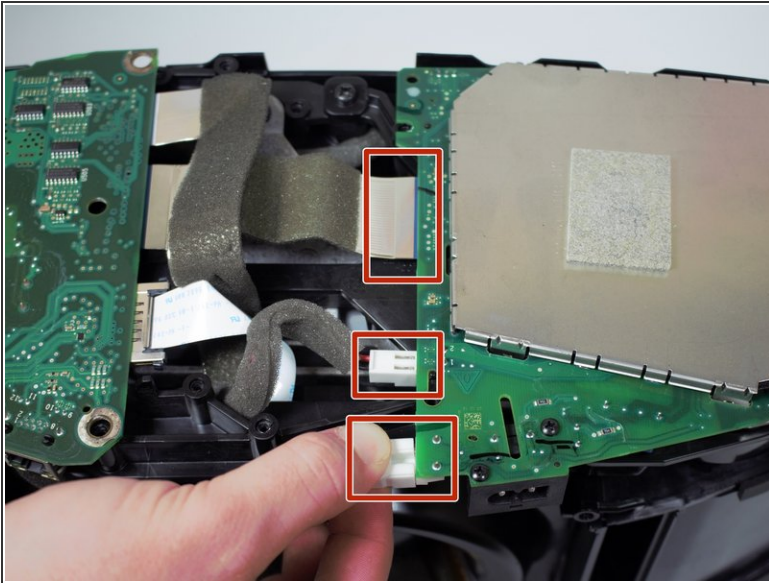
⚠ There is a small ribbon cable that connects the display assembly to the body of the device. Make sure to disconnect the cable before pulling the grille all the way off or else the cable could snap.

Step 4



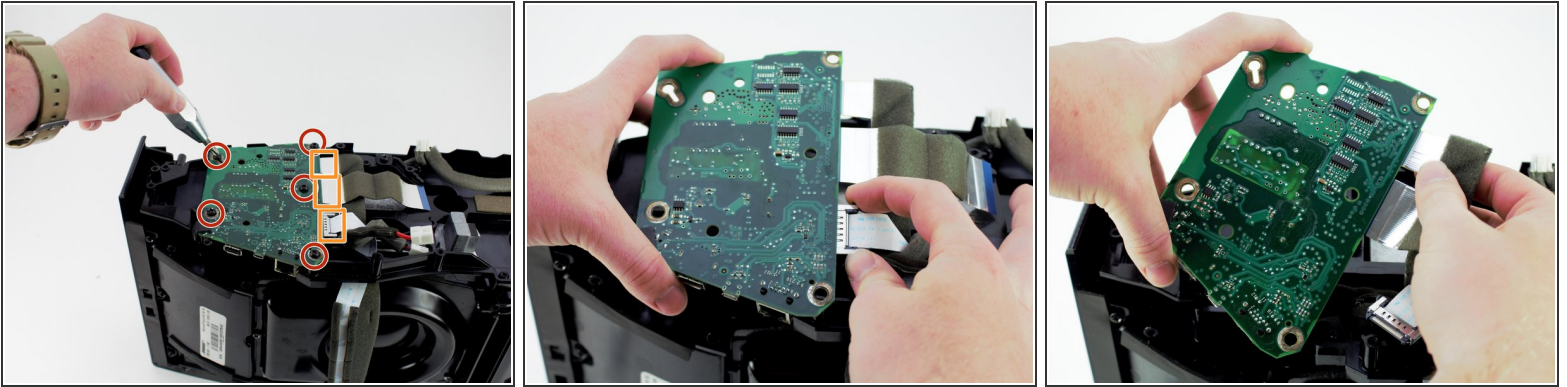
- Remove all four 15.5 mm PH2 screws holding the power supply down.
- ⓘ The power supply is identified by a green board with a large metal covering.

Step 5



- Disconnect the three cables from the power supply by squeezing the white tabs if present and gently pulling.
- Pick up the power supply and remove the fourth cable from the underside of the power supply.
- Remove the power supply.

Step 6 — Motherboard



- Remove the five 15.5 mm PH2 screws holding the motherboard down.
 - Remove the three cables from the side of the motherboard by squeezing the grey tabs if present and gently pulling.
 - Remove the motherboard.
- i** The motherboard is identified as the smaller green board with an ethernet, USB Type A, and an auxiliary port.

To reassemble your device, follow these instructions in reverse order.