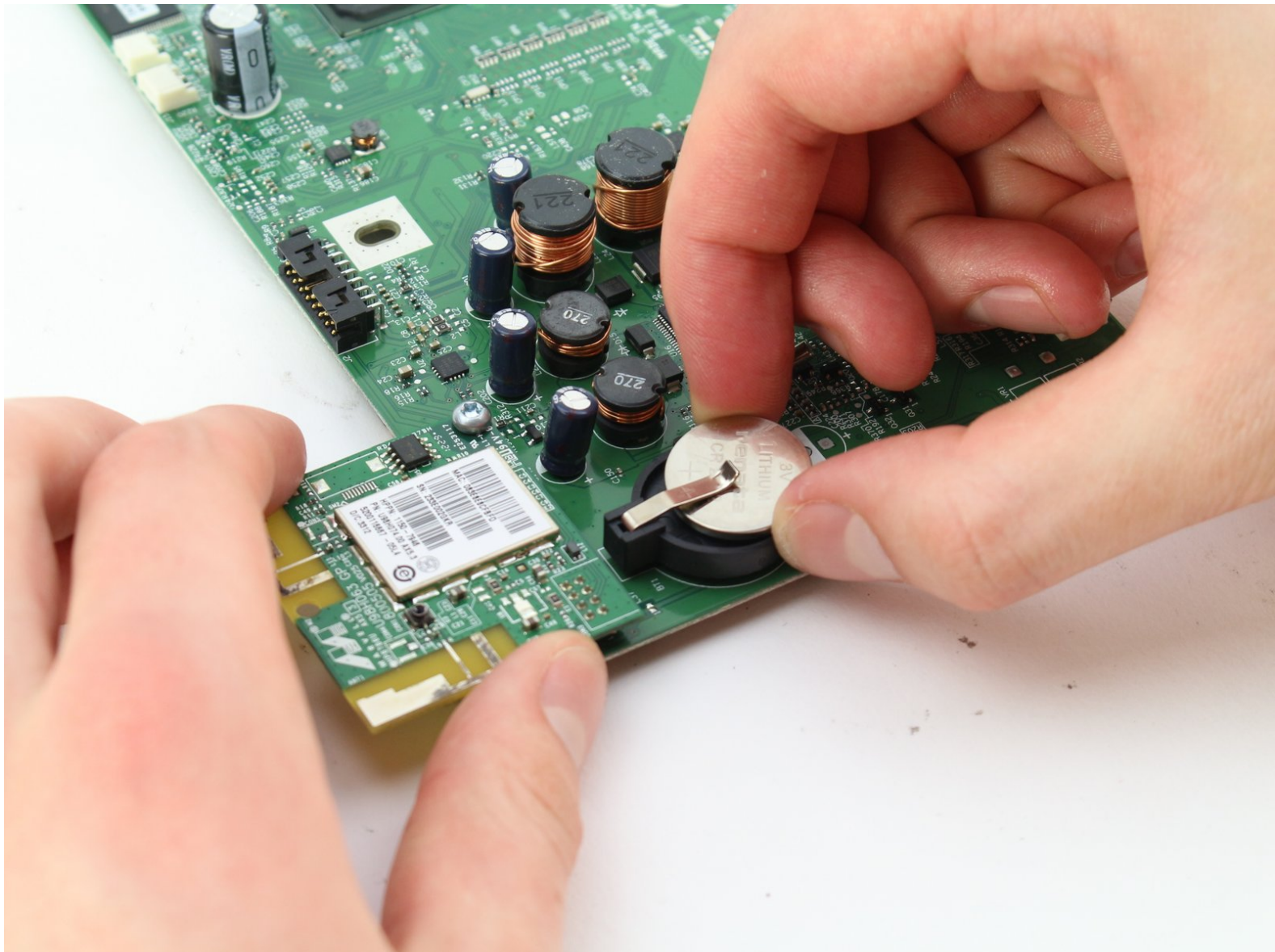




HP Officejet Pro 8600 Plus Battery Replacement

How to replace the HP Officejet Pro 8600 Plus battery.

Written By: Mackinnon Buck



INTRODUCTION

Sometimes the battery for the motherboard on the HP Officejet Pro 8600 Plus goes bad. This guide describes how to replace the battery located on the motherboard.



TOOLS:

- [iFixit Opening Tools](#) (2)
 - [T10 Torx Screwdriver](#) (1)
-

Step 1 — Motherboard



- Turn the printer so the back is facing you.
- Put the printer in a vertical position by lifting its right side.

Step 2



- Remove the two 12mm T10 Torx screws on the top edge of the printer.

Step 3



- Rotate the printer clockwise so the bottom of the printer is facing you.

Step 4



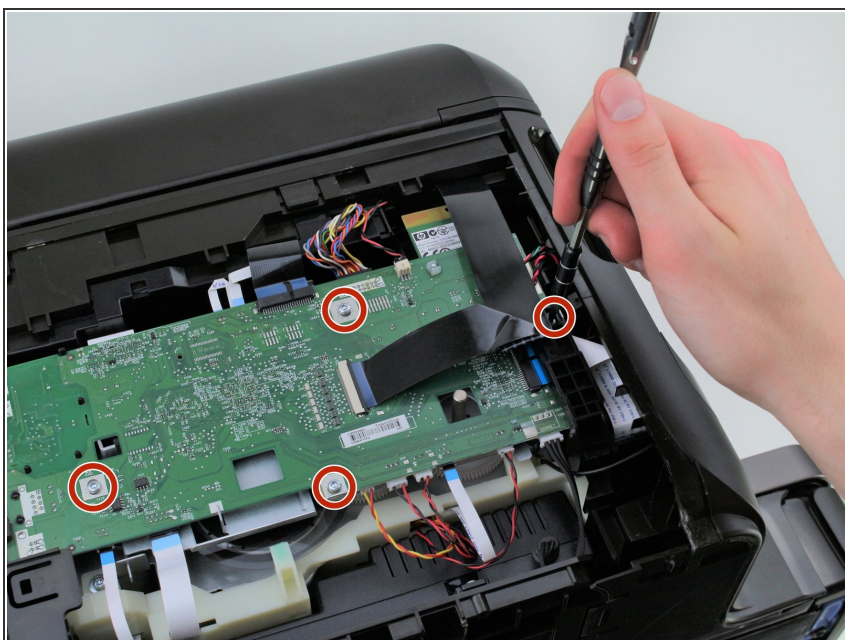
- Insert the plastic opening tool underneath the slot on the right that aligns with the edge of the back panel.
- Insert a second plastic opening tool in the notch lining up with the crease in the back panel.
- ⓘ This step requires applying a significant amount of force on the left notch. Don't be alarmed if you hear popping noises.

Step 5



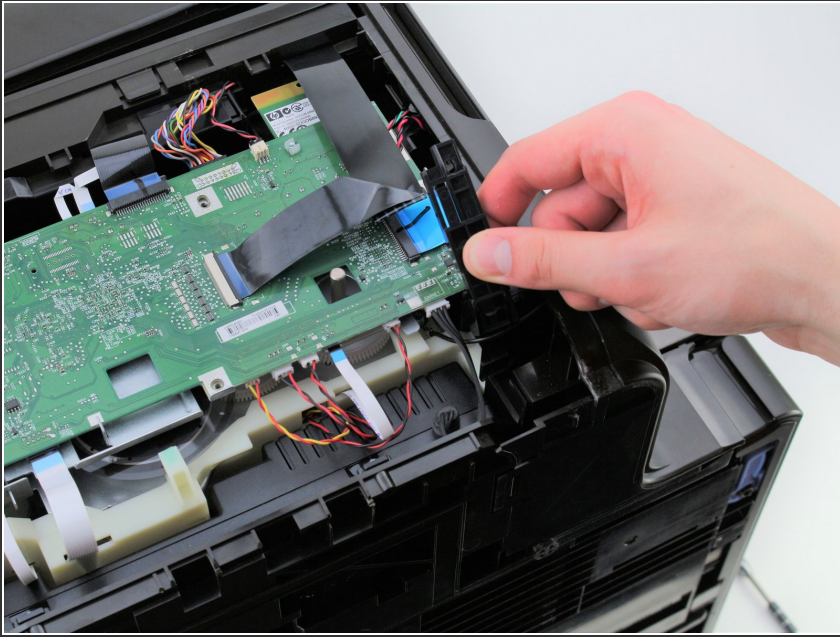
- Remove the side panel from the printer by lifting upwards toward you.
- ☑ For reassembly, slide the side panel from left to right into place.

Step 6



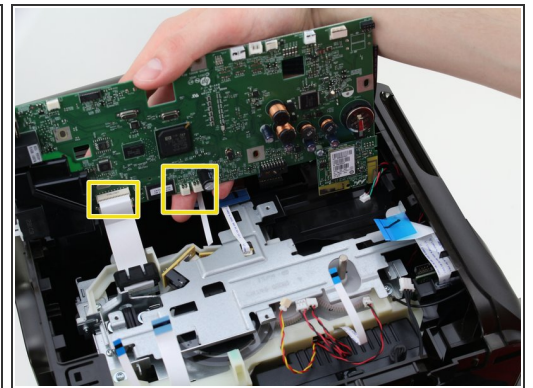
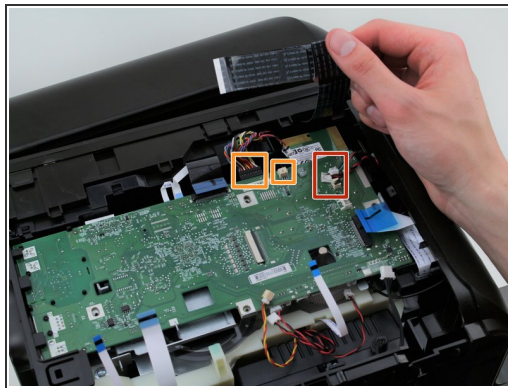
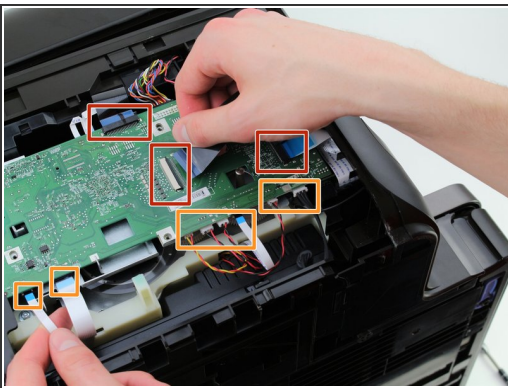
- Remove the four 6.5 mm T10 Torx screws from the motherboard.

Step 7



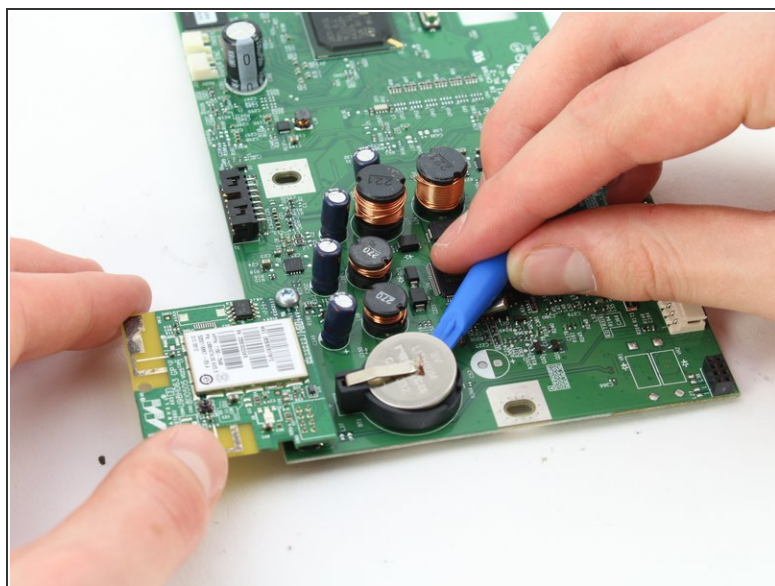
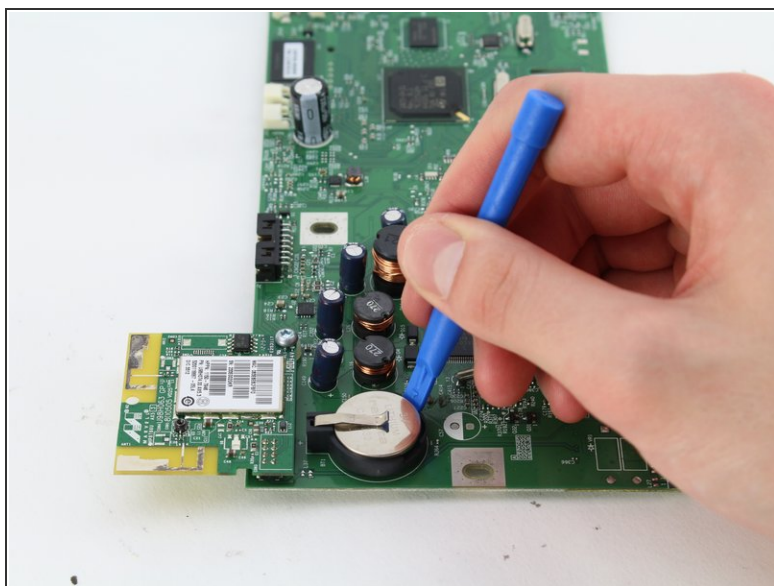
- Remove the black brace from the right side of the motherboard, located near the black ribbon cable.

Step 8



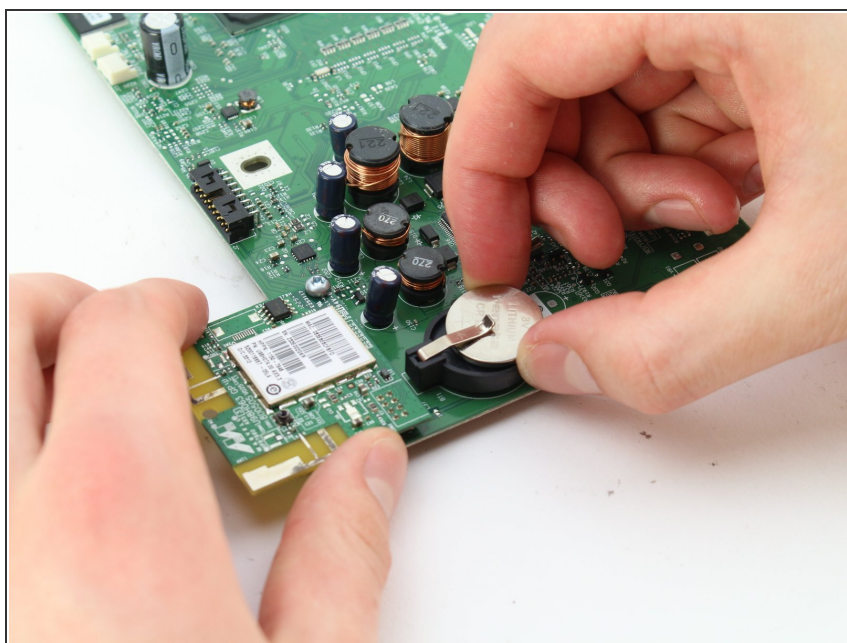
- Remove the cables connected to the top of the motherboard by gently pulling them out of their ports.
- Remove the cables connected to the edge of the motherboard by gently pulling them out of their ports.
- Remove the cables connected to the underside of the motherboard by gently pulling them out of their ports.

Step 9 — Battery



- Turn the motherboard over so the back is facing upward.
- Use the plastic opening tool to pry the battery out of place.

Step 10



- Remove the battery by grabbing its edges, lifting upward, and sliding sideways.

To reassemble your device, follow these instructions in reverse order.