



Written By: Andy Velazquez



Page 1 of 8

INTRODUCTION

Batteries are often the first components to wear out in electronic devices and as a result are a common problem. A dead battery can be frustrating, but fortunately replacing the battery on the HP Elite x2 1012 G2 is quick and easy.



TOOLS:

- [T5 Torx Screwdriver](#) (1)
- [Suction Handle](#) (1)
- [iFixit Opening Tool](#) (1)
- [Phillips #0 Screwdriver](#) (1)



PARTS:

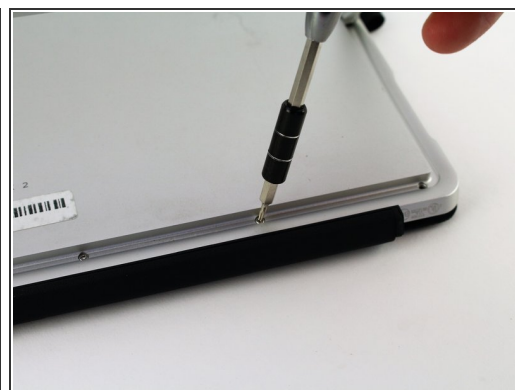
- [HP Compaq Elite X2 1012 Laptop Battery](#) (1)

Step 1 — Screen



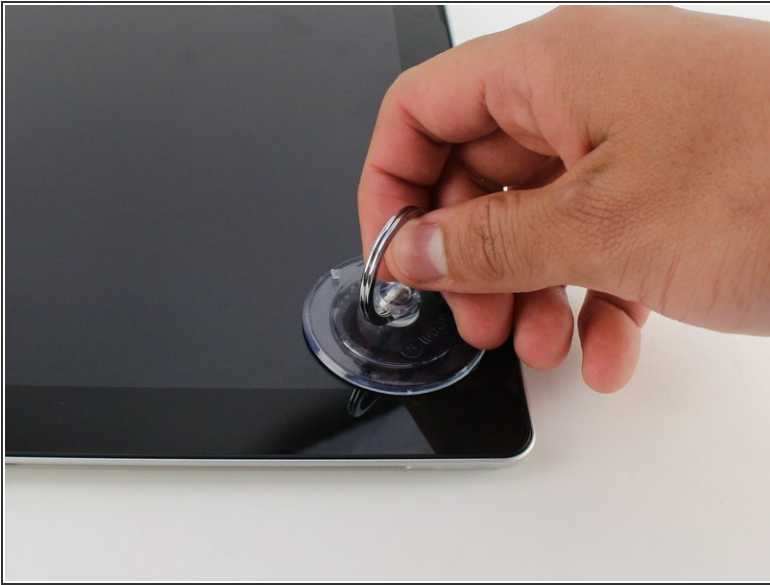
- ❗ Make sure the device is turned off before starting.
- Orient the device so the back is facing you, with the kickstand up.

Step 2



- Remove the six 3mm Torx T5 screws underneath the kickstand.

Step 3



- Turn the device over so the screen is facing you.
- Place a suction cup firmly onto a corner of the screen.
- Lift up gently until you see the screen separate from the casing.
- Repeat this process for all four corners.

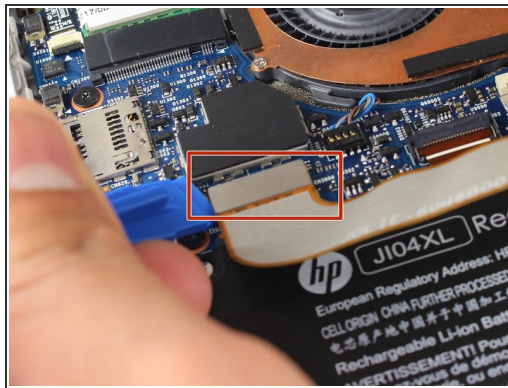
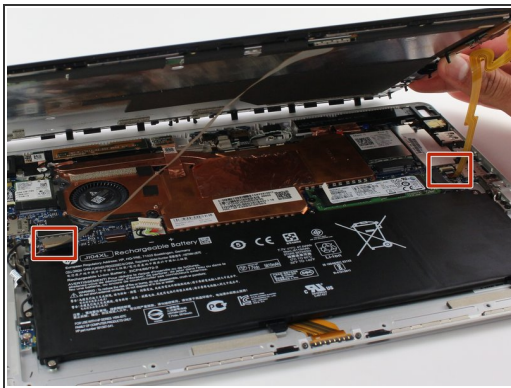
Step 4



- Lift the screen up and off of the device.

⚠ Pry each corner up first, otherwise you may damage or crack the screen.

Step 5



- Remove the two connectors on the back of the screen by lifting the connector tabs on the motherboard with a plastic opening tool and pulling gently.

Step 6



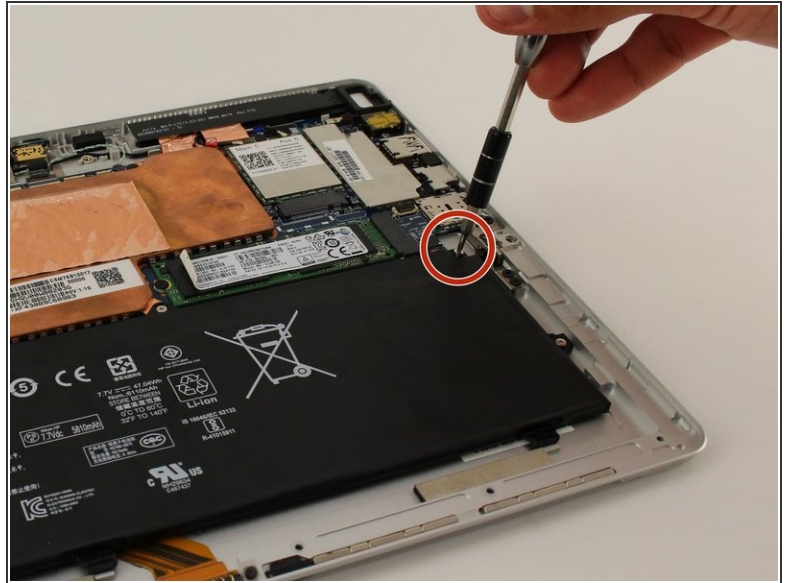
- Remove the screen by gently lifting it off of the device.

Step 7 — Battery



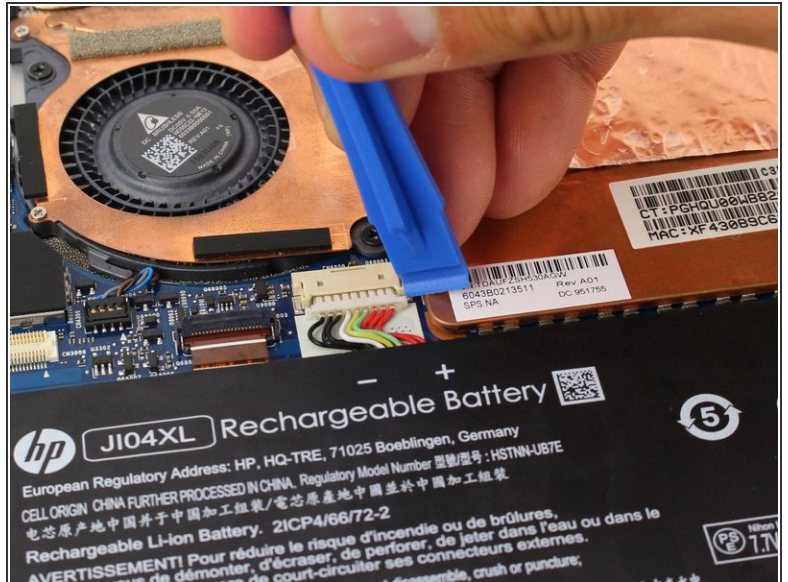
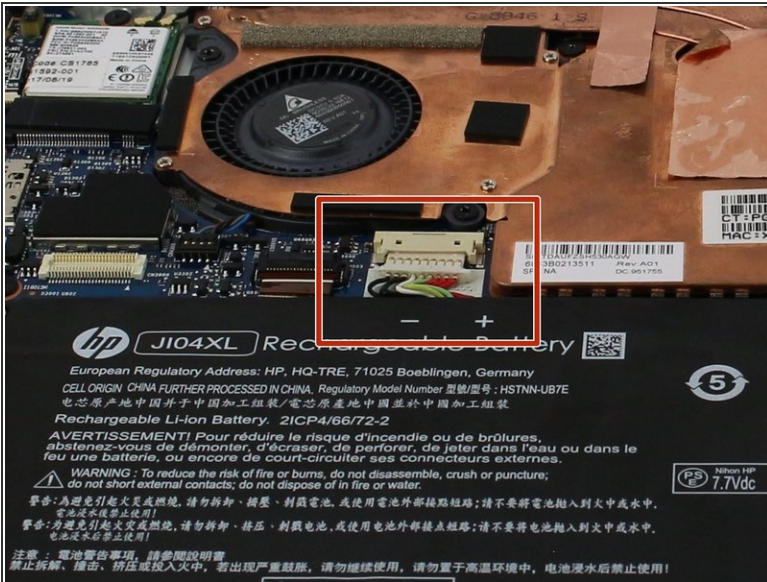
- Orient the device so that the battery is closest to you.
- ⓘ The battery is the large, black rectangle at the bottom of the device.

Step 8



- Remove all six Phillips 3 mm screws around the battery by rotating in the counterclockwise direction with a Phillips screwdriver.

Step 9



- Remove the battery's connector by pushing both sides of the tab towards yourself with a plastic opening tool.

Step 10



- Lift the battery out of the device.

To reassemble your device, follow these instructions in reverse order.