



Dell Inspiron 13z N311z Display Assembly Replacement

Written By: Terrence15



INTRODUCTION

In this guide, we will be showing you how to remove and replace the Display Assembly.



TOOLS:

- [Phillips #0 Screwdriver](#) (1)
-

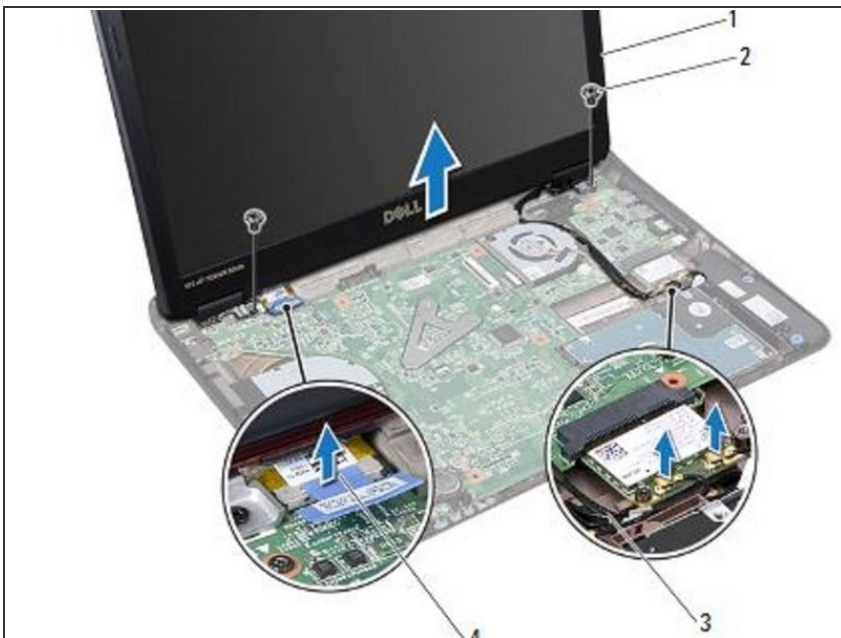
Step 1 — Remove the Screws



⚠ Follow the instructions in ["Before You Begin"](#).

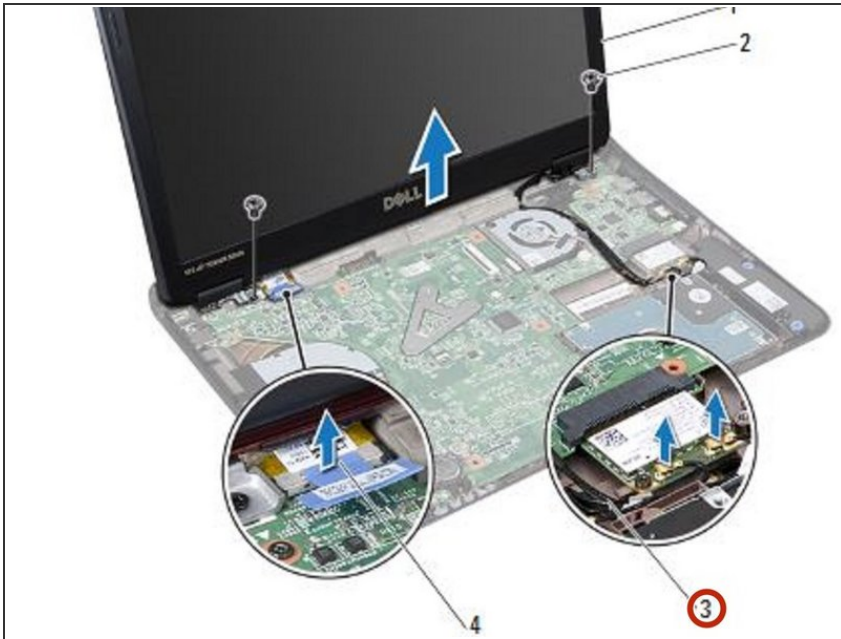
- Remove the two screws that secure the display panel to the chassis.

Step 2 — Open the Display



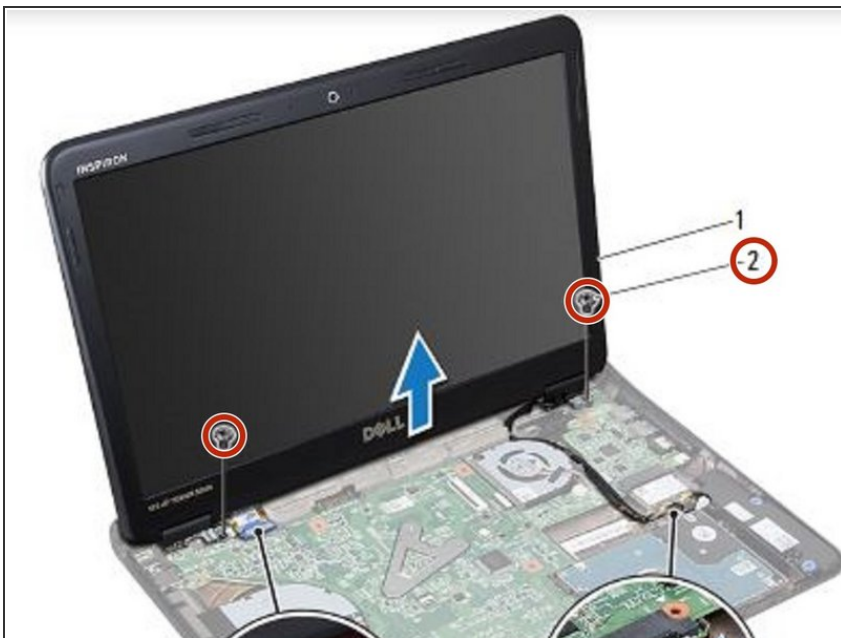
- Turn the computer over and open the display as far as possible.

Step 3 — Remove the Cables



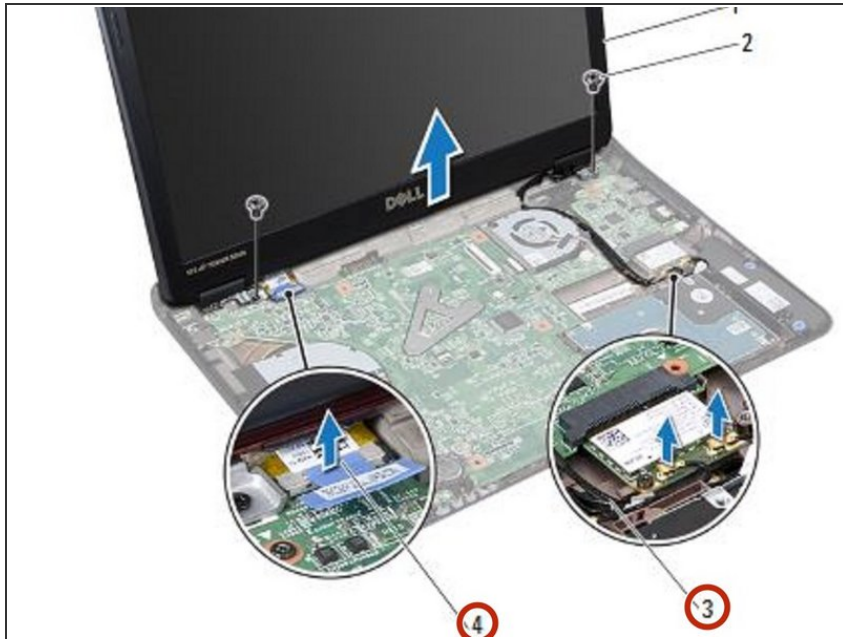
- Make a note of the routing of the Mini-Card antenna cables and the display cables. Remove the cables from the routing guides.

Step 4 — Remove the Screws



- Remove the two screws (one on each side) that secure the display assembly to the computer base.

Step 5 — Disconnect the Display Cable



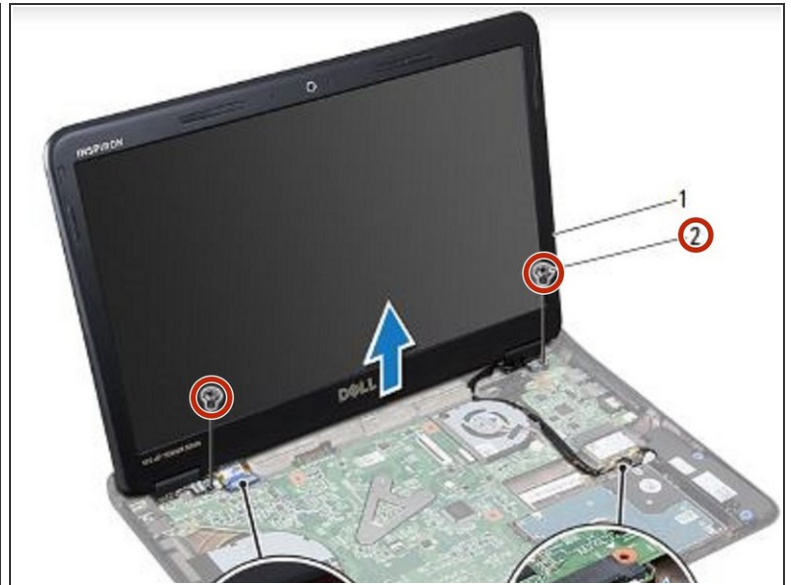
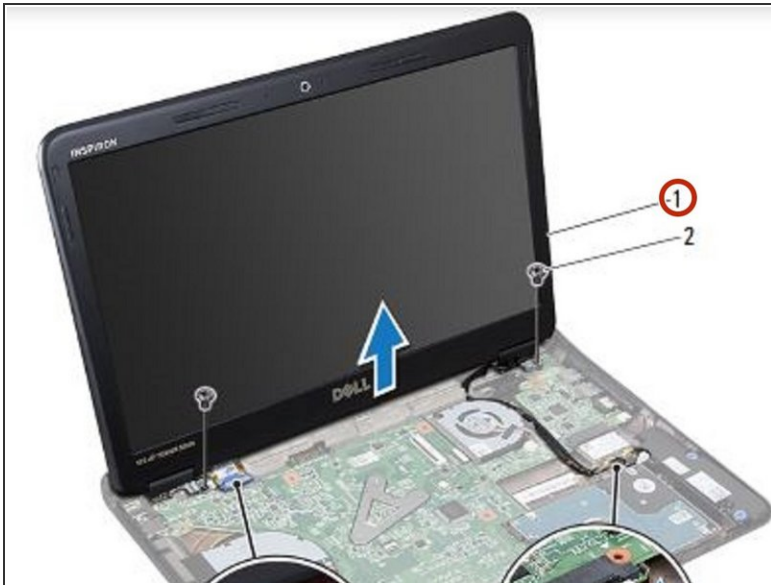
- Make a note of the cable routing and disconnect the display cable and the wireless card antenna cables from the connectors on the Mini-Card.

Step 6 — Removing the Display Assembly



- Lift and remove the display assembly off the computer base.

Step 7 — Replace the Screws



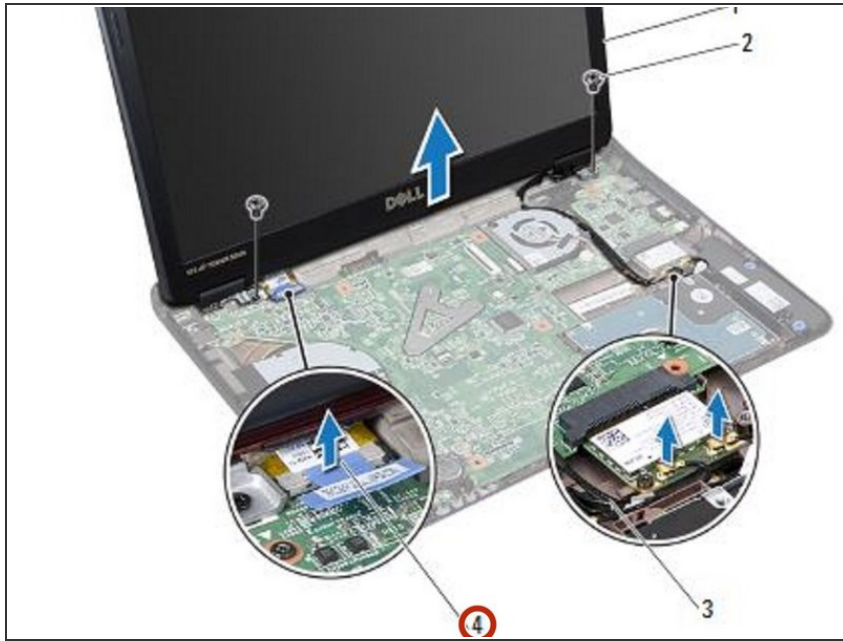
- Place the **NEW** display assembly in position and replace the two screws (one on each side) that secure the display assembly to the computer base.

Step 8 — Routing the Cables



- Route the Mini-Card antenna cables and the display cable through the slot on the computer base.

Step 9 — Connecting the Display Cable



- Connect the display cable to the connector on the system board.

To reassemble your device, follow these instructions in reverse order.