



Install firmware on Xbox One S

Guide created by KimJonglan With help by iFixit...

Written By: KimJonglan



INTRODUCTION

Guide created by KimJonglan

With help by iFixit users Andrew and MervDervis

This guide would not be possible without the script made by user tai1976 from gbatemp.net



TOOLS:

[iFixit Opening Tool](#) (1)

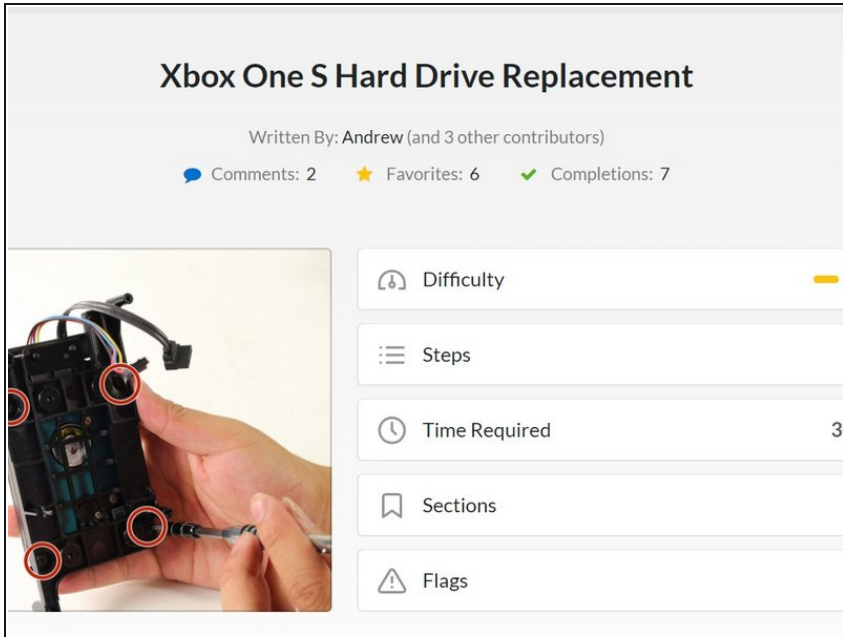
[TR10 Torx Security Screwdriver](#) (1)

Step 1 — Warning



- Before doing any updates or software changes with the Hard Drive connected to the motherboard, make sure that all connections to the board are secure, such as the disc drive, otherwise you will brick the Motherboard, and will require a new one.

Step 2 — Prerequisites



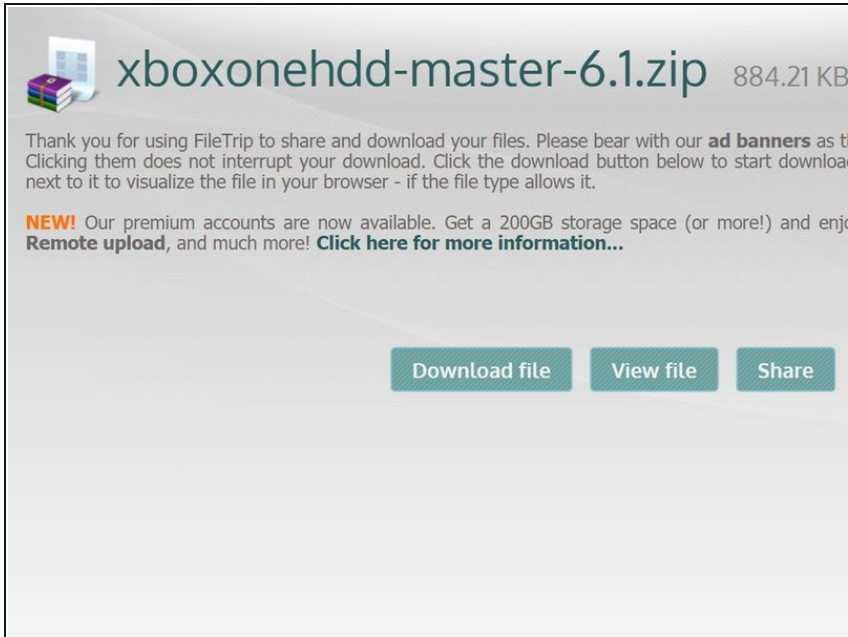
- Before beginning this guide, it is best to read through the steps for the hardware portion, as shown by iFixit user Andrew, at the following link.
- [Xbox One S Hard Drive Replacement](#)
- You will also need a PC running Windows, and a hard drive reader (Sata Data and Sata Power to USB)
- ❗ Seagate drives have been known to cause issues with Xbox One software.

Step 3 — Connect Your New HDD



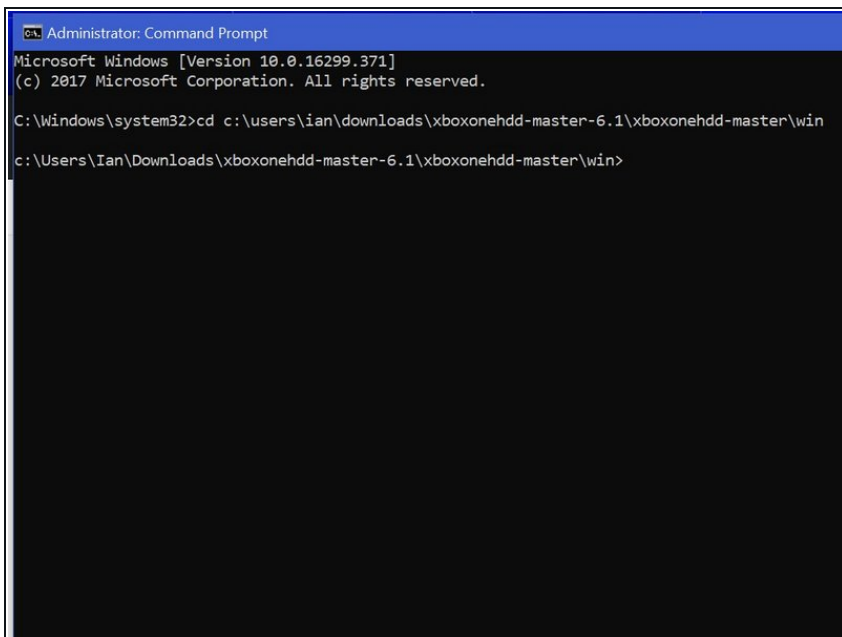
- Connect the new hard drive to the PC. Make sure that the HDD is in a location where it will not be accidentally disconnected.

Step 4 — Download the Script



- This process requires you to run a script to partition the HDD/SSD.
- The links below are for both the download, and the original forum post for the script itself, which was created by user tai1976, of gbatemp.net
- Un-zip the file.
- <https://filetrip.net/dl?RJsmapOKkV>
- <https://gbatemp.net/threads/xbox-one-int...>

Step 5 — Open Command Prompt as Admin



- Press the Windows key/Start menu and type in "CMD", right click, and select 'Run as Administrator'
- Type the command "cd C:\Users\
(Your Name)\Downloads\xboxonehdd-master-6.1\xboxonehdd-master\win"
- Replace (Your name) with the name of your user profile.

Step 6 — Run the Batch File

```
Administrator: Create Xbox One Drive 2018.01.17.6.1

*****
* create_xbox_drive.bat:                                *
* This script creates a correctly formatted Xbox One HDD against the *
* drive YOU select.                                       *
* USE AT YOUR OWN RISK                                    *
*                                                         *
* Created      2016.06.30.2.0                             *
* Last Updated 2018.01.17.6.1                             *
*****

* Administrative permissions required. Detecting permissions... *
* Administrative permissions confirmed                          *

* English language availability required. Checking...         *
* English language availability confirmed                      *

* This script will temporarily change the command line interface to *
* English and change it back when complete.                  *

Press any key to continue . . .
```

- Run the command "create_xbox_drive"
- The next steps are to create a drive that has either 500GB, 1TB, or 2TB storage. If at anytime you get confused, there is a readme file in the folder you extracted that can help out as well.

Step 7 — Follow the On Screen Instructions

```
Administrator: Create Xbox One Drive 2018.01.17.6.1

*****
* create_xbox_drive.bat:                                *
* This script creates a correctly formatted Xbox One HDD against the *
* drive YOU select.                                       *
* USE AT YOUR OWN RISK                                    *
*                                                         *
* Created      2016.06.30.2.0                             *
* Last Updated 2018.01.17.6.1                             *
*****

* Administrative permissions required. Detecting permissions... *
* Administrative permissions confirmed                          *

* English language availability required. Checking...         *
* English language availability confirmed                      *

* This script will temporarily change the command line interface to *
* English and change it back when complete.                  *

Press any key to continue . . .
```

```
Administrator: Create Xbox One Drive 2018.01.17.6.1

[ Englishize Cmd v1.7a ]

# This script changes command line interface to English.
# Designed for localized non-English Windows Vista or above. Any languages.
# Note 1. A few programs without a .mui aren't affected, e.g. xcopy
#       2. _files_to_process.txt can be customized to cover more/less commands
#       3. English MUI can be installed through Windows Update or Vistalizator
#          to support GUI programs such as Paint.

# Completed. To restore, run restore.bat

"This is a 64 Bit Operating System"

Select drive creation type:
(a) Replace/Upgrade w/o a working original drive (Standard Only)
(b) Replace/Upgrade keeping original drive data (Standard and Non)
(c) Fix GUID values w/o formatting the drive (Standard and Non)
(d) Backup "System Update" to current directory (Standard and Non)
(e) Check all partitions for file system errors (Standard and Non)
(f) Wipe drive of all partitions and GUID values (Standard and Non)
(g) CANCEL
?
```

- For this tutorial, we are using the first option (a) Replace/Upgrade w/o a working original drive.

Step 8 — Follow (continued)

```
Administrator: Create Xbox One Drive 2018.01.17.6.1
# Completed. To restore, run restore.bat
"This is a 64 Bit Operating System"
Select drive creation type:
(a) Replace/Upgrade w/o a working original drive (Standard Only)
(b) Replace/Upgrade keeping original drive data (Standard and Non)
(c) Fix GUID values w/o formatting the drive (Standard and Non)
(d) Backup "System Update" to current directory (Standard and Non)
(e) Check all partitions for file system errors (Standard and Non)
(f) Wipe drive of all partitions and GUID values (Standard and Non)
(g) CANCEL
?a
* Scanning for connected USB/SATA drives . . .
Microsoft DiskPart version 10.0.16299.15
Copyright (C) Microsoft Corporation.
On computer: LAPTOPHUFFUKKA

Disk ##  Status      Size  Free  Dyn  Gpt
-----  -
Disk 0   Online       238 GB  0 B   *
Disk 1   Online        14 GB  0 B   *
Disk 2   Online       298 GB  0 B   *

* Select TARGET Xbox One Drive . . .
Press 3 to CANCEL or use a Disk Number from the list above (default 3 in 30 seconds) [0,1,2,3]?2
* Does selected disk contain C: Checking...
* Does not contain C: can continue

The protective MBR's 0xEE partition is oversized! Auto-repairing.
The protective MBR's 0xEE partition is oversized! Auto-repairing.

GUID                               Dev Size  Name
44C68285-2231-4D2F-9909-222938B6923D
The syntax of the command is incorrect.
90C9FFCD-291B-459E-B942-8C6FF4C20CBE E:  GB Healthy 'Sheila'
WARNING: This will erase all data on this disk. Continue [Y,N]?Y

* Disk 2 will be formatted as an Xbox One . . .
Select partition layout:
(a) 500GB Standard
(b) 1TB Standard
(c) 2TB Standard
```

- Make sure to choose the right drive to format, Disk 0 is almost always your operating system, DO NOT CHOOSE DISK 0.
- It will ask you to confirm your selection.
- Then you will need to choose the size of the drive you have created.

Step 9 — The Command is Complete.

```
Administrator: Create Xbox One Drive 2018.01.17.6.1

Volume 0      C      NTFS  Partition  237 GB  Healthy  Boot
Volume 1      Recovery  NTFS  Partition  499 MB  Healthy  Hidden
Volume 2      FAT32  Partition  100 MB  Healthy  System
Volume 3      D      USB   Removable  14 GB   Healthy
Volume 4      U      Temp  Content  NTFS  Partition  41 GB   Healthy
Volume 5      V      User  Content  NTFS  Partition  365 GB  Healthy
Volume 6      W      System Supp  NTFS  Partition  40 GB   Healthy
Volume 7      X      System Upda  NTFS  Partition  12 GB   Healthy
Volume 8      Y      System Upda  NTFS  Partition  7168 MB Healthy

GUID                               Dev Size  Name
A2344BDB-D6DE-4766-9EB5-4109A12228E5 (500GB)
B3727DA5-A3AC-4B3D-9FD6-2EA54441011B U:  41 GB 'Temp Content'
869BB5E0-3356-4BE6-85F7-29323A675CC7 V:  365 GB 'User Content'
C90D7A47-CCB9-4CBA-8C66-0459F6885724 W:  40 GB 'System Support'
9A056AD7-32ED-4141-AEB1-AFB9BD5565DC X:  12 GB 'System Update'
24B2197C-9D01-45F9-A8E1-DBBCFA161EB2 Y:  7168 MB 'System Update 2'

* Found 'System Update' X: drive.
* Script execution complete.
* This script will now change the command line interface back to the *
* default language.
Press any key to continue . . .
```

- Once the command line displays 6 lines of long numbers with "GUID" at the top, the command lines is finished.
- If this doesn't work, clean the disk with diskpart, link below, and try again.
- <http://knowledge.seagate.com/article/s/en...>

Step 10 — Download the Firmware

Step 1: Welcome to the Xbox One System Update Solution

This solution can help you troubleshoot errors caused by an unsuccessful system update on your Xbox One console. It can also help if you need to update your console offline.

Note If your Xbox One console software doesn't update successfully, you may encounter one of several situations. The console might display an error message or error code during or following the update, or the console might not start correctly after the update is complete.

Do you need to troubleshoot a system update error, or perform an offline system update?



Step 2: Perform an Offline System Update

The Xbox One Offline System Update (OSU) process allows you to update your console by downloading a file to a USB flash drive and then installing that file directly onto your Xbox One console.

To use the Offline System Update, you'll need:

- A Windows-based PC with an Internet connection and a USB port.
- A USB flash drive with a minimum 4 GB of space formatted as NTFS.

Which Xbox One console are you updating?



To use the Offline System Update, you'll need:

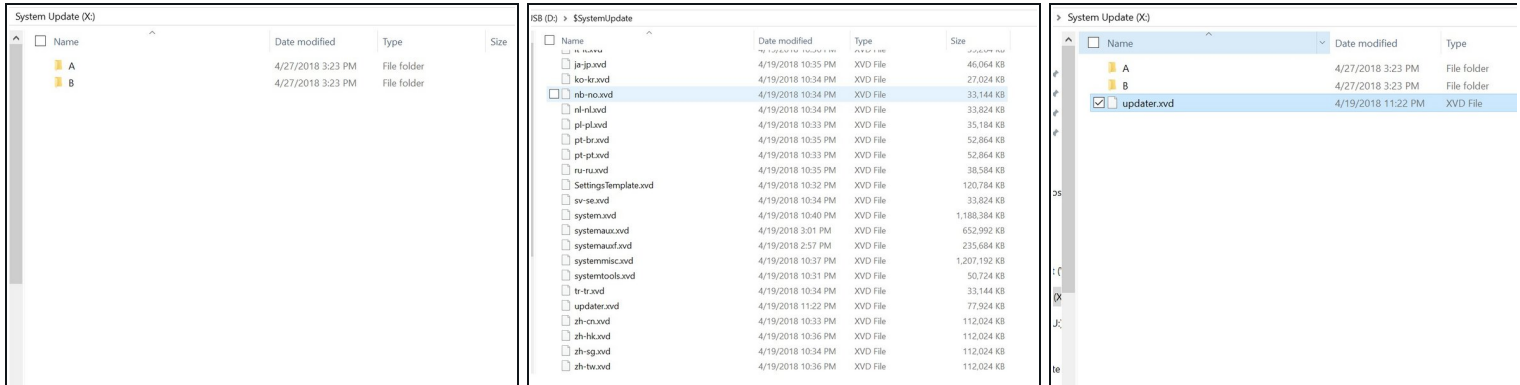
- A Windows-based PC with an Internet connection and a USB port.
- A USB flash drive with a minimum 4 GB of space formatted as NTFS.

Most USB flash drives come formatted as FAT32 and will have to be reformatted to NTFS. Note that formatting a USB flash drive for this procedure will erase all files on it. Back up any files on your flash drive before you format the drive. For information about how to format a USB flash drive to NTFS using a PC, see [How to format a flash drive to NTFS](#) in Windows.

1. Plug your USB flash drive into a USB port on your computer.
2. Open the Offline System Update file OSU1.
3. Click **Save** to save the console update .zip file to your computer.
4. Unzip the file by right-clicking on the file and selecting **Extract all** from the pop-up menu.
5. Copy the **\$SystemUpdate** file from the .zip file to your flash drive.
Note The files should be copied to the root directory, and there shouldn't be any other files on the flash drive.
6. Unplug the USB flash drive from your computer.

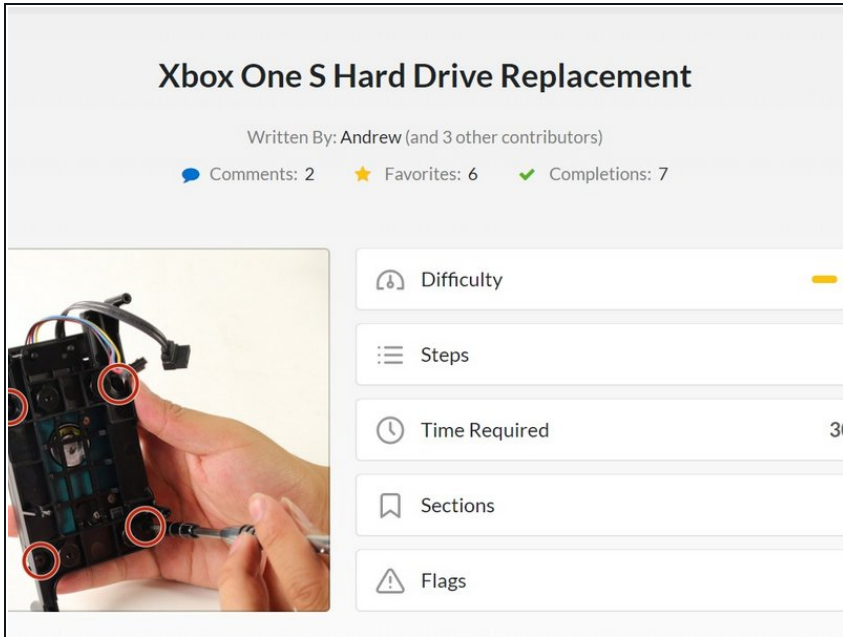
- You need to go to the XBox official site and download a file called OSU 1.
- <https://support.xbox.com/en-US/xbox-one/...>
- Select "I need to update my console offline"
- Select "Xbox One S or Xbox One X"
- Click the green link "OSU1" to start the download.

Step 11 — Copy files



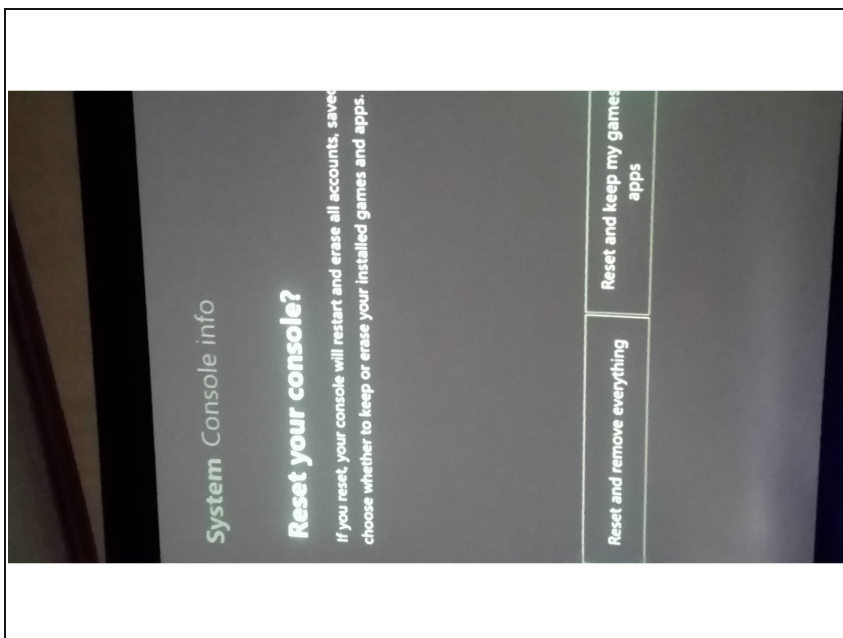
- Navigate to the System Update (X) drive, and create 2 folders, one labeled "A" and one "B"
- Extract all of the files from OSU1, and copy everything in \$SystemUpdate, except for "updater.xvd"
- Paste these files in the folders "A" and "B" that you created.
- Copy "updater.xvd" from \$SystemUpdate and paste it in the root of System Update (X)
- Note that you will need to download the bootanim.dat and store it in folders "A" and "B" as well. There are two different versions you can download one for OG / S or the X. Without the file the Xbox will boot with a black screen to the menu and not the boot logo.

Step 12 — Put the Hard Drive in the Xbox



- Safely eject the media and put it back into the Xbox
- Reassemble the Xbox and then start it up
- [Xbox One S Hard Drive Replacement](#)
- If the Xbox gives you trouble, Factory Resetting it will fix it.
- <https://support.xbox.com/en-US/xbox-one/...>

Step 13 — Reset console



- Some users have experienced sign in issues after an ssd upgrade. If this occurs, simply reset the console (keep games and apps if need be.) and that should resolve the issue.
- Those who have their Xbox set to "energy saving" mode for startup may experience a 20-30 second black screen before boot. Changing this setting to "instant on" resolves this issue.
- Now enjoy 20x faster r/w speeds and loading times a fraction that of a standard HDD.

Step 14 — You are Finished



- You are now finished, enjoy your XBox!
- Note: This does work with Solid State Drives.

To reassemble your device, put the hard drive back in the Xbox One S and reassemble.