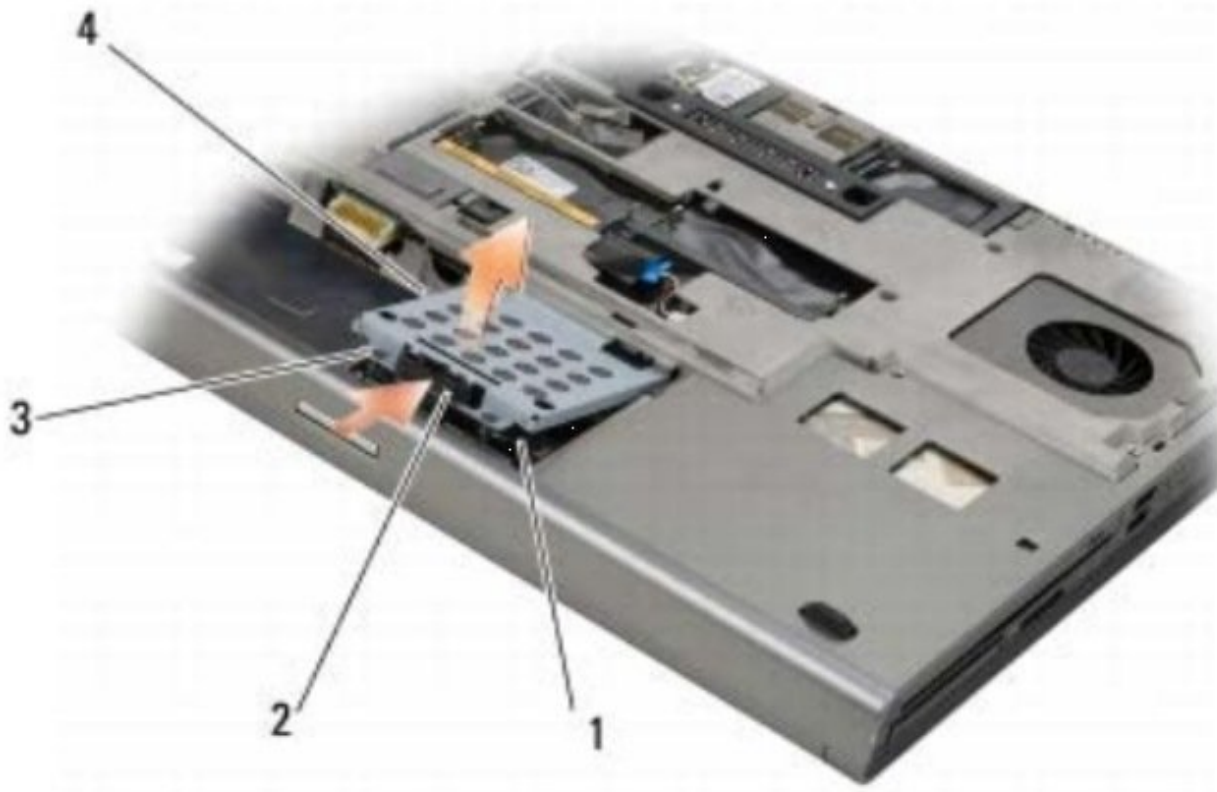




Dell Precision M6400 Hard Drive Replacement

Written By: Johnathan Hammond





TOOLS:

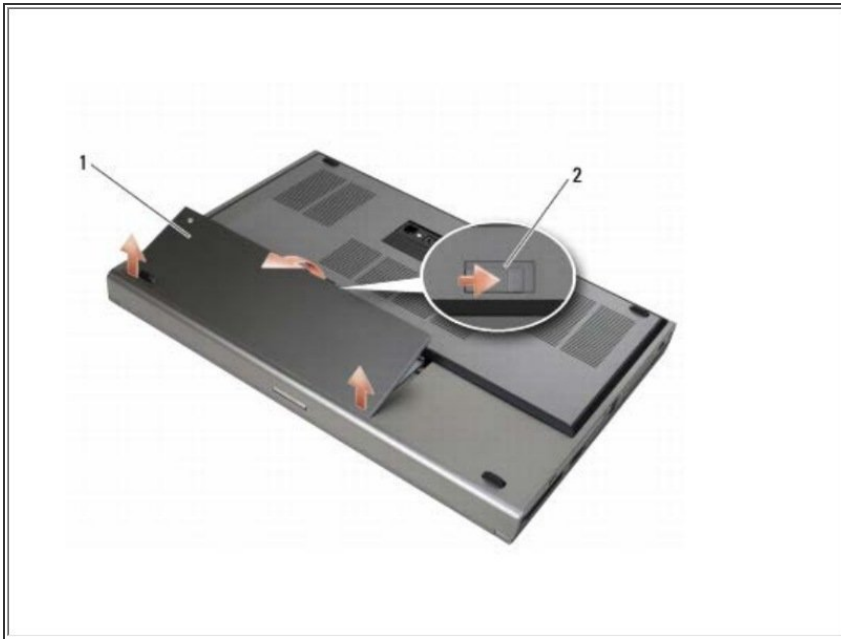
- [Phillips #0 Screwdriver](#) (1)



PARTS:

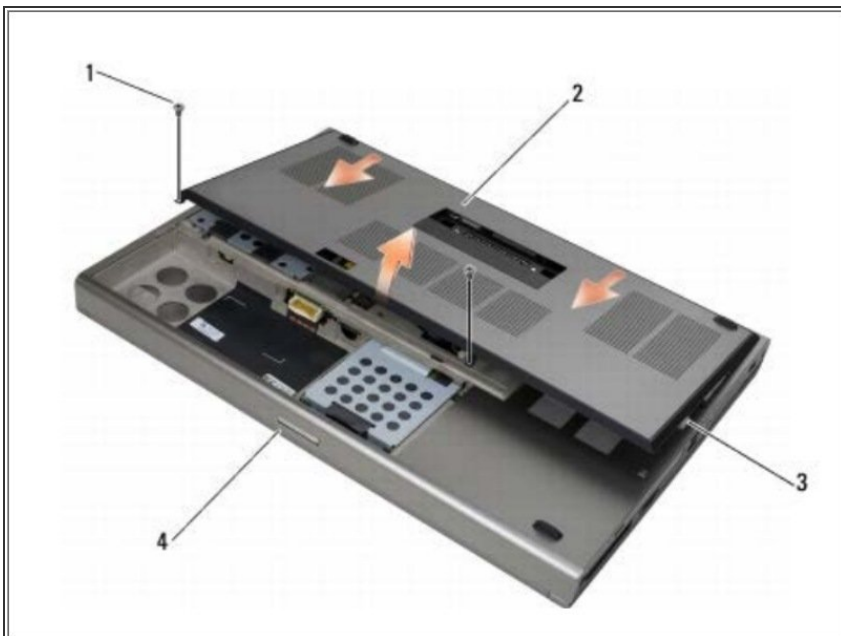
- [1 TB SSD](#) (1)
- [250 GB SSD](#) (1)
- [500 GB SSD](#) (1)
- [2 TB SSD](#) (1)

Step 1 — Battery



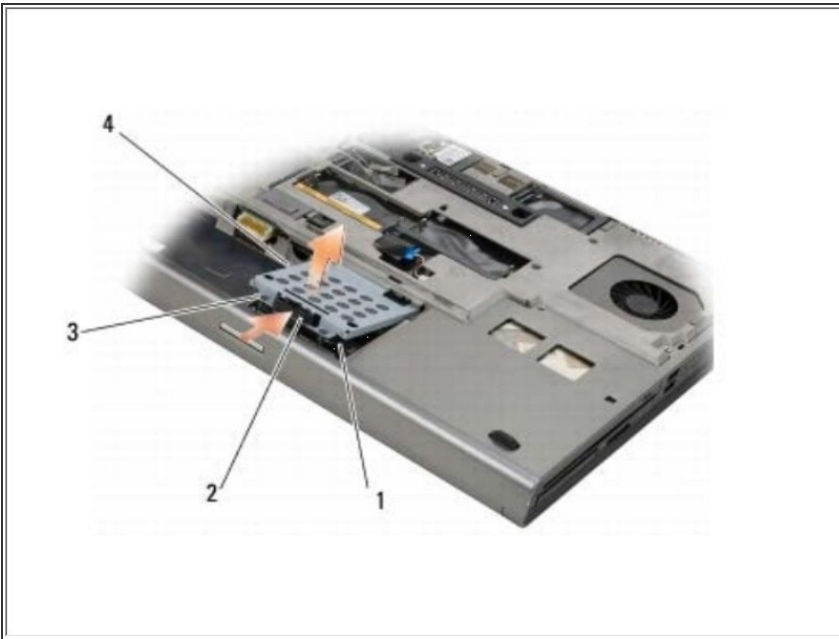
- Slide the battery release latch and remove the battery.

Step 2 — Base Cover



- Remove the two M2 x 3-mm screws.
- Slide the cover toward the front of the computer to release the tabs from the base assembly.
- Remove the cover from the base assembly.

Step 3 — Hard Drive



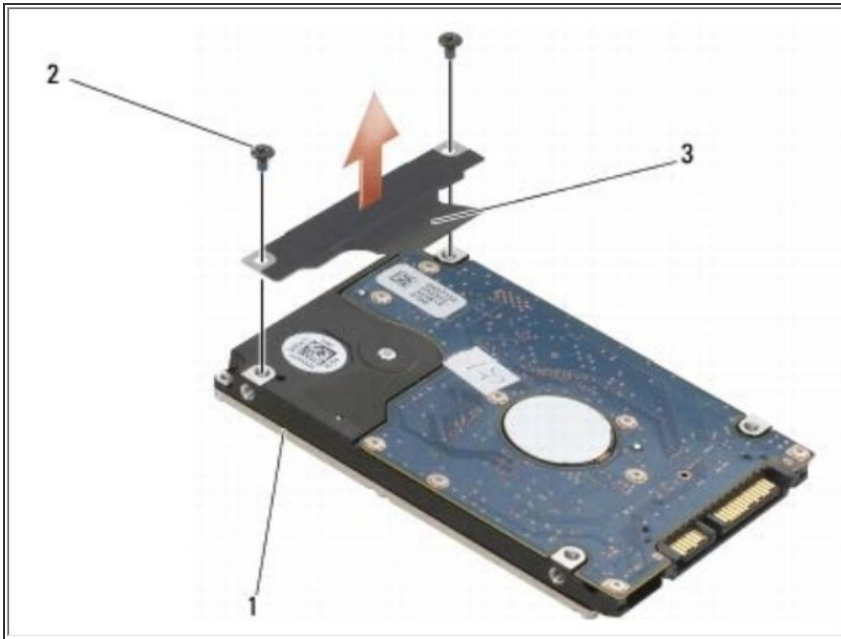
- Loosen the two captive screws on the HDD1 carrier, and remove the carrier.
- Push in, then pull up on the safety loop to remove the cover.
- Use the pull tab to disconnect the HDD1 from the connector on the system board, and remove the HDD1 from the computer.

Step 4



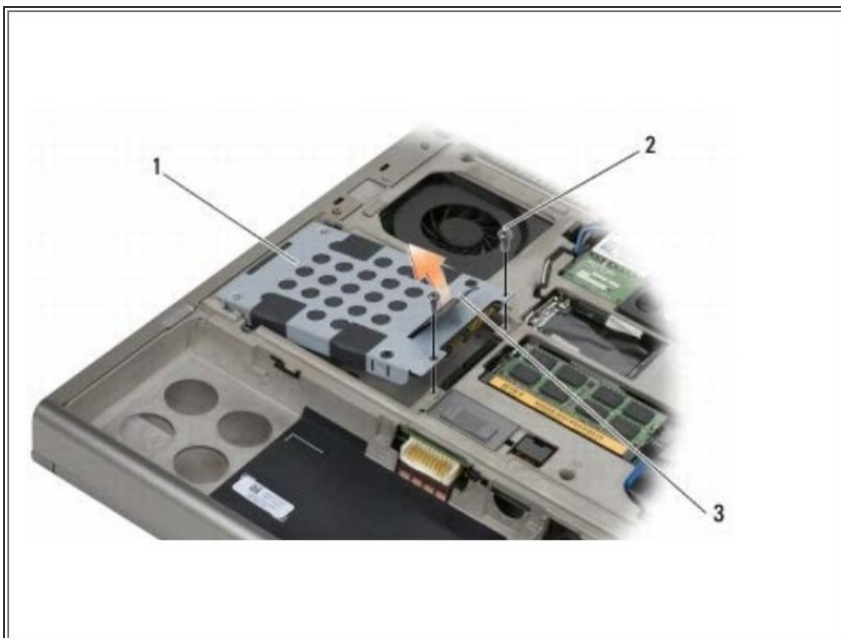
- Remove the two M3 x 3-mm screws that secure the pull tab to the HDD1.
- Set the pull tab aside to use with the replacement HDD1.

Step 5



- Remove the two M3 x 3-mm screws that secure the carrier to the computer.
- Pull up on the pull tab to remove the carrier.

Step 6



- Remove the two M3 x 3-mm screws that secure the carrier to the HDD2.
- Remove the carrier from the HDD2. If your computer does not have an HDD2, remove the hard drive place-holder from the carrier.
- Remove the interposer from the HDD2 or the place-holder, and set the interposer aside.

To reassemble your device, follow these instructions in reverse order.