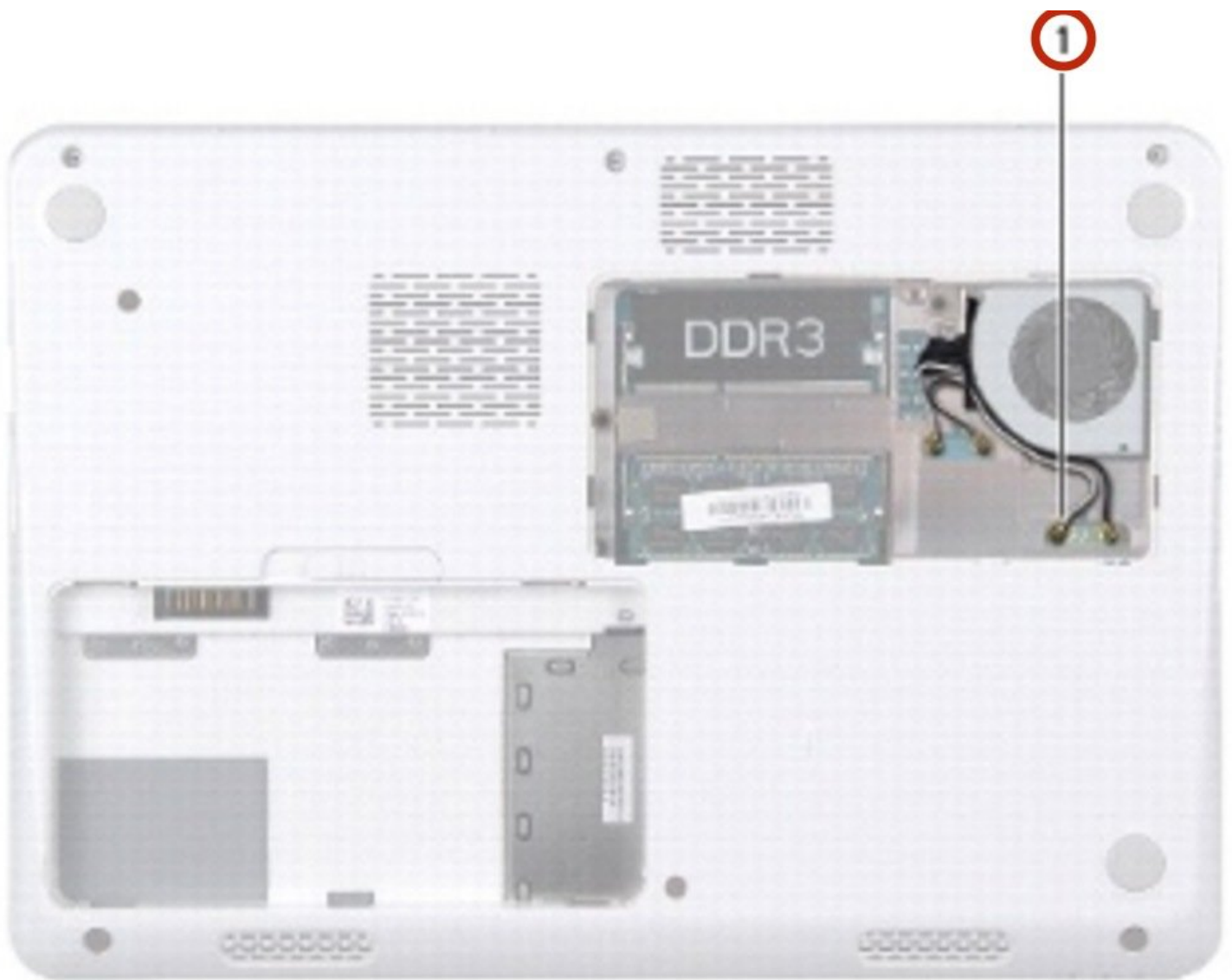




Dell Inspiron 13z N301z Display Assembly Replacement

Written By: Terrence15



INTRODUCTION

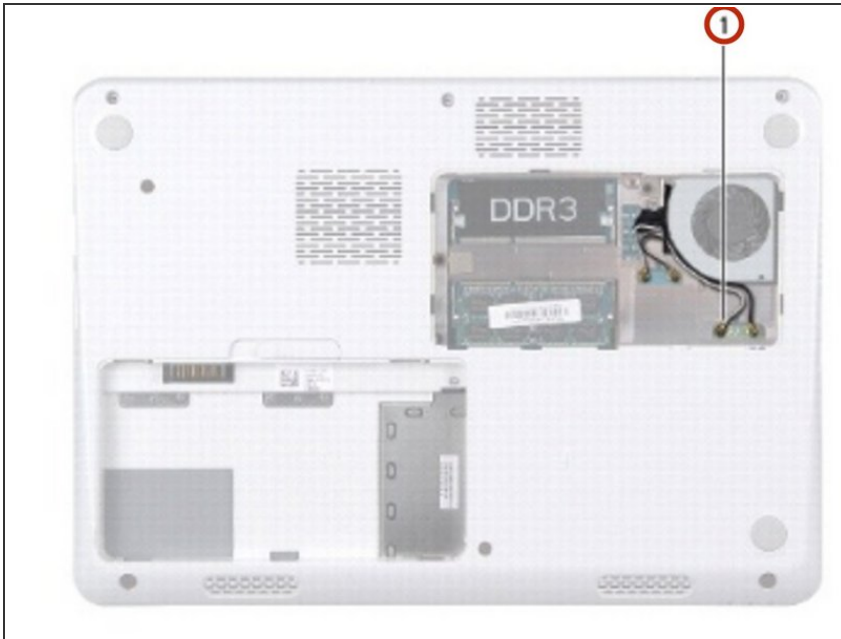
In this guide, we will be showing you how to remove and replace the Display Assembly.




TOOLS:

- [Phillips #0 Screwdriver](#) (1)
-

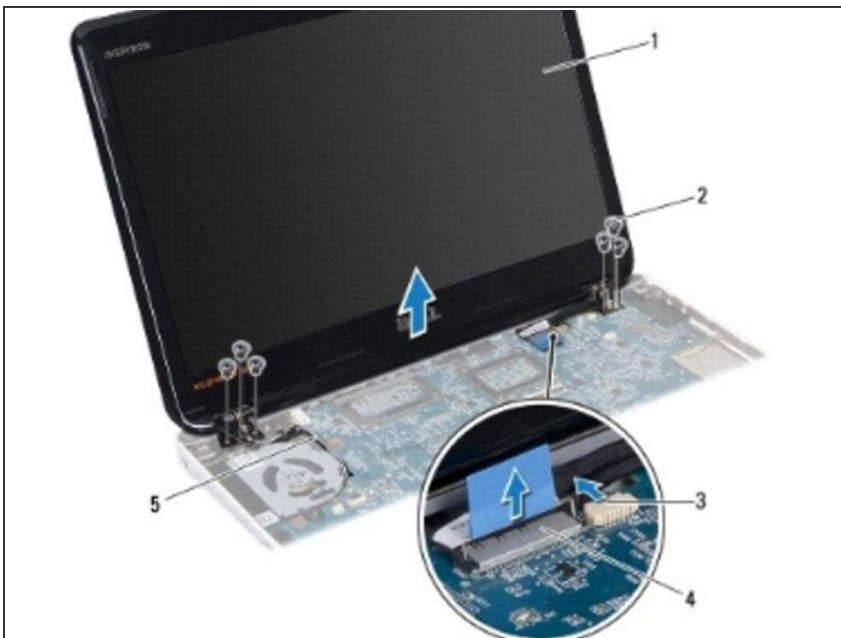
Step 1 — Disconnecting the Antenna Cables



 Follow the instructions in [Before You Begin](#).

- Turn the computer over.
- Disconnect the Mini-Card antenna cables from the computer base.

Step 2 — Opening the Display



- Turn the computer over and open the display as far as possible.

Step 3 — Disconnecting the Display Cable



- Disconnect the display cable and the camera cable from their connectors on the system board.

Step 4 — Removing the Cables



- Make a note of the routing of the Mini-Card antenna cables and remove the cables from the routing guides.

Step 5 — Remove the Screws



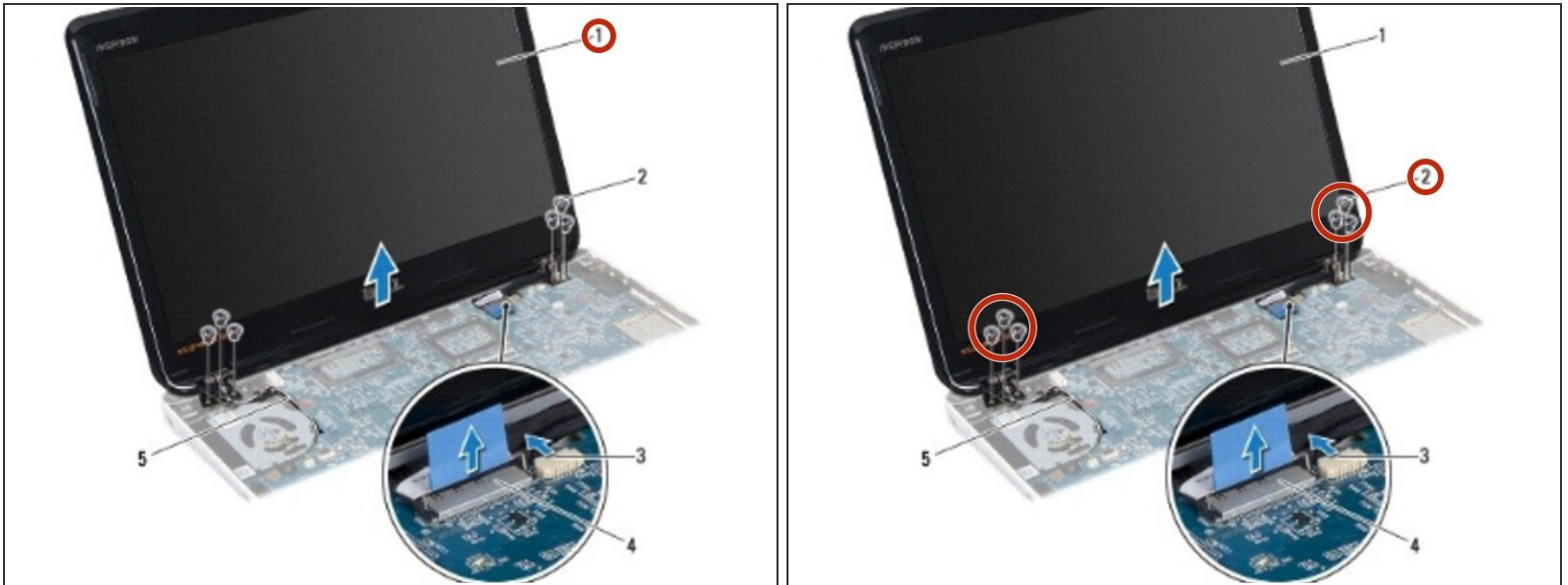
- Remove the six screws (three on each side) that secure the display assembly to the computer base.

Step 6 — Removing the Display Assembly



- Lift and remove the display assembly off the computer base.

Step 7 — Placing the Display Assembly



- Place the **NEW** display assembly in position and replace the six screws (three on each side) that secure the display assembly to the computer base.

Step 8 — Routing the Antenna Cables



- Route the Mini-Card antenna cables through the slot on the computer base.

Step 9 — Connecting the Cables



- Connect the display cable and the camera cable to their connectors on the system board.