



Dell Studio 1440 KeyBoard Replacement

Written By: Johnathan Hammond

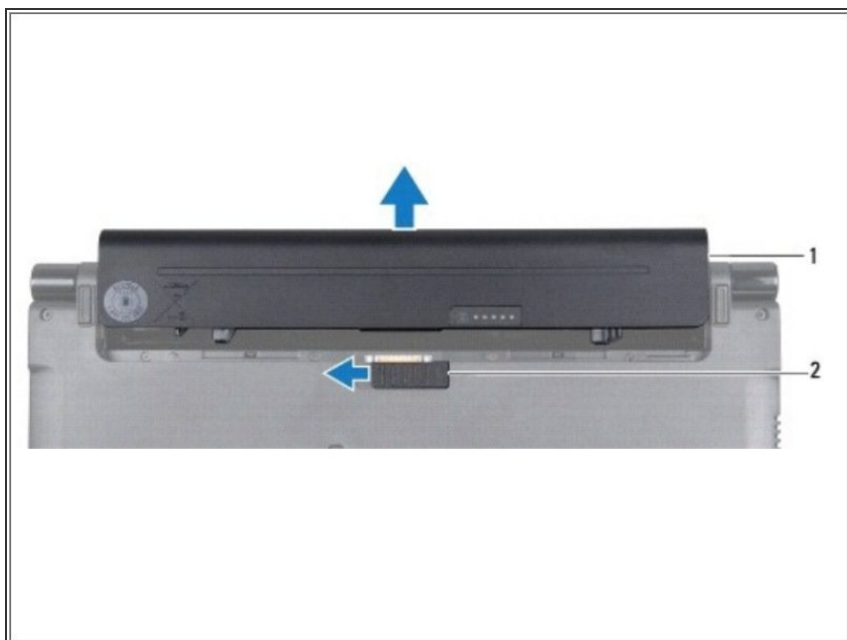




TOOLS:

- [Phillips #0 Screwdriver](#) (1)
 - [Spudger](#) (1)
-

Step 1 — Battery



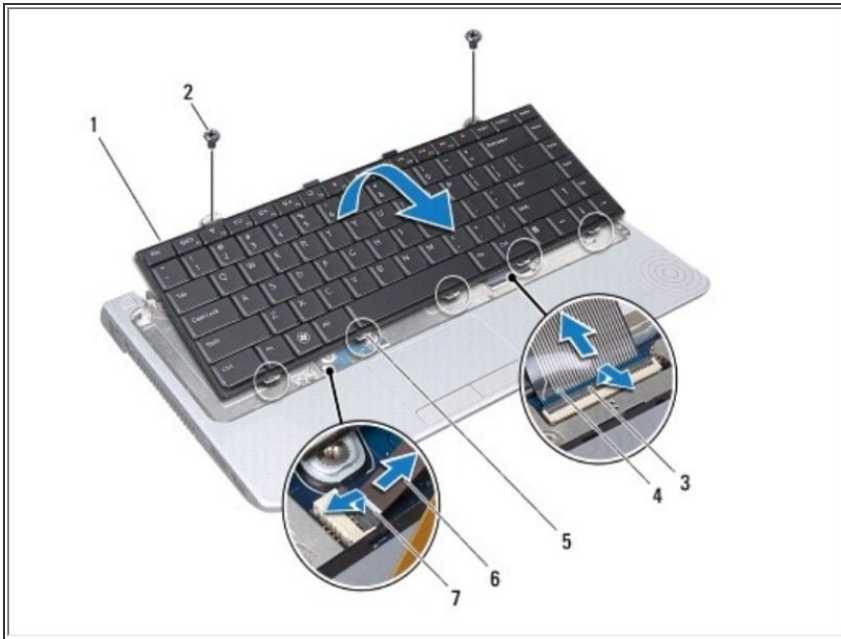
- Slide the battery release latch until it clicks into place.
- Slide the battery out of the battery bay.

Step 2 — KeyBoard



- Turn the computer over and open the display.
- Ease the keyboard surround up using your fingers or a plastic scribe.

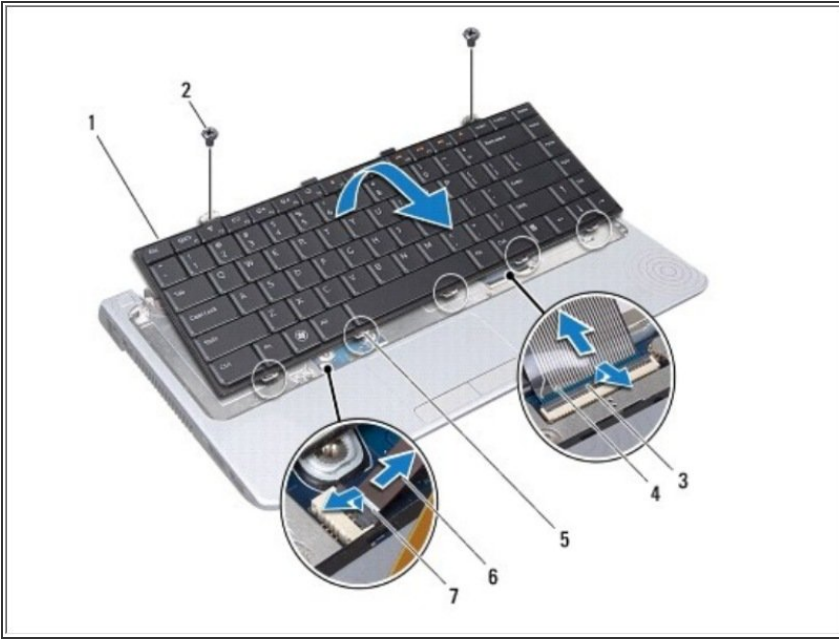
Step 3



- Lift the keyboard surround off the computer.
- Remove the two screws at the top of the keyboard.
- ⚠ CAUTION: The keycaps on the keyboard are fragile, easily dislodged, and time-consuming to replace. Be careful when removing and handling the keyboard.
- Carefully slide the keyboard out of the computer and turn it over as indicated in the following illustration.

⚠ CAUTION: Be extremely careful when removing and handling the keyboard. Failure to do so could result in scratching the display panel.

Step 4



- Release the keyboard cable connector latch and disconnect the keyboard cable from the system board connector.
- For backlit keyboards, release the keyboard backlight cable connector latch to disconnect the keyboard backlight cable from the system board connector.
- Lift the keyboard off the computer.

To reassemble your device, follow these instructions in reverse order.