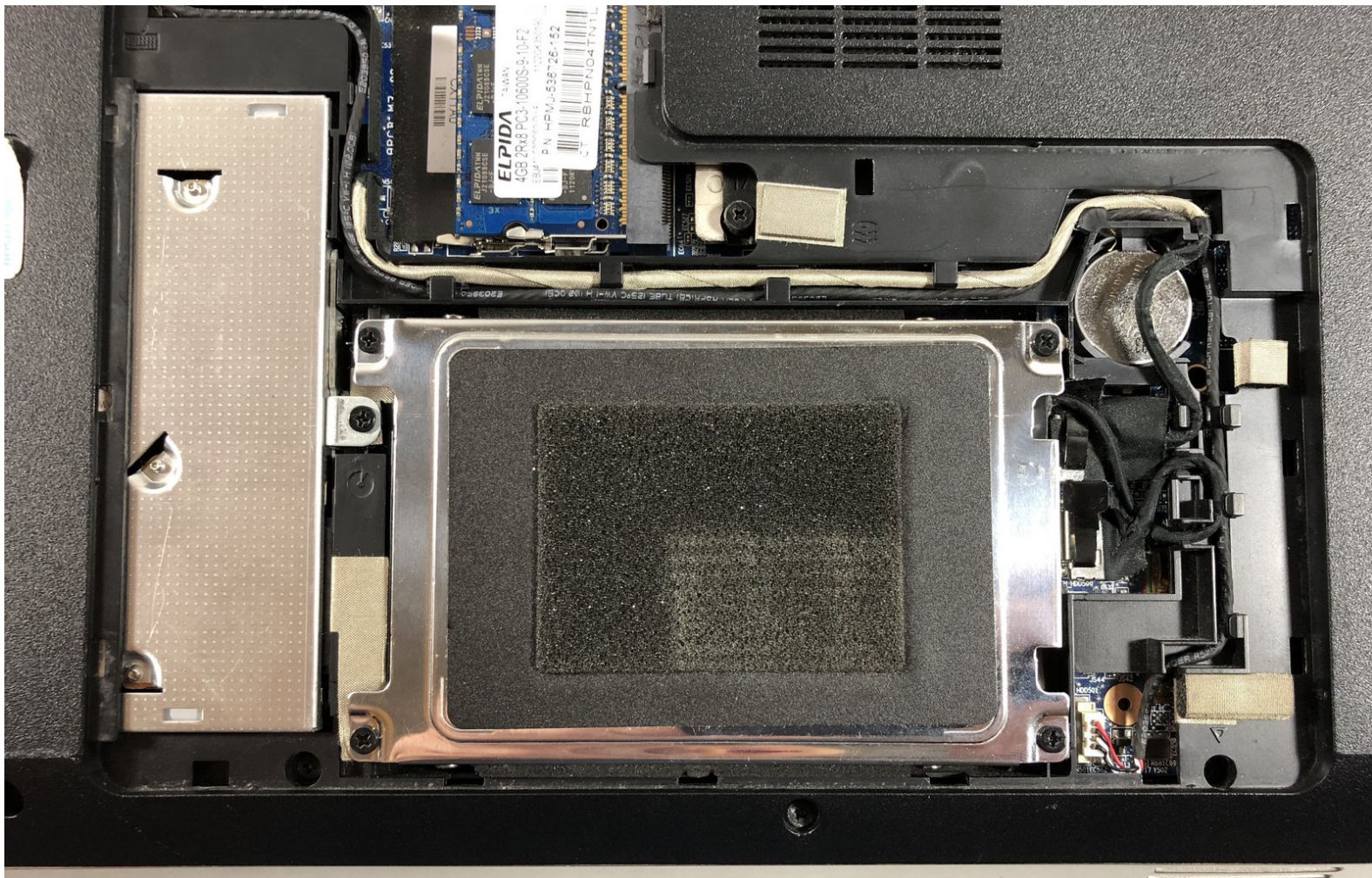




HP Pavilion dv6-6117dx Hard Drive Replacement

Is your computer out of storage? Maybe you want...

Written By: Joshua Holme



INTRODUCTION

Is your computer out of storage? Maybe you want to make your computer faster. Replacing the hard drive with a Solid State Drive (SSD) will help make your computer run faster, while also giving you more storage if you get a larger one. This guide will walk you through replacing your hard drive with another hard drive or SSD. Grab a spudger, a Phillips #0 screw driver and a clean work space, then follow the steps below.



TOOLS:

- [Phillips #0 Screwdriver](#) (1)
- [Spudger](#) (1)



PARTS:

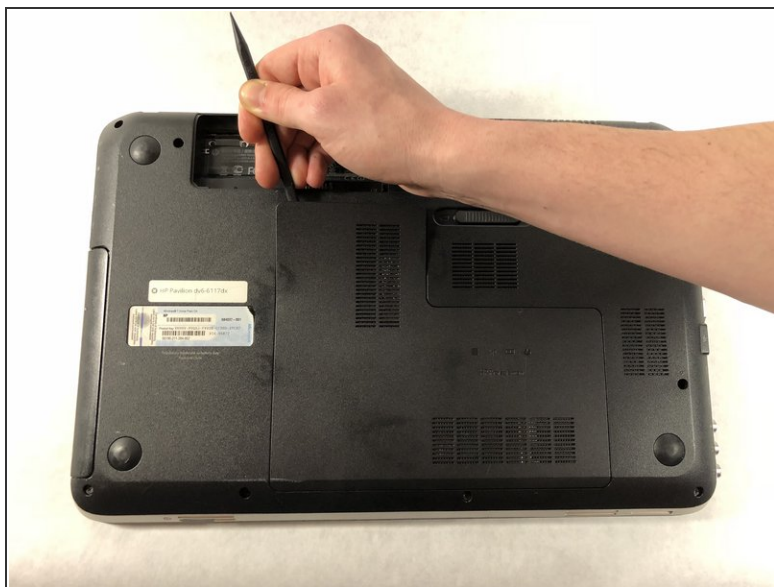
- [1 TB SSD](#) (1)
- [Crucial MX500 250 GB SSD](#) (1)
- [Crucial MX500 500 GB SSD](#) (1)
- [2 TB SSD](#) (1)

Step 1 — Hard Drive



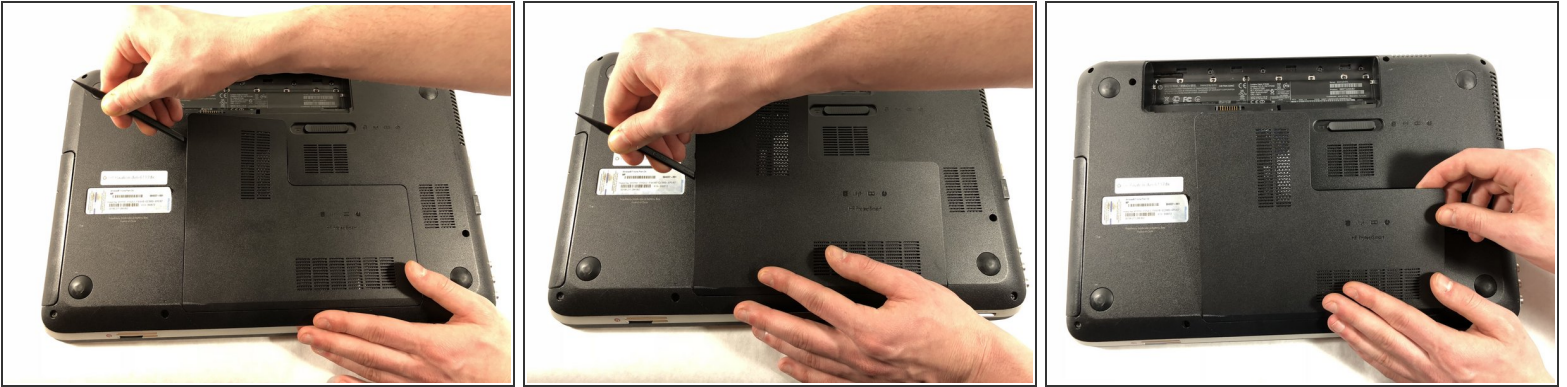
- Begin removing the bottom cover by sliding the battery removal slider to the right to pop off the top of the cover.

Step 2



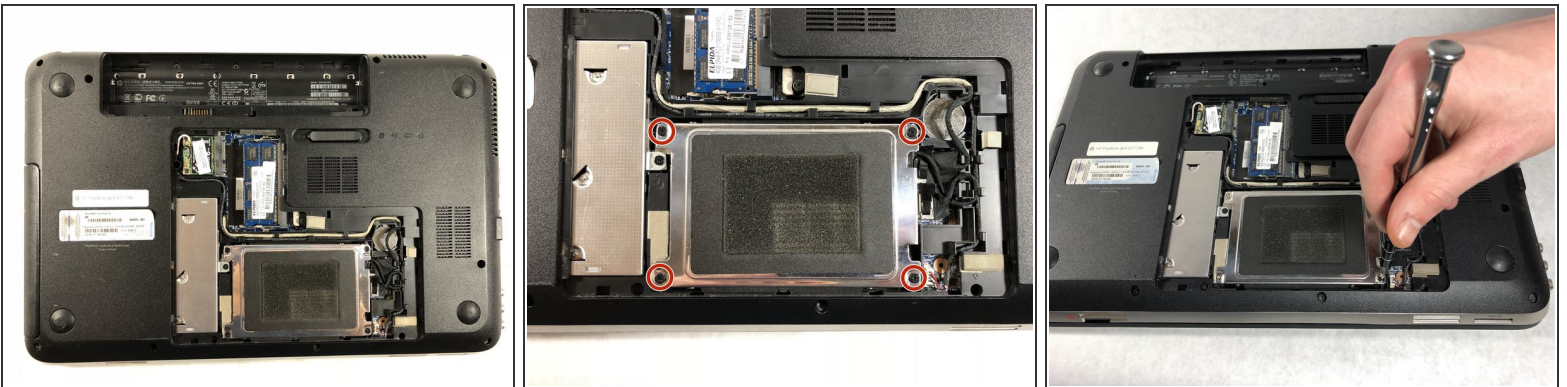
- Slide a black spudger under the top of the cover to loosen the clips underneath.

Step 3



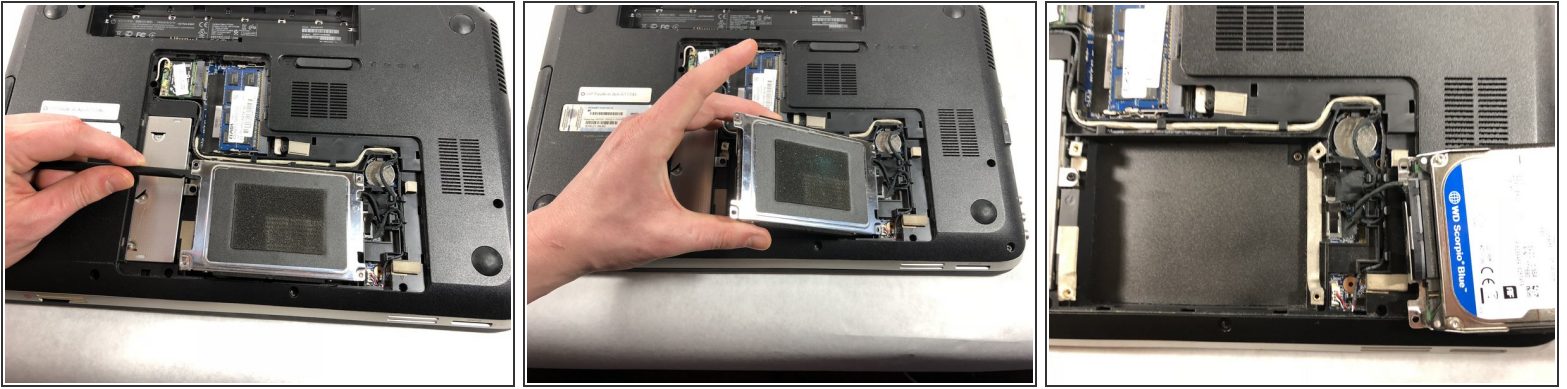
- Slide the spudger down the left side of the cover to loosen the clips.
 - After the left side is loose, the rest of the cover should pop off, and you can remove it with your hands.
- ☒ When reassembling, insert the bottom of the cover first, and then firmly press along the edges from bottom to top to secure it in place.

Step 4



- Using a Phillips #0 screw driver, remove the four 4mm screws holding the hard drive in place.

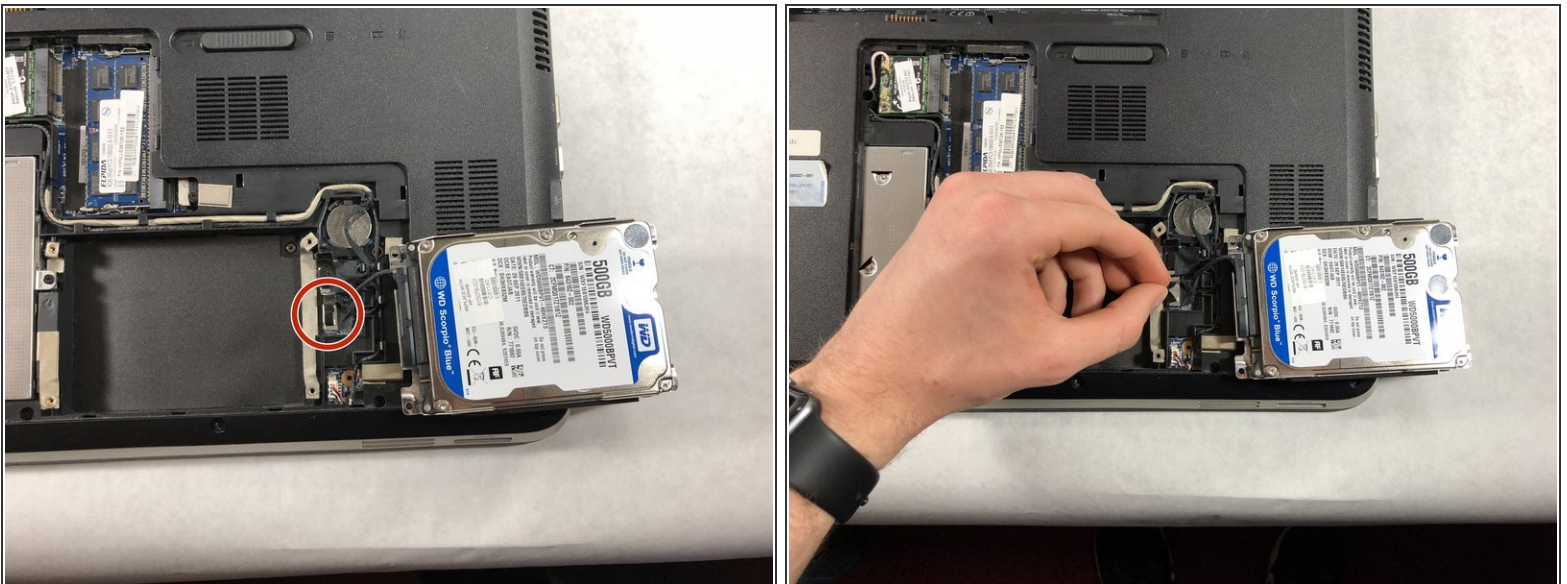
Step 5



- Using a plastic spudger, lift up the hard drive from the top left corner and flip it to the right of the laptop like opening a book.

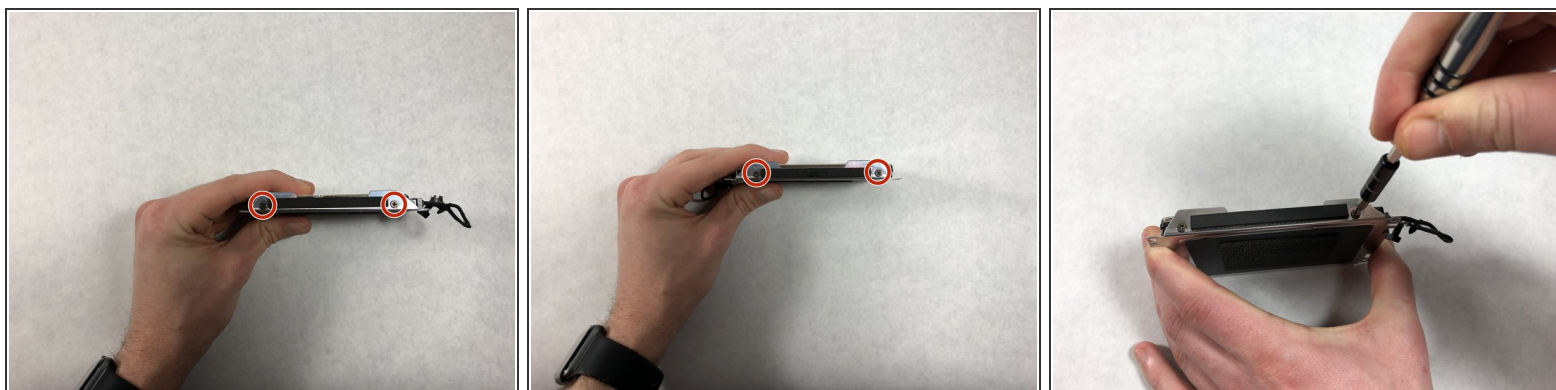
⚠ There is a cable connecting the hard drive to the laptop, be sure not to pull it out when flipping the hard drive.

Step 6



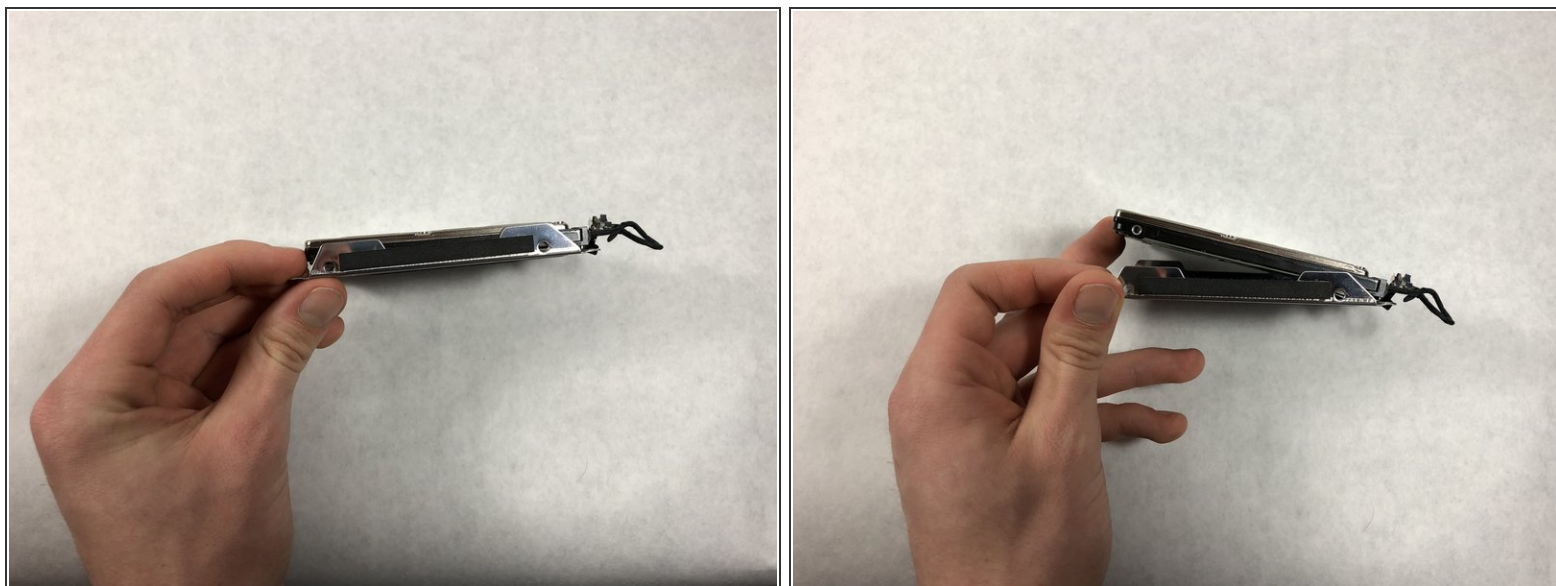
- Pull the tab at the end of the cable connecting the hard drive to the laptop.

Step 7



- Using a Phillips #0 screw driver, remove the four 4mm screws on each side of the hard drive attaching it to its carriage.

Step 8



- Remove the hard drive from its carriage.

Step 9



- Remove the SATA cable from the hard drive.

To reassemble your device, follow these instructions in reverse order.