



HP Elitebook 2740p WI-FI card Replacement

In this guide we will be removing the back and replacing the WI-FI card for the HP Elitebook 2740p.

Written By: Andrew Furze



INTRODUCTION

If the WI-Fi on your HP Elitebook 2740p is not working properly it may be time to replace your WI-Fi card. This guide will go through the steps to replace it.



TOOLS:

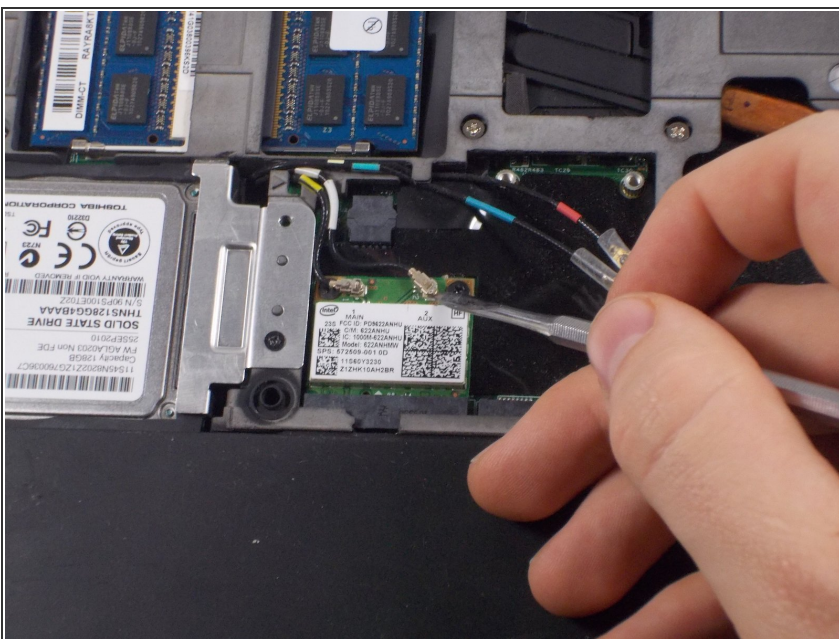
- [Phillips #0 Screwdriver](#) (1)
 - [Spudger](#) (1)
-

Step 1 — Wi-Fi Card



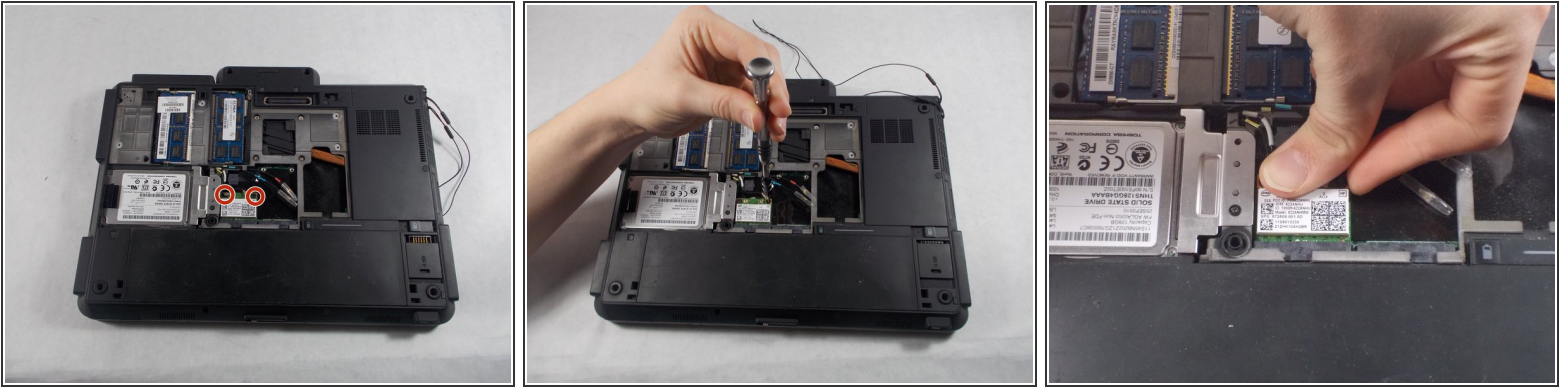
- Place the laptop face down in front of you.
- Use a Phillips #0 screwdriver to remove the three 3 mm screws from the back of the case.
- Remove the back panel.

Step 2



- Remove the two wires that are attached to the WiFi card.

Step 3



- Use a Phillips #0 screwdriver to remove the two 3 mm Philips head screws from the WiFi card.
- Remove the card.

To reassemble your device, follow these instructions in reverse order.