



Dell Precision M6600 RAM Replacement

Follow these steps to replace the RAM.

Written By: Kaley lindsay

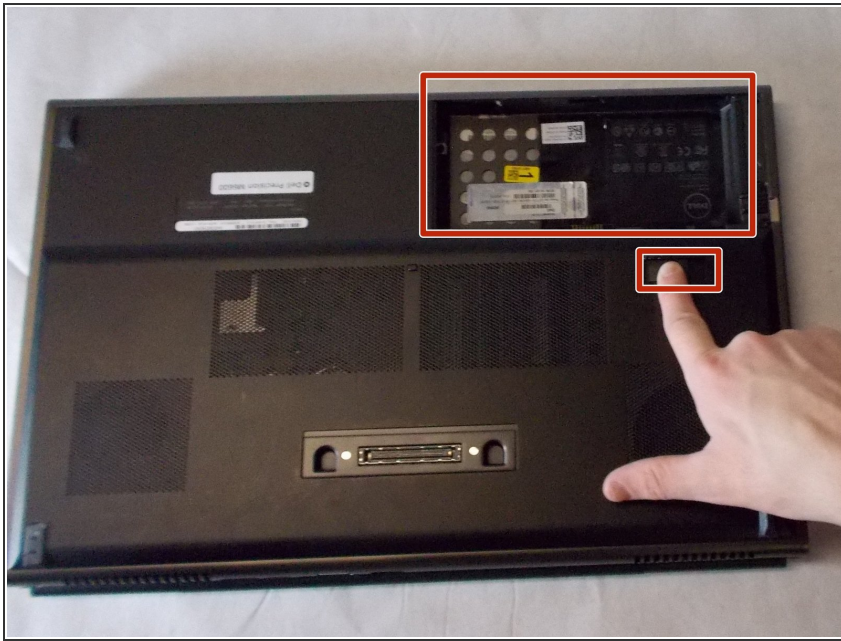




TOOLS:

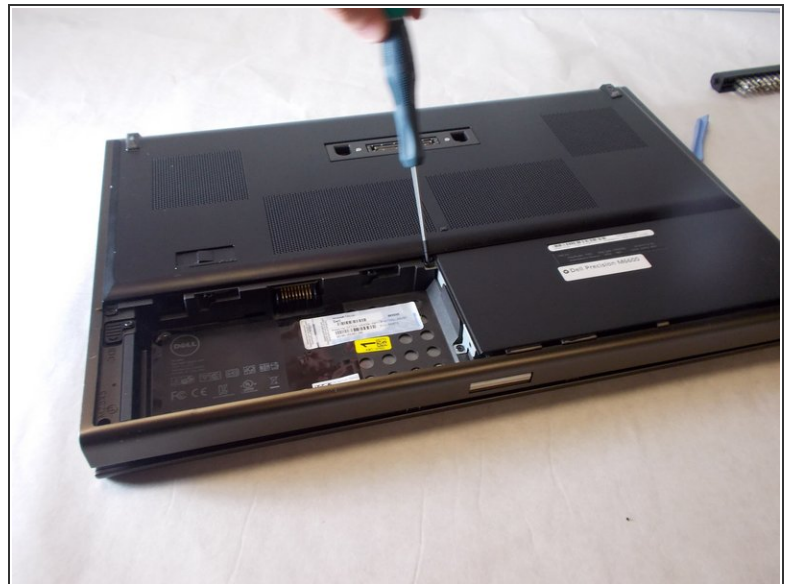
- [Fingers](#) (1)
 - [Phillips #00 Screwdriver](#) (1)
-

Step 1 — Battery



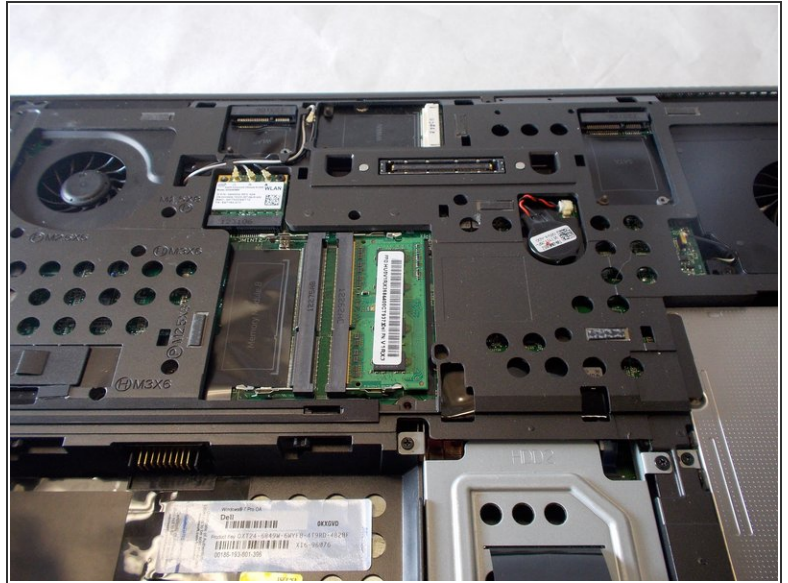
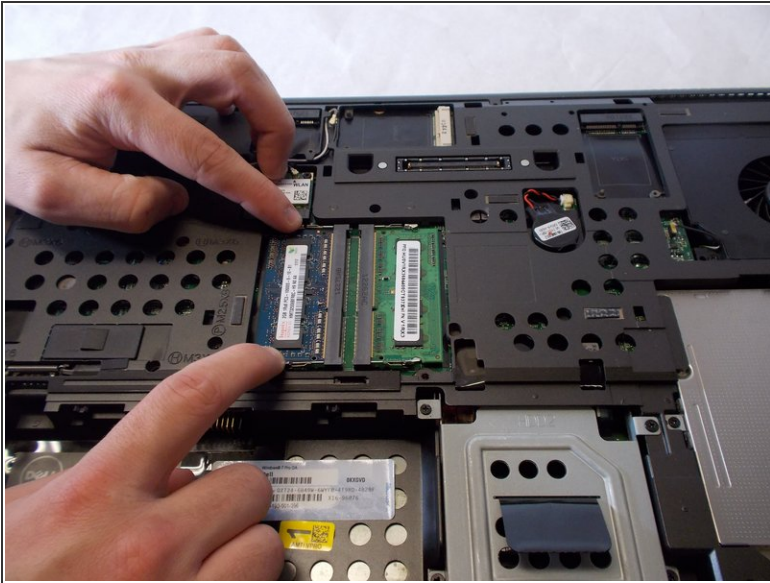
- Slide the lock key to unlock the battery. Then you can lift the battery from its holder.

Step 2 — RAM



- There are two 1.5mm screws that will be taken off using a Phillips #00 screw driver.

Step 3



- The RAM is held in place by two prongs. By pulling the two prongs lightly away from the chip the RAM is able to be pulled out.

To reassemble your device, follow these instructions in reverse order.