



Gateway M-2626u CPU Replacement

This guide will help you remove the CPU in your Gateway M-2626u laptop.

Written By: Armani Tayeh



INTRODUCTION

If your computer is failing due to old age and you think you need a CPU replacement, follow this guide to help replace it.



TOOLS:

- [iFixit Opening Tools](#) (1)
 - [Flathead 3/32" or 2.5 mm Screwdriver](#) (1)
 - [Phillips #1 Screwdriver](#) (1)
-

Step 1 — Back Panel



- Using the Phillips #1 screwdriver, remove the four 6mm screws on the back of the laptop.

Step 2



- Insert the plastic prying tool and pry the back panel off starting at an edge and moving your way around it.

Step 3 — CPU Fan



- Remove the header by pulling on it with two fingers.

Step 4



- Remove the six 2.5mm screws using a Phillips #1 screwdriver.

Step 5



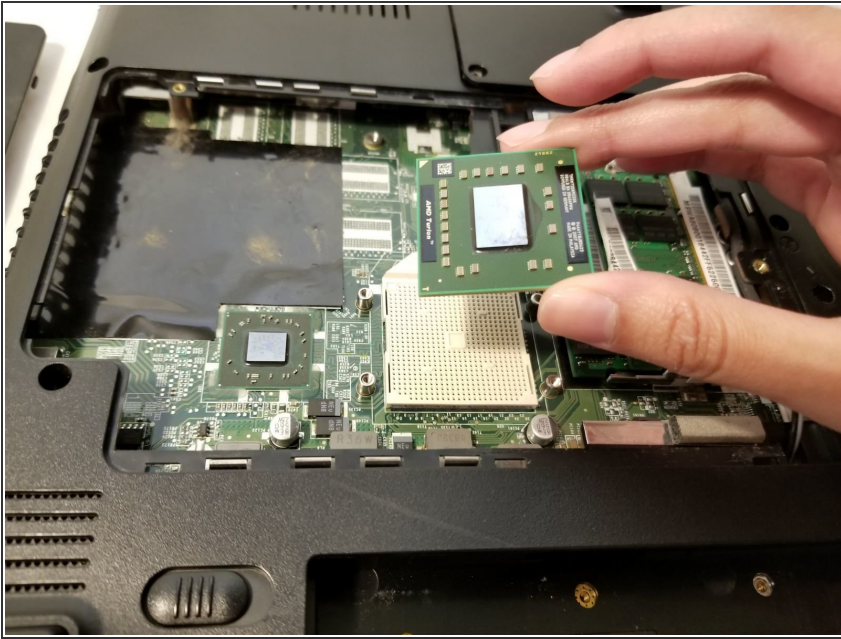
- Remove the fan by moving it to the side and lifting it out of the computer.

Step 6 — CPU



- Once the fan is removed, locate the CPU.
- Rotate the plastic knob using a flat head screw driver as depicted in this image

Step 7



- Lift and remove the CPU from the mother board socket.

To reassemble your device, follow these instructions in reverse order.