



Gateway P-6831FX Keyboard Replacement

The keyboard is a component that will allow you to type and input commands. This guide will go over how to remove and replace the keyboard for the P-6831FX.

Written By: Justin Freitas



INTRODUCTION

The keyboard is a component that will allow you to type and input commands on your device. This guide will go over how to remove and replace the keyboard for the P-6831FX.

TOOLS:

- [Phillips #0 Screwdriver](#) (1)
-

Step 1 — Keyboard



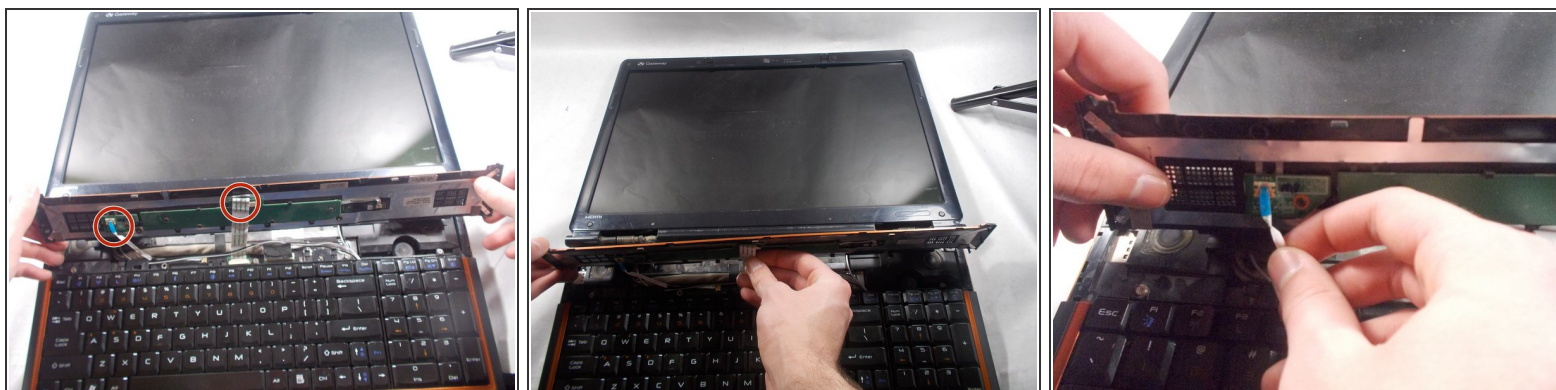
- Open your laptop and lay it flat
- Locate the speaker grill/interaction bar.

Step 2



- Remove the speaker grill/interaction bar by pulling up at both edges.

Step 3



- Detach the two ribbon cables on the underside of the keyboard.

Step 4



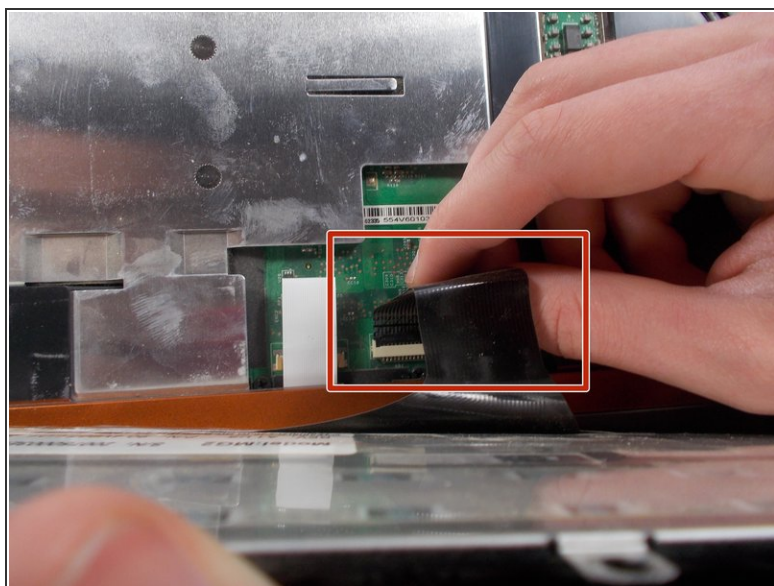
- Remove the five Philips #0 (3mm) screws securing the keyboard in place.

Step 5



- Pull the keyboard up and away from you.

Step 6



- Remove the ribbon cable attached underneath to the keyboard.

To reassemble your device, follow these instructions in reverse order.