



HP Pavilion dv6-6117dx WiFi Adapter Replacement

This guide will help you replace the WiFi Adapter in the HP Pavilion dv6-6117dx

Written By: Joshua Holme



INTRODUCTION

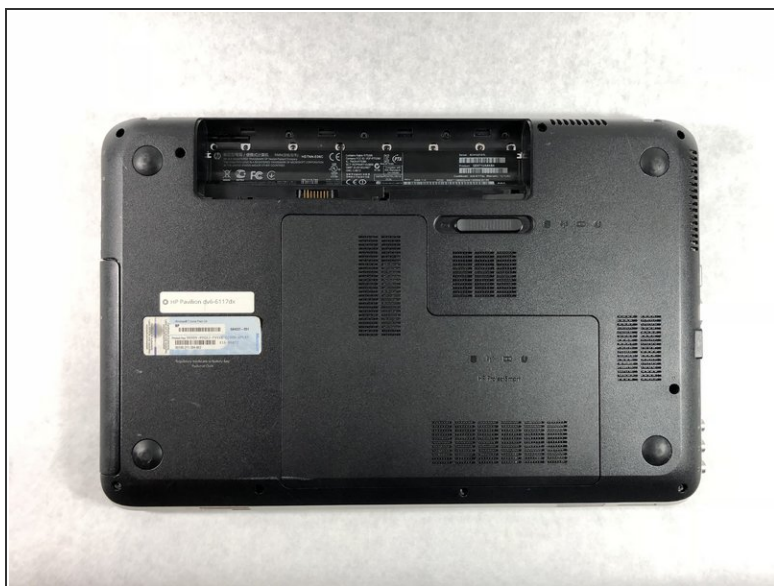
Are you unable to connect to WiFi? Your WiFi adapter may be broken. This guide will walk you through replacing it with a new, working WiFi adapter, with only a spudger and a Phillips #0 screw driver. Once you have a clean work space and the tools required, follow the steps below.



TOOLS:

- [Phillips #0 Screwdriver](#) (1)
 - [Spudger](#) (1)
-

Step 1 — WiFi Card



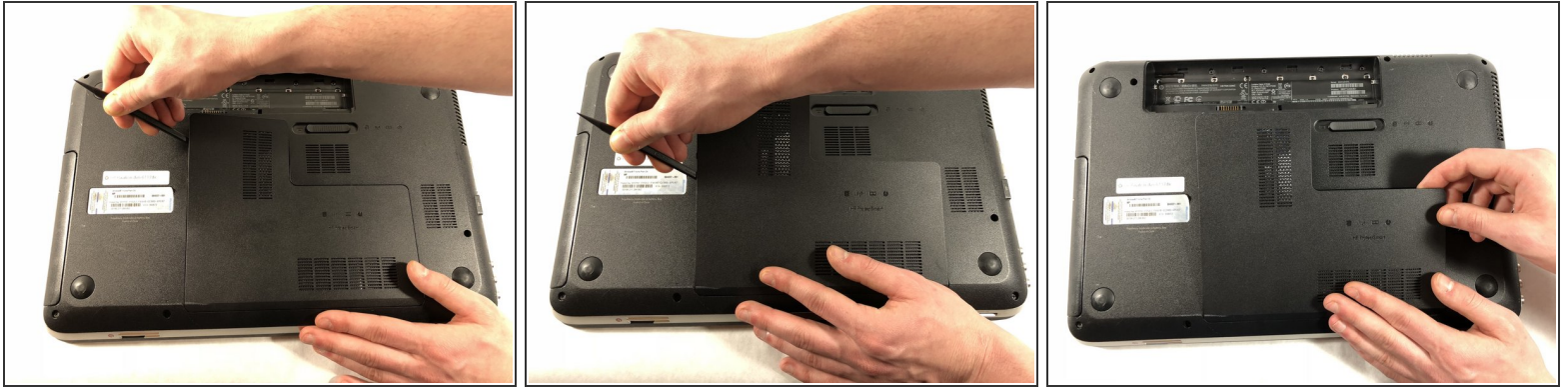
- Begin removing the bottom cover by sliding the battery removal slider to the right to pop off the top of the cover.

Step 2



- Slide a black spudger under the top of the cover to loosen the clips underneath.

Step 3



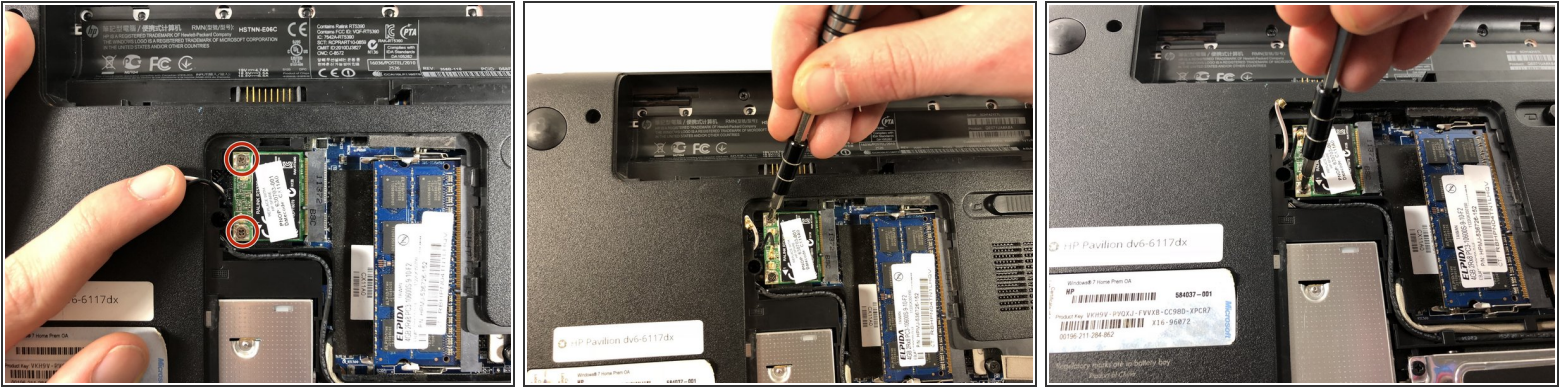
- Slide the spudger down the left side of the cover to loosen the clips.
 - After the left side is loose, the rest of the cover should pop off, and you can remove it with your hands.
- ☒ When reassembling, insert the bottom of the cover first, and then firmly press along the edges from bottom to top to secure it in place.

Step 4



- Using a spudger, remove the white and black antenna wires from the WiFi Adapter
- ☒ When connecting these wires later, line up the connector and press straight down until you feel them snap in place.


Step 5




- Using a Phillips #0 screw driver, remove the two 4mm screws holding the WiFi adapter in place
- After the screws are removed the WiFi Adapter will raise to a 45° angle.

Step 6



 Always handle the WiFi Adapter by the edges to avoid damaging the part.

- Pull the WiFi Adapter out of the slot at a 45° angle.
-  When inserting the new WiFi Adapter, you should insert it at this same angle.

To reassemble your device, follow these instructions in reverse order.

This document was generated on 2020-11-21 12:55:30 AM (MST).

