



Toshiba Satellite L55t-B5271 Screen Replacement

This guide will assist you in removing the...

Written By: Carson Longendorfer



INTRODUCTION

This guide will assist you in removing the display of your device. You'll need to be extra careful when removing the glass screen from your device.

TOOLS:

[Anti-Static Wrist Strap](#) (1)
[Phillips #00 Screwdriver](#) (1)
[Phillips #0 Screwdriver](#) (1)
[Heavy-Duty Spudger](#) (1)
[iFixit Opening Tool](#) (1)

PARTS:

[Toshiba Satellite L55t-B5271 Screen](#) (1)
[Toshiba Satellite L55t-B5271 LED LCD Display](#) (1)

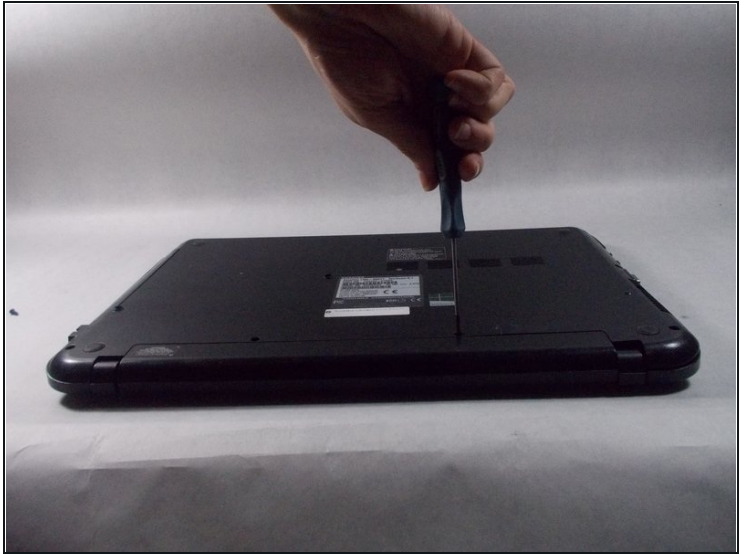
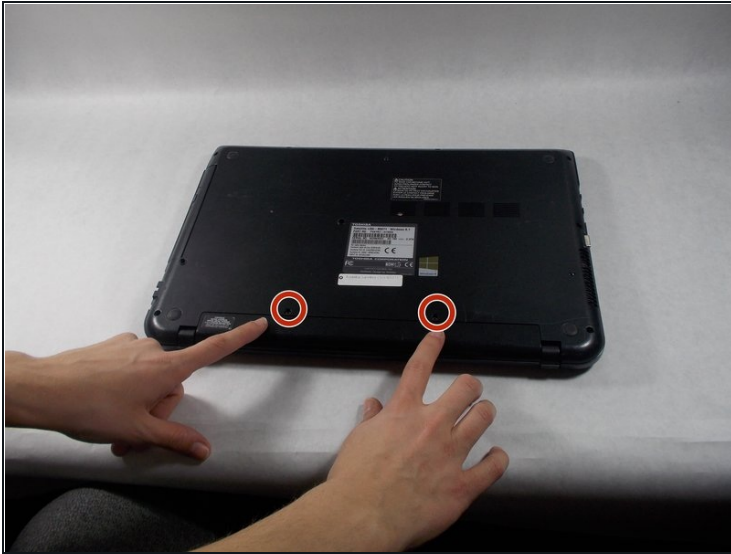
Step 1 — Battery



 Make sure you turn the laptop off first.

- Close the laptop lid and flip it over so that Toshiba logo is facing down.

Step 2



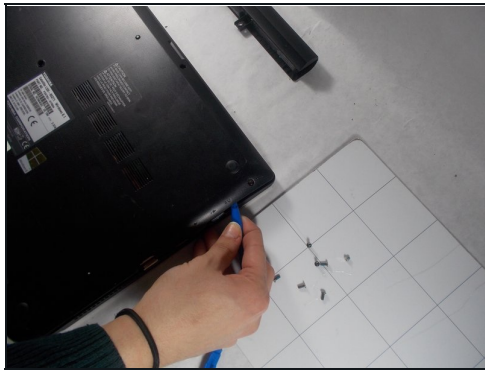
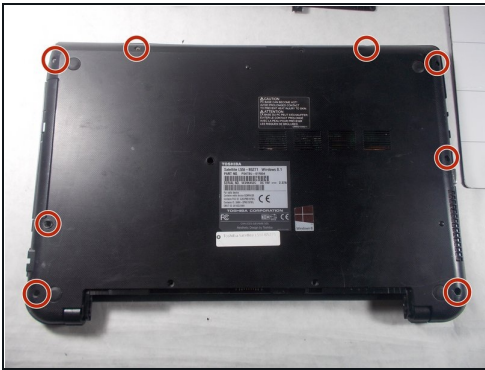
- Remove the two 6.5 mm Phillips head screws indicated using a Phillips #00 screw driver.

Step 3



- Once the screws are removed, slide the battery pack out of the computer.

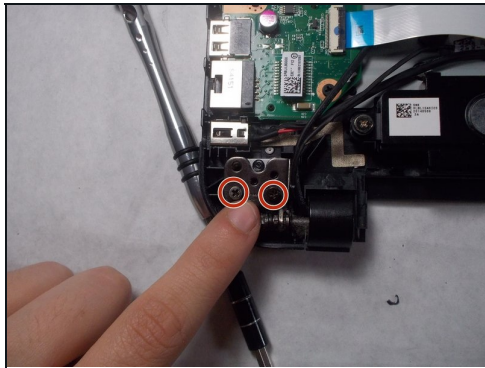
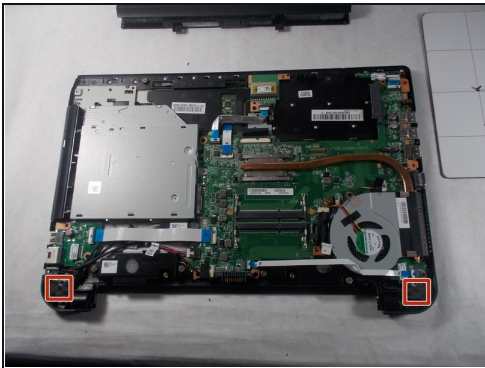
Step 4 — Back Panel



- Remove all 6.5 mm Philips head screws on the back cover of the laptop with a Philips #00 screwdriver.
- Use the plastic opening tool to remove the back cover from the laptop.

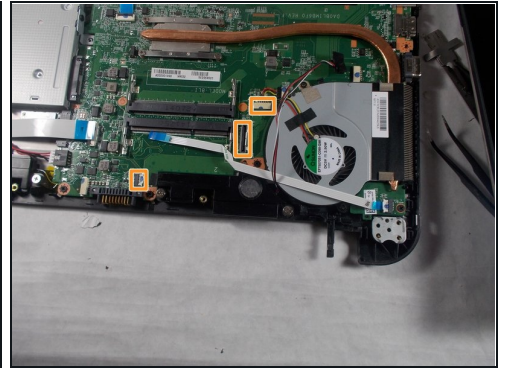
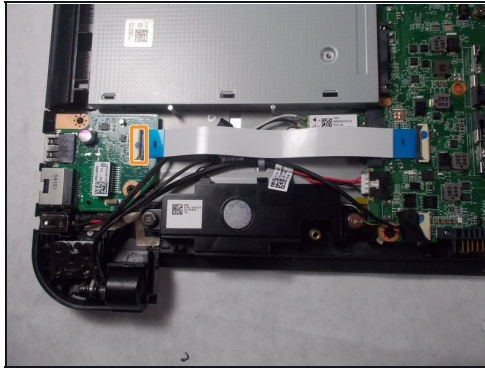
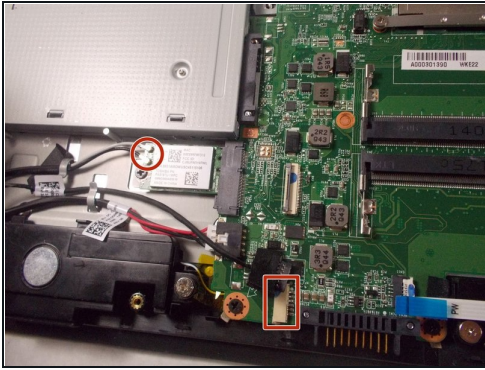
⚠ Be aware that static discharge can cause damage to sensitive electrical components within the computer. To avoid this you can wear an [anti-static wrist strap](#).

Step 5 — Screen



- Unscrew the four 6mm screws from each of the laptop hinges using a Philips head #00 screwdriver.

Step 6



- Disconnect connect the ribbon marked in red.
- Disconnect all ribbons and cables marked in orange.

Step 7



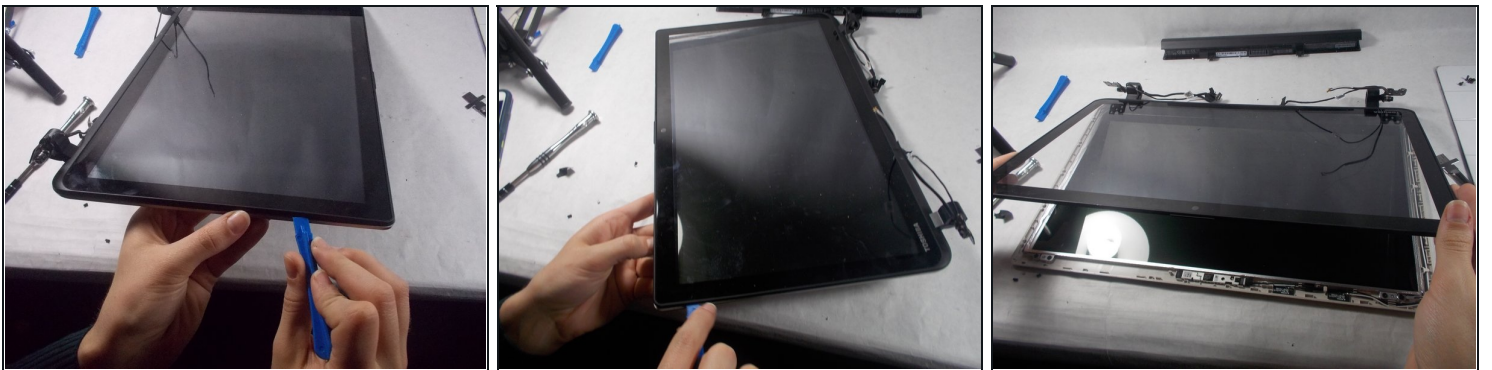
- Flip your laptop back to the front.
- Lift up the screen cover.

Step 8



- Gently pull the screen to disconnect the monitor from the hinges.

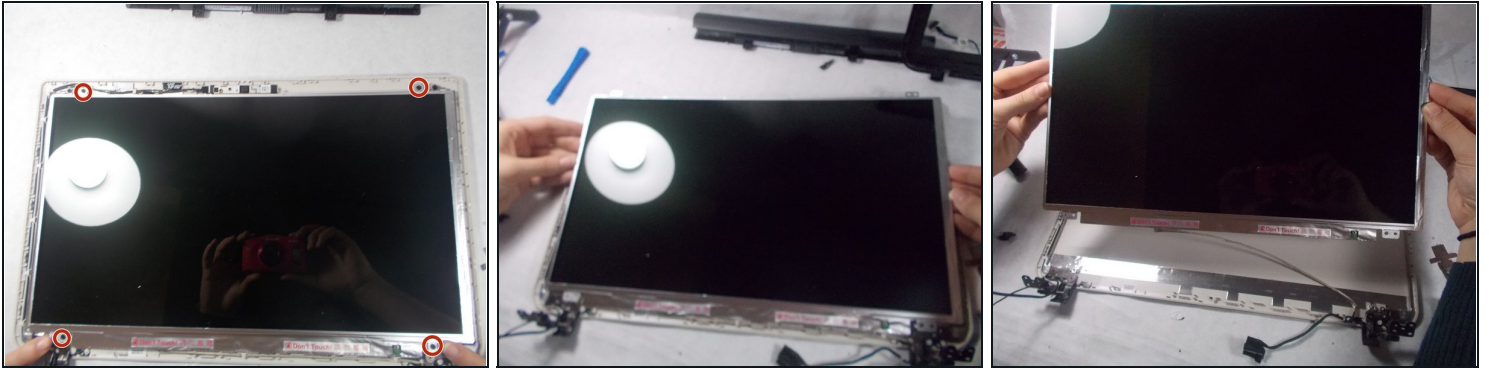
Step 9



- Use the plastic opening tool to pry the plastic covering off of the monitor.

⚠ Be careful not to break the glass, as this can cause injury.

Step 10



- Remove the four 3mm Phillips head screws with a Phillips #00 screwdriver.
- Gently remove the screen from the device.

To reassemble your device, follow these instructions in reverse order.