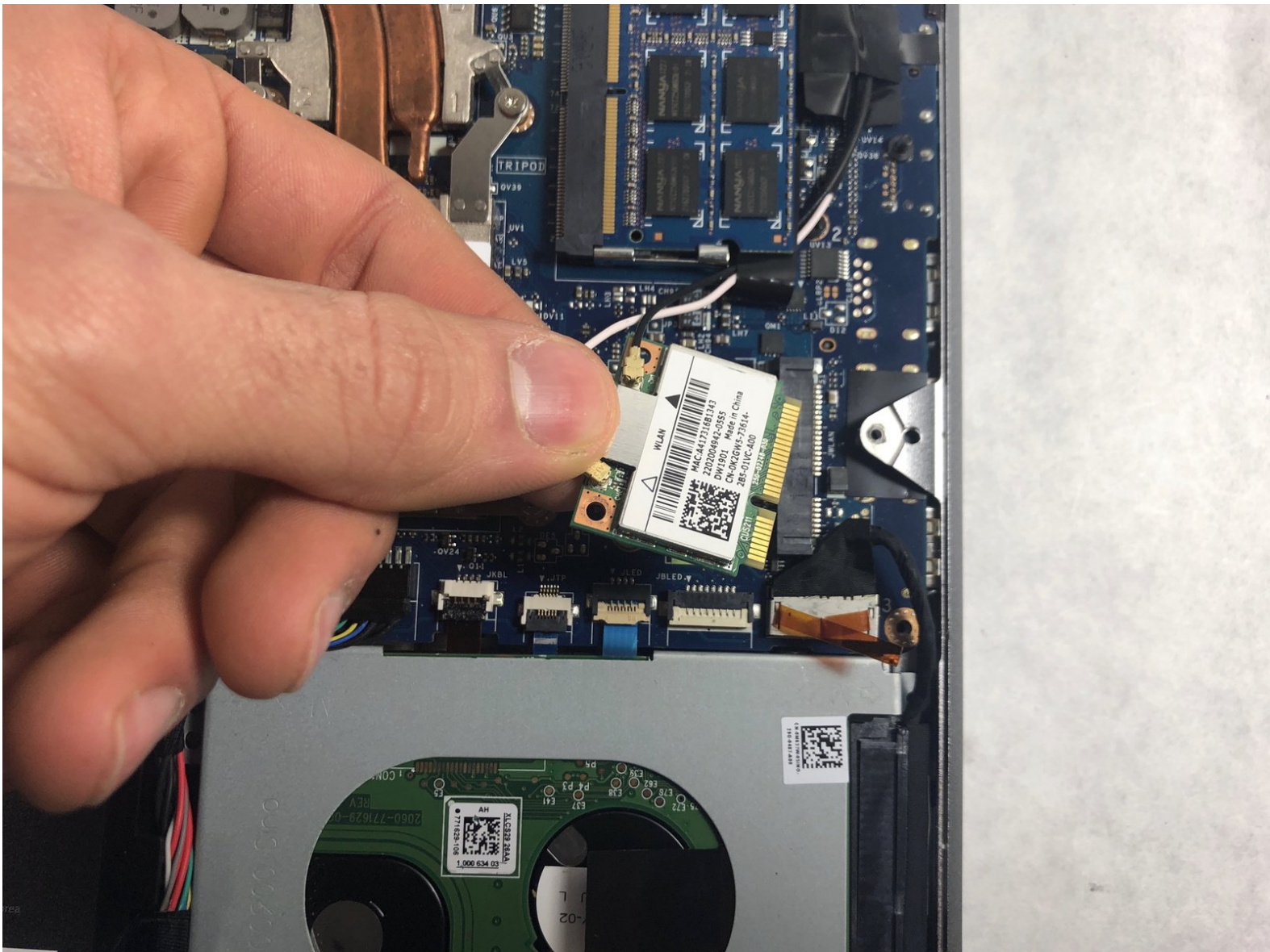




Dell XPS 15 L521X WiFi Card Replacement

This is the replacement guide for the Dell XPS L521X Wifi Card.

Written By: SHELDON SANTOS



INTRODUCTION

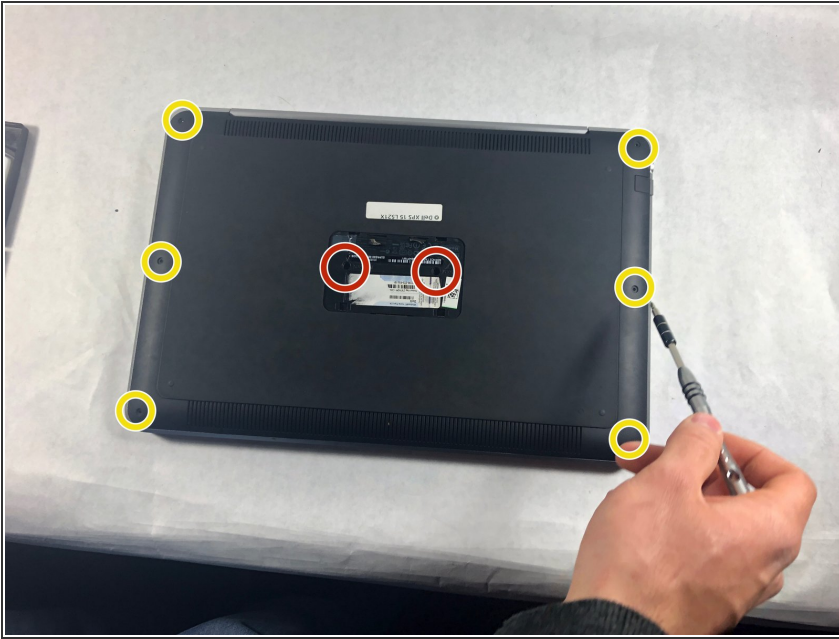
This guide will help you replace the Wifi card on your Dell XPS. The Wifi card is known to fail in the Dell XPS, so this easy repair should fix that. This guide will only require you to remove one screw, and pull the Wifi Card out of place.



TOOLS:

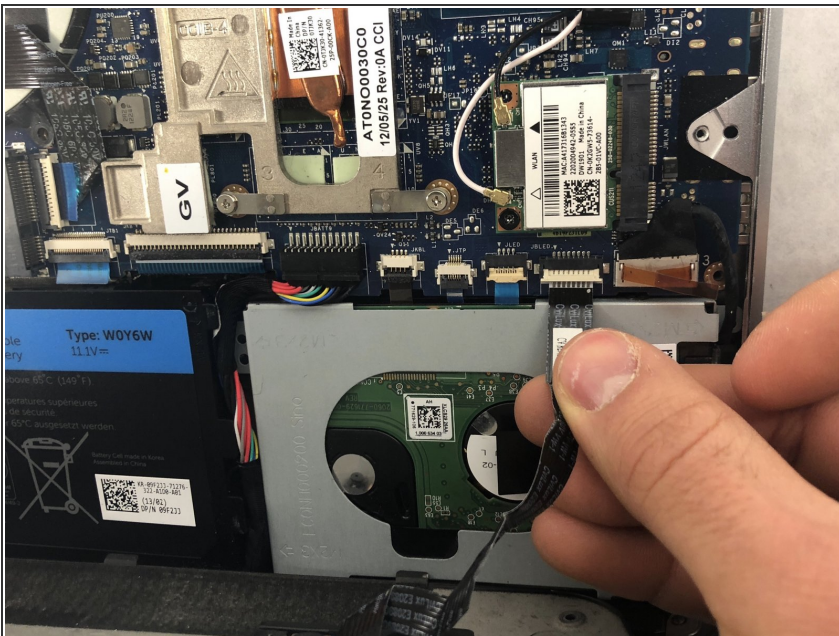
- [Phillips #0 Screwdriver](#) (1)
 - [T5 Torx Screwdriver](#) (1)
-

Step 1 — Back Panel



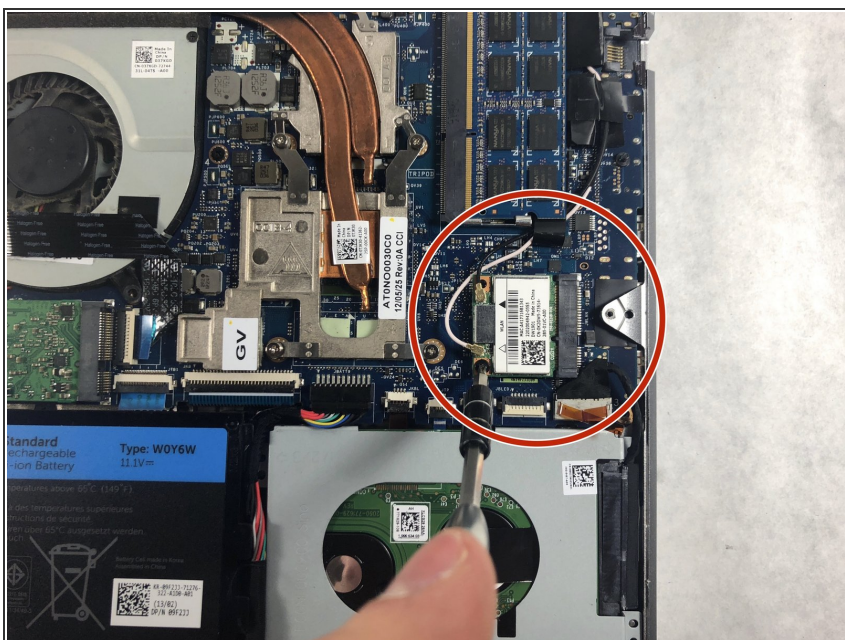
- Find and remove the two .3cm torx head screws using a T5 screwdriver.
- Find and remove the six Phillips head .3cm screws using a Phillips #0 screwdriver.

Step 2



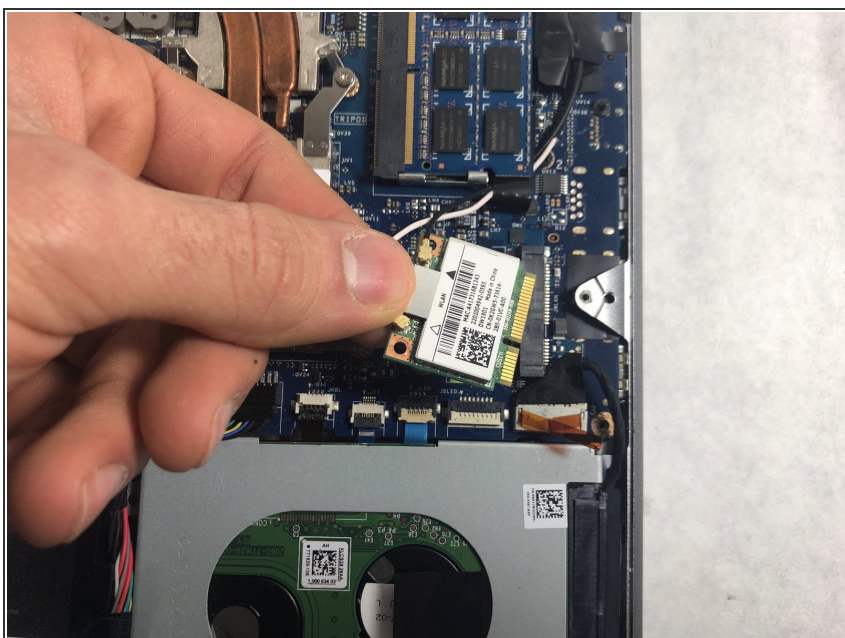
- Unplug the battery indicator.

Step 3 — WiFi Card



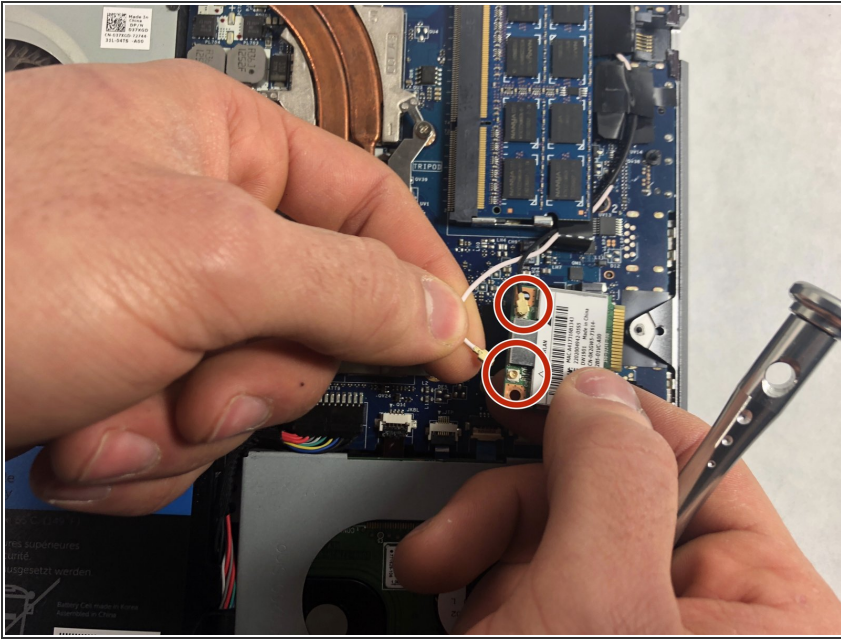
- Find the .3cm Phillips head screw holding the WiFi Card in place and remove it.

Step 4



- Gently pull the WiFi card out of its place.

Step 5



- Gently tug on the two wires connected to the Wifi card

To reassemble your device, follow these instructions in reverse order.