



Cuisinart CHW-12 Power Cord Replacement

How to replace a Cuisinart CHW-12 faulty power cord.

Written By: Trevor Aspinall



INTRODUCTION

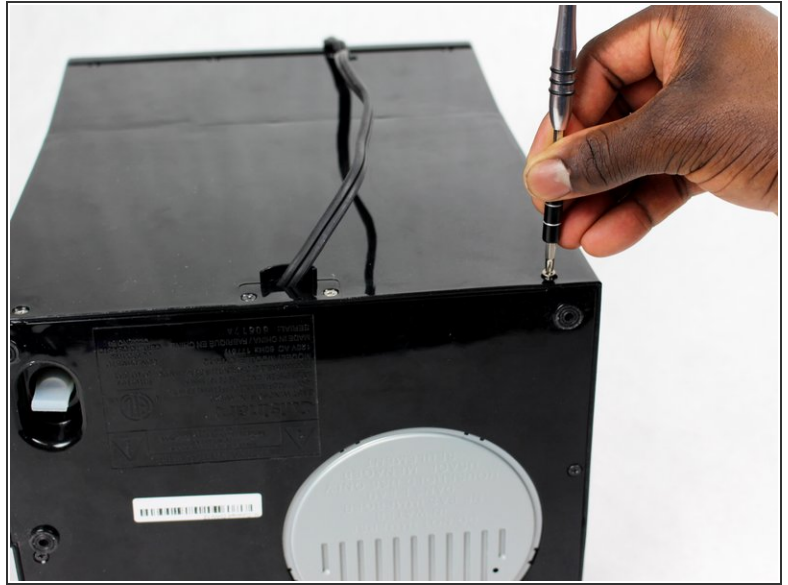
Having problems powering-up your Cuisinart coffee-maker? Follow these instructions on how to replace Cuisinart CHW-12 power cord. This repair will only fix power issues directly related to the power cord. If the cord has been disconnected from the circuit board or severed a new power cord will be required to fix the issue. To successfully complete this guide you will need to know how to solder.



TOOLS:

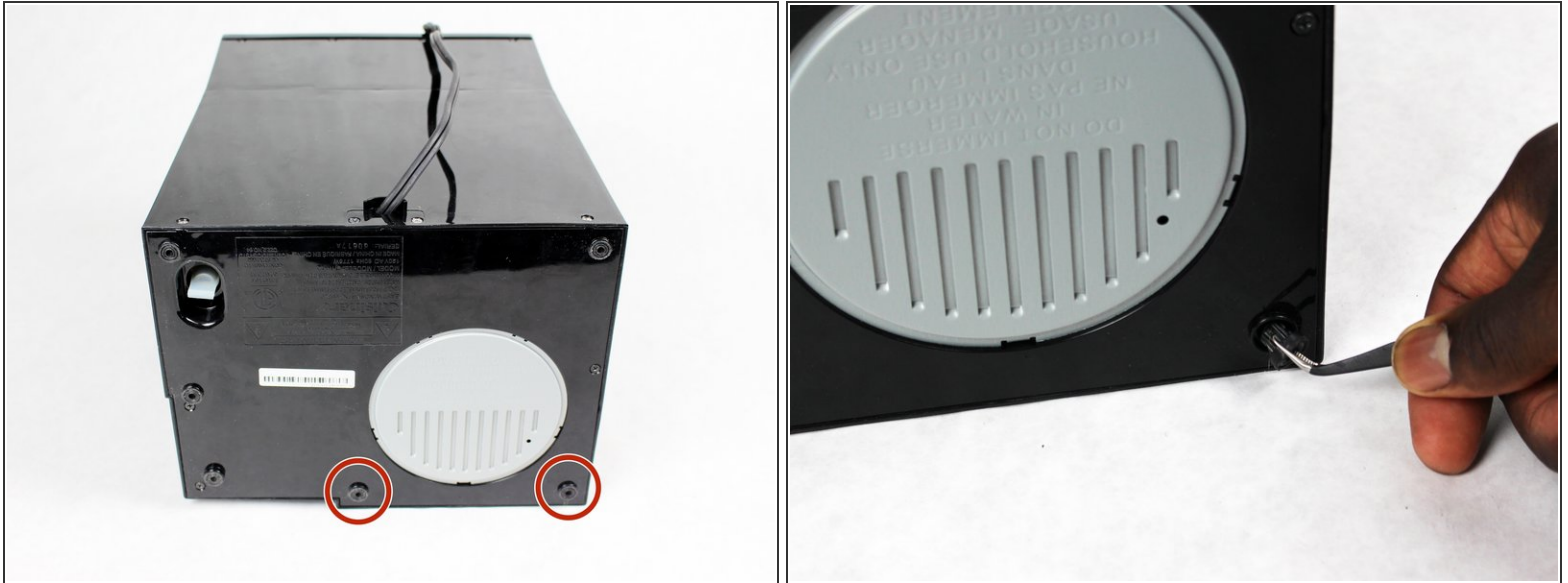
- [Phillips #1 Screwdriver](#) (1)
 - [Tweezers](#) (1)
 - [Soldering Iron](#) (1)
-

Step 1 — Power Cord



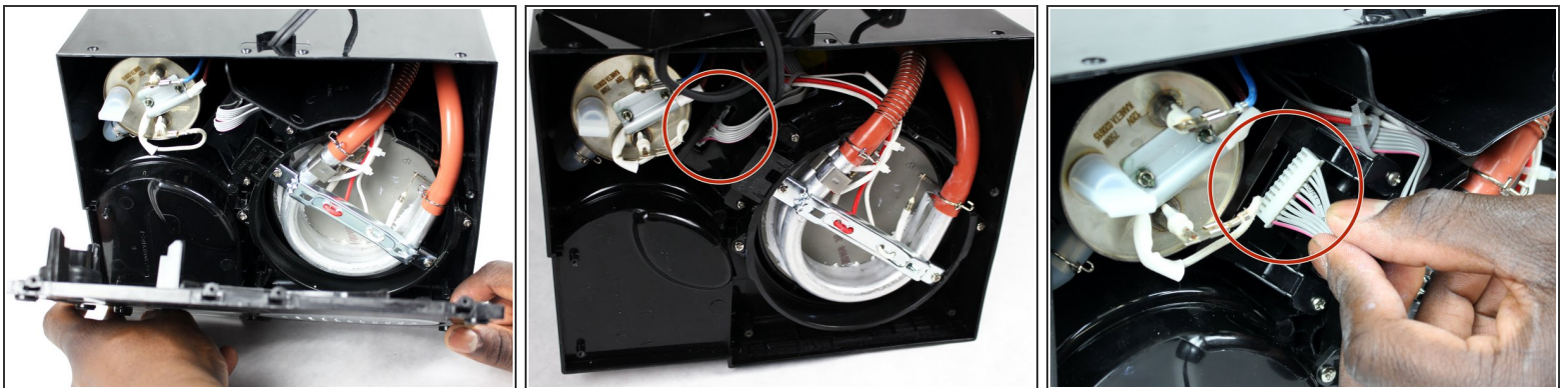
- Unplug the coffee-maker from the power source.
- Use a Phillips head screwdriver to remove the four 7mm screws from the back and the three 8mm screws from the bottom. This will release the bottom cover.

Step 2



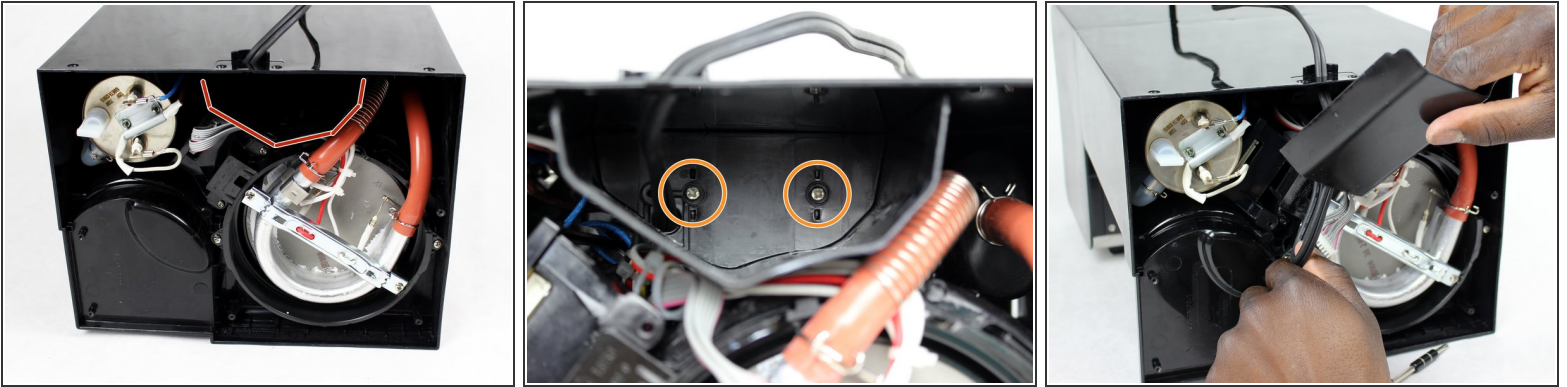
- Use tweezers to remove the two rubber feet marked within the provided pictures.
- Remove both 8mm Phillips head screws found within the holes where the feet were just removed.

Step 3



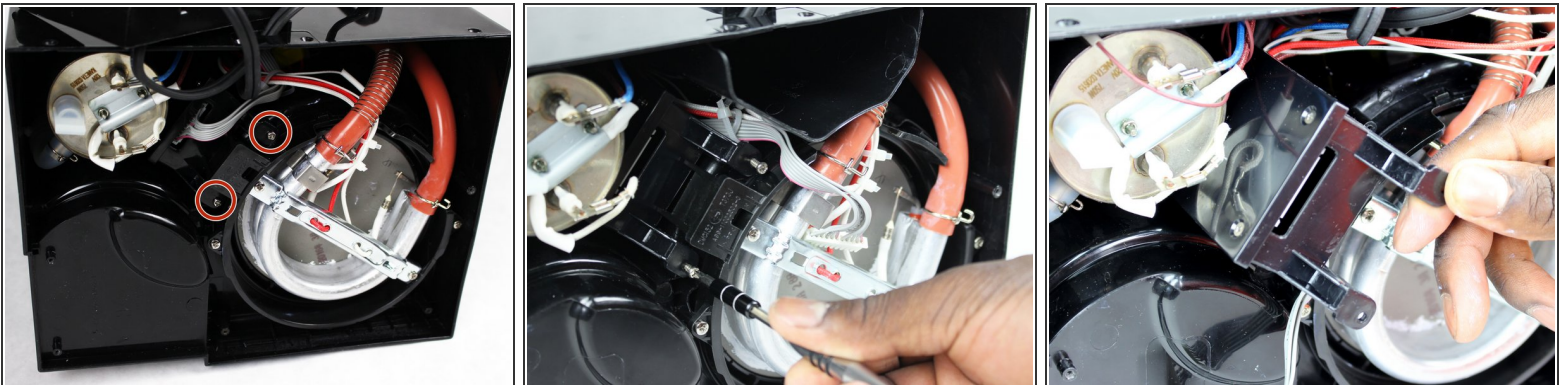
- Carefully pull the cover off the bottom of the coffee maker. This will give you access to the inside of the coffee maker.
- Pull the gray ribbon cable strait out of the black containment box.

Step 4



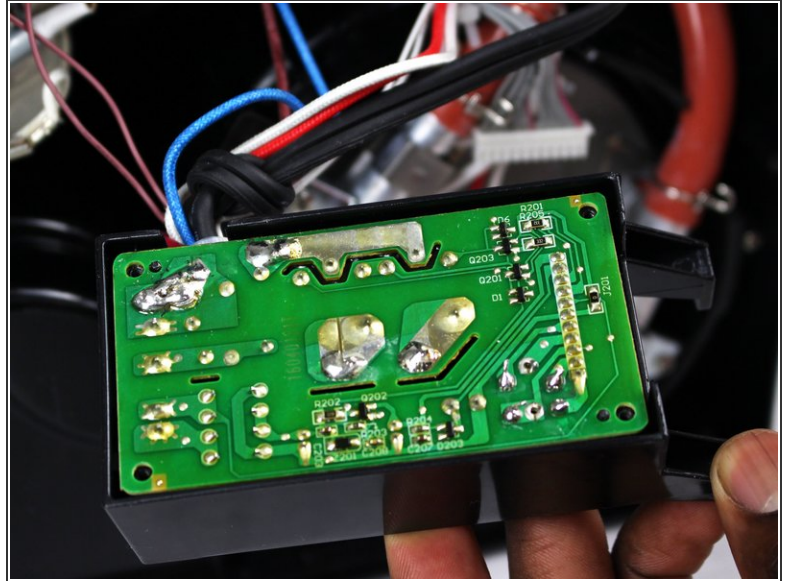
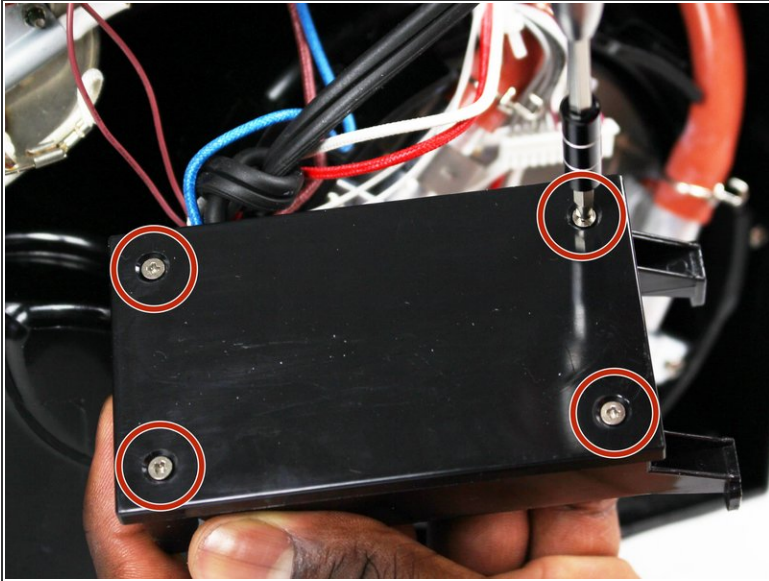
- Locate the Phillips head screws holding the highlighted plastic shield in place.
- Remove the two 14mm screws with a Phillips head screwdriver.
- Carefully slide the shield out of place along the power cord and set it aside.

Step 5



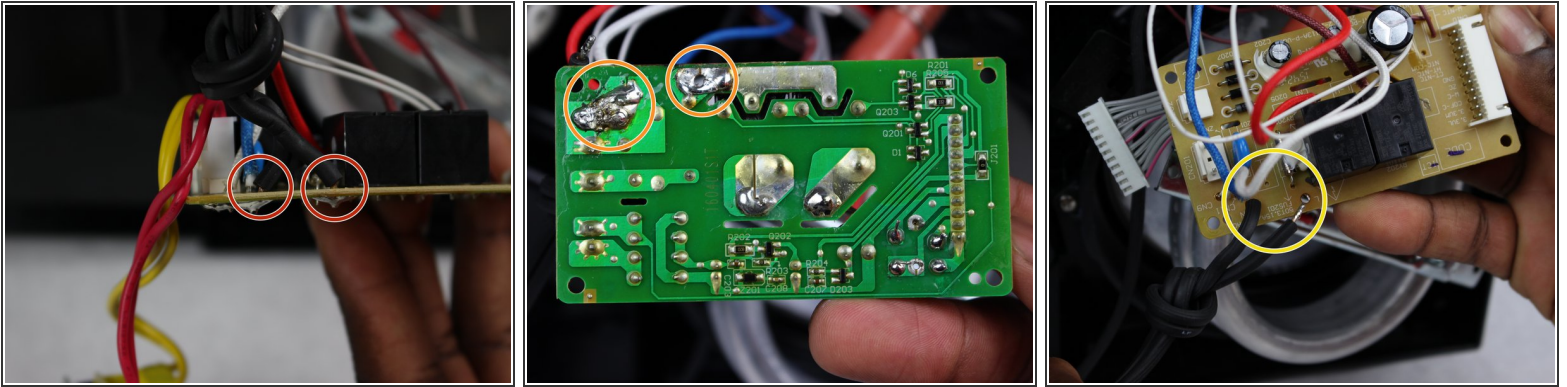
- Remove the two 14mm Phillips head screws securing the plastic containment box.
- Pull the plastic containment box straight out of the coffee maker.

Step 6



- Remove the four 11mm Phillips head screws in each corner of the plastic containment box.
- Pull the top from the plastic housing.

Step 7



- Pull the circuit board out of the containment box.
 - Locate the power cable connection point on the circuit board.
 - Desolder the power cable wires connected to the board.
- ⚠ Solder iron can cause burns if used improperly.
- Replace the power cable with the corresponding wires of the new power cable.

To reassemble your device, follow these instructions in reverse order.