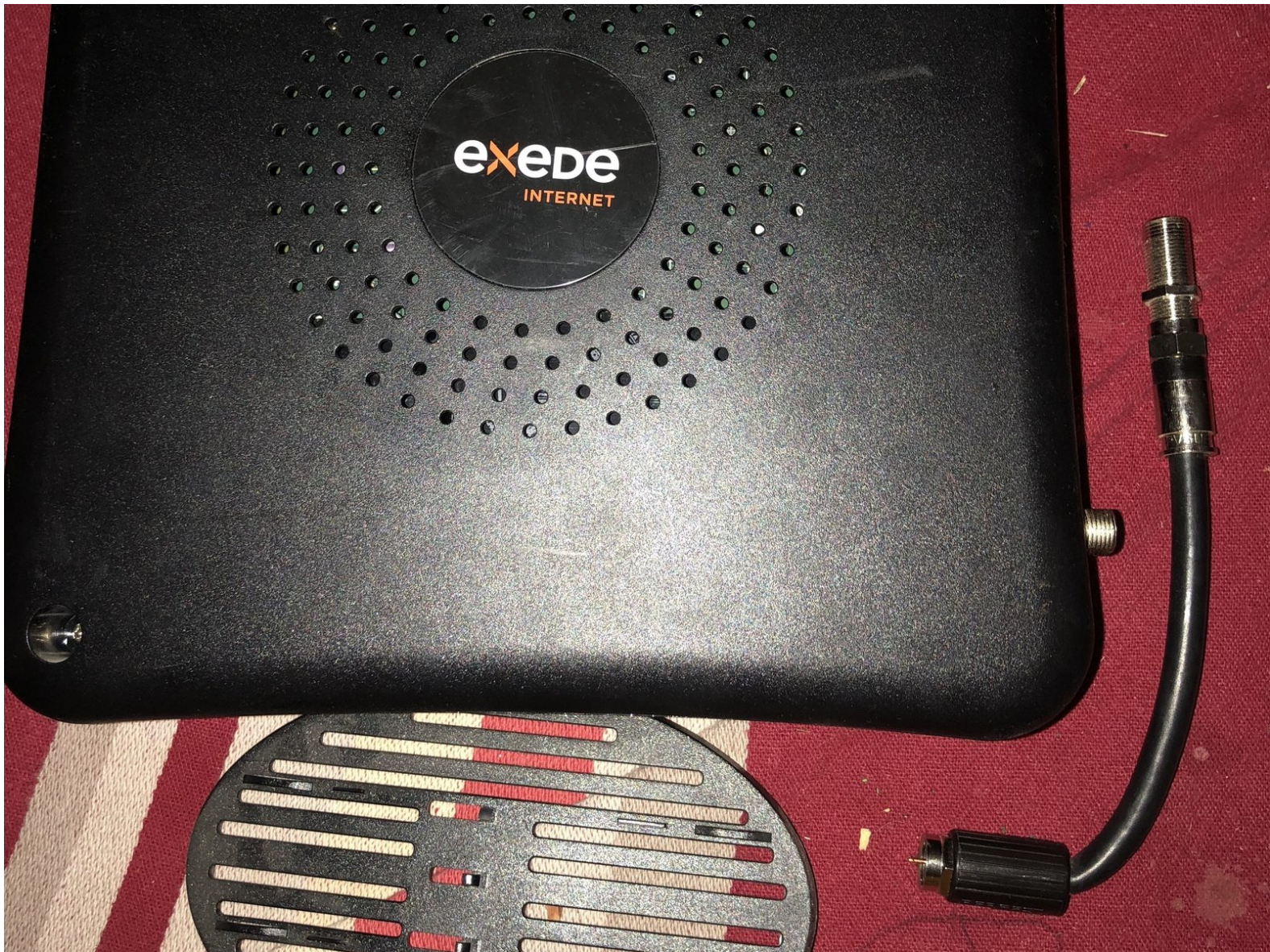




# exede internet router Teardown

learn whats inside an exede internet router.

Written By: riley pacello



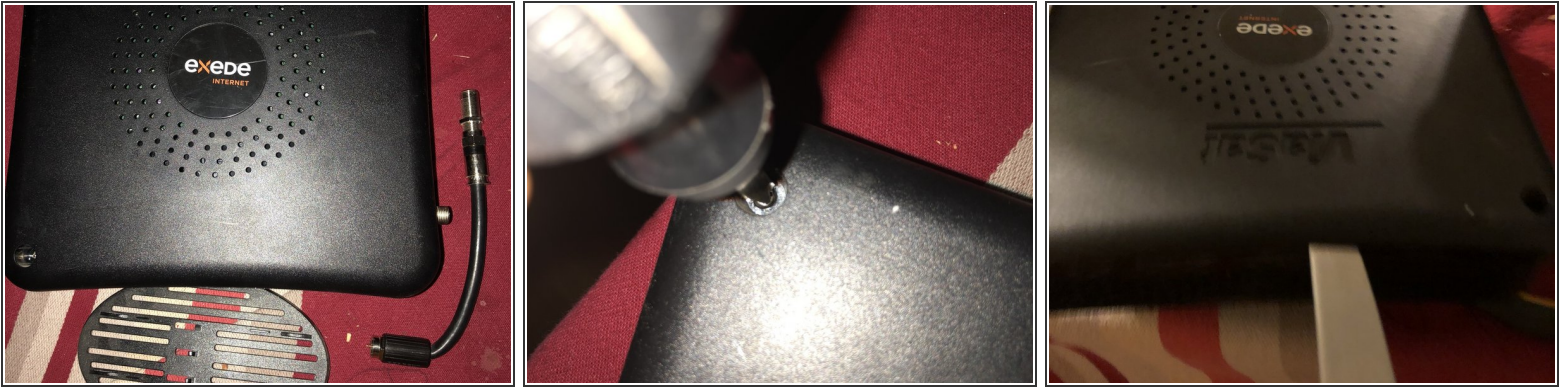


## TOOLS:

- [Essential Electronics Toolkit](#) (1)
-

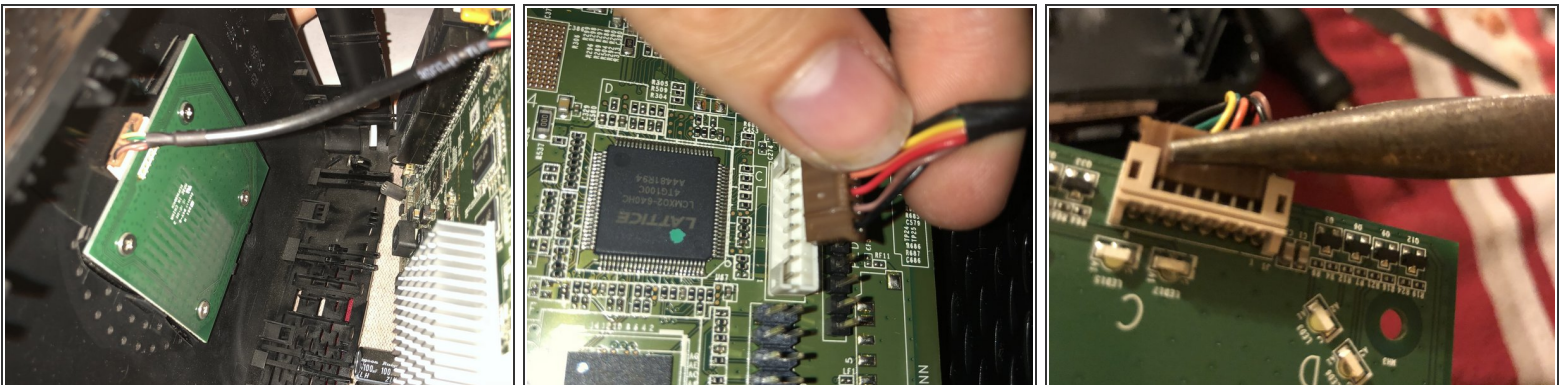


## Step 1 — Remove the outer plastic



- Remove 2 screws on the back of the router (.7 cm Philips flat head screw)
- Then use any objects that will slide into the crack between the front and back. Slide the object up the sides of the plastic cover rocking the objects back and forth to click the plastic out of place. (when putting back together just apply pressure to click back into place.)

## Step 2 — Unplug internal cord from socket



- There is a plug connecting the two boards together, carefully unplug the cord from both boards. you can use your fingers or if that doesn't work needle nose pliers might.
- Be careful not to damage the cord.

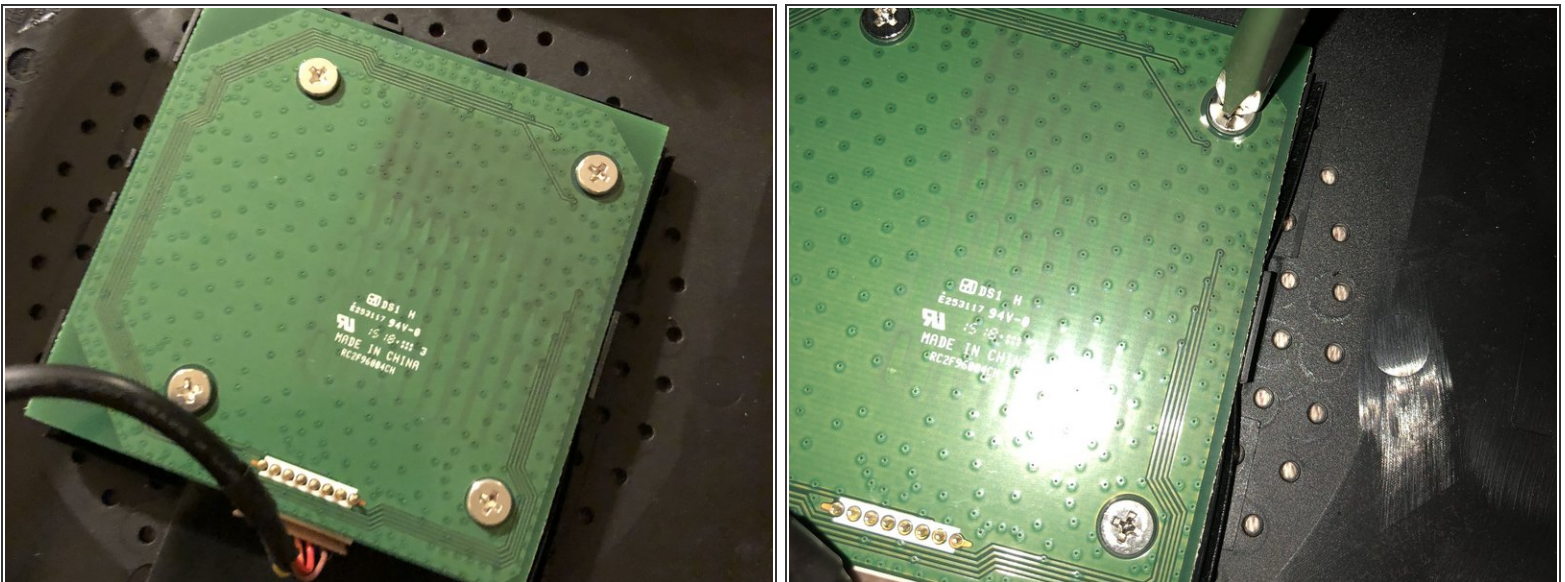


### Step 3 — unscrew board from plastic cover



- Unscrew the board from the cover. There are a total of 7 screws.(3 -.7 cm Philips flat head screws, 4-.4 cm pan head Philips screws)
- Make sure when putting the router back together you put the screws back in the same place or you will damage the circuit board.

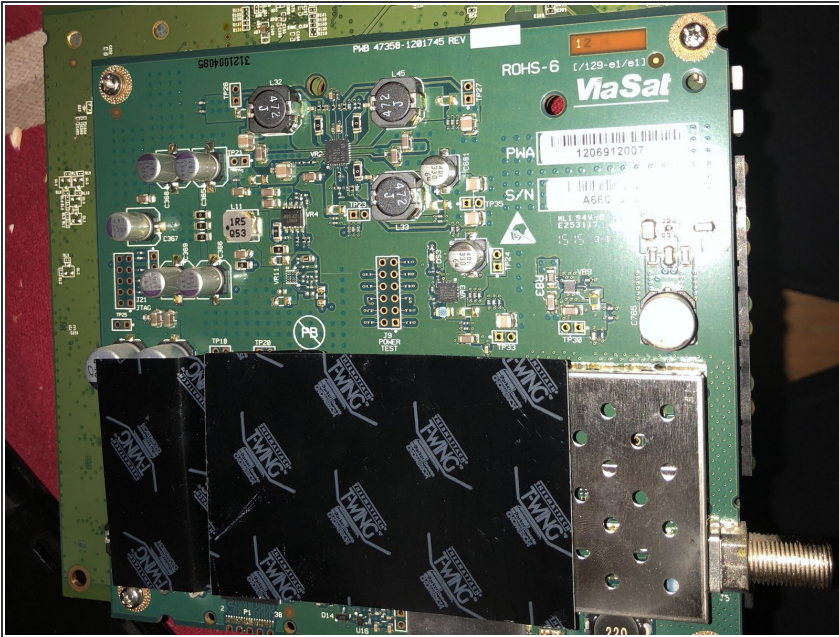
### Step 4 — Remove other circuit board



- Unscrew board from plastic cover. There's a total of 4- .7 cm flat hear Philips screws.

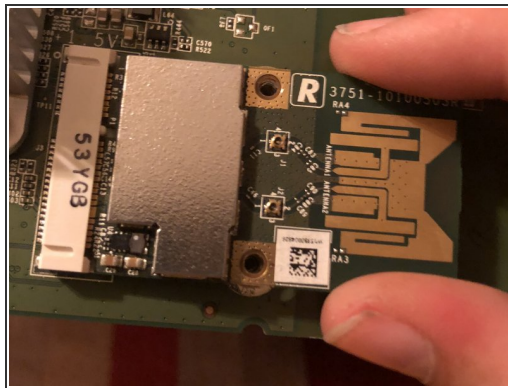
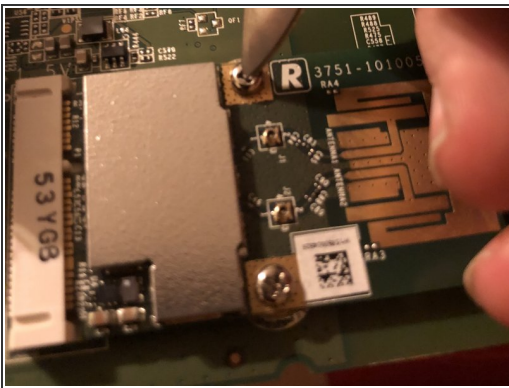


## Step 5 — Unscrewing back of board



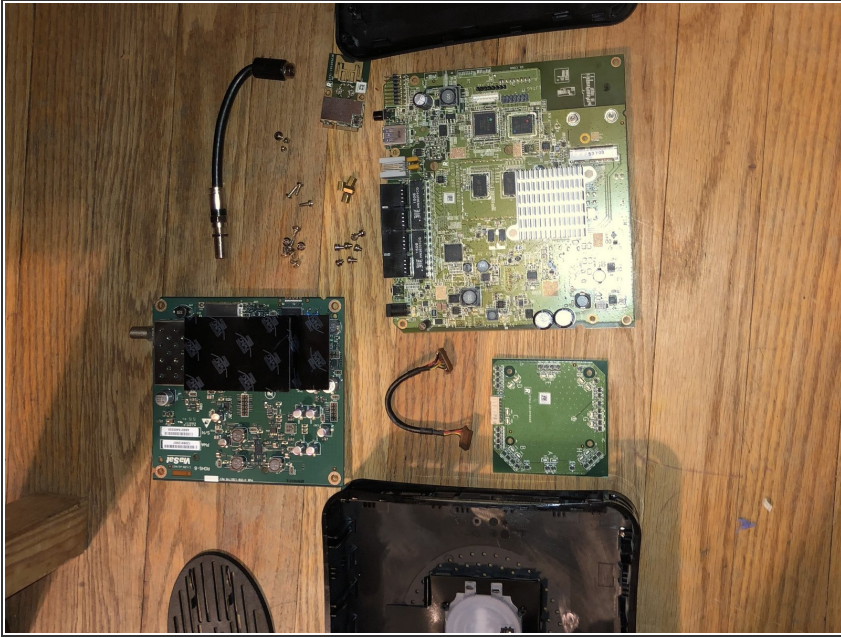
- There are four screws connecting the two boards together. ( 4- .4 cm pan head screws with washers). There are also 4- .6 cm hexagonal spacers that divide the boards. These are held in place by the screws.
- The boards are connected by foam, gently pull apart to separate.

## Step 6 — Disconnect wireless card from board



- Two .1 cm pan head Philips head screws connect the wireless card to the circuit board.
- Gently pull the card away to disconnect it.

## Step 7 — You're done



- good job!