



# HP Elitebook 2740p Hard Drive Replacement

Simple guide to replace a damaged hard drive or upgrade the existing one for a larger hard drive disk or solid state drive.

Written By: Cameron Whittle



---

## INTRODUCTION

The computers hard drive is where all of its data is stored and kept when the computer is turned off. Upgrading it to a larger or faster HDD or SSD is very important in keeping your computer running properly. This simple guide shows how to easily access the HDD bay within the laptop.



### TOOLS:

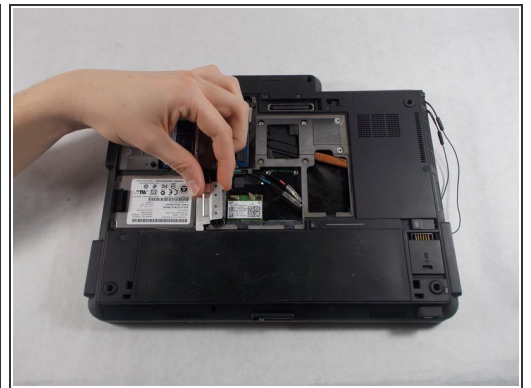
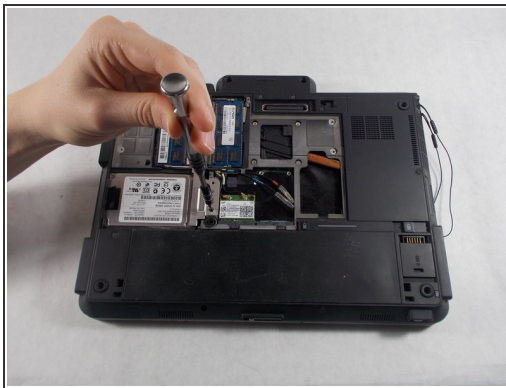
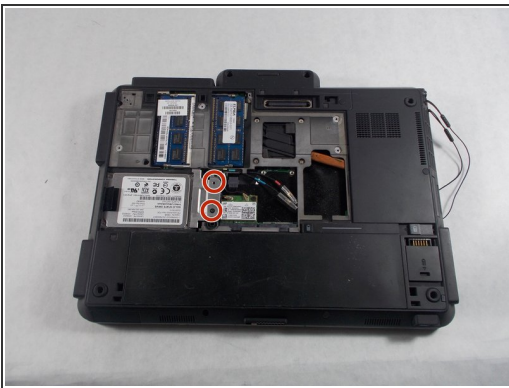
- [Phillips #0 Screwdriver](#) (1)
-

## Step 1 — Hard Drive



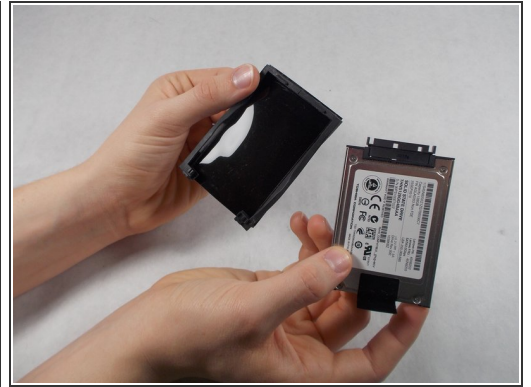
- Place the laptop face down in front of you.
- Use a Phillips #0 screwdriver to remove the three 3 mm screws from the back of the case.
- Remove the back panel.

## Step 2



- Use a Phillips #0 screwdriver to remove the two 3 mm screws from the small metal HDD bracket.
- Lift up on the small bracket and pull it off.

## Step 3



- Pull out the hard drive and the small rubber sleigh that holds it.
- Pull the rubber sleigh off of the hard drive.

To reassemble your device, follow these instructions in reverse order.