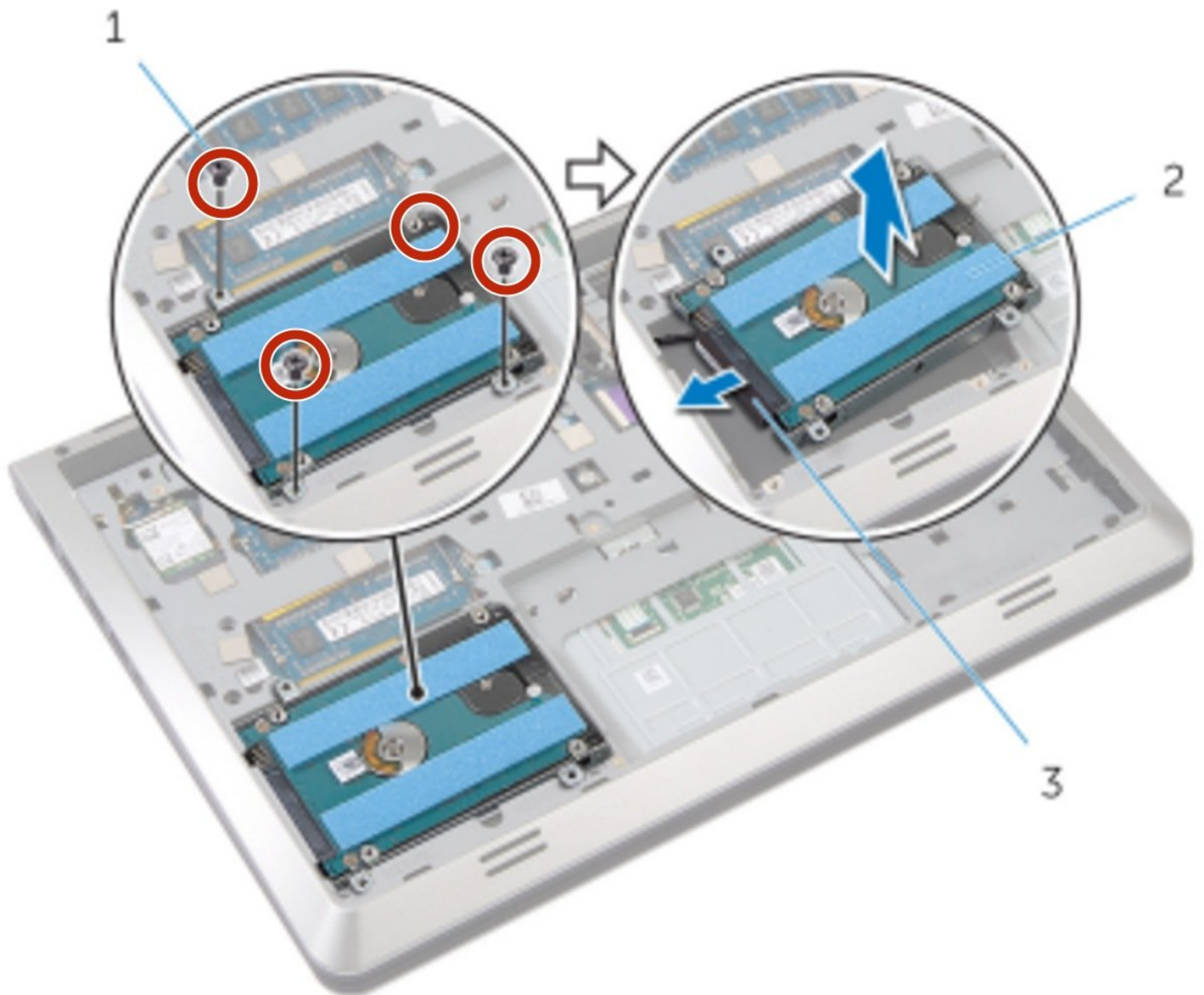




# Dell Inspiron 14 5443 Hard Drive Replacement

Written By: darrius



---

## INTRODUCTION

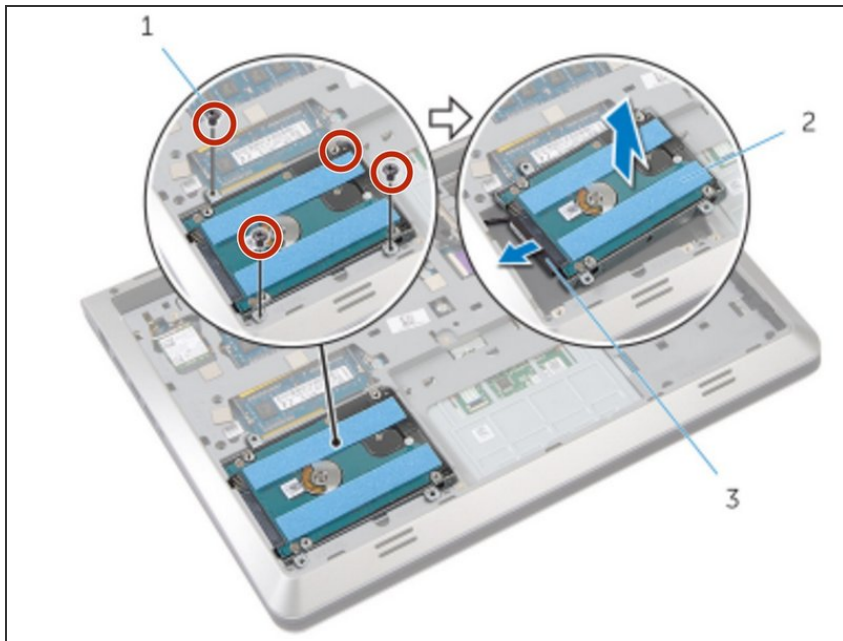
How To remove and replace the Hard Drive.

---

### TOOLS:

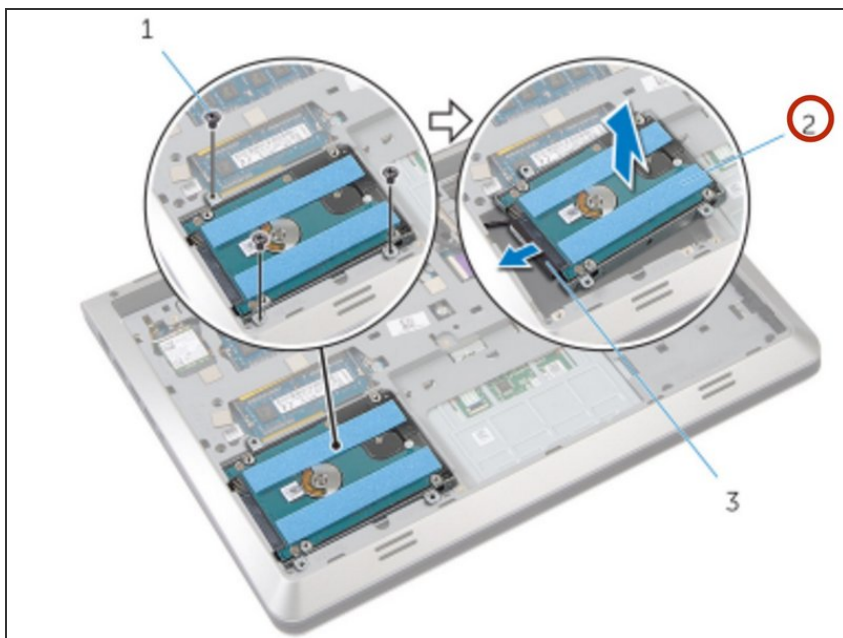
- [Phillips #0 Screwdriver](#) (1)
-

## Step 1 — Removing screws



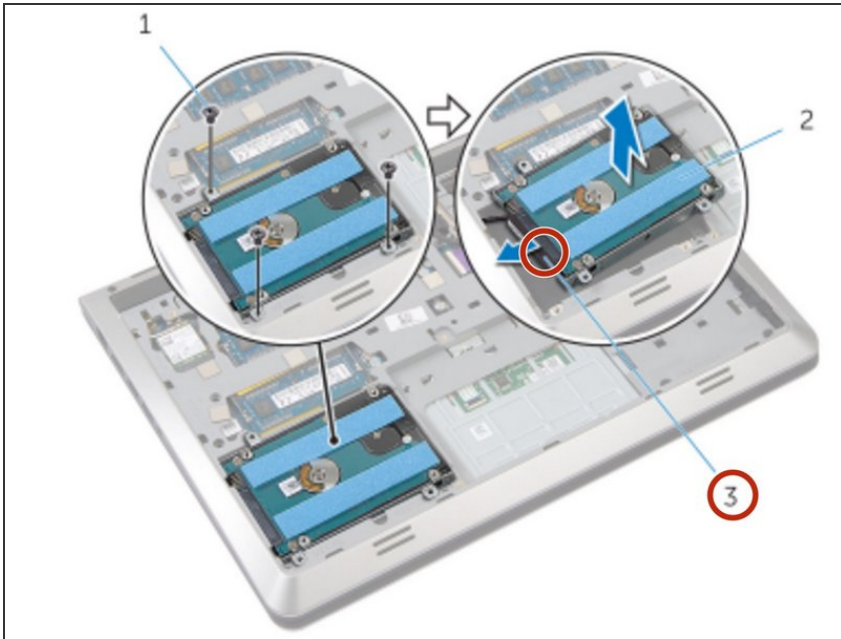
- Remove the screws that secure the hard-drive assembly to the base frame.

## Step 2 — Gently Lift Hard-Drive



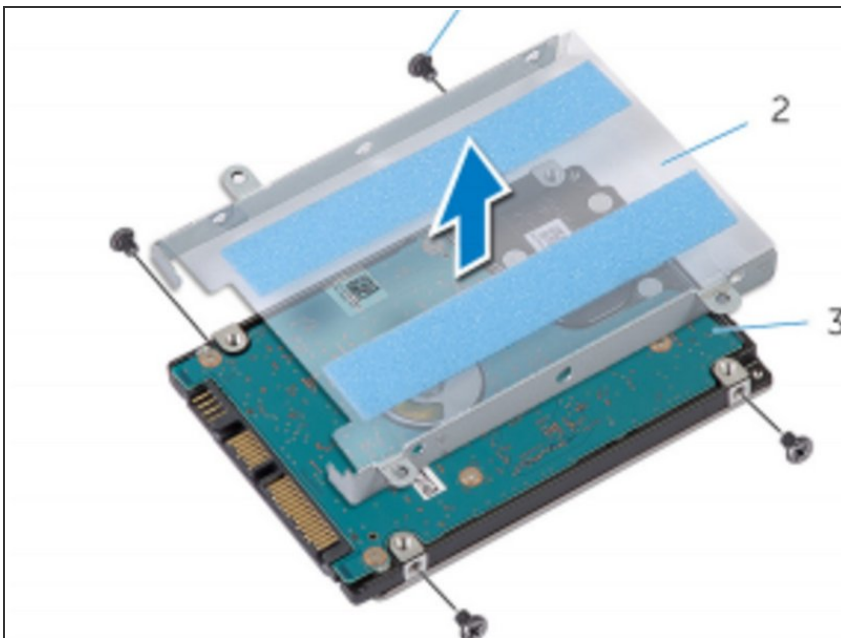
- Gently lift the hard-drive assembly out of the base frame and disconnect the hard-drive cable from the hard drive.

### Step 3 — Removing Screws From Bracket



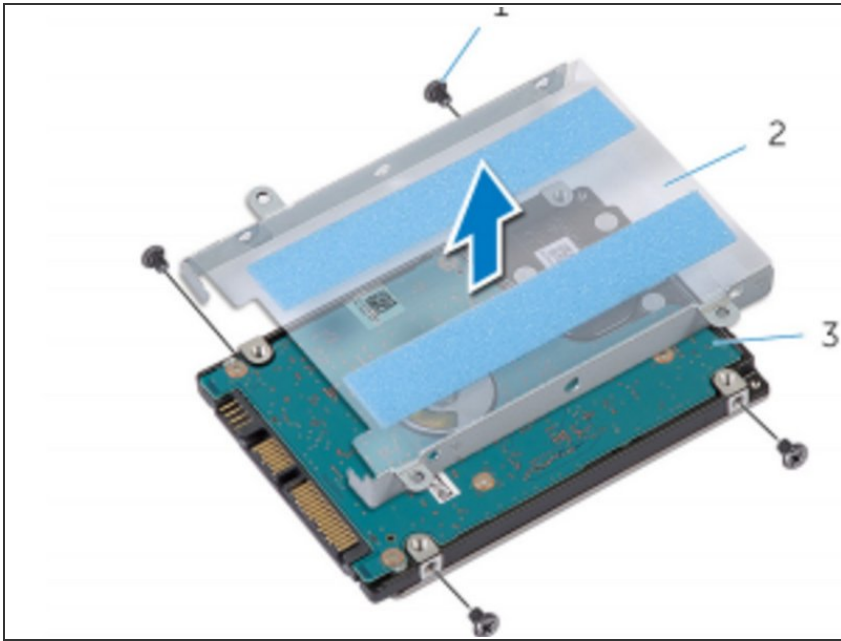
- Remove the screws that secure the hard-drive bracket to the hard drive.

### Step 4 — Lifting Bracket



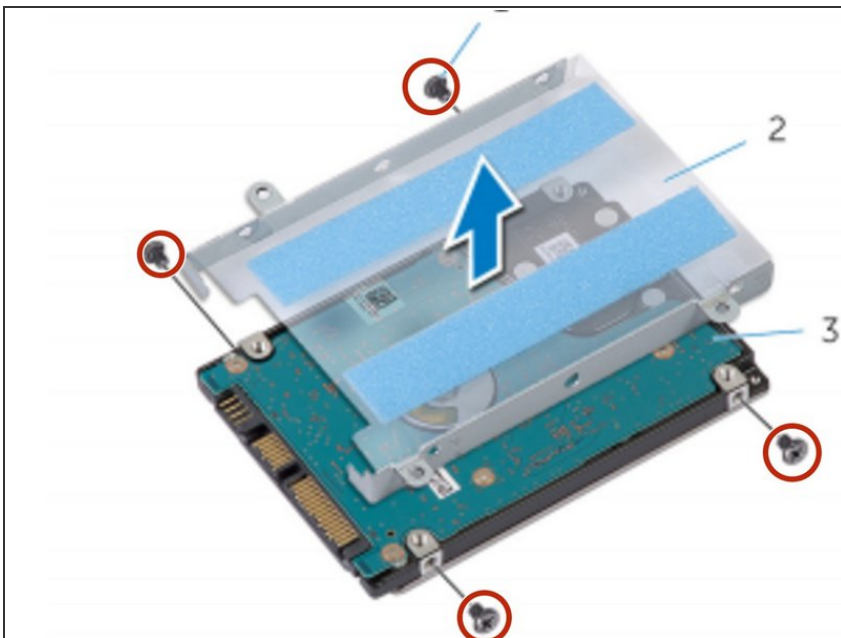
- Lift the hard-drive bracket off the hard drive

## Step 5 — Placing Bracket



- Place the hard-drive bracket on the **NEW** hard drive.

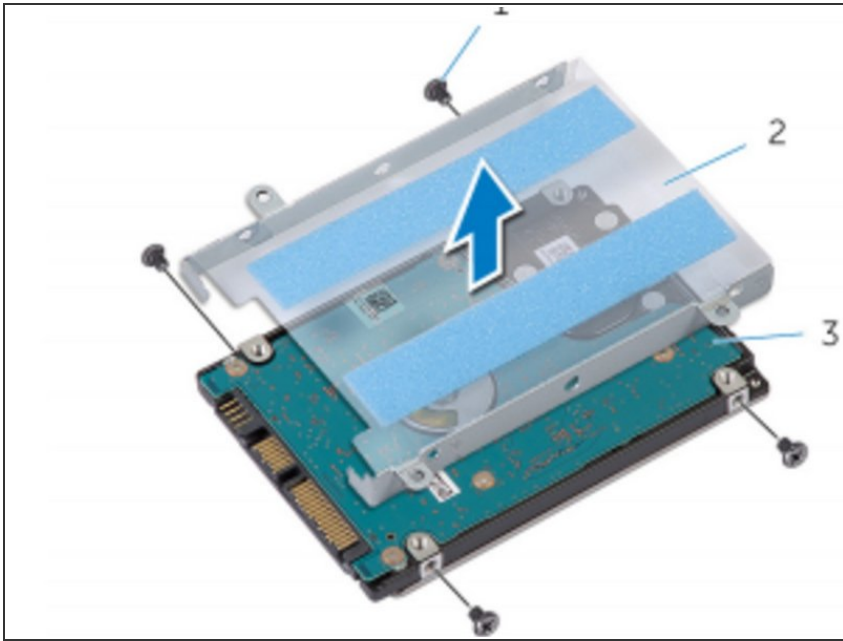
## Step 6 — Aligning the Screws



- Align the screw holes on the hard drive-bracket with the screw holes on the hard drive.

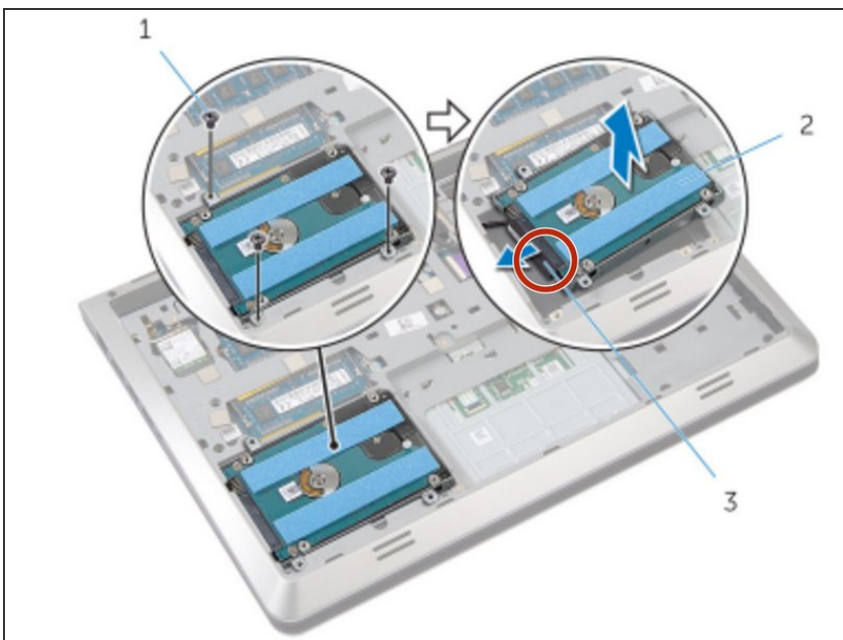


## Step 7 — Replace the Screws



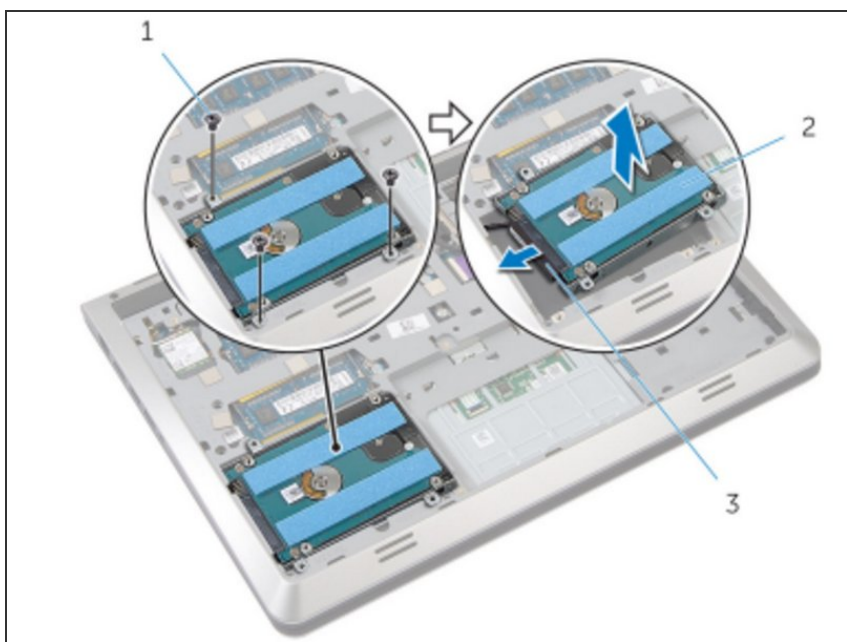
- Replace the screws that secure the hard-drive bracket to the hard drive.

## Step 8 — Connecting Hard-Drive To Cable



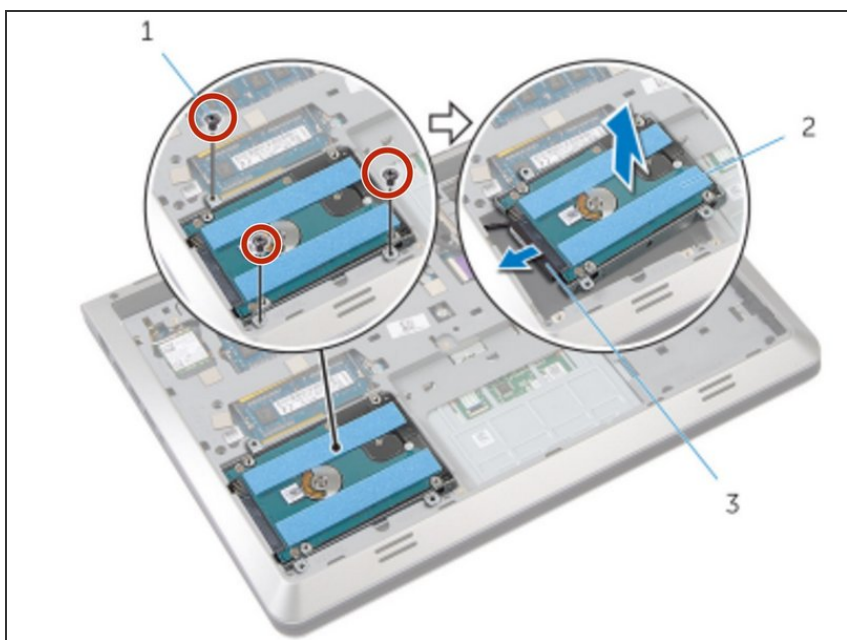
- Connect the hard-drive cable to the hard drive.

## Step 9 — Placing the Hard-Drive



- Place the hard-drive assembly in the base frame and align the screw holes on the hard-drive assembly with the screw holes on the base frame.

## Step 10 — Securing the Screws



- Replace the screws that secure the hard-drive assembly to the base frame.