



Gateway MA7 Hard Drive Replacement

This guide will help you replace the Hard Drive...

Written By: De'Andra Clarke



INTRODUCTION


This guide will help you replace the Hard Drive in your Gateway MA7 laptop. The hard drive for your laptop stores all of your computer's information. If your hard drive is corrupt it will need to be replaced in order for it to turn on. You can also replace the hard drive if you want to have more storage.

TOOLS:

Phillips #0 Screwdriver (1)

Step 1 — Hard Drive



 To prevent injury, make sure the laptop is unplugged and off before removing the battery.

- To unlock the battery slide both switches marked in the picture to the unlocked position, the one on the left marked in pink will need to be held while you remove the battery.

Step 2



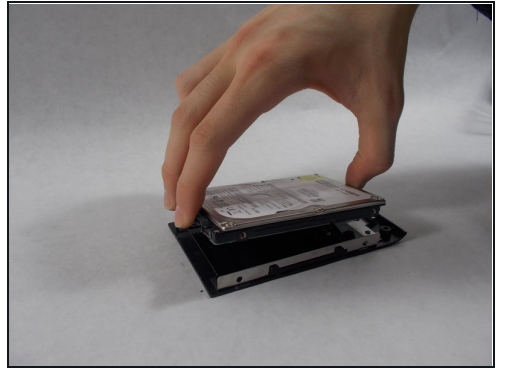
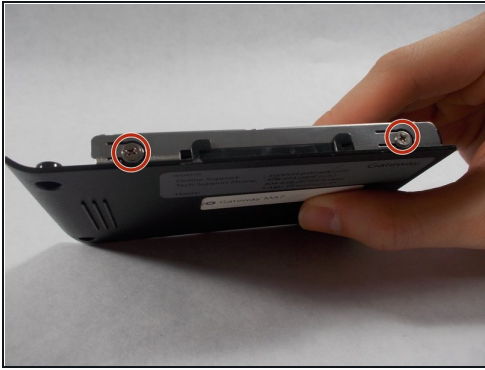
- Remove the two 6 mm Phillips #0 screws from the back of the hard drive cover.

Step 3



- Press down firmly on the hard drive and pull leftwards.

Step 4



- Remove two 4 mm Phillips #0 screws from the plastic hard drive cover.
- Lift the hard drive up from the plastic cover.

To reassemble your device, follow these instructions in reverse order.