



# Gateway MA7 Fan Replacement

In this guide you will remove and replace the fan in your laptop.

Written By: Cameron Sheedy



## INTRODUCTION

In this guide you will learn how to replace the fan for your MA7 laptop. Due to the nature of the component, debris can often get caught in it and cause damage. Your fan may need to be cleaned upon removal or just replaced altogether.



### TOOLS:

- [Phillips #0 Screwdriver](#) (1)




### PARTS:

- [Thermal Paste](#) (1)

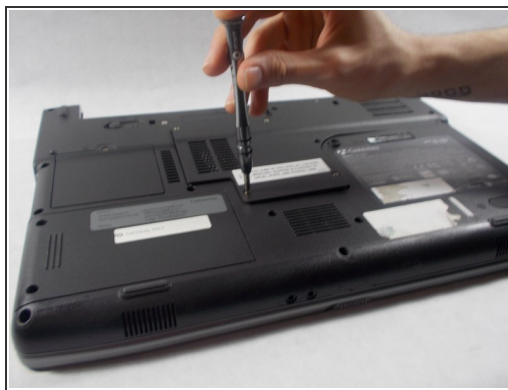
## Step 1 — Fan



 Before starting this replacement, make sure the device is powered off and the battery is removed.

- This particular device is missing the battery.
- To remove your battery, slide the plastic tabs on the back of the laptop and pull the battery out of the device.

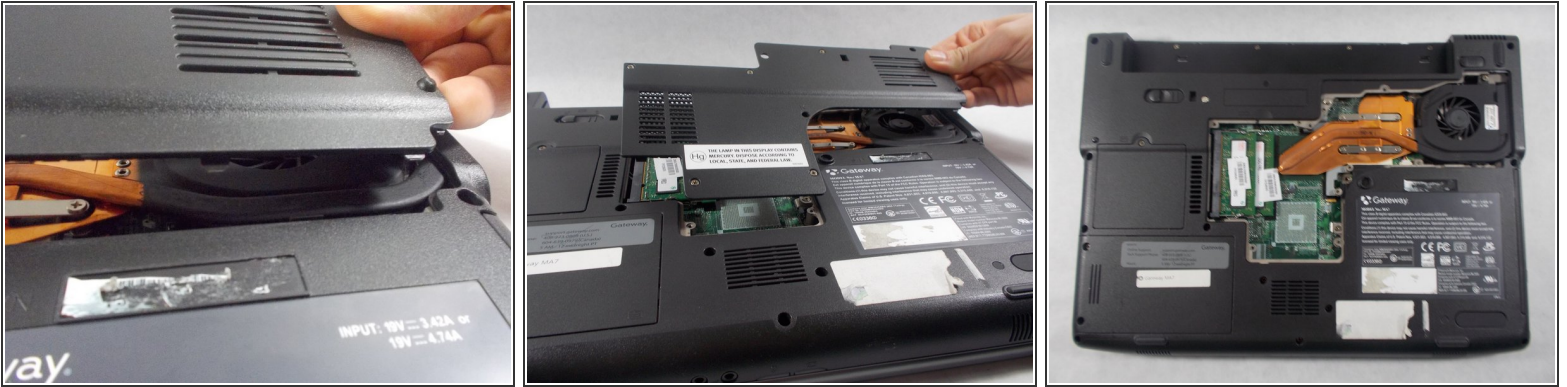
## Step 2



- Remove the seven 6mm screws from the back panel with a Phillips #0 screwdriver.

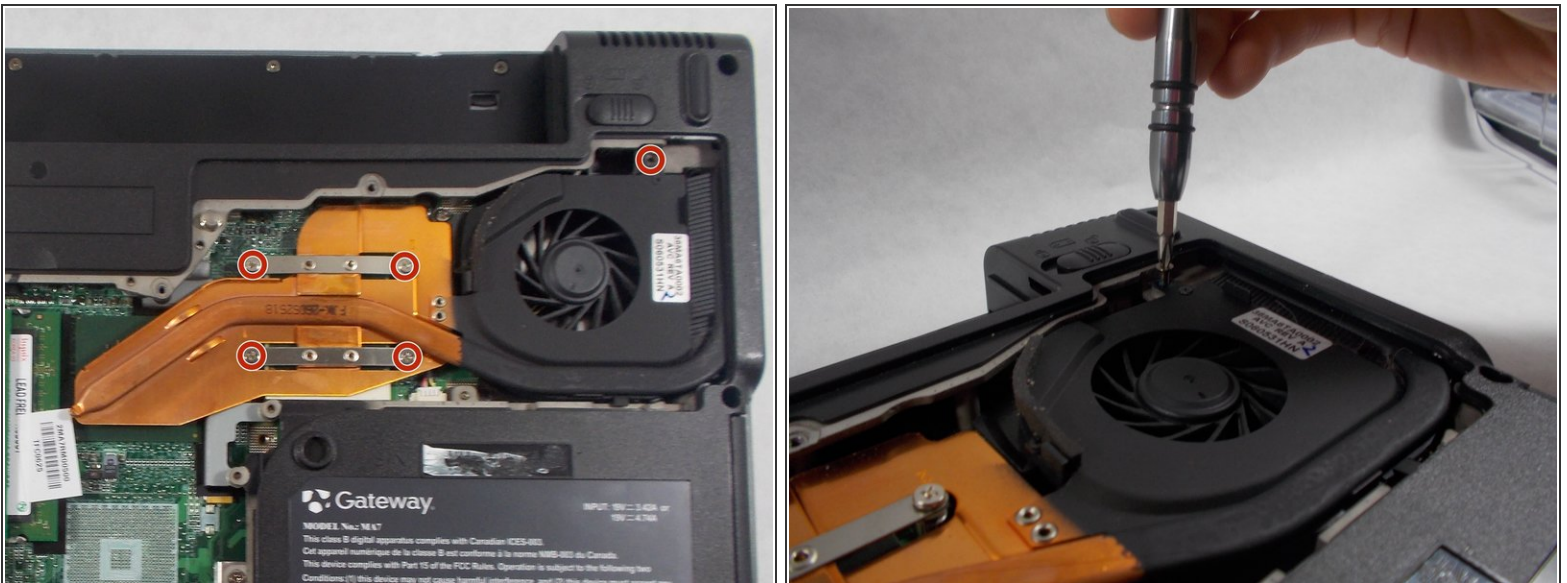


## Step 3



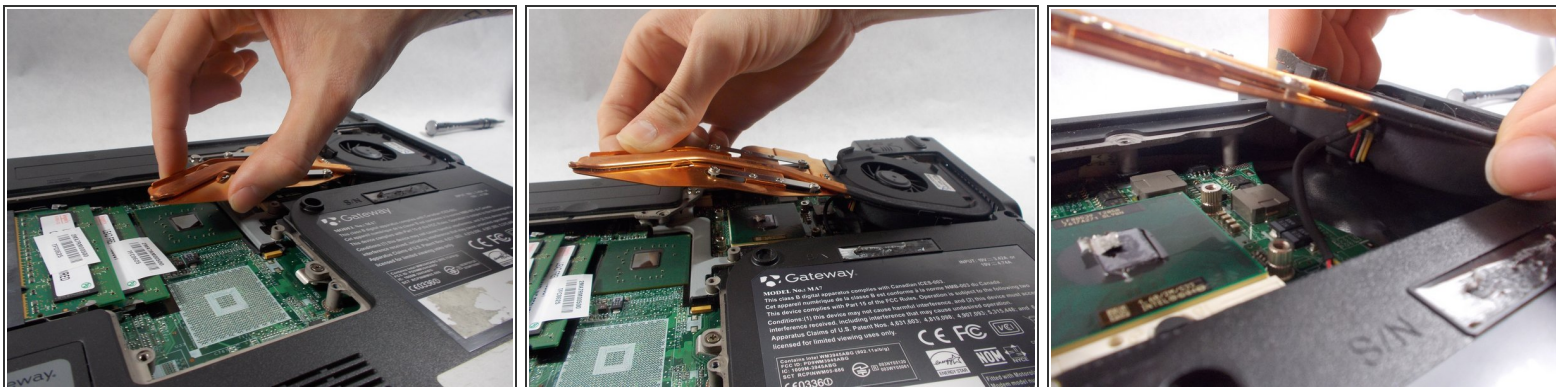
- Pull upwards on the top of the plastic panel to remove it.
- With the exception of the screw marked "K", all of the screws will remain connected to the plastic piece.

## Step 4



- Remove the five 6 mm screws with a Phillips #0 screw driver to detach the fan and cooling unit from the motherboard.
- i* The four screws on the silver metal bands of the fan will not come off of the actual component.

## Step 5

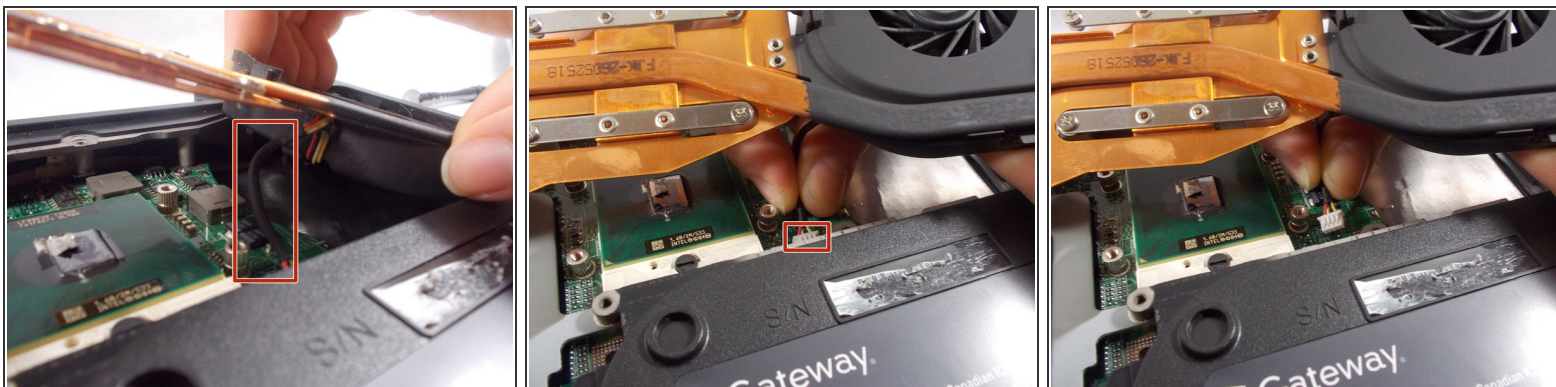


- Lifting from the left side of the fan, start to pull the fan off of the motherboard.

⚠ Be sure not to pull the fan all the way off the motherboard yet. Before it can be completely removed the cables must be disconnected.

⚠ There may be thermal paste adhering the fan to the motherboard. Be sure to lift the fan slowly and gently.

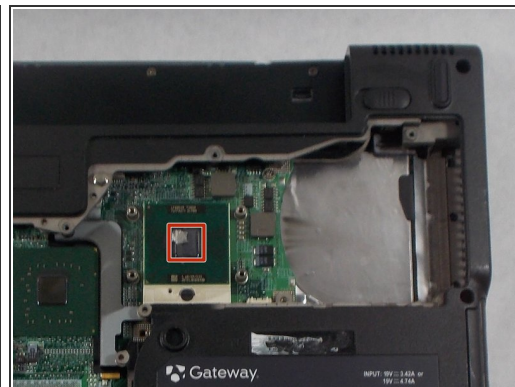
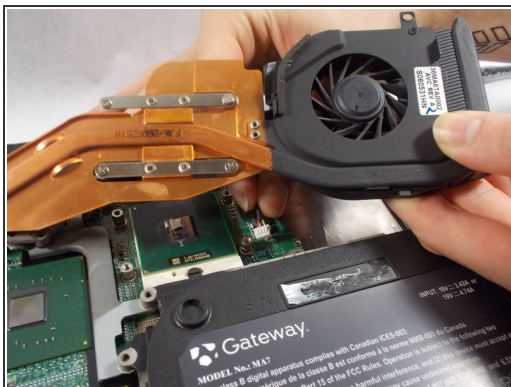
## Step 6



- In order to properly remove the fan, disconnect the cable that is attached to the motherboard.
- Gently grasp the connecting cable from under the fan and pull it out of the socket on the motherboard to disconnect it.



## Step 7



- With the screws removed and the cable disconnected, just lift the fan off the motherboard to remove it.
- When you replace the fan, be sure to reapply thermal paste here.

To reassemble your device, follow these instructions in reverse order.