



# HP Pavilion dv7t-7000 Wi-Fi Card Replacement

A guide to show how to replace the Wi-Fi card in the HP Pavilion dv7t-7000.

Written By: Eric Easley



---

# INTRODUCTION

A guide to show how to replace the Wi-Fi card in the HP Pavilion dv7t-7000.



## TOOLS:

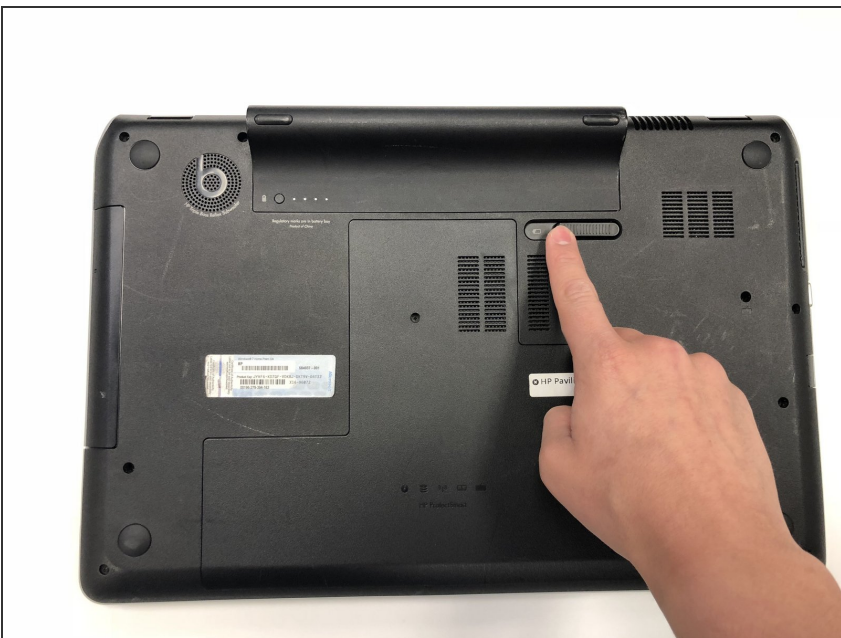
- [Phillips #00 Screwdriver](#) (1)
  - [Spudger](#) (1)
-

## Step 1 — Battery



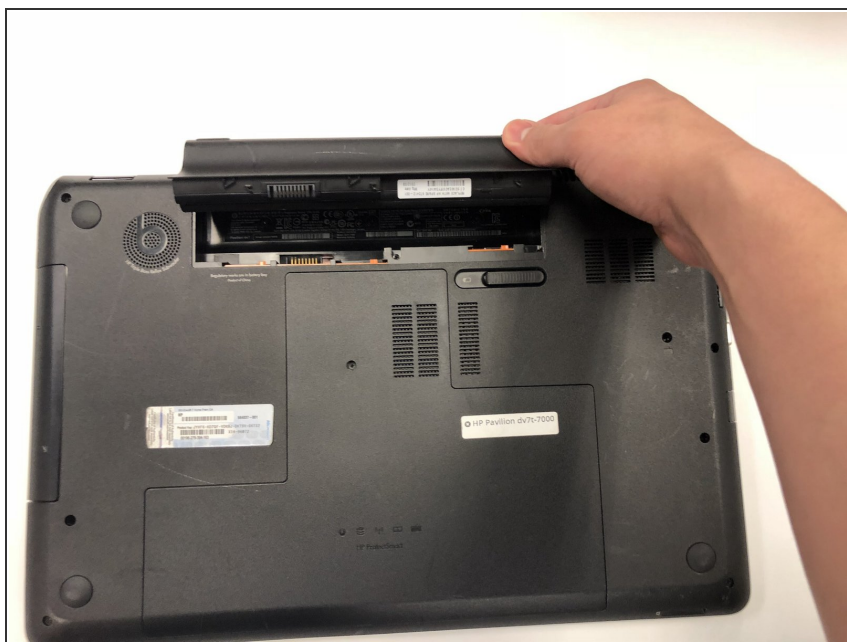
- Turn the computer off and disconnect it from all power sources.

## Step 2



- Slide the battery release switch to the left.

## Step 3



- Hold the release switch all of the way to the left and your other hand to pull the battery out.

## Step 4 — Back Panel



- Unscrew the single Phillips #00 screw.
- ⓘ Screw will not come out, it is connected to the panel

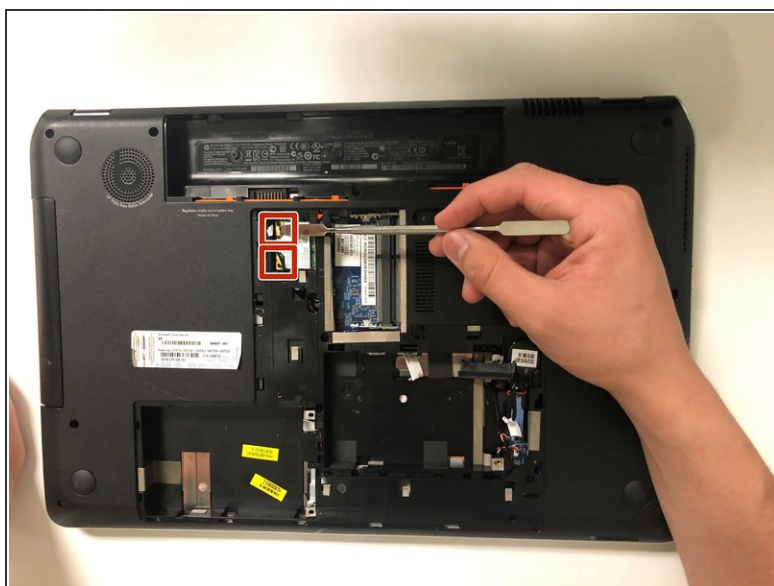


## Step 5



- Remove service hatch by sliding away from the computer and lifting up.

## Step 6 — Wi-Fi Card



- Use the flat end of a spudger to pop off the antenna connectors.

## Step 7



- Remove single Phillips #00 screw.
- Pull the card out by hand.

To reassemble your device, follow these instructions in reverse order.