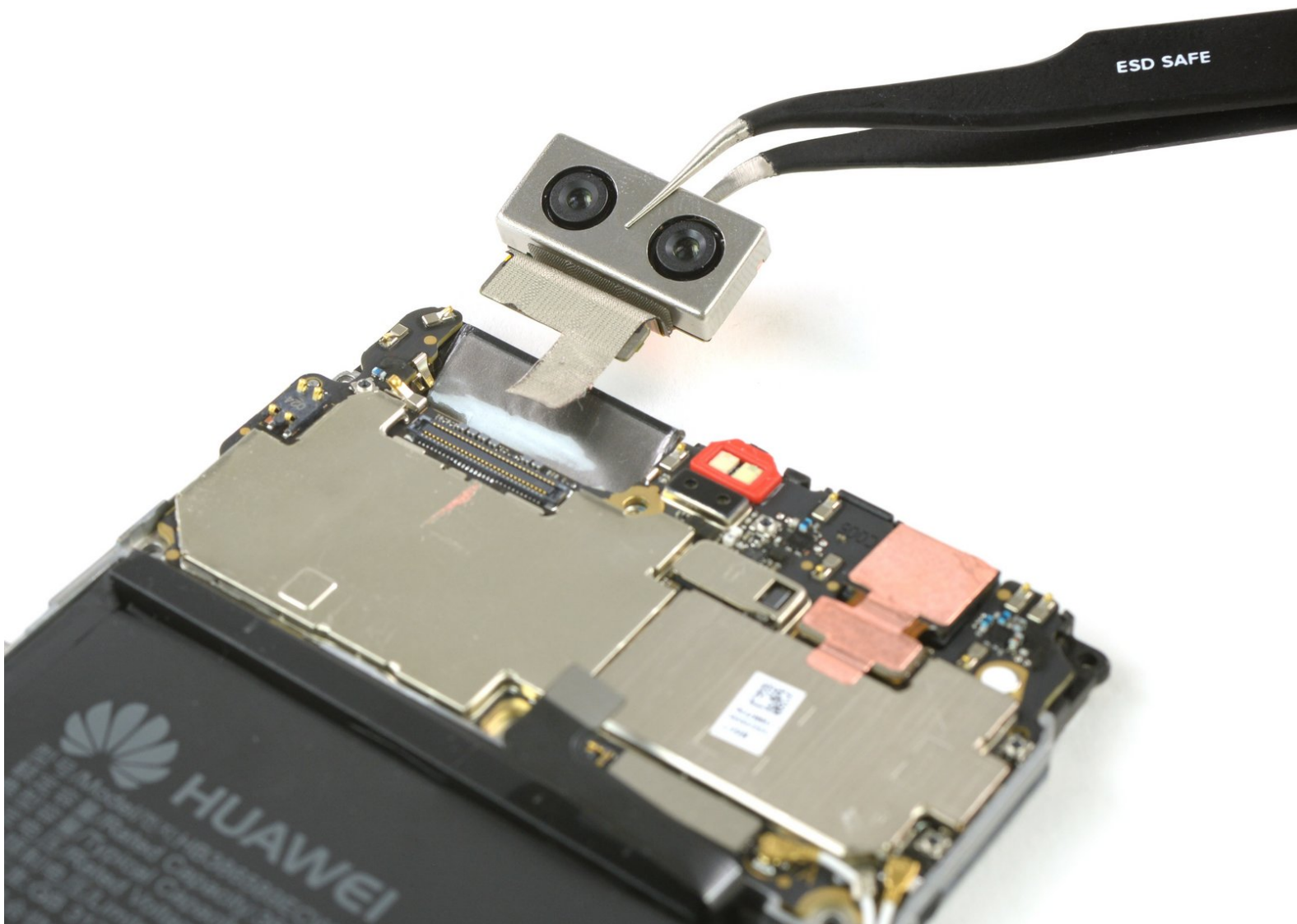




# Huawei P10 Plus Rear Camera Replacement

Replace the rear camera in your Huawei P10 Plus smartphone.

Written By: Dominik Schnabelrauch



# INTRODUCTION

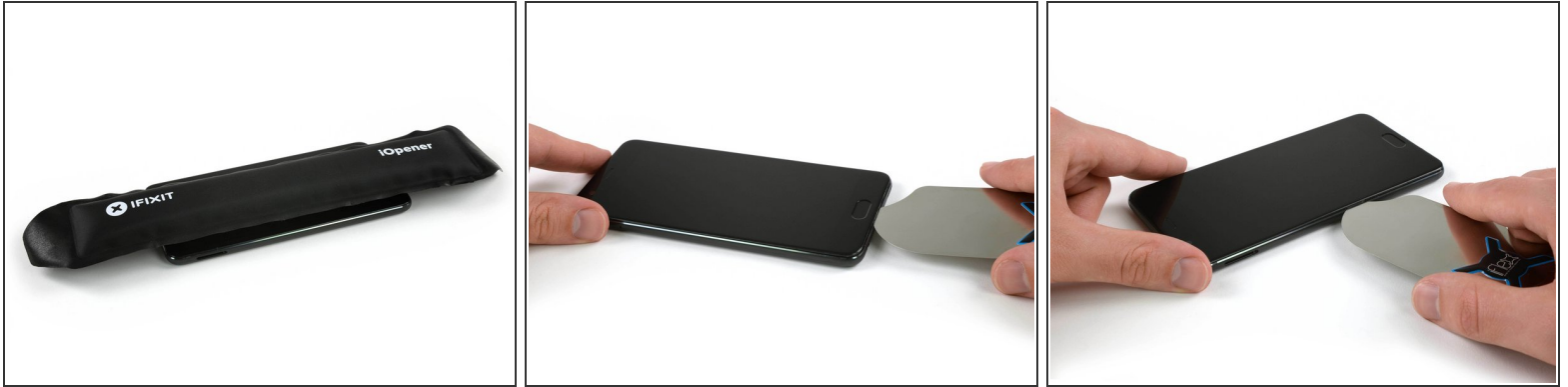
In this guide we show you how to replace the rear camera in your Huawei P10 Plus smartphone.

---

## TOOLS:

- [iFlex Opening Tool](#) (1)
  - [iOpener](#) (1)
  - [SIM Card Eject Tool](#) (1)
  - [iSlack](#) (1)
  - [Tweezers](#) (1)
  - [Spudger](#) (1)
  - [Phillips #000 Screwdriver](#) (1)
-

## Step 1 — Display



- [Use an iOpener](#) to loosen the adhesive beneath the display, focusing on the upper and lower part of the display.
- Use an opening pick, or iFlex, to separate the adhesive on all sides of the display.

**⚠ To avoid damage to the display, do not push the tool too deeply into the phone.**

## Step 2



**⚠ There is a thin display cable between the screen and phone, be very careful not to rip it when opening the device.**

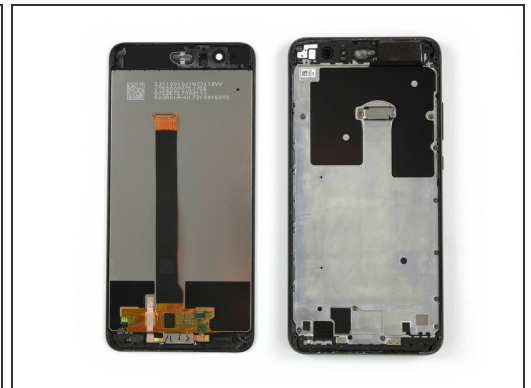
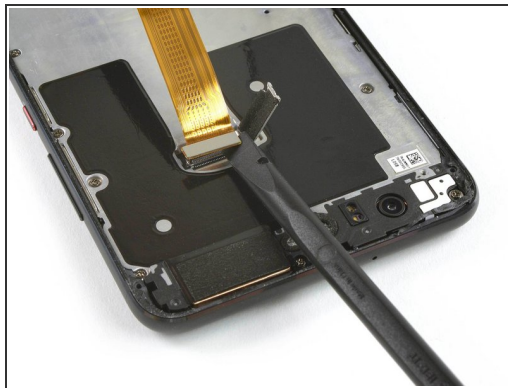
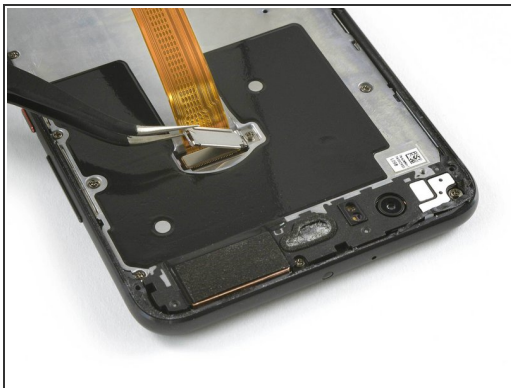
- Place a suction cup, or iSlack, on the upper portion of the phone and lift the display off the midframe.
- Don't remove the display, the cable is trapped under a bracket screwed to the phone. You can flip the display to lay it down without straining the cable, or simply hold it in the next steps.

### Step 3 — Unfasten the screw



- Remove the 3.3 mm-long Phillips screw securing the display flex connector bracket.

### Step 4



- Open the metal bracket that covers the display flex cable.
  - Use a spudger to disconnect the display flex cable.
  - Remove the display.
- ✦ When reassembling your phone replace old adhesive with [double-sided tape](#) or [pre-cut adhesive strips](#).

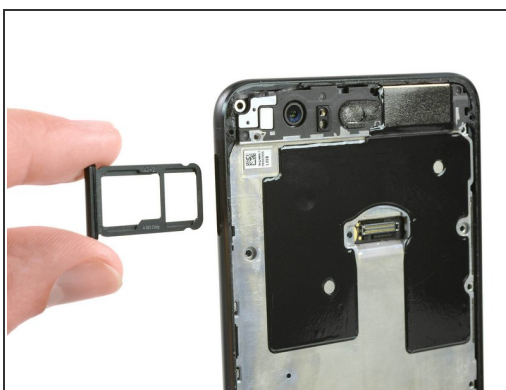
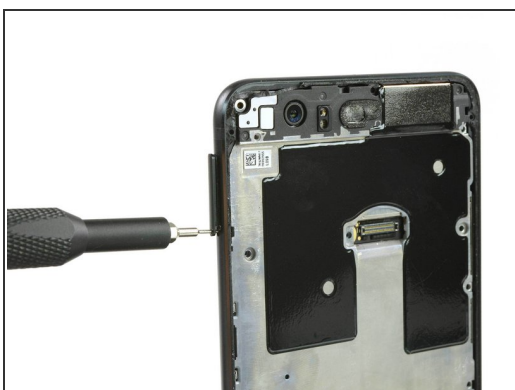


## Step 5 — Midframe



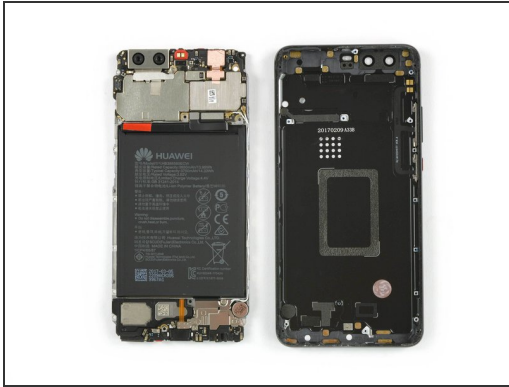
- Remove the 13 Phillips #00 screws.
- Remove the metal shield which holds down the display flex connector.

## Step 6



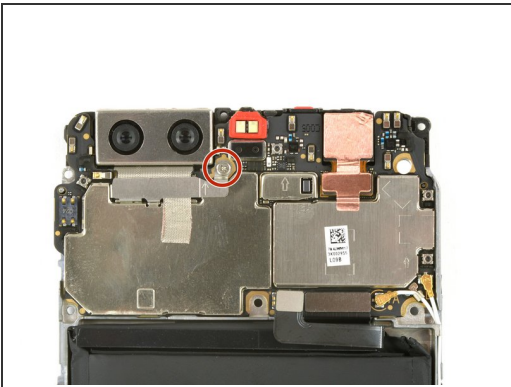
- Remove the SIM card tray.
- Use the pointed end of a spudger to pry out the mid frame until you can get a good grip.

## Step 7



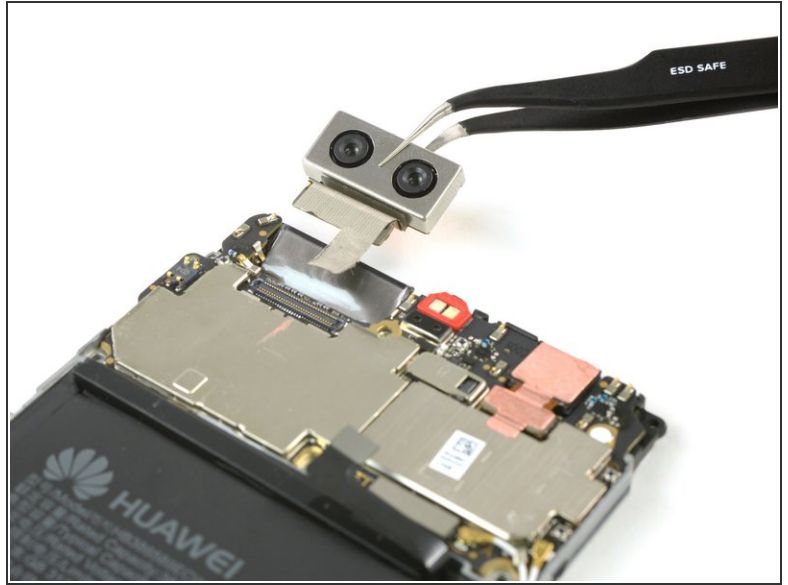
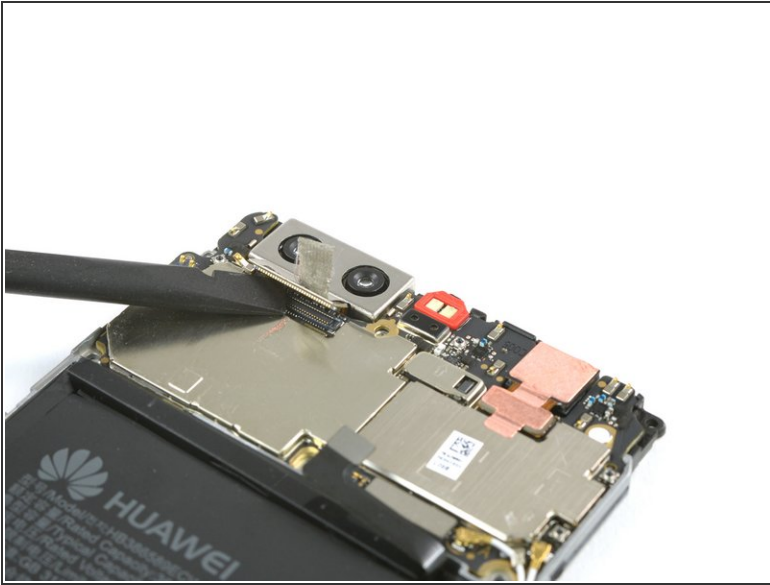
- Remove the mid frame.
- Disconnect the battery flex cable with a spudger.

## Step 8 — Rear Camera



- Remove the Phillips #000 screw.
- Remove the metal clamp.
- Peel off the adhesive tape that connects the rear camera to the motherboard.

## Step 9



- Use a spudger, to disconnect the rear camera flex cable.
- Remove the camera.

To reassemble your device, follow these instructions in reverse order. When reassembling your phone apply new adhesive where it is necessary.