



# Shark Professional Steam Pocket Mop Electric Valve Replacement

Follow this guide for replacing the electric valve that controls the flow of water inside your Shark Professional Steam Pocket Mop.

Written By: Brett Wilson



---

## INTRODUCTION

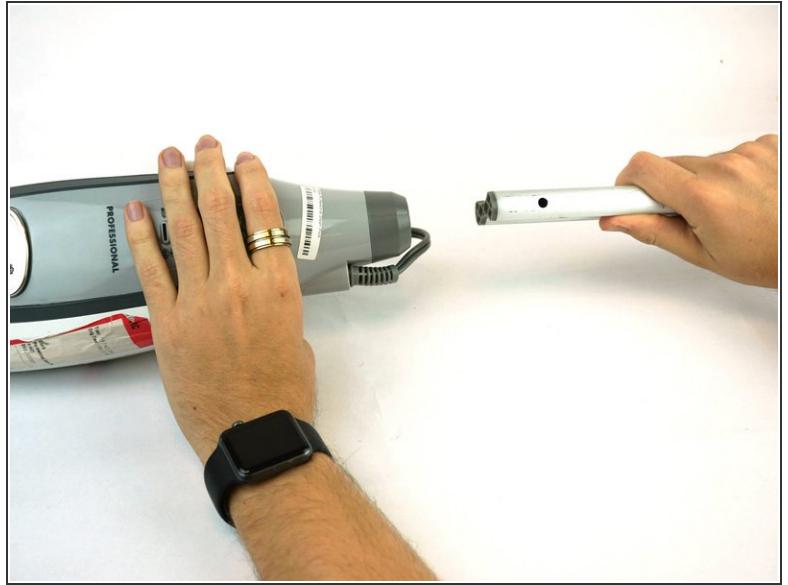
The electric valve controls the flow of water from the tank to the heating element. If the tank is full and the mop isn't producing any steam, the electric valve might be the problem. Before doing any disassembly on your Shark Professional Steam Pocket Mop, unplug the mop and empty the water tank for your safety.



### TOOLS:

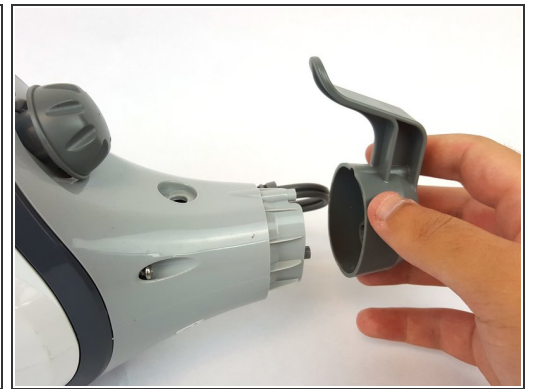
- [T10 Torx Security Bit Screwdriver](#) (1)
  - [Phillips #2 Screwdriver](#) (1)
  - [Metal Spudger](#) (1)
-

## Step 1 — Shark Professional Steam Pocket Mop Front Panel Disassembly



- Unwrap the power cord from the handle.
- Remove the 56.0 mm Phillips head #2 screw located above the water tank cap.
- Pull the handle to separate it from the body.

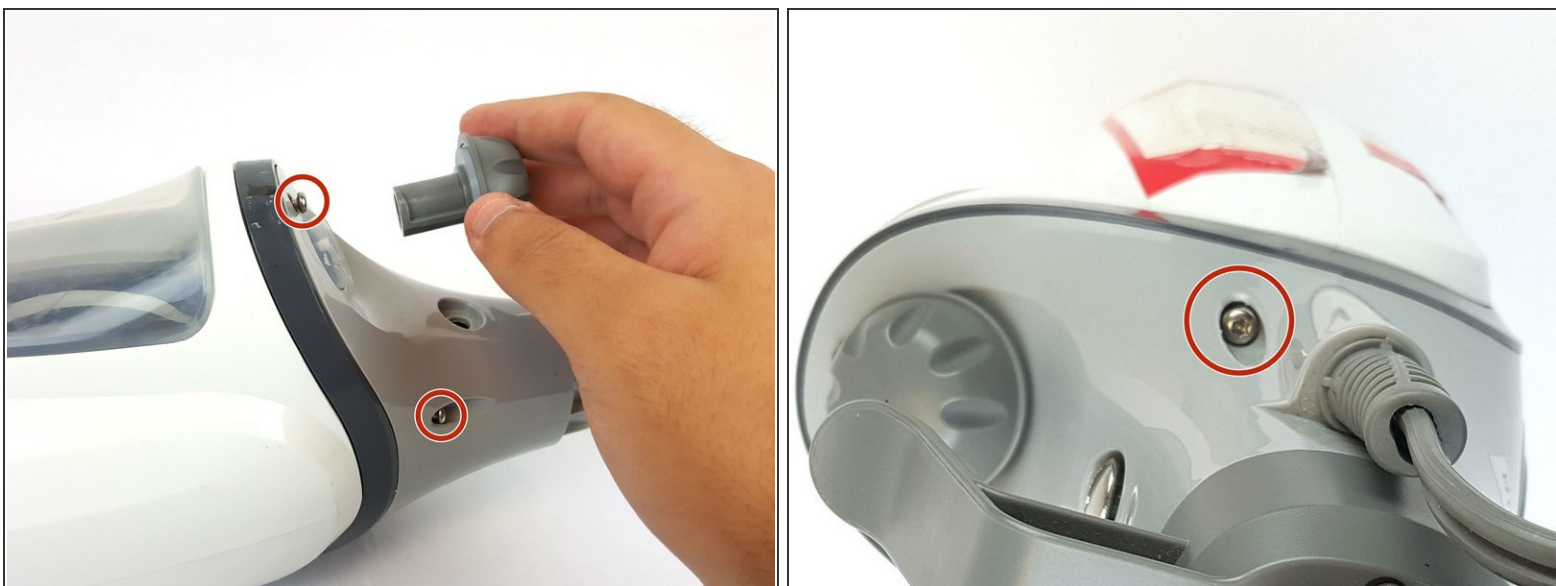
## Step 2




- Remove the three 12.0 mm Phillips head #2 screws where the handle connects to the body.
- Remove the plastic cap.



## Step 3



- Remove the three 16.0 mm T10 Torx screws near the top of the body and remove the water tank cap.

 The third screw is directly on other side of the bottom screw in the photo.

## Step 4



- Remove steam control button cover with a metal spudger.
- Remove the two 12.0 mm Phillips head #2 screws underneath.
- Remove the plastic rim with clear plastic cover.

## Step 5



- Remove the Shark logo decal on the front of body using a metal spudger.
- Remove the two 12.0 mm Phillips head #2 screws underneath.
- Pull out the plastic cover to remove.

## Step 6



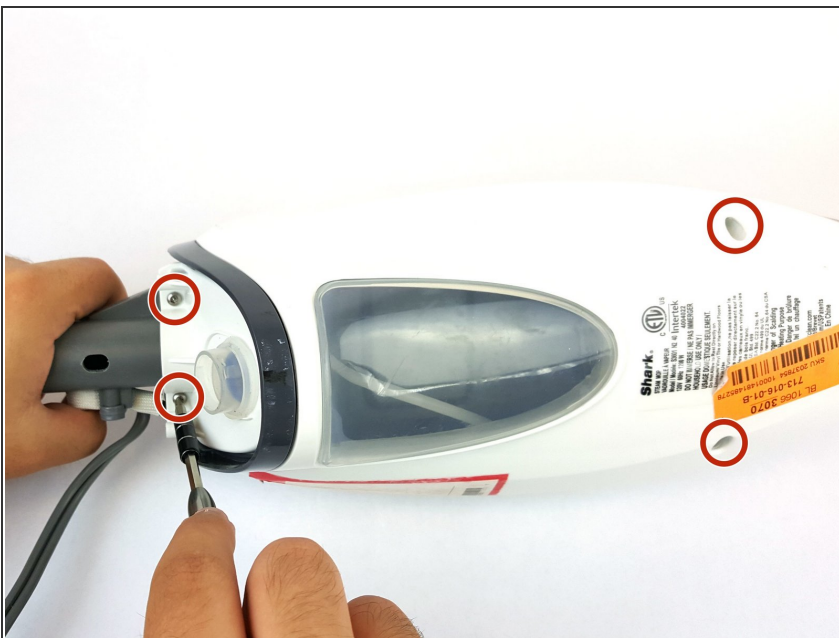
- Pop off the grey front plate to expose the control panel and screws necessary to open mop body.

## Step 7 — Shark Professional Steam Pocket Mop Open Mop Body



- Remove the three 12.0 mm Philips head #2 screws connected to the dark grey plastic trim.

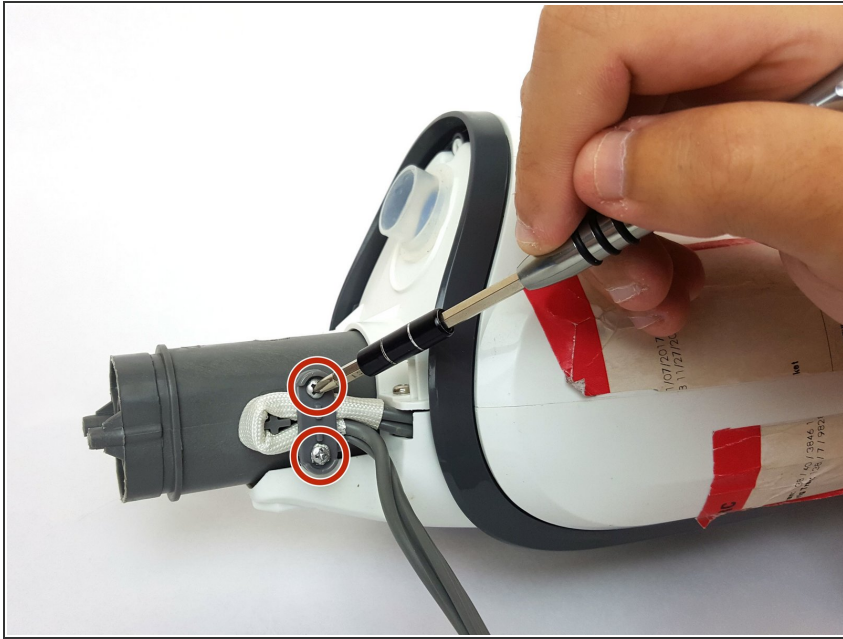
## Step 8



- Remove the four 16.0 mm T10 Torx screws located on the back of the mop.

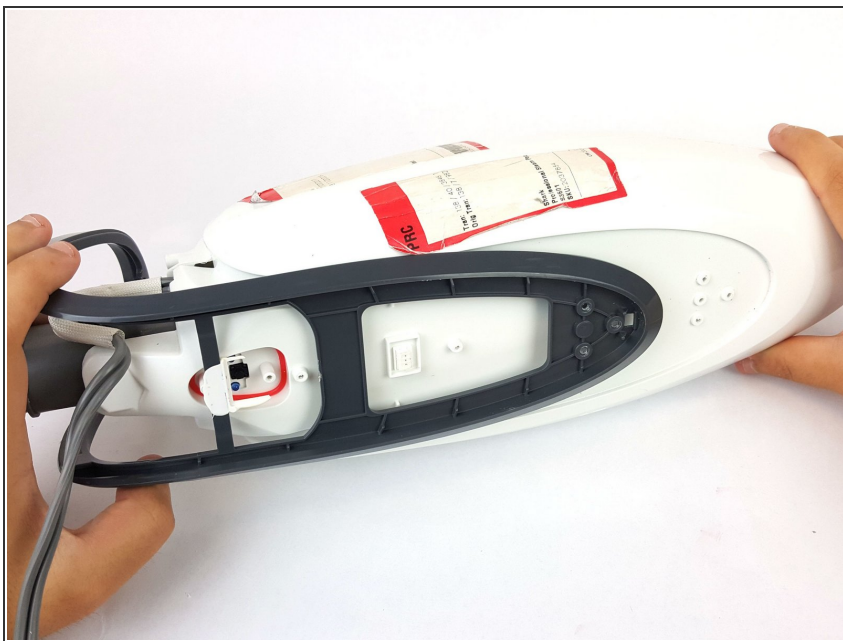


## Step 9



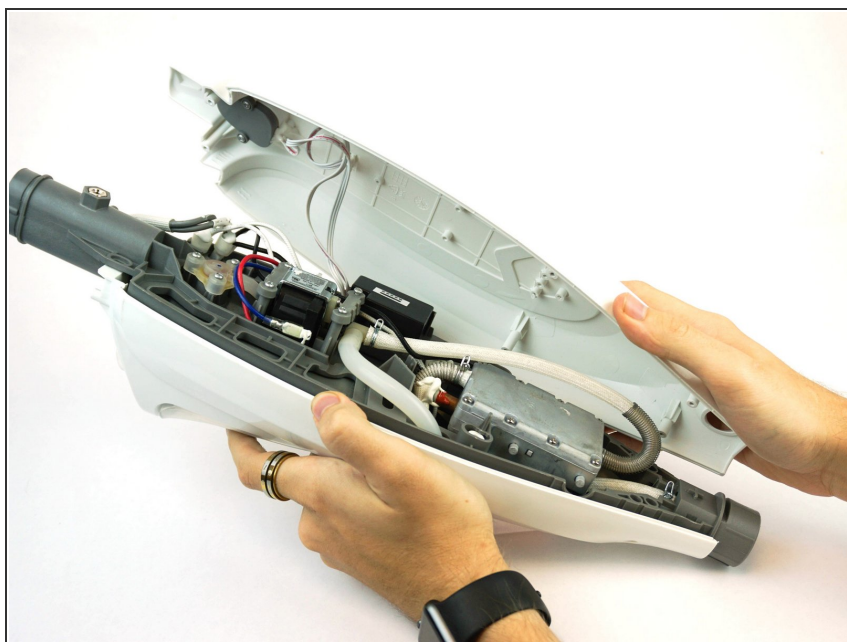
- Remove the two 12.0 mm Phillips head #2 screws that hold the power cord to the device.

## Step 10



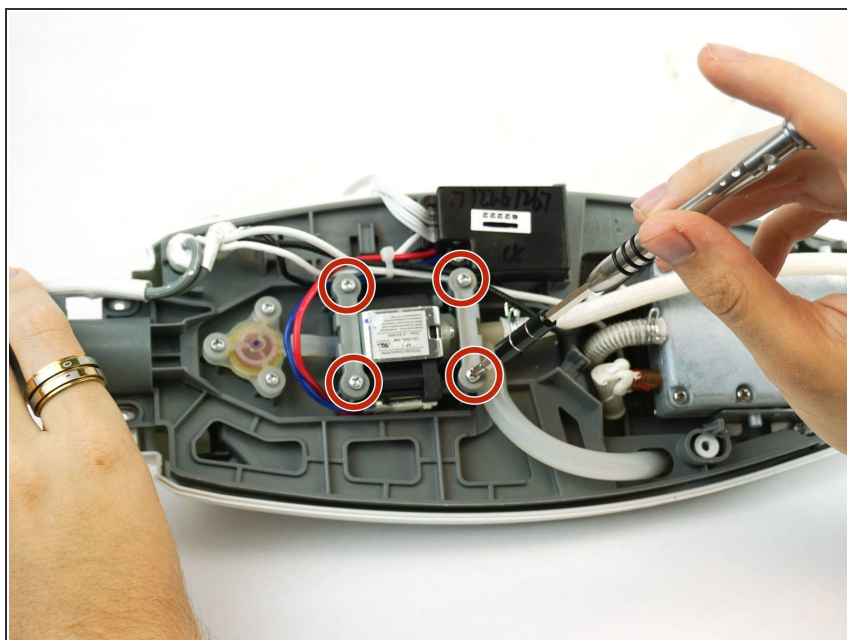
- Pop off the dark grey plastic trim cover.

## Step 11



- Pop open the white plastic mop body by pulling apart from the front and back side.

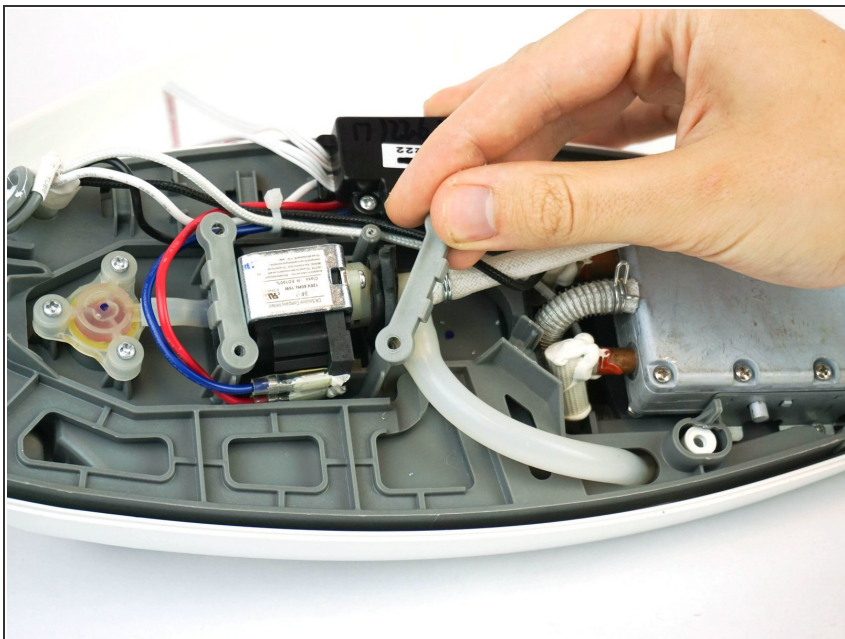
## Step 12 — Electric Valve



- Remove the four 12.0 mm Phillips head #2 screws on top of the electric valve.

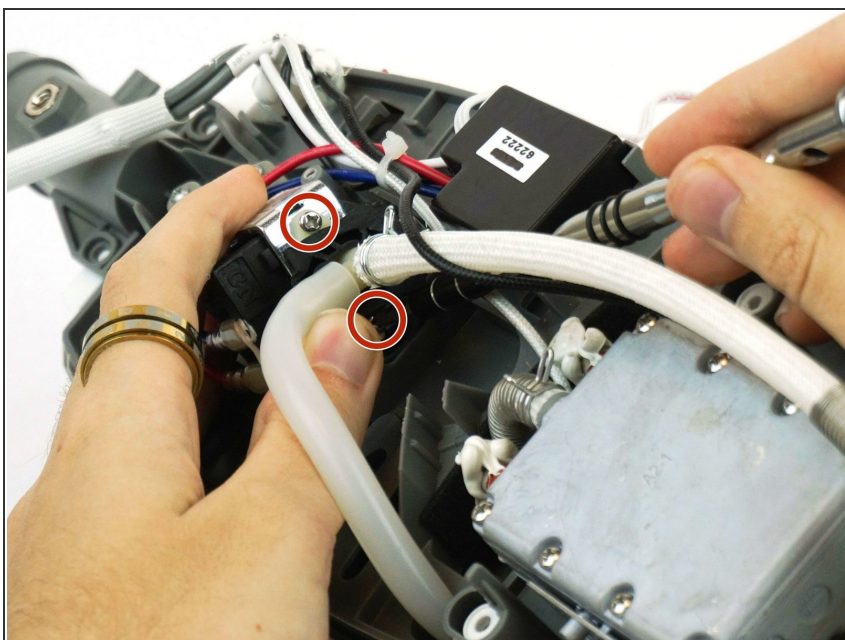


## Step 13



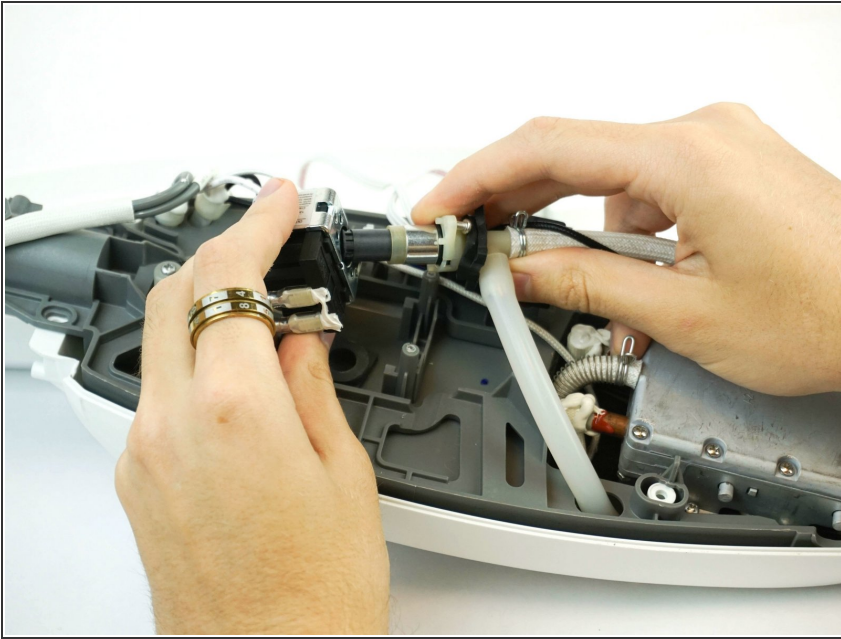
- Remove both plastic pieces holding the electric valve in place.

## Step 14



- Lift electric valve out of place and tilt to the side to expose and remove the two 12.0 mm Phillips head #2 screws on the side.

## Step 15



- Pull apart to remove the electronic valve.

To reassemble your device, follow these instructions in reverse order.