



# Sony Cyber-Shot DSC-H1 Lens Replacement

Replacing a damaged lens.

Written By: Charlie Pugada



---

## INTRODUCTION

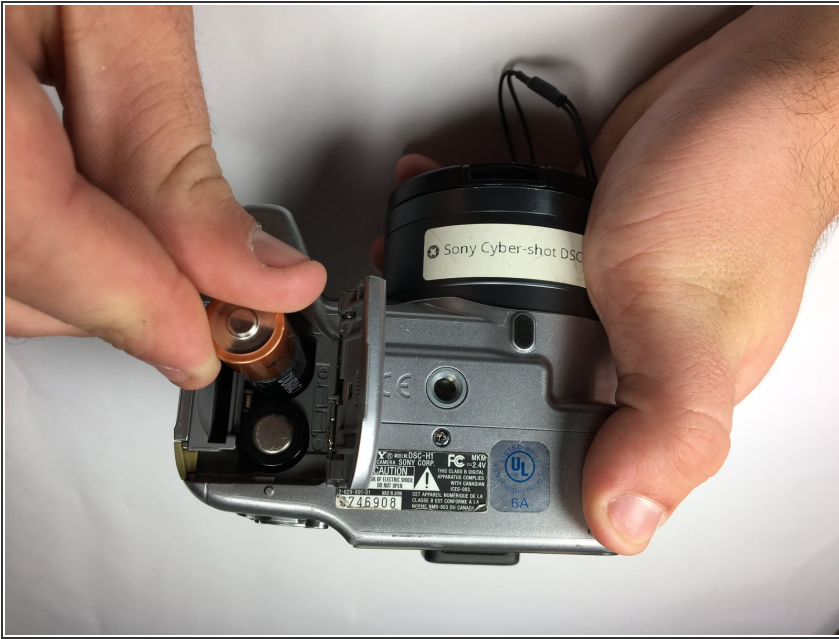
If the camera lens is unrepairable, you may just need to replace it with a brand new one. This is how you take it apart before you insert a new one.



### TOOLS:

- [Phillips #0 Screwdriver](#) (1)
  - [Tweezers](#) (1)
-

## Step 1 — Back Panel



- Power down the camera and remove the batteries.

## Step 2



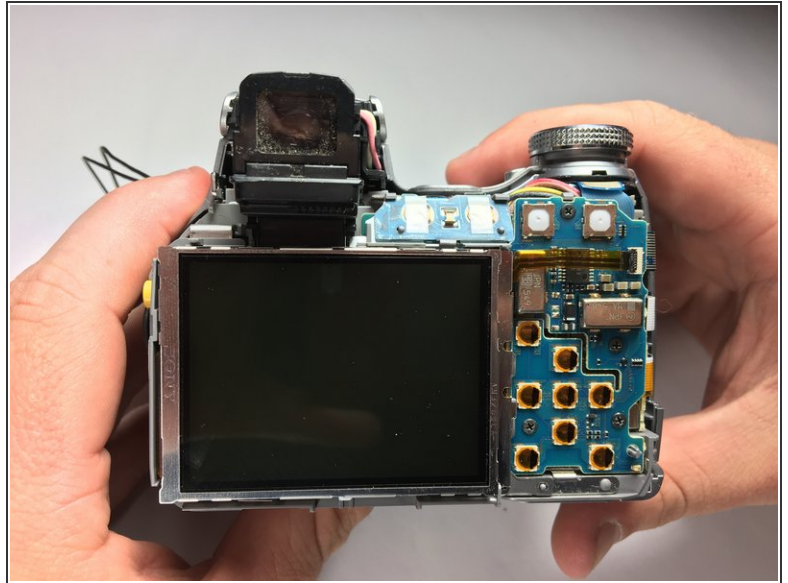
- Using a Phillips #0 screwdriver, remove all of the screws from the back panel casing.

**i** There are six 5.22mm long, 3.00mm head diameter screws total.

**i** The left side is not shown but there should be 1 screw on that side.

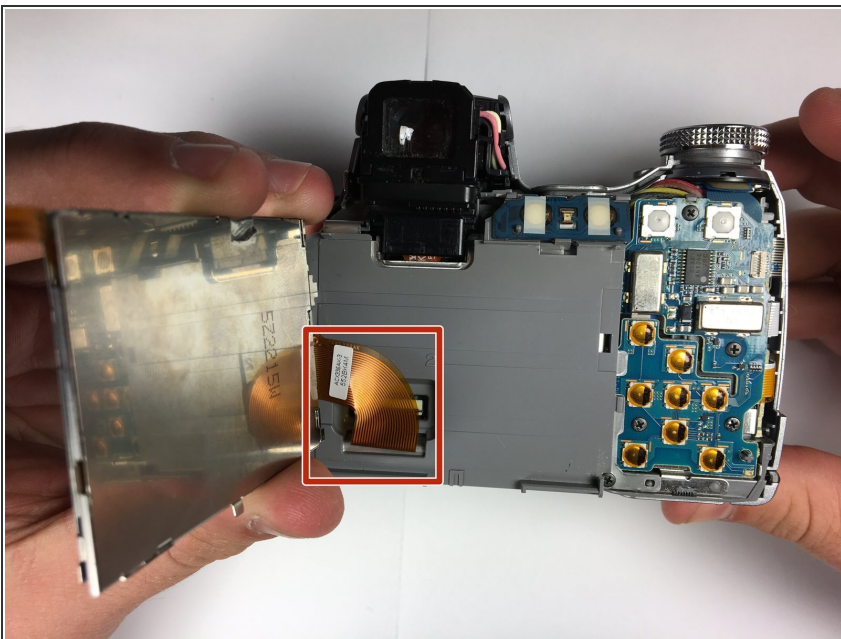


## Step 3



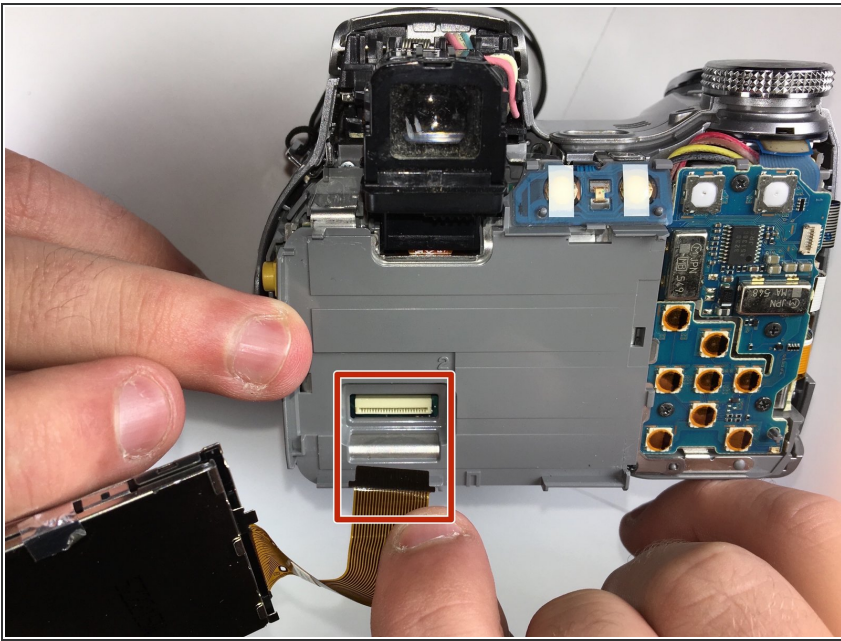
- Remove the back casing.
- ⓘ The casing itself is sturdy so don't be afraid to remove it forcefully.

## Step 4 — LCD Screen



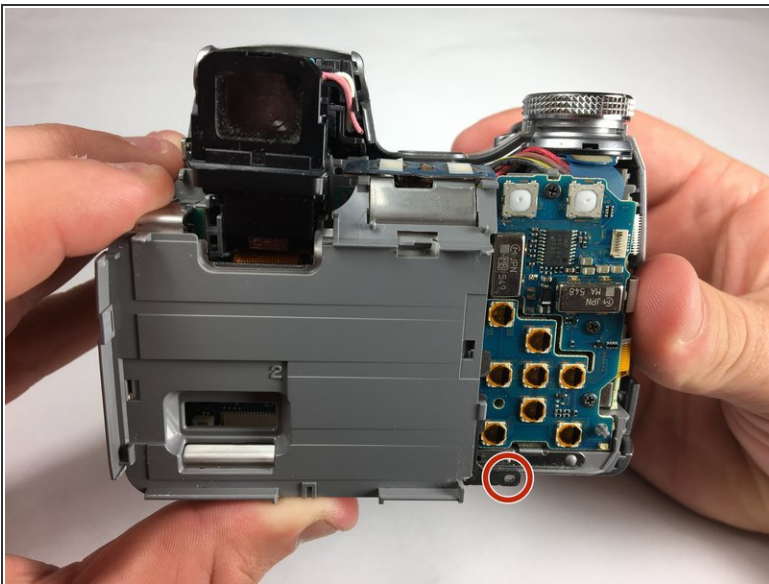
- Take a hold of the right side of the LCD screen and lift it towards the left.
- ⓘ The screen is held firm and will require a bit of force to ease it from its housing.

## Step 5



- Unplug the large conductive tape attached to the screen.
- Remove the LCD from the device.

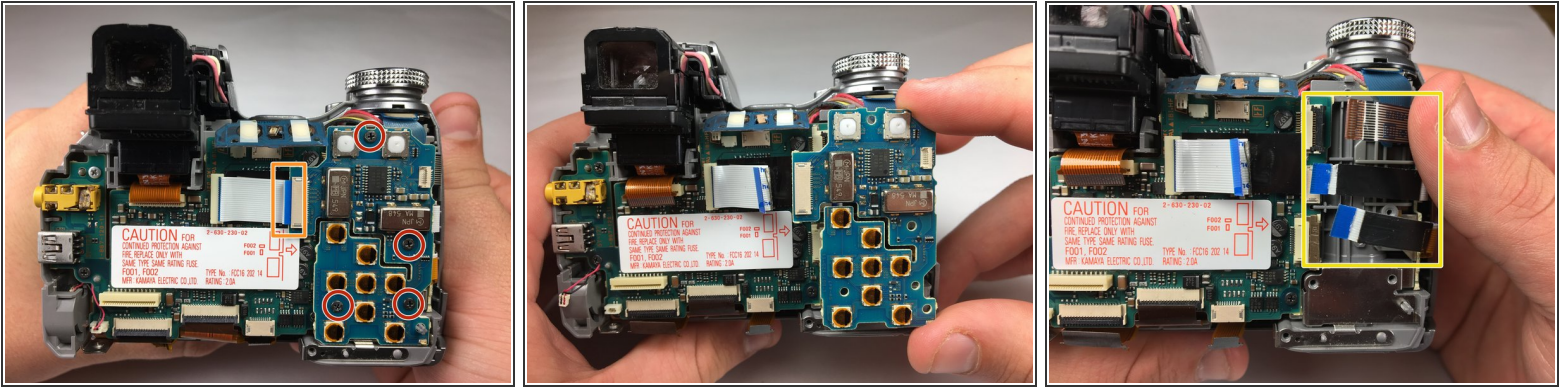
## Step 6 — Lens



- Unscrew and remove the gray backing behind the LCD screen.

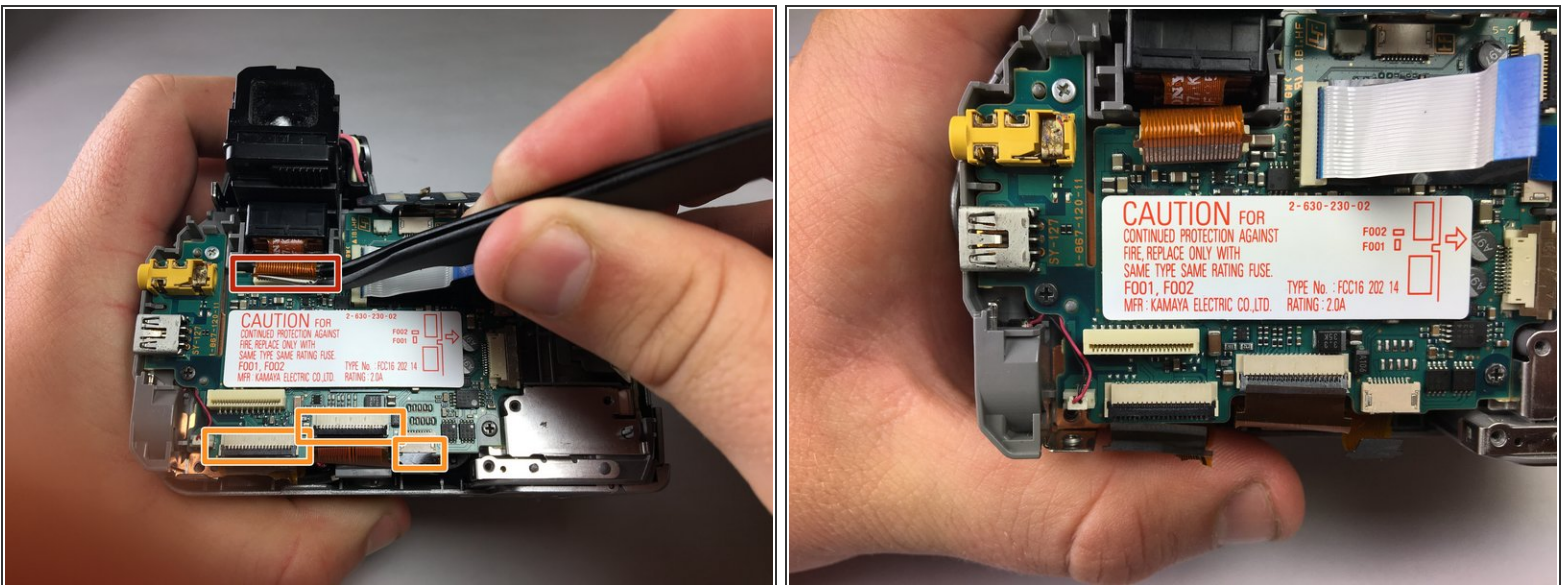


## Step 7



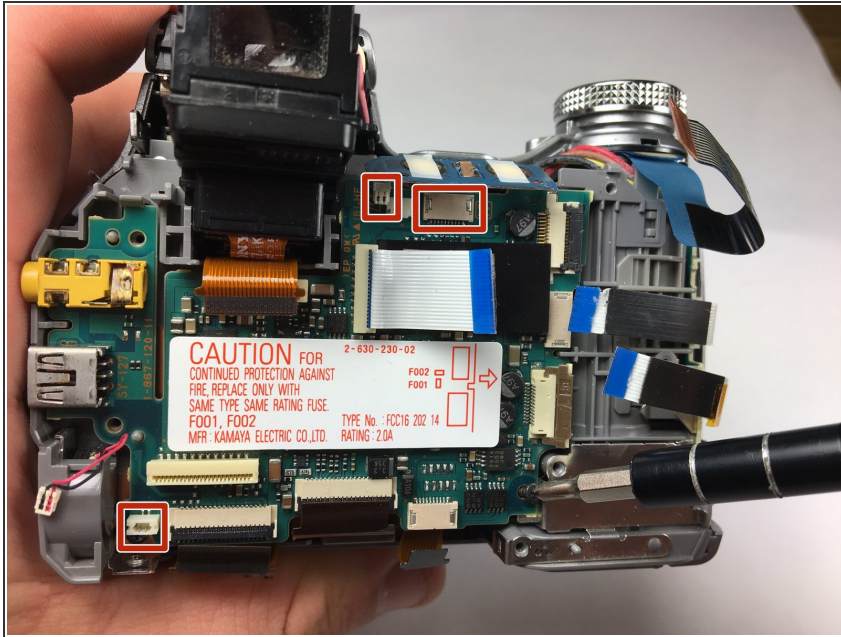
- Using a Phillips #0 screwdriver, unscrew the four 4.24 mm black screws off the blue panel on the right side.
- Disconnect the white conductive tape.
- Remove the blue panel.
- Use tweezers to remove the three conductive tape strips on the right side.

## Step 8



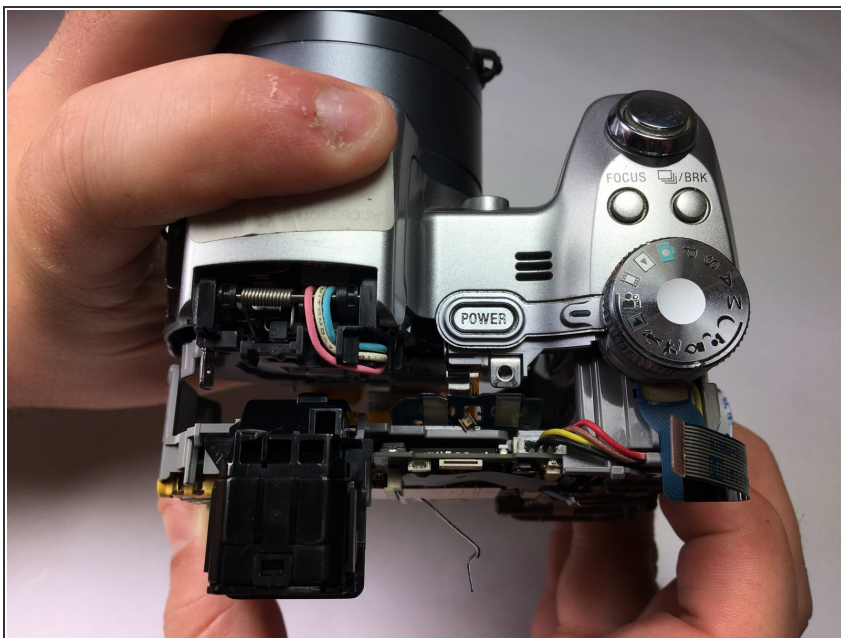
- Use tweezers to remove the orange conductive tape located below the shutter.
- Unplug the three ZIF connectors from the motherboard.

## Step 9



- Flip up the blue overlapping board at the top.
- Use tweezers to disconnect the remaining connectors.

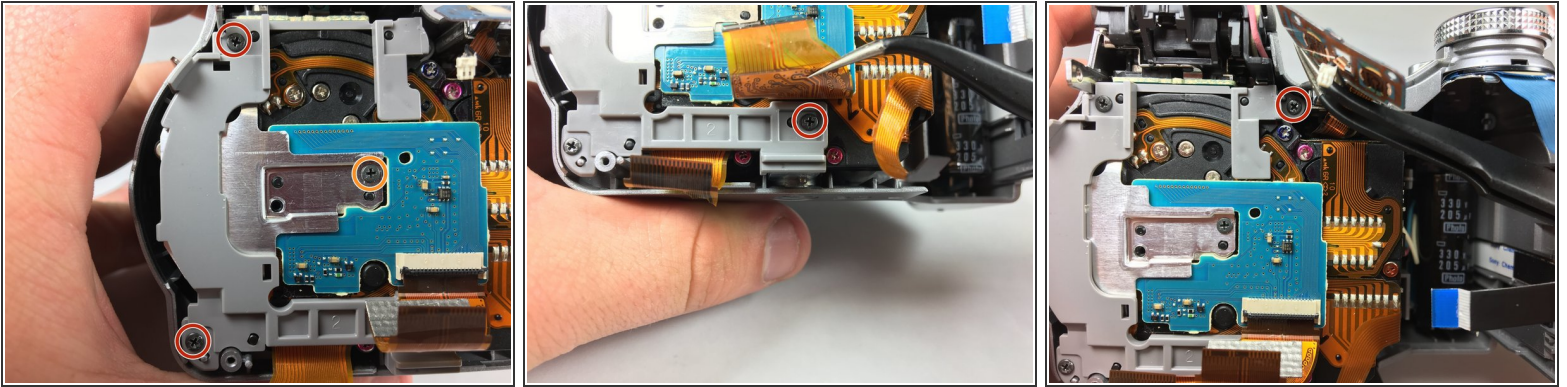
## Step 10



- Remove the motherboard and battery pack unit.

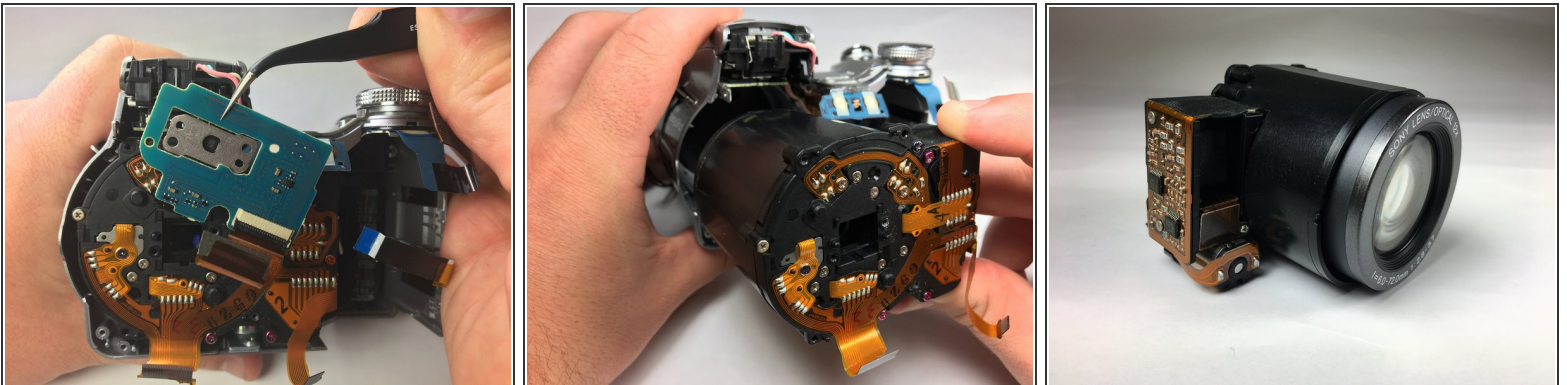


## Step 11



- Use a screwdriver to remove 5 screws on plastic panel.
- Remove the single screw on the silver panel in the center.

## Step 12



- Use tweezers to remove the blue control panel.
- Remove the lens from the camera.

To reassemble your device, follow these instructions in reverse order.