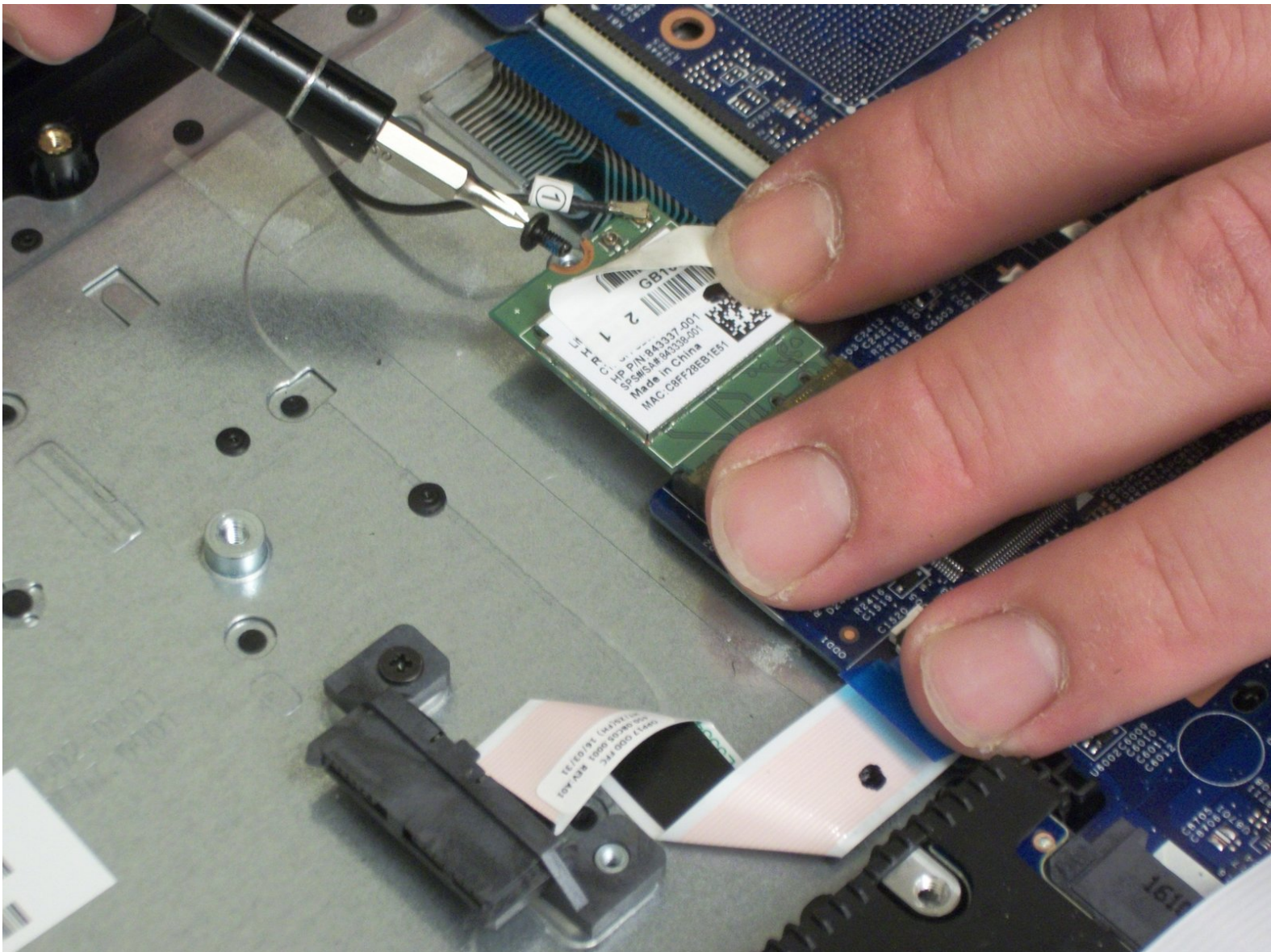




Wireless Card Replacement

This guide will show you how to replace the WiFi card in your HP 17-x061nr laptop.

Written By: Curtis Haley



INTRODUCTION

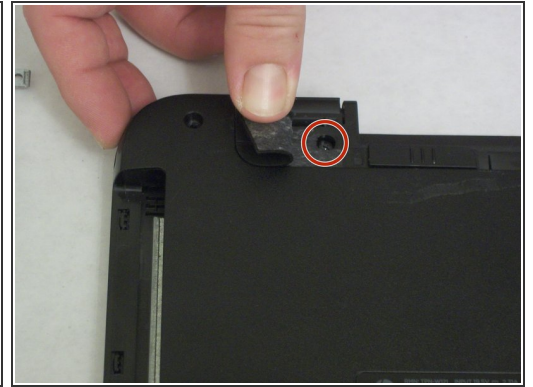
The wireless or "WIFI" card receives signals from a wireless router or other wireless device and translates the signal so that the computer user can access the Internet any time they are in range of a Wi-Fi hotspot or wireless network. WIFI cards are "plug and play" components which means that they can be removed and replaced easily. The tricky part is getting to them inside the computer. The replacement WIFI card should be left in the package until it is ready to be installed as any foreign material that gets on or in the WIFI card may affect the performance of the component. If you are unable to connect to the internet unless your computer is physically connected to the router then replacing your WIFI card as described in this guide should fix this issue.



TOOLS:

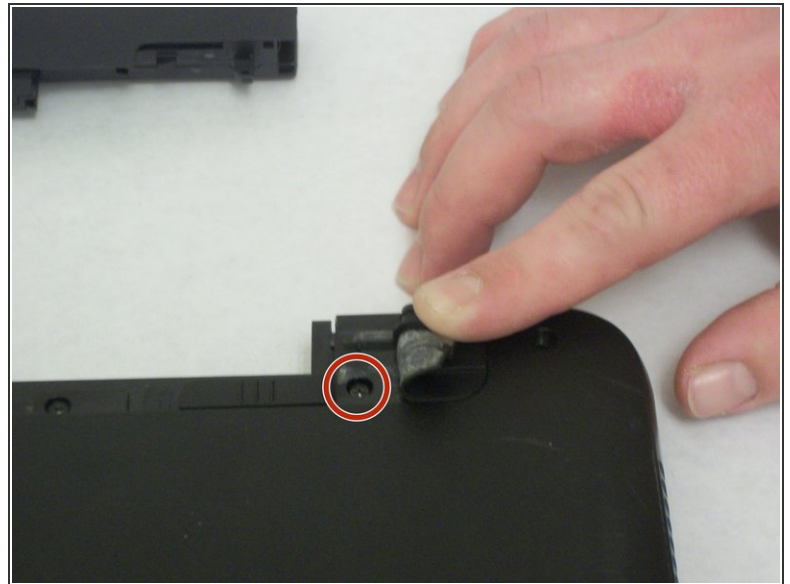
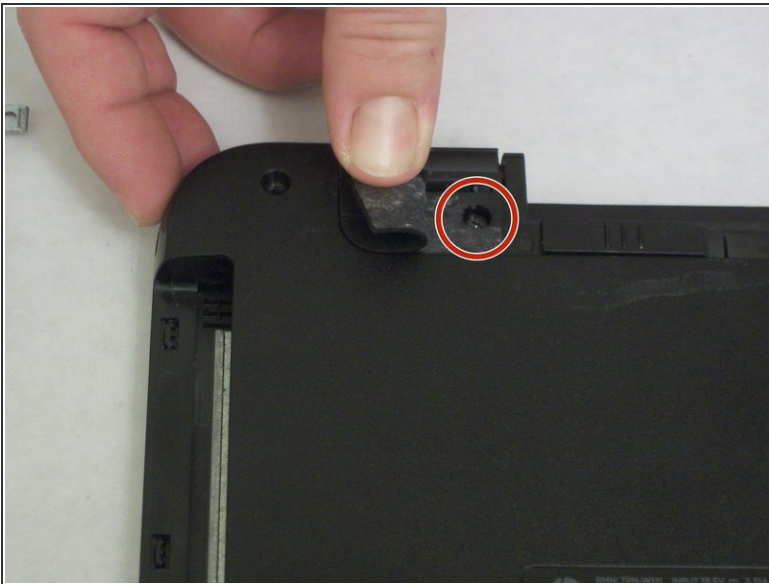
- [iFixit Opening Tools](#) (1)
 - [JIS #0 Screwdriver](#) (1)
-

Step 1 — HP 17-x061nr Disassembly



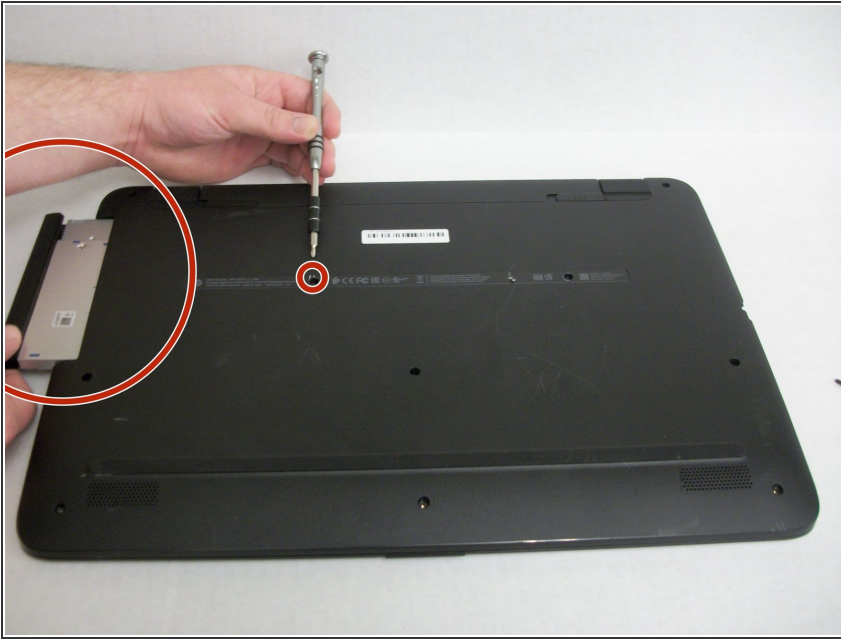
- With the laptop upside down, remove the battery by hand and the twelve 7.0 mm screws that are holding the back case to the front. Use a JIS #0 screwdriver to remove the screws.

Step 2



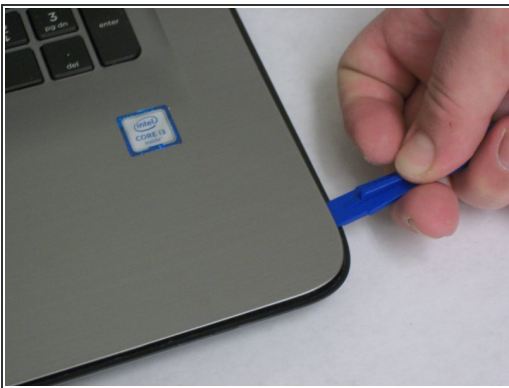
- Peel back the rubber footrests located next to the battery, on the left and right sides.
- Remove the two 7.0 mm screws underneath the rubber feet using a JIS #0 screwdriver.

Step 3



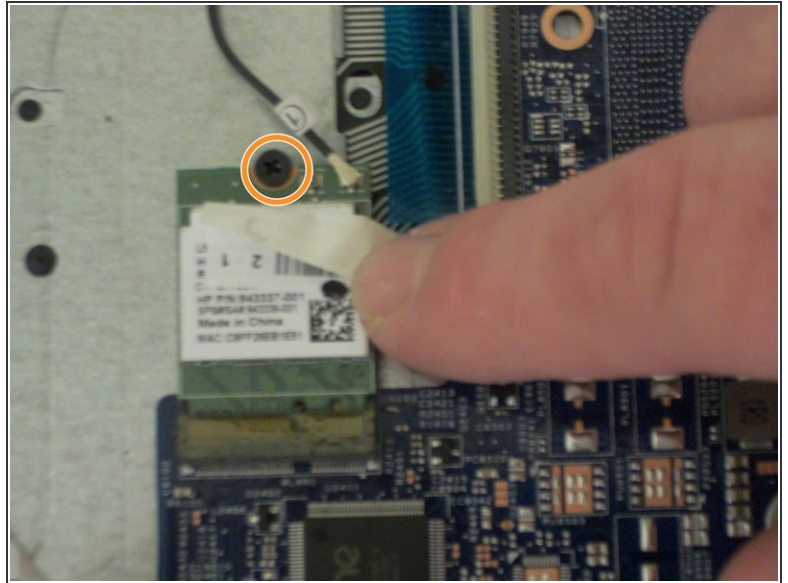
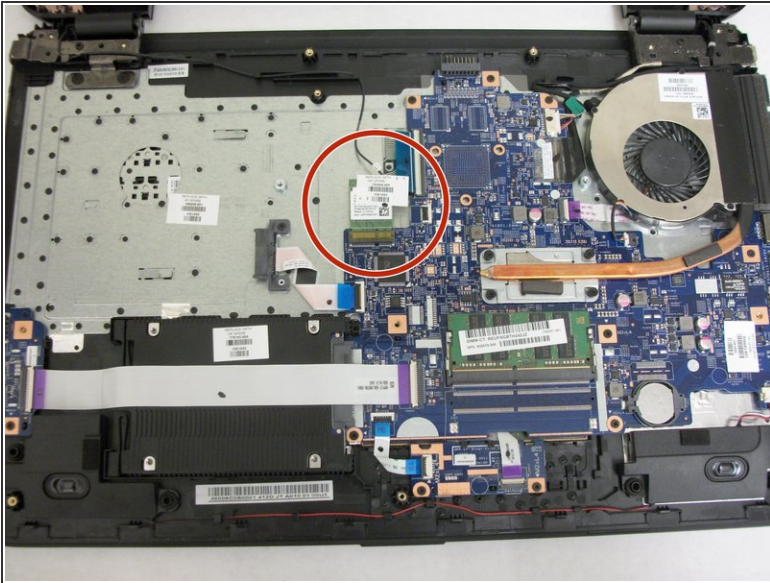
- Slide the optical drive out and away from the laptop.

Step 4



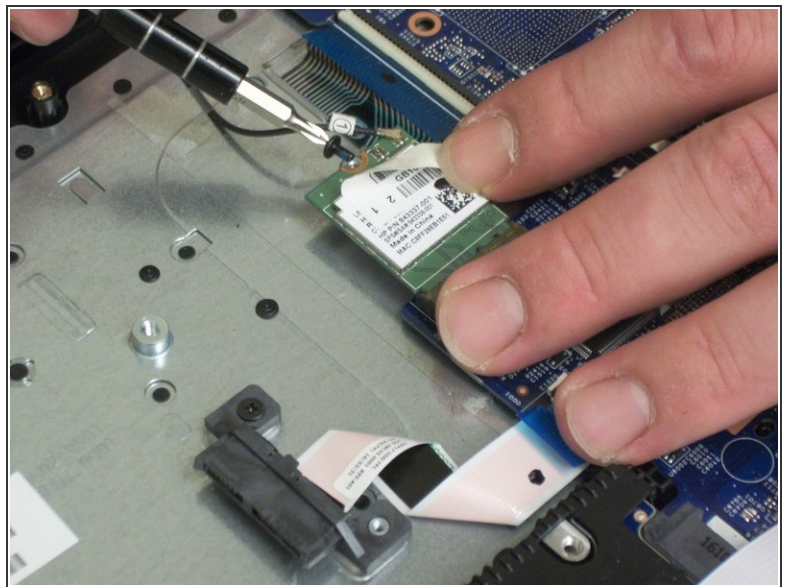
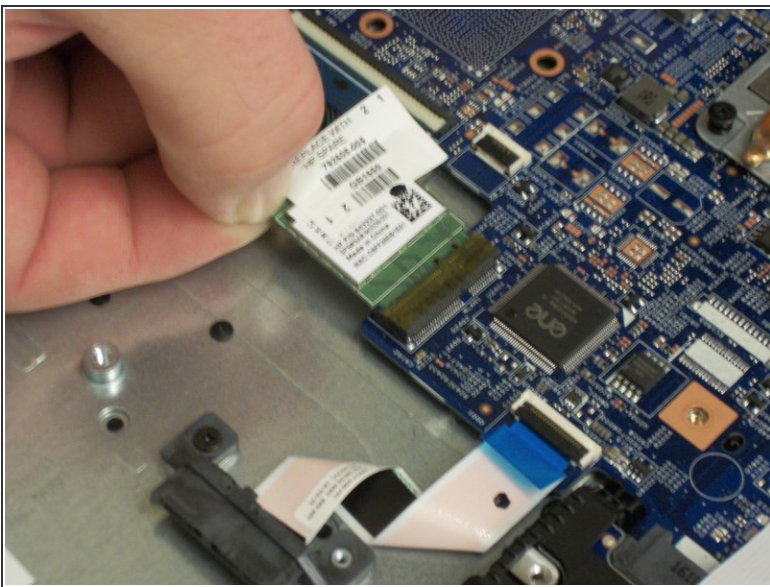
- Flip the computer over and use a plastic opening tool to wedge between the back and front cases.
- Trace the perimeter of the laptop. Make sure to keep the tool inserted between the front and back cases. You will hear popping sounds as the back case becomes disengaged from the front plate.
- Flip the laptop over and lift the back case off. Now you have access to all of the internal hardware.

Step 5 — Wireless Card



- Locate the wireless card in the center of the computer and attached to the motherboard.
- Locate the 4.0 mm hidden screw holding the wireless card and gently remove it.

Step 6



- Remove the old wireless card and replace with the new wireless card. Gently screw it into place.
- ⓘ Be sure to keep the replacement within the package until you are ready to place it.

To reassemble your device, follow these instructions in reverse order.