



# Motorola Moto G4 Play Screen Replacement

Use this guide to replace a broken or...

Written By: Yordan Gil



# INTRODUCTION

Use this guide to replace a broken or malfunctioning screen. When removing the screen, make sure to wear safety glasses.

Before you begin, download the [Rescue and Smart Assistant](#) app to backup your device and diagnose whether your problem is software or hardware related.

Note: Microwave only one iOpener at a time for no more than 30 seconds, and make sure to not microwave it more than once within two minutes.

---

## TOOLS:

[iFixit Opening Tool](#) (1)

[Tweezers](#) (1)

[Phillips #000 Screwdriver](#) (1)

[Spudger](#) (1)

[iOpener](#) (1)

[Plastic Cards](#) (1)

[Jimmy](#) (1)

---

## Step 1 — Battery



- Open case with a plastic opening tool that has the same size as the divot located at the bottom left of the phone. If you don't have an opening tool, use your finger nails.

## Step 2



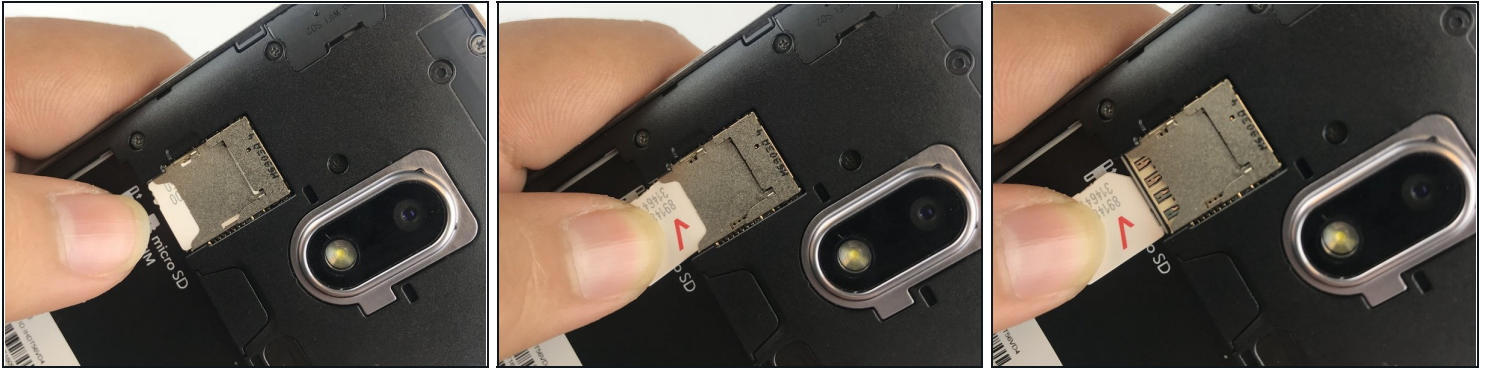
- Lift the case by the nearest corner to the divot and remove it from the phone.

## Step 3



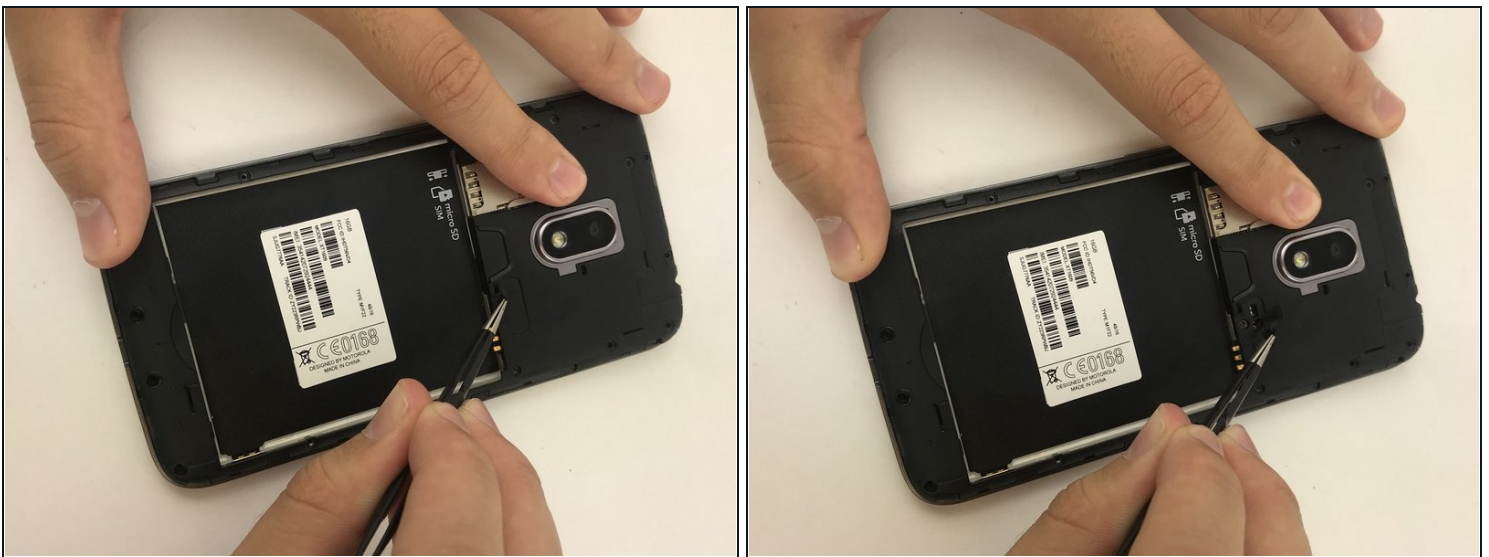
- Place the plastic opening tool into the notch located at the bottom of the battery compartment, and lift upwards. If you don't have an opening tool, use your finger nails.
- Remove battery from your phone.

## Step 4 — Midframe



- Remove any SIM card and/or memory card present using your hand.

## Step 5



- Remove the small silicon cover at the bottom right of the camera using tweezers.

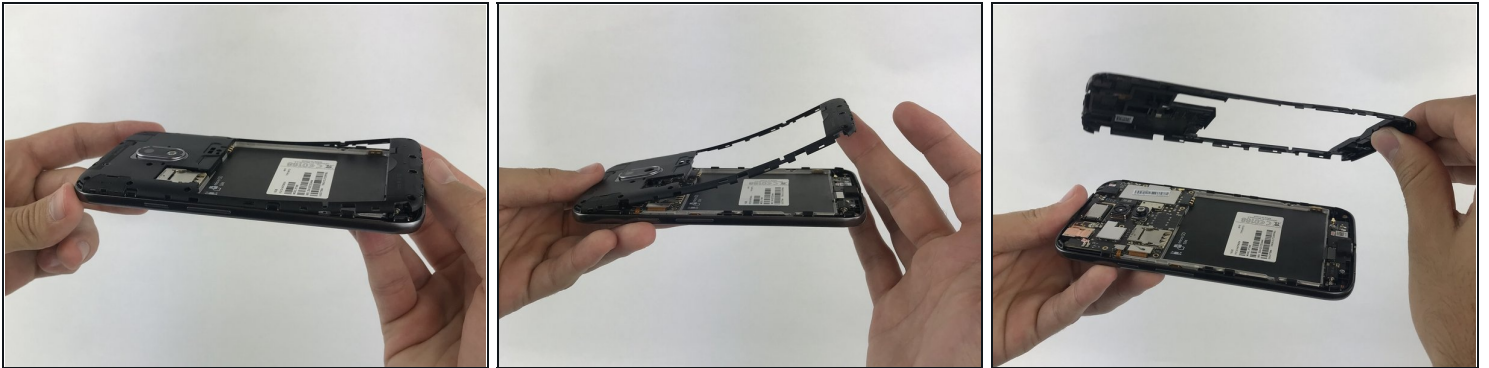


## Step 6



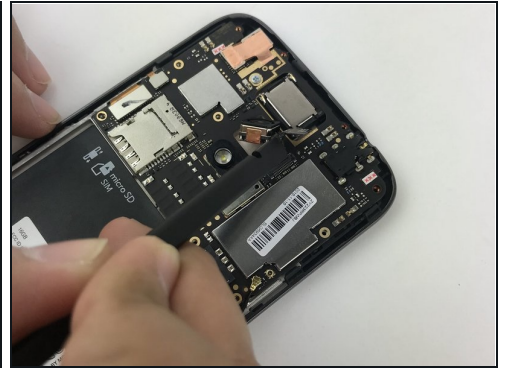
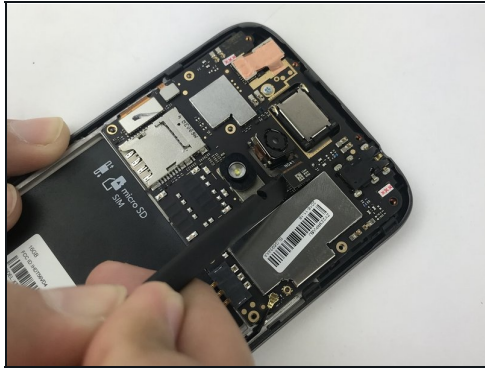
- Remove the sixteen (16) 3mm Phillips PH000 screws securing the midframe.
- ❗ Some phones have two shorter screws, one on each side of the battery (double marked with orange circles at left). If your device has these shorter screws, make sure they go back in their original holes.

## Step 7



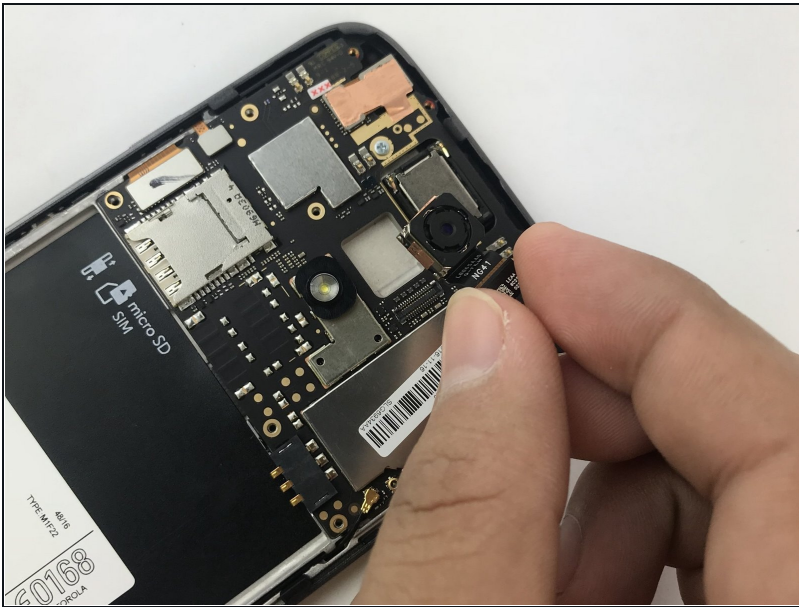
- Remove the back panel assembly with your hands.

## Step 8 — Rear Camera



- Use the flat end of a spudger to disconnect the rear-facing camera connector from its socket on the mother board.

## Step 9



- After detaching the connector, carefully remove the camera using tweezers. If you don't have tweezers, use your hands.

## Step 10 — Charging Port



- Use tweezers to pop up the antenna wire.

## Step 11



- Use the flat end of a spudger to pry up on the connector at the bottom of the battery space.



## Step 12



- Remove the two (2) 3mm Phillips PH000 screws securing the charging port.

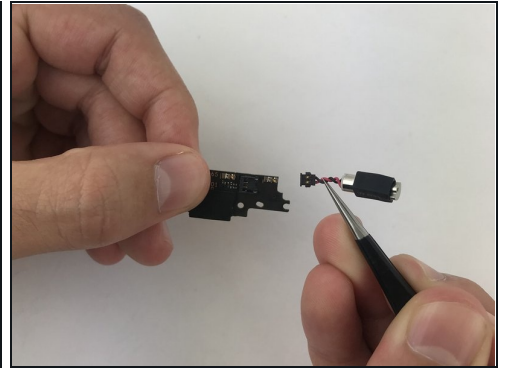
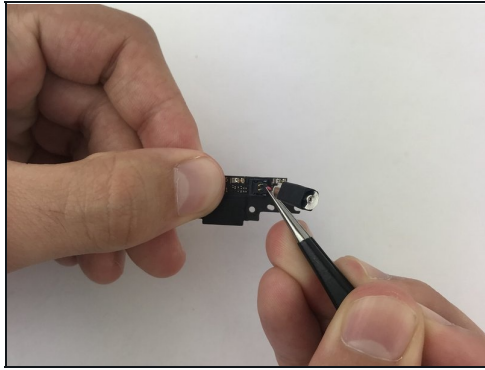
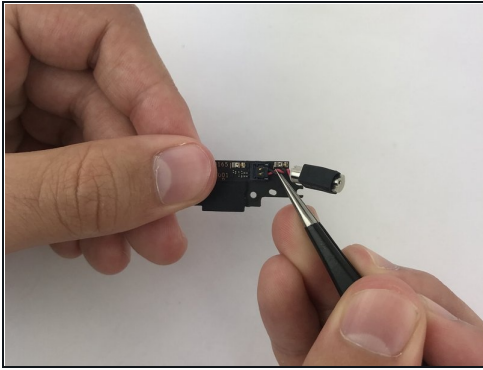
## Step 13



- Insert the tweezers under the vibrator and gently lift up the whole part.



## Step 14



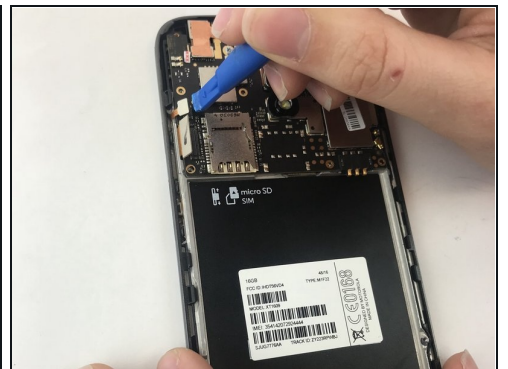
- Pop up on the vibrator's connector to separate it from the charging port.

## Step 15 — Screen



- Using an opening tool, pry up one of the connectors to the left of where the sim card was located.

## Step 16



- Pry up the next connector located right on top of the previous one.

## Step 17



- Using the Phillips screwdriver, remove the screw that's found next to the speaker on the top left of the phone.

## Step 18



- Using the plastic opening tool, carefully pry up the motherboard.

## Step 19



- Pull up the cable that connects the motherboard and the charging port.
- ① It's on the side that's closer to the motherboard, you might need to push the cable down first, and then pull it up.

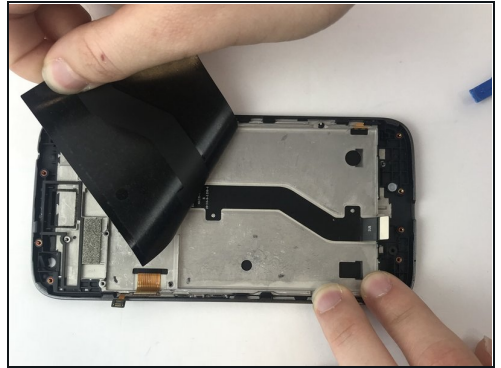
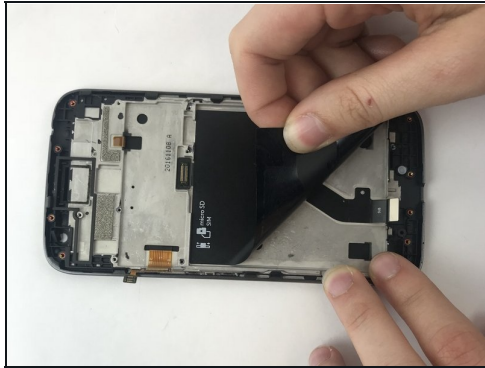
## Step 20



- Pry up the frontal speaker with a plastic opening tool.

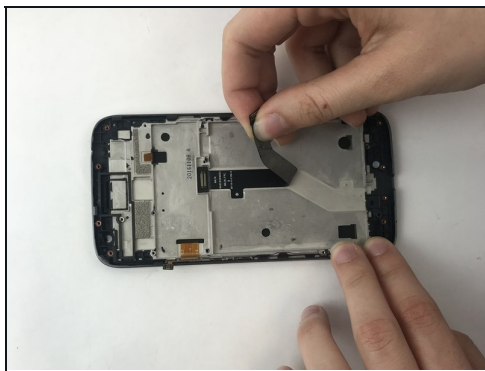
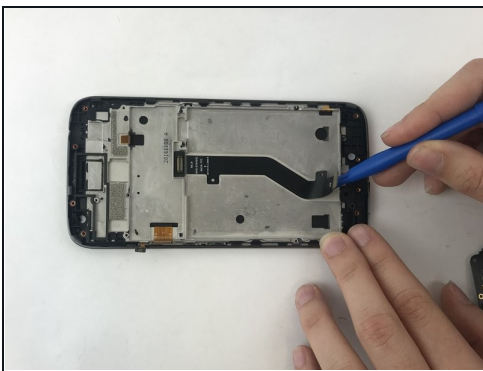


## Step 21



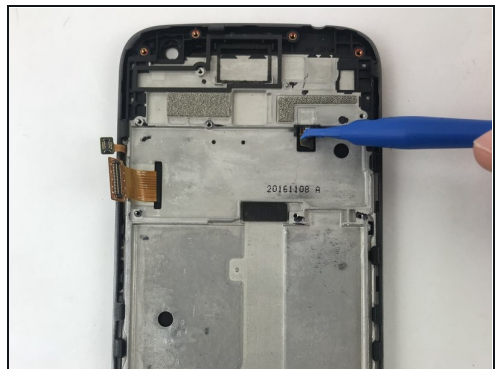
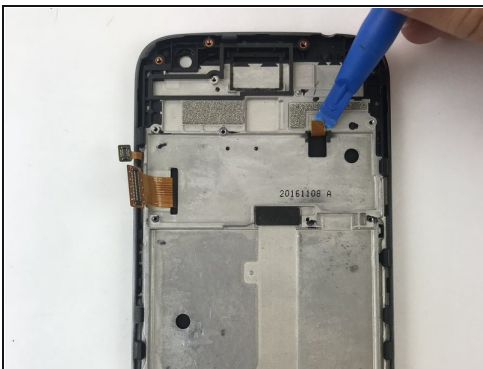
- Peel the black tape up with a plastic opening tool and or your fingers.

## Step 22



- Peel the flexible black cable using a plastic opening tool and or your fingers.

## Step 23



- Peel up the small tape that's connected to the screen with a plastic opening tool.

## Step 24



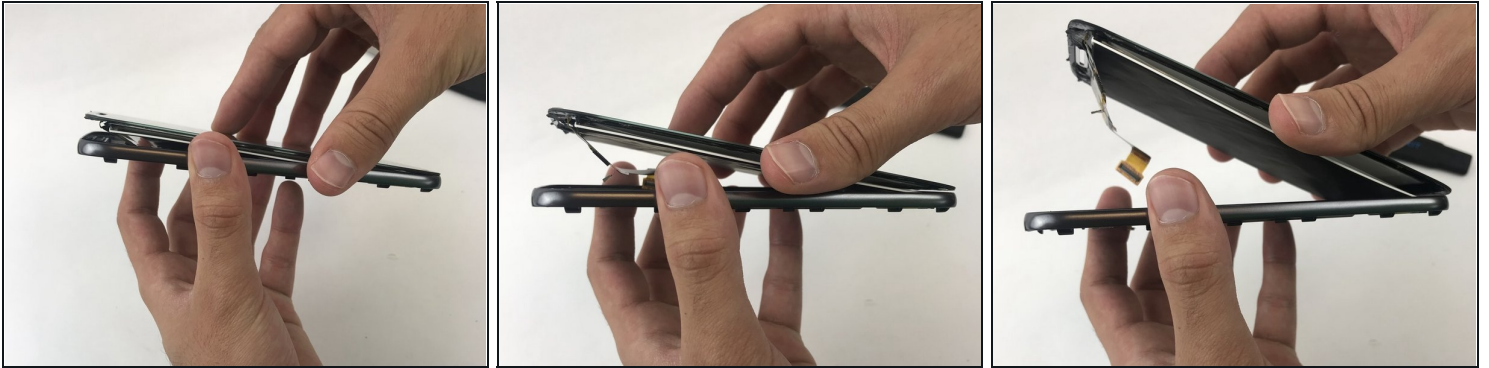
- Place an iOpener on the edges to soften the screen adhesive.

## Step 25



- Insert the Jimmy knife through the edge.
- Place a [plastic card](#) so that the adhesive doesn't stick back again.
- Go around the edges of the device with the Jimmy knife until all the adhesive has been removed.

## Step 26



- Pull up on the LCD screen with your hands and remove it.

---

To reassemble your device, follow these instructions in reverse order.