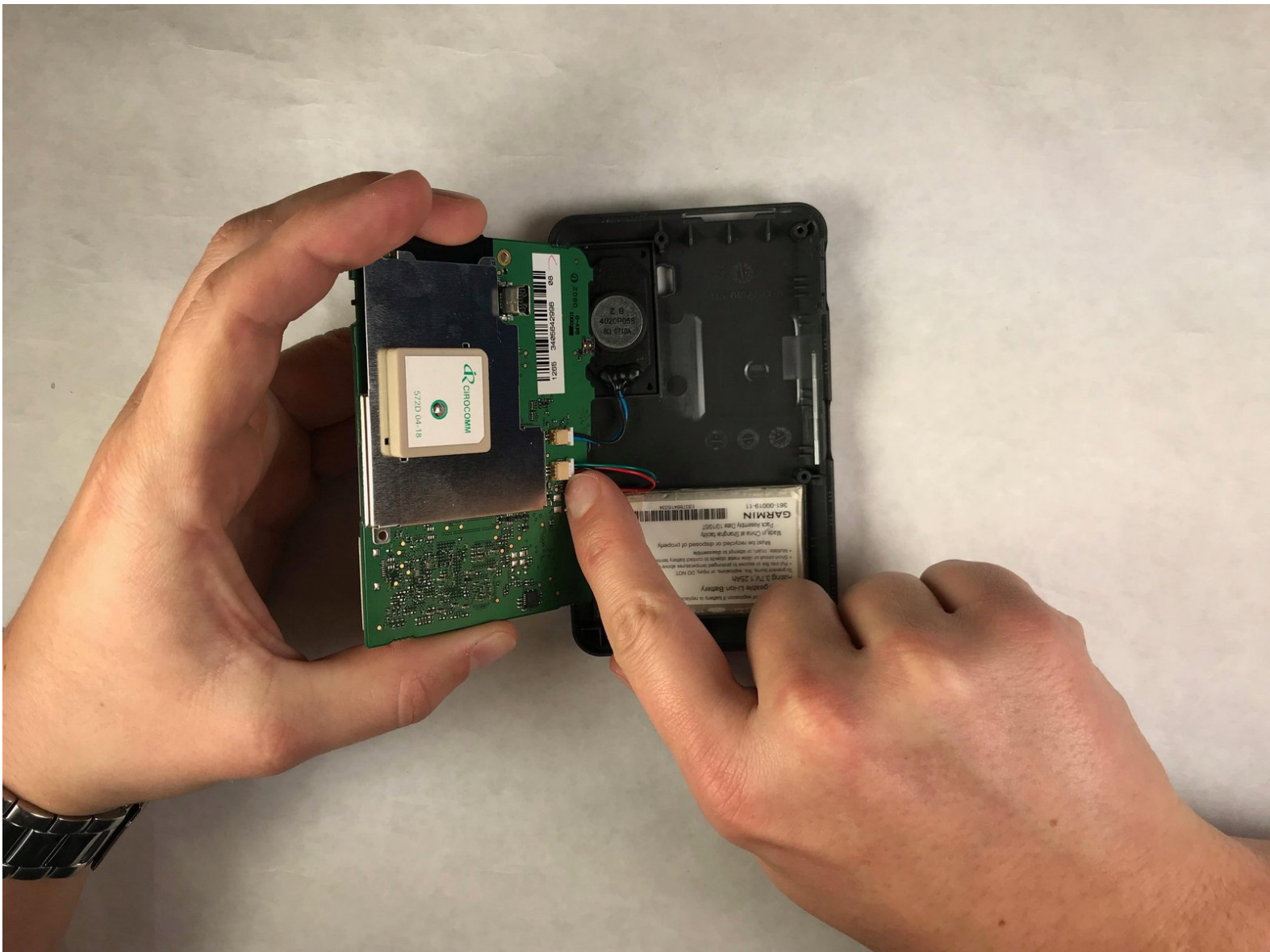




Garmin Nuvi 260W Circuit Board Replacement

How to replace a Garmin Nuvi 260W circuit board.

Written By: Hunter Johnson



INTRODUCTION

This device can be identified utilizing the criterion on the device page. When replacing the motherboard, be sure to set aside the following tools: T5 Torx screwdriver, PH #0 screwdriver, and plastic opening tool.

TOOLS:

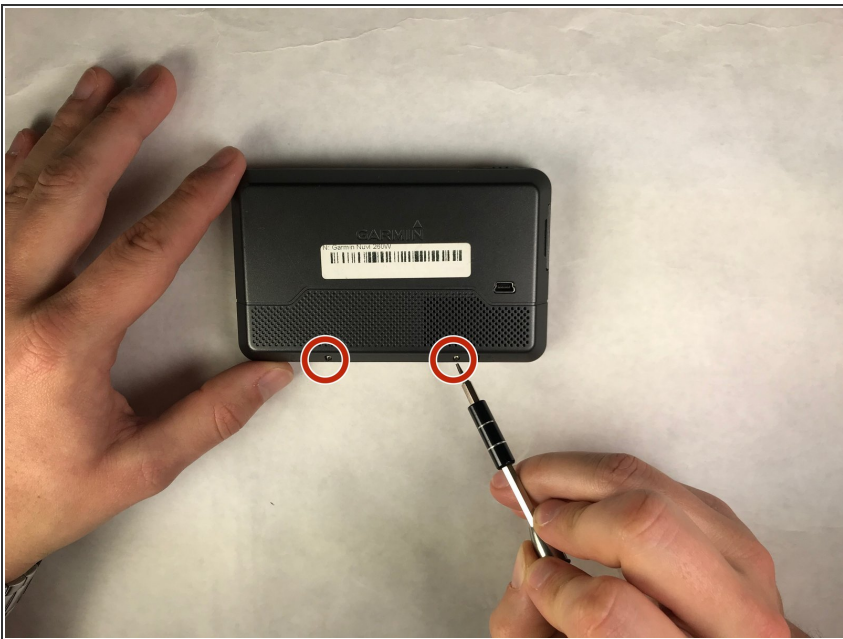
- [T5 Torx Screwdriver](#) (1)
 - [Phillips #0 Screwdriver](#) (1)
 - [iFixit Opening Tools](#) (1)
-

Step 1 — Circuit Board



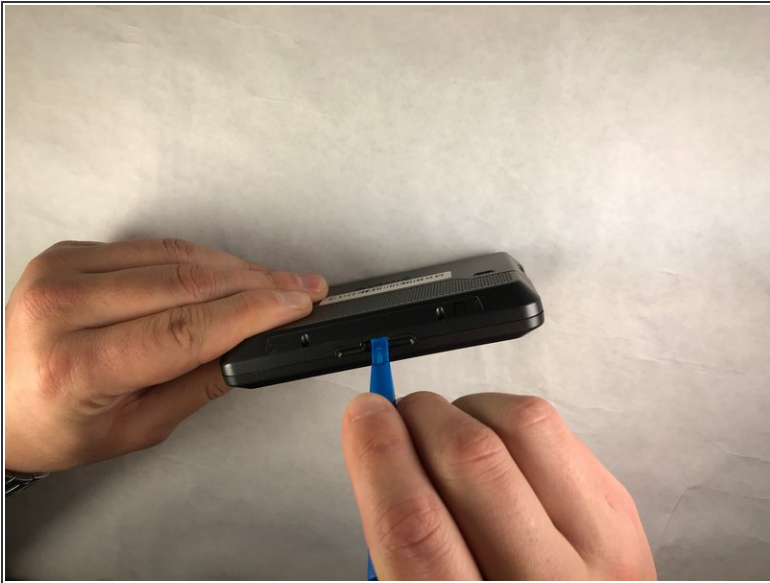
- Carefully remove model/serial number sticker.

Step 2



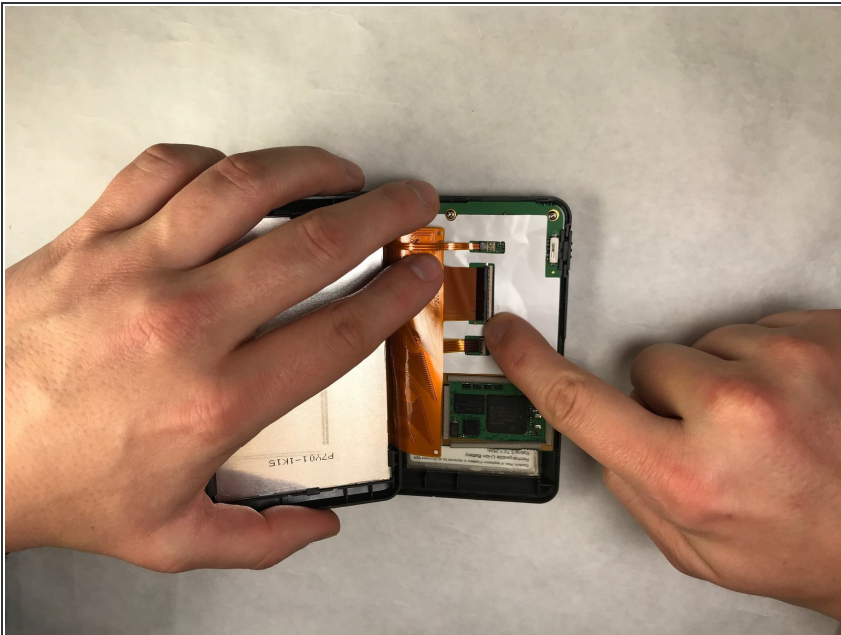
- Remove two 4mm T5 Torx screws located under the sticker.

Step 3



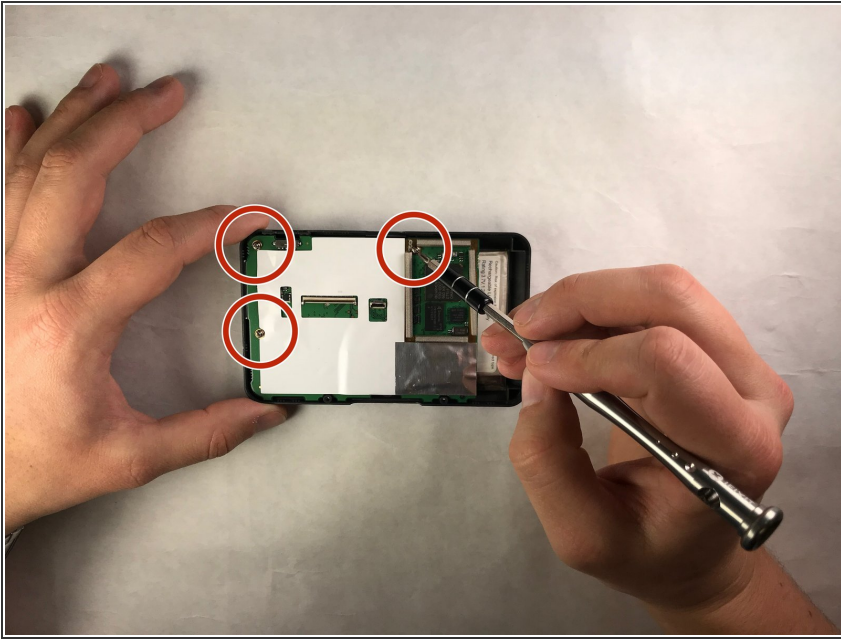
- Once screws are removed, use the plastic opening tool to carefully separate the body from the screen encasing.

Step 4



- Once the body of the nüvi is separated, carefully flip the tabs on the motherboard that secure the ribbon cable to the motherboard and disconnect.

Step 5



- Once the body of the nüvi is separated and the ribbon cable is disconnected, remove the three 1.6mm Phillips #0 screws.

Step 6



- Carefully disconnect the two cables connecting the battery to the motherboard and remove motherboard.

To reassemble your device, follow these instructions in reverse order.