



Lenovo Essential G570 Keyboard Replacement

This guide demonstrates how to replace the keyboard on the Lenovo Essential G570.

Written By: Nina Francisco



INTRODUCTION

Over time, the constant use of the keyboard keys may cause them to break down and become unresponsive. This guide demonstrates how to replace the keyboard on the Lenovo Essential G570 laptop.

TOOLS:

- [Phillips #0 Screwdriver](#) (1)
 - [iFixit Opening Tools](#) (1)
-

Step 1 — Battery



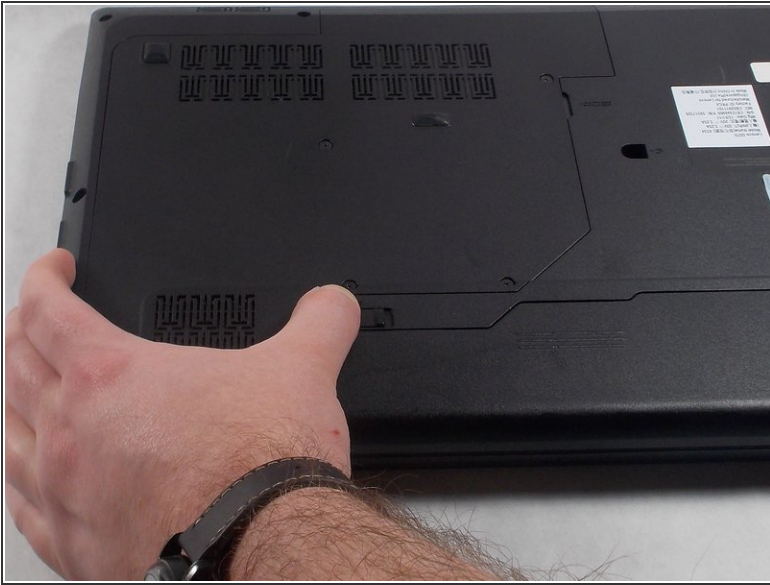
- Turn off the laptop.
- Disconnect the charging cable.
- ⚠ Failure to unplug the cable could result in electric shock.
- Turn the computer upside down.

Step 2



- Locate the two switches that lock the battery.
- Push the right switch outwards to unlock the battery.

Step 3



- Push and hold the left switch outwards to unlock the battery.
- Pull the battery away from the computer.

Step 4 — Back Panel



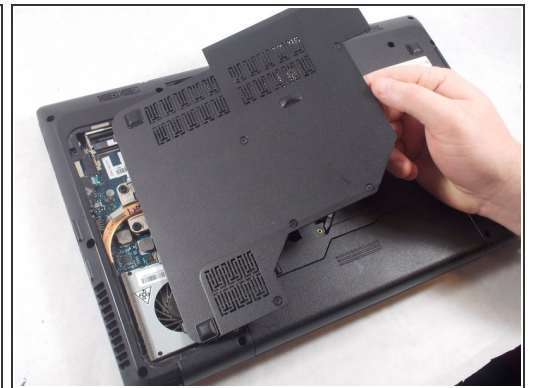
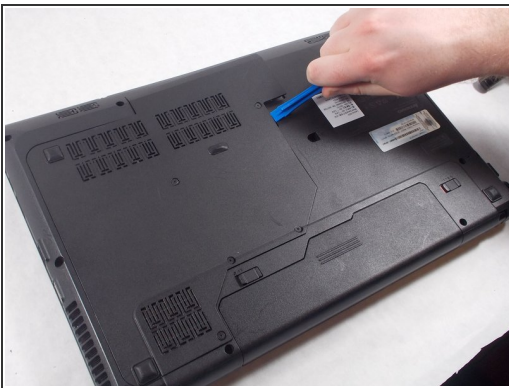
- Turn the laptop over so that the bottom side is facing up.

Step 5



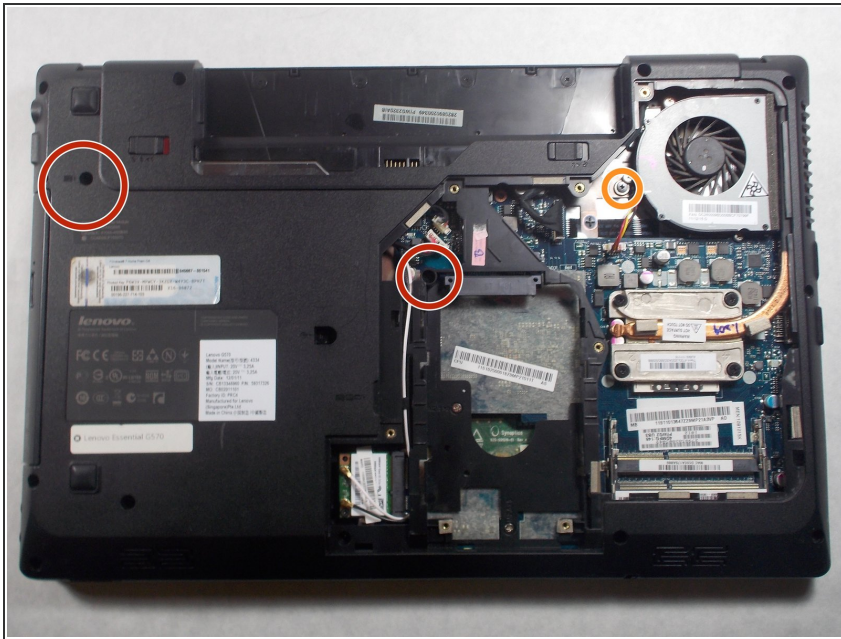
- Unscrew the five 5mm Phillips #0 screws that hold the cover in place.
- ⓘ The screws do not come out fully from the back plate. They stay attached to the plate itself.

Step 6



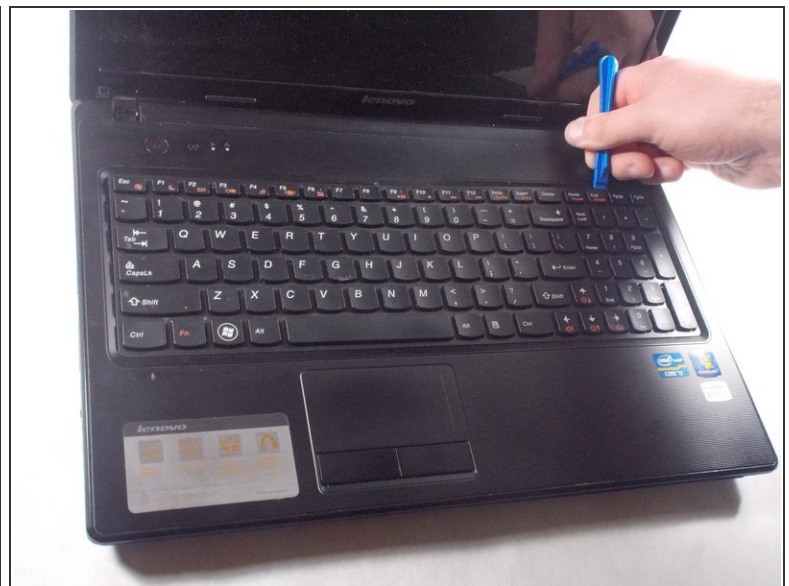
- With the screws removed, insert the plastic opening tool into the groove located on the right side.
- Begin to pry up, and the plate should lift up from the body of the laptop.
- While lifting up, take the piece in one hand and pull up and to the right to fully remove the back plate.

Step 7 — Keyboard



- Remove the two 9mm Phillips #0 screws.
- Remove the single 5mm Phillips #0 screw.
- ❗ All 3 screws are located next to keyboard icons.

Step 8




- Flip the computer over and open it.
- Using the plastic opening tool, pry open the top of the keyboard.

Step 9




- Remove the keyboard by gently pulling the top of the keyboard loose, and then lifting the keyboard out.

 Be careful lifting the keyboard up because there is a delicate ribbon cable connected to the bottom.

Step 10



- While lifting the keyboard, push the black latch on the keyboard cable ZIF connector forward to unlock it.
- Carefully pull away the ribbon cable to detach it from the motherboard.

 Be careful when unlatching the lock on the keyboard cable ZIF connector. It is extremely delicate and can easily break.

To reassemble your device, follow these instructions in reverse order.

This document was generated on 2020-11-23 09:12:21 PM (MST).

