



Lenovo Essential G570 RAM Replacement

How to replace the RAM in a Lenovo Essential G570.

Written By: Justin Bickford



INTRODUCTION

The RAM of the computer is responsible for running all of the programs while the computer is powered on. If a user experiences the computer freezing during operation, it may be due to the RAM being too small or too slow. To fix this, upgrading the RAM is often a quick and easy solution to speeding up the performance of your laptop. This guide goes through the necessary steps in order to replace the RAM currently in the computer.



TOOLS:

- [Phillips #0 Screwdriver](#) (1)
 - [iFixit Opening Tools](#) (1)
-

Step 1 — Battery



- Turn off the laptop.
- Disconnect the charging cable.
- ⚠ Failure to unplug the cable could result in electric shock.
- Turn the computer upside down.

Step 2



- Locate the two switches that lock the battery.
- Push the right switch outwards to unlock the battery.

Step 3



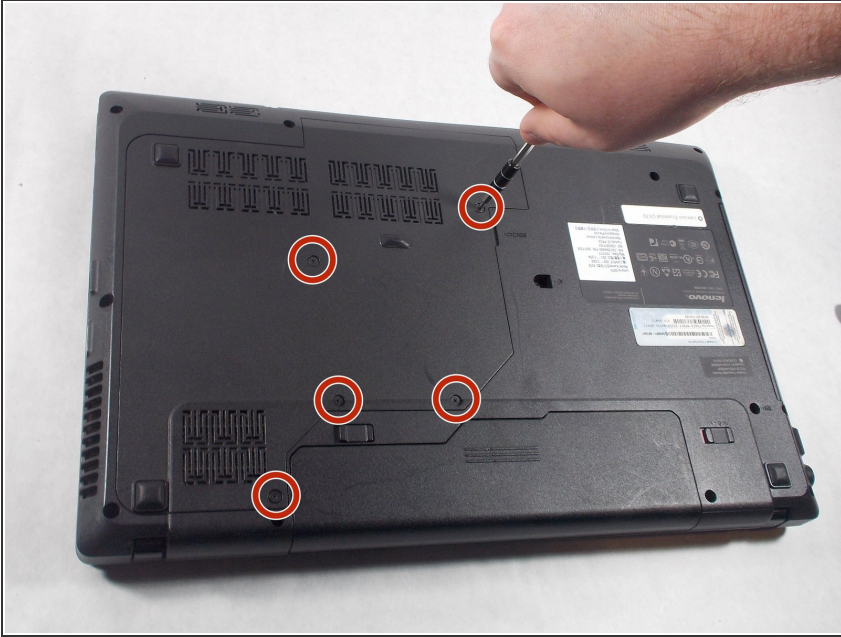
- Push and hold the left switch outwards to unlock the battery.
- Pull the battery away from the computer.

Step 4 — Back Panel



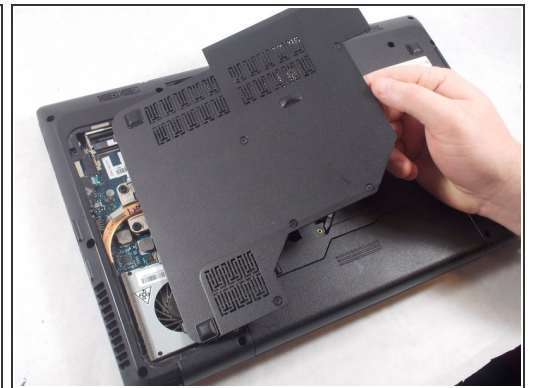
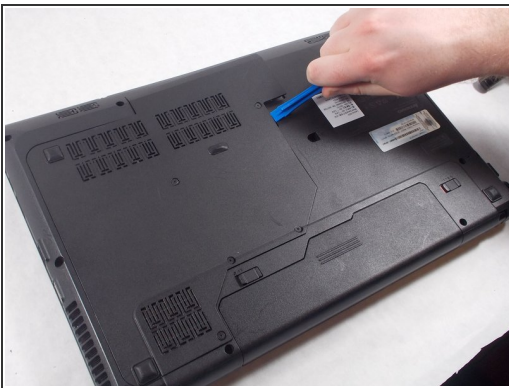
- Turn the laptop over so that the bottom side is facing up.

Step 5



- Unscrew the five 5mm Phillips #0 screws that hold the cover in place.
- ⓘ The screws do not come out fully from the back plate. They stay attached to the plate itself.

Step 6



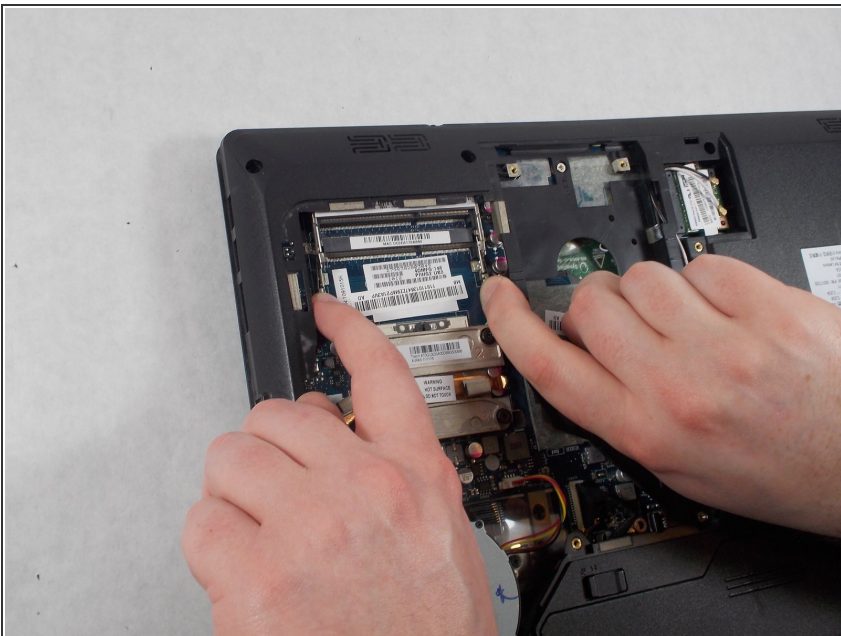
- With the screws removed, insert the plastic opening tool into the groove located on the right side.
- Begin to pry up, and the plate should lift up from the body of the laptop.
- While lifting up, take the piece in one hand and pull up and to the right to fully remove the back plate.

Step 7 — RAM



- Using your fingers, hold open the two clips holding the top RAM in place.
- ⓘ The two RAM chips are placed one on top of another. It is important to take the top one out first to easily access the bottom one.
- With the clips held away from the RAM, slide the top stick out from its connection.

Step 8



- With the top RAM stick removed, repeat the same process for the bottom piece. Begin by holding the two clips away from the RAM.
- With the clips held out, slide the RAM out from the connection.

To reassemble your device, follow these instructions in reverse order.