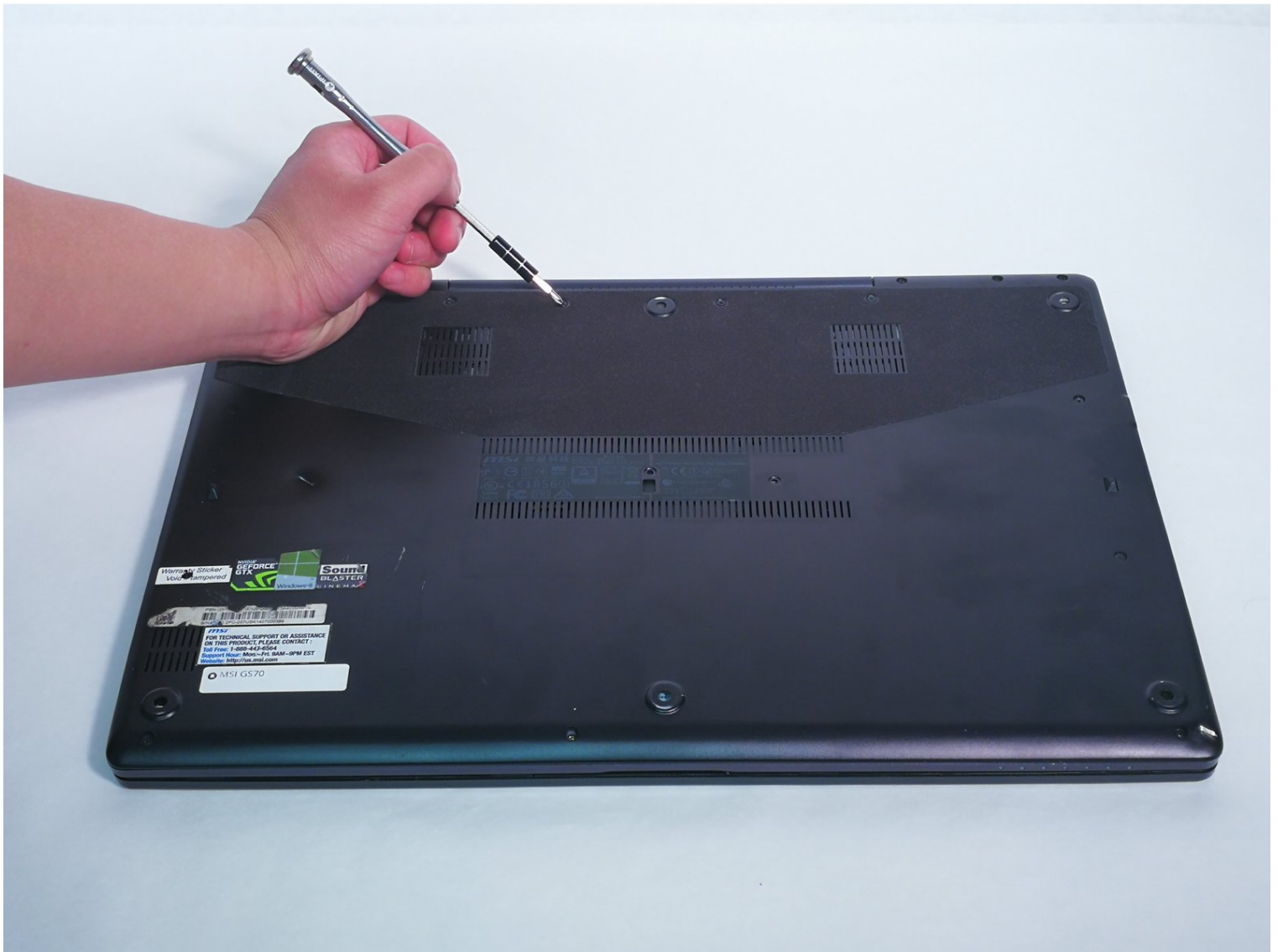




MSI GS70 Battery Replacement

Use this guide when you want to replace and/or...

Written By: Billy Faulconer



INTRODUCTION

Use this guide when you want to replace and/or recycle your battery.



TOOLS:

Magnetic Project Mat (1)

Spudger (1)

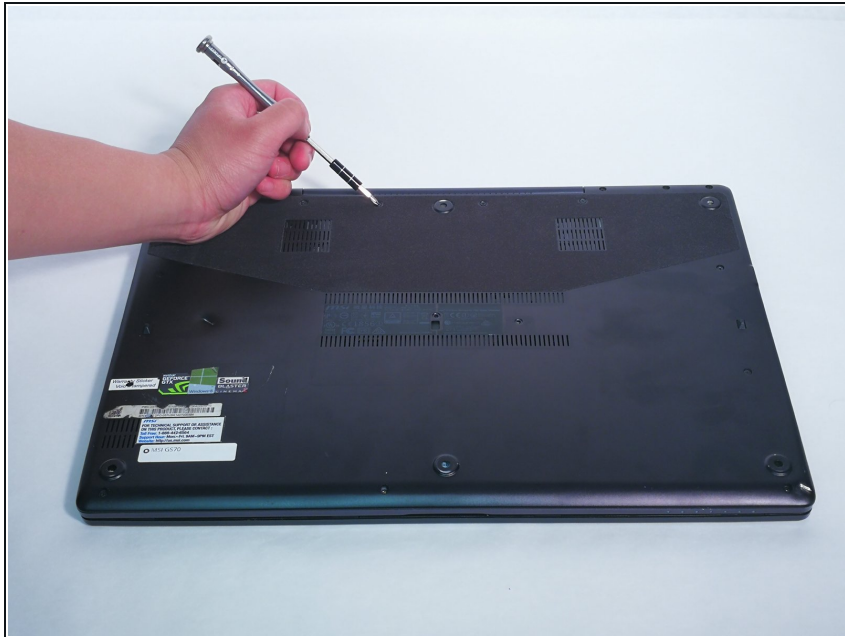
JIS Driver Set (1)



PARTS:

MSI BTY-L76 Battery (1)

Step 1 — Battery



⚠ Make sure that the laptop is turned off before starting.

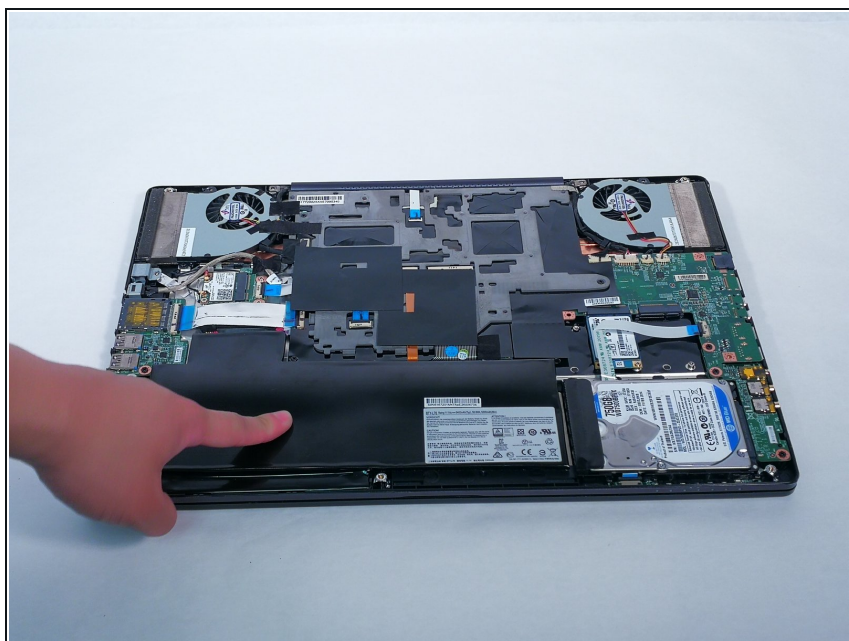
- Place laptop with the bottom plate facing up.

Step 2



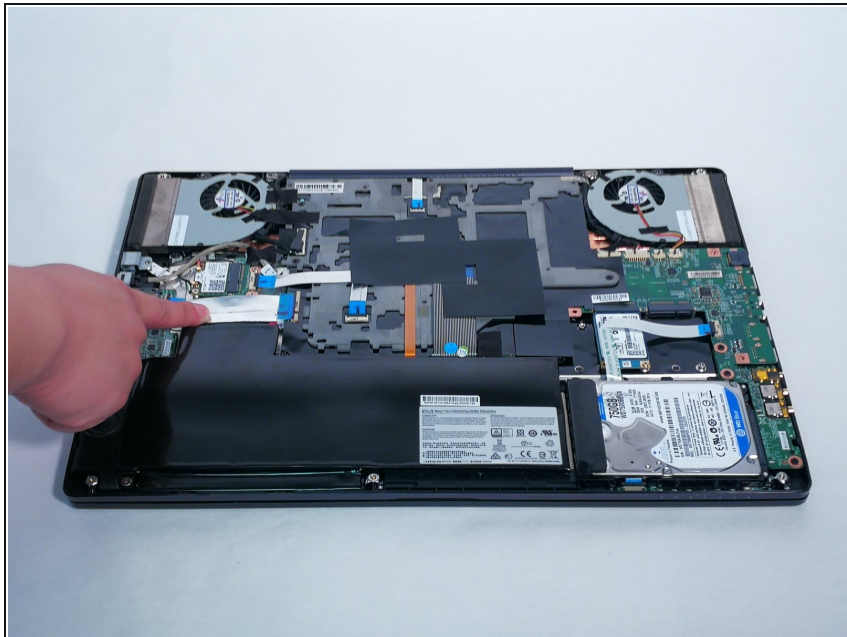
- Remove all screws using the JIS #1 screwdriver.

Step 3



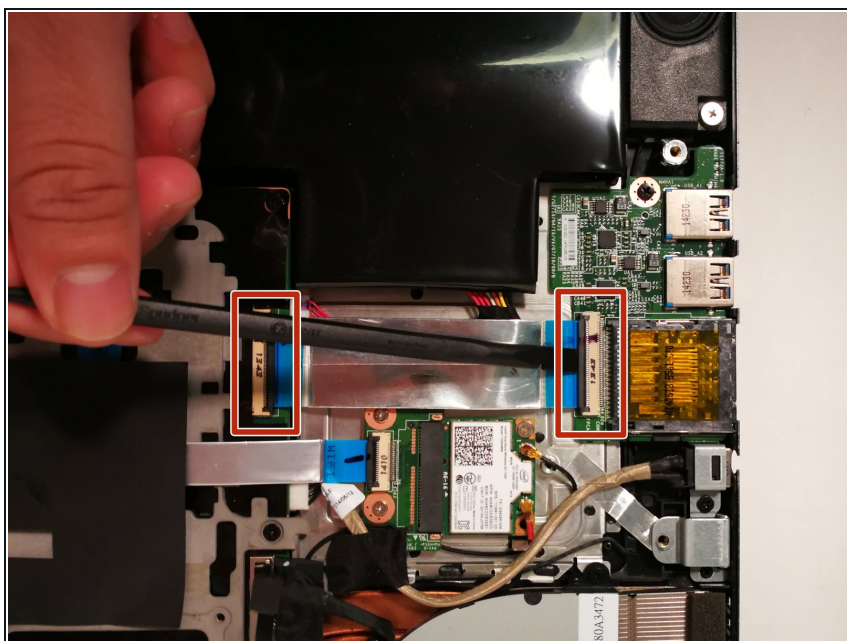
- Remove the back plate.
- Locate the battery.

Step 4



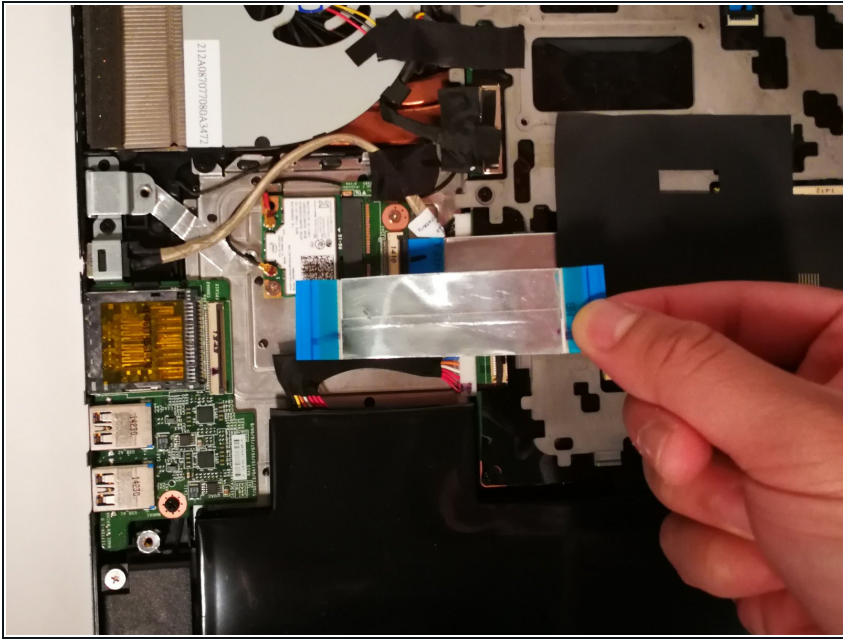
- Locate the foil connector above the battery.

Step 5



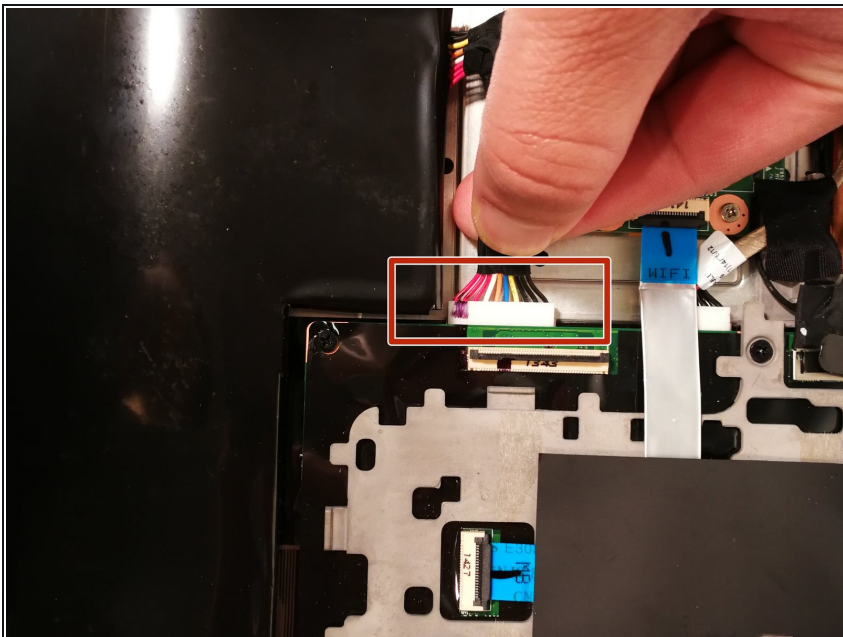
- Flip up both black clips with your spudger.

Step 6



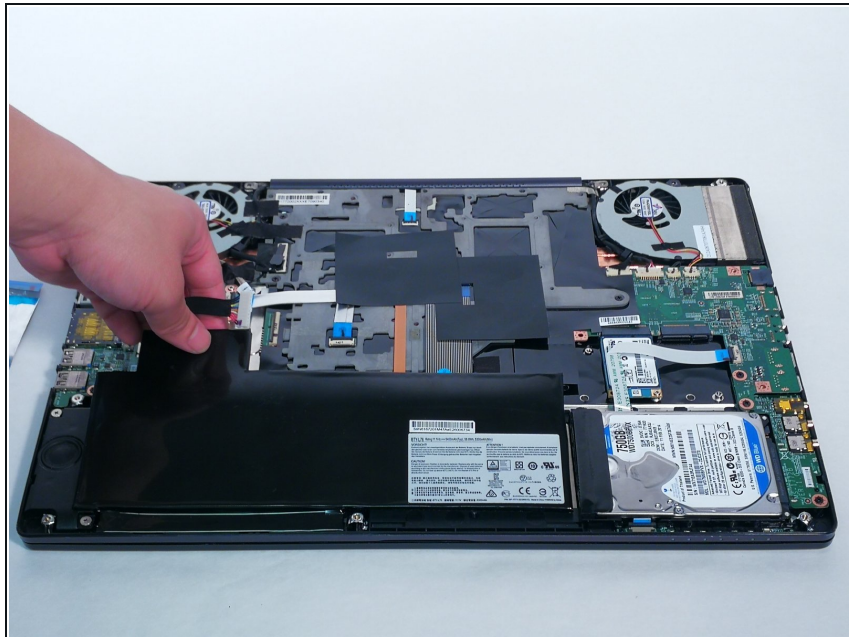
- Remove the foil connector by pulling on the blue tabs.

Step 7



- ① After the foil connector is removed you will see an 8 pin connector.
- Disconnect the 8 Pin connector.

Step 8



- Lift the battery and remove.

To reassemble your device, follow these instructions in reverse order.