



Garmin Nuvi 260W Screen Replacement

How to replace a Garmin Nuvi 260W screen.

Written By: Hunter Johnson



INTRODUCTION

This device can be identified utilizing the criterion on the device page. When replacing the screen, be sure to set aside the following tools: T5 Torx screwdriver and plastic opening tool.



TOOLS:

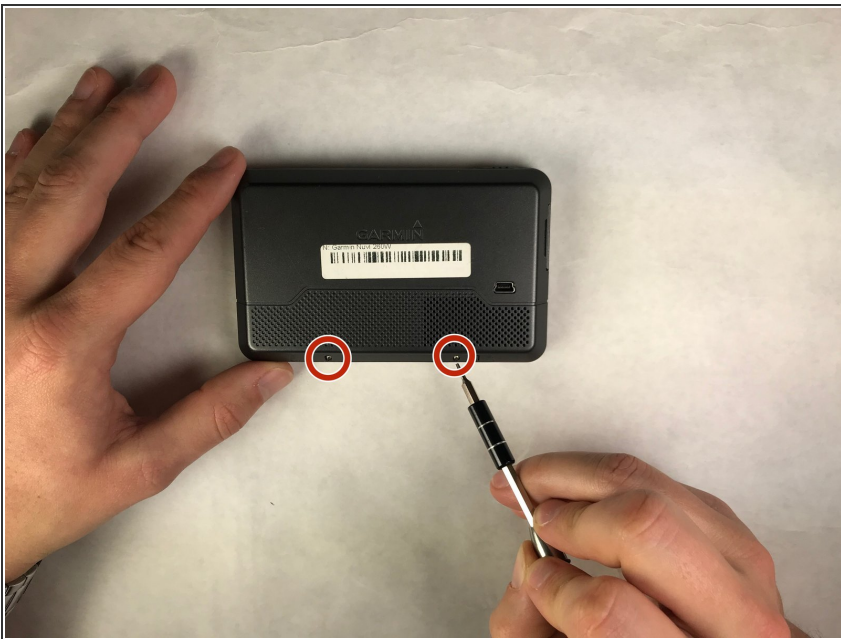
- [T5 Torx Screwdriver](#) (1)
 - [iFixit Opening Tools](#) (1)
-

Step 1 — Screen



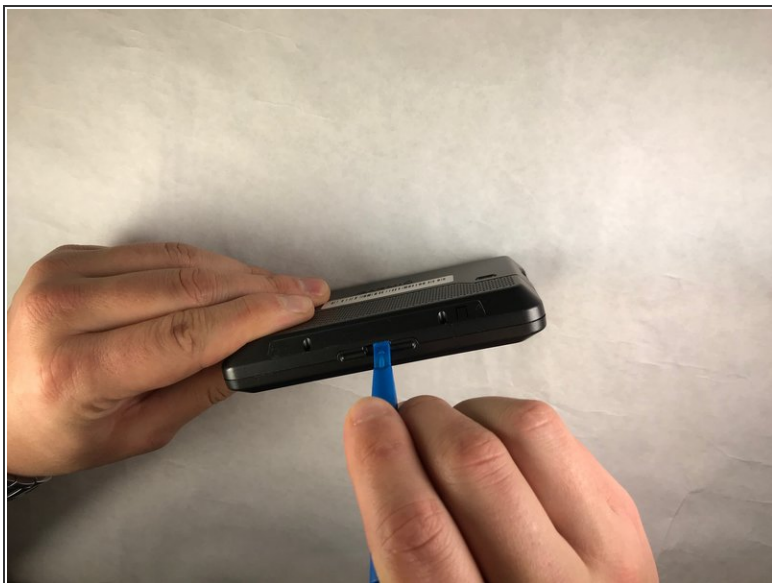
- Carefully remove model/serial number sticker.

Step 2



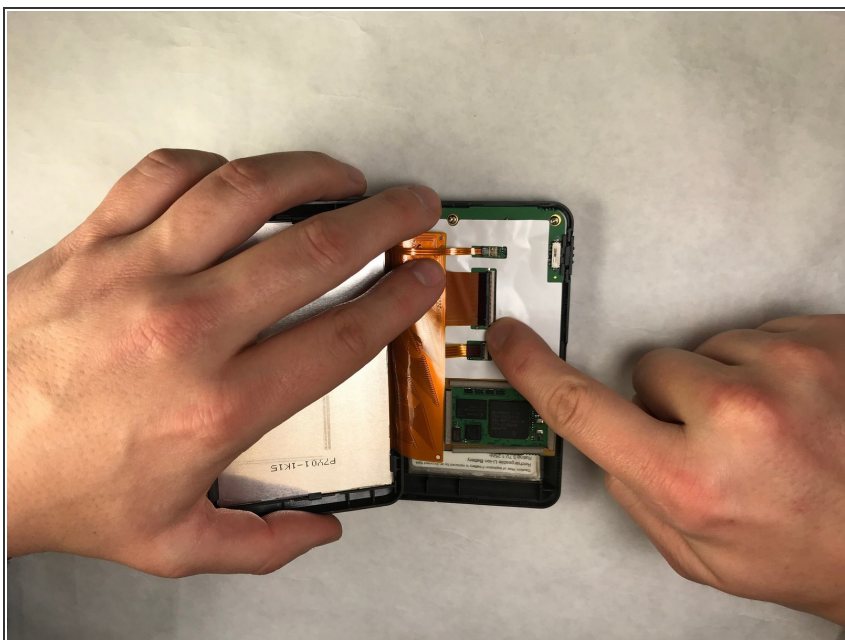
- Remove two 4mm T5 Torx screws located under the sticker.

Step 3



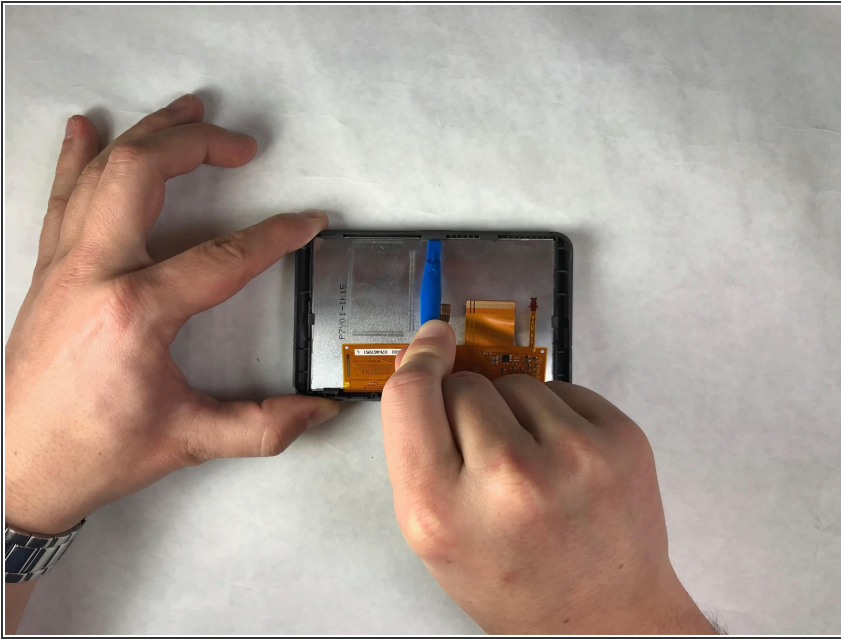
- Once the screws are removed, use the plastic opening tool to carefully separate the body from the screen encasing.

Step 4



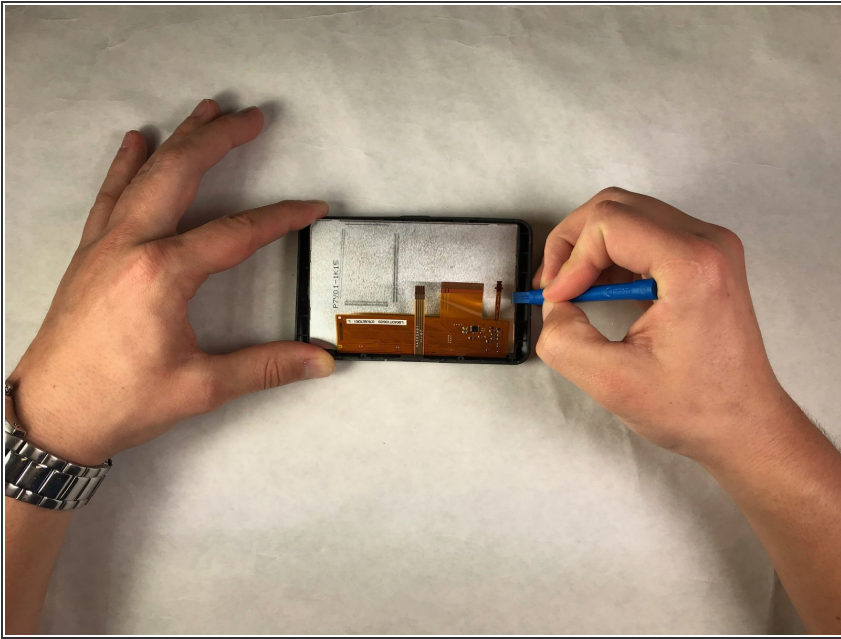
- Once the body of the nüvi is separated, carefully flip the tabs on the motherboard that secure the ribbon cable to the motherboard and disconnect.

Step 5



- Use a plastic opening tool to loosen the three clips located on the top of the screen encasing to a position that loosens the hold on the screen.

Step 6



- Use a plastic opening tool to loosen the two clips on the short sides of the Nuvi screen encasing to a position that allows the removal of the screen.

To reassemble your device, follow these instructions in reverse order.