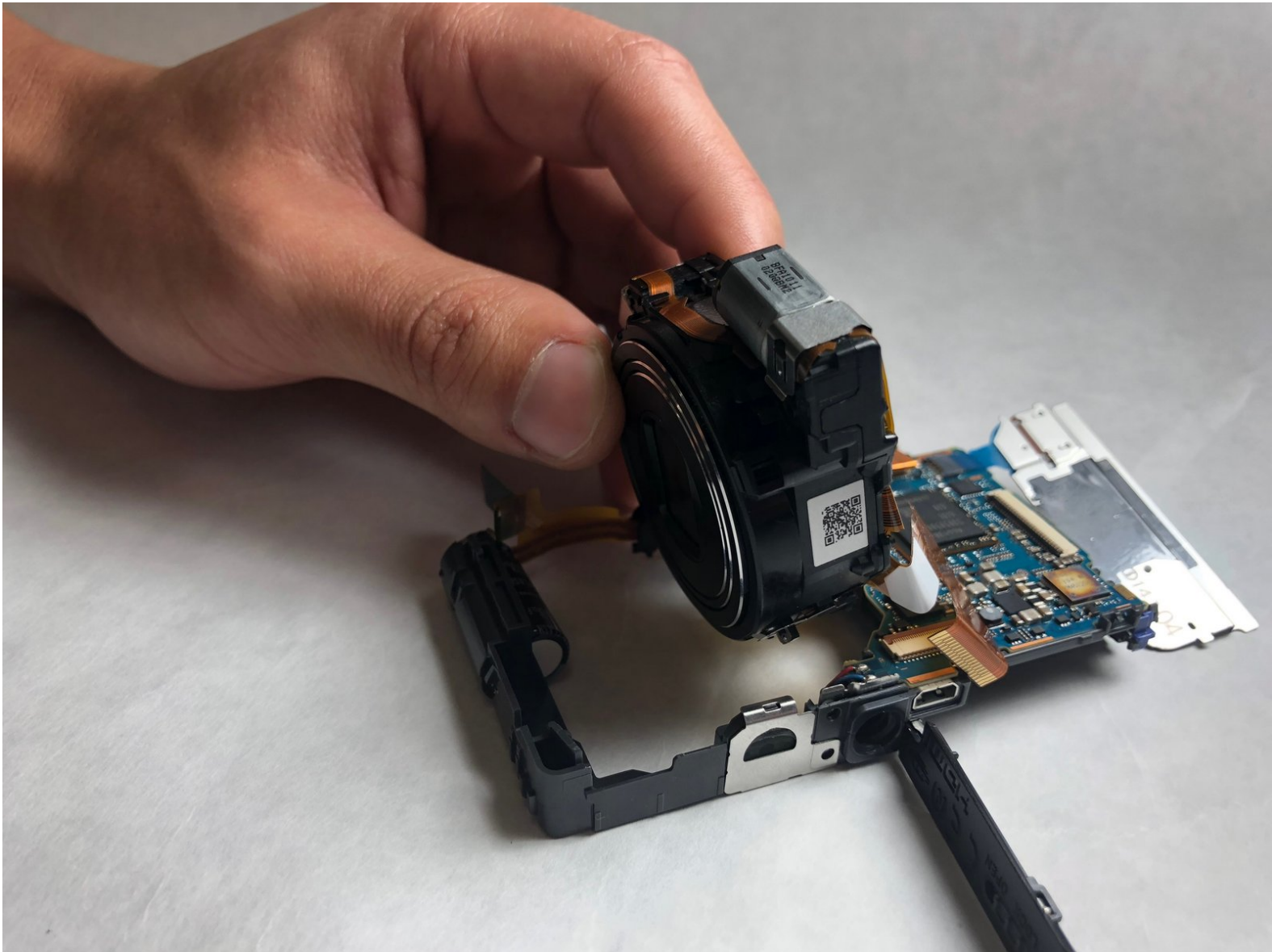




Sony Cyber-shot DSC-WX220 Lens Assembly Replacement

This replacement guide shows how to replace the lens assembly.

Written By: Kate Glazer



INTRODUCTION

This guide shows how to replace the lens assembly that may not be working properly.



TOOLS:

- [iFixit Opening Tools](#) (1)
 - [Phillips #00 Screwdriver](#) (1)
 - [Phillips #000 Screwdriver](#) (1)
-

Step 1 — Battery



- Slide the gray switch from lock to open position.

Step 2



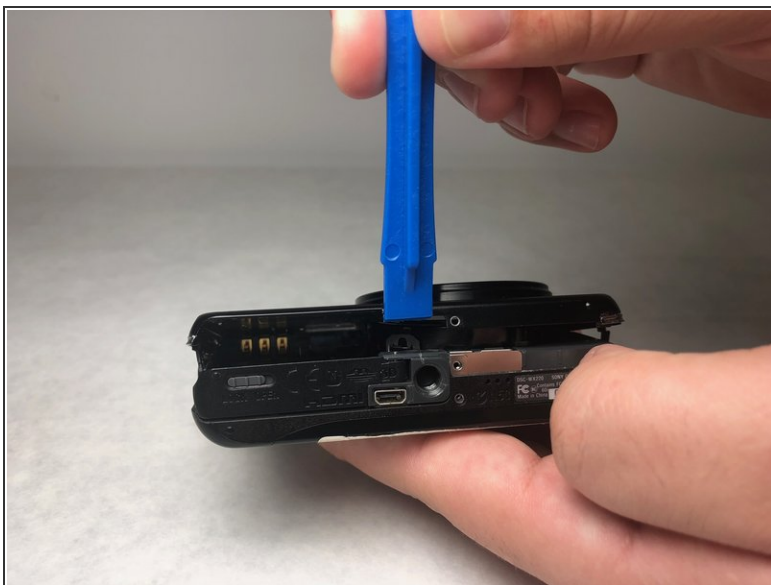
- Pull down on the blue tab to release the battery.

Step 3 — Outer Case



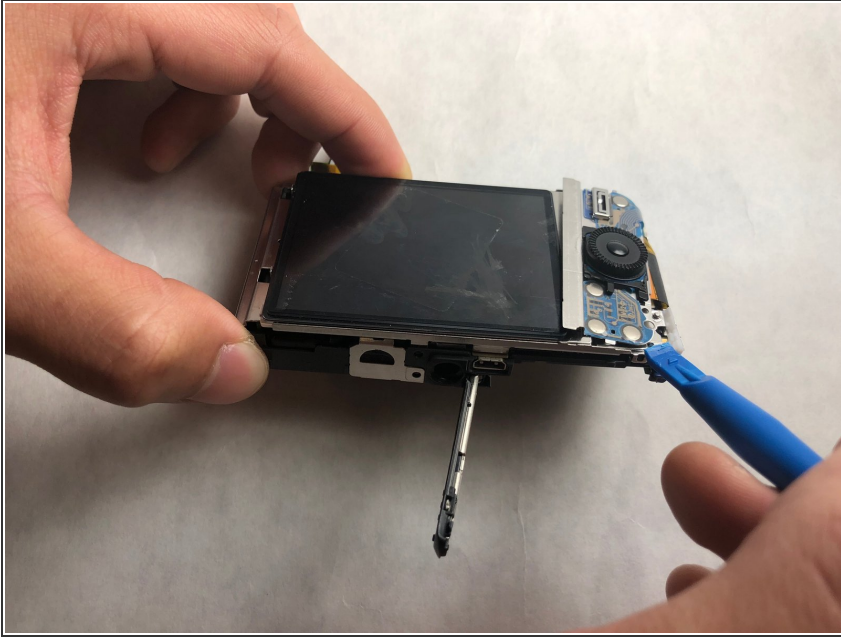
- Use a PH00 screwdriver to remove the five 3.5 mm screws.
- Use a PH00 screwdriver to remove the two 2.5 mm screws.

Step 4



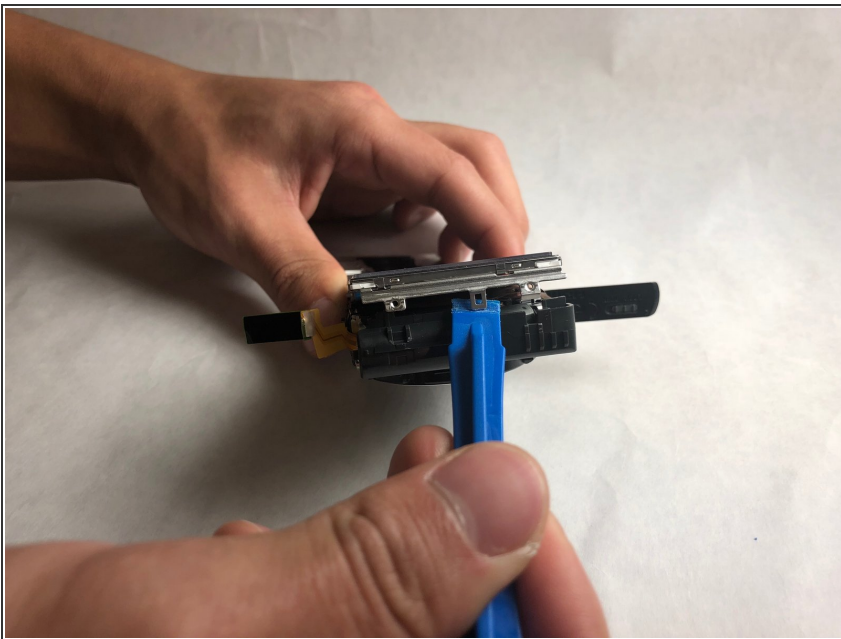
- Pry apart the case gently using a plastic opening tool.

Step 5 — Lens Assembly



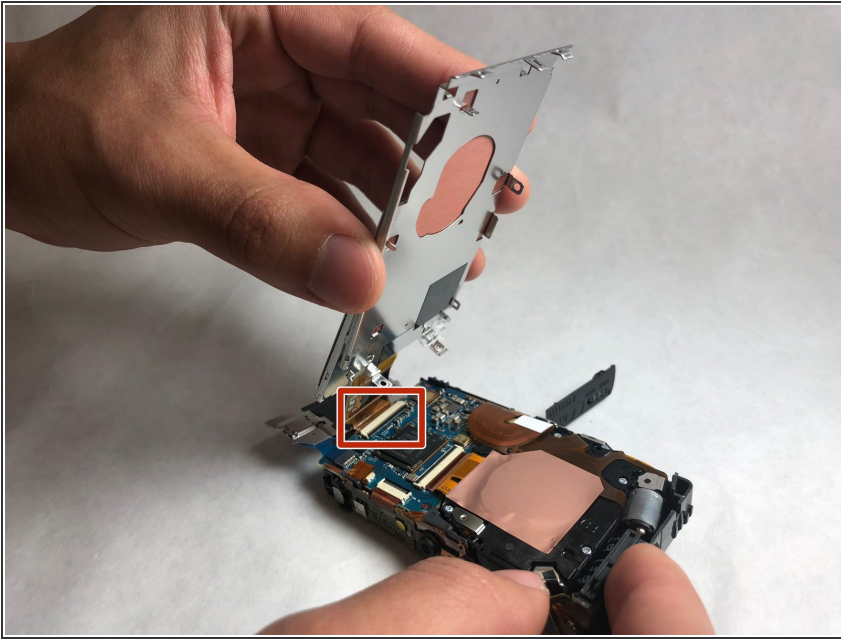
- Pry back the panel to the right of the screen using a plastic opening tool.

Step 6



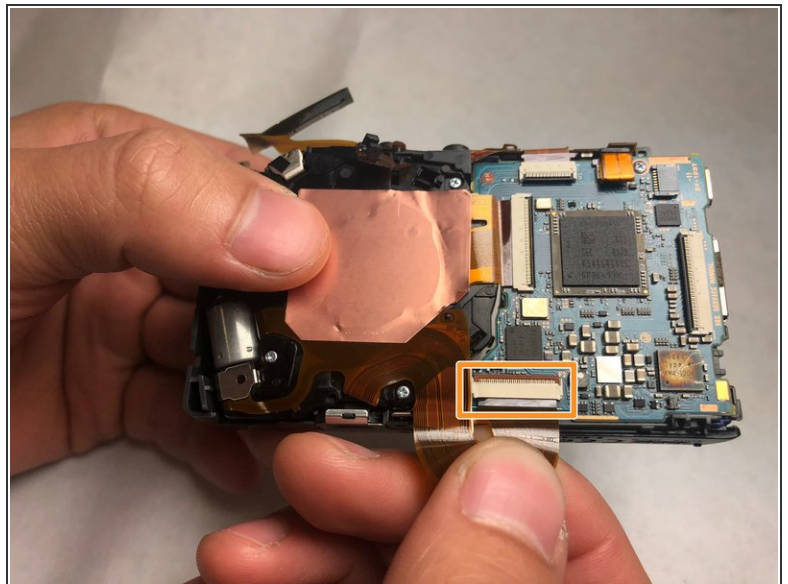
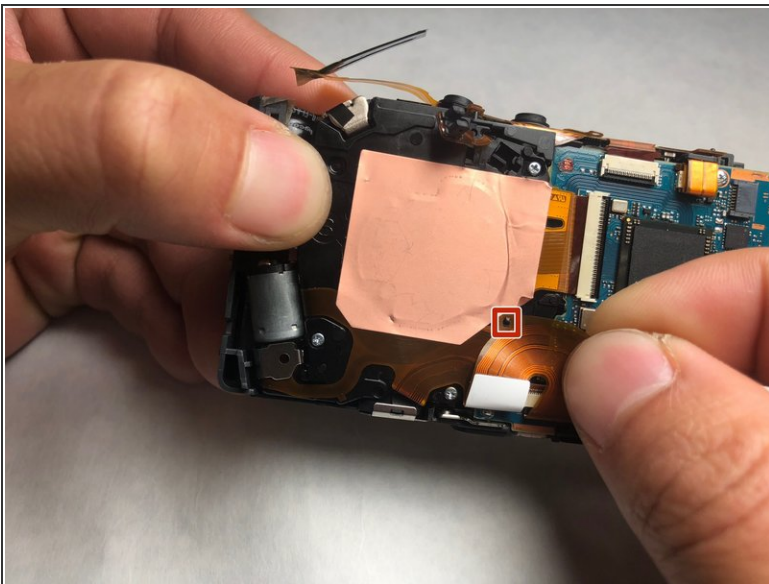
- Working on the left side of the screen, pry the metal panel off from the motherboard housing using a plastic opening tool.

Step 7



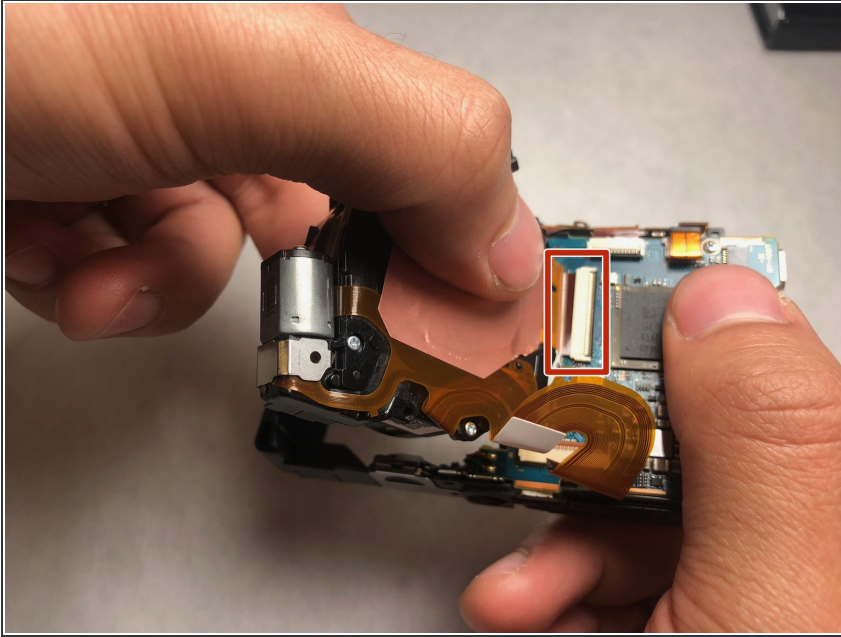
- Pull out the ZIF cable from the motherboard.
- ⓘ When removing the ZIF cable, pull it straight out to avoid damaging the cable.

Step 8



- Unpin the ZIF cable by lifting the cable towards the top of the camera while pulling up towards yourself.
- Pull the ZIF cable out.

Step 9



- Lift the lens out of the case.
- Pull out the ZIF cable.

To reassemble your device, follow these instructions in reverse order.